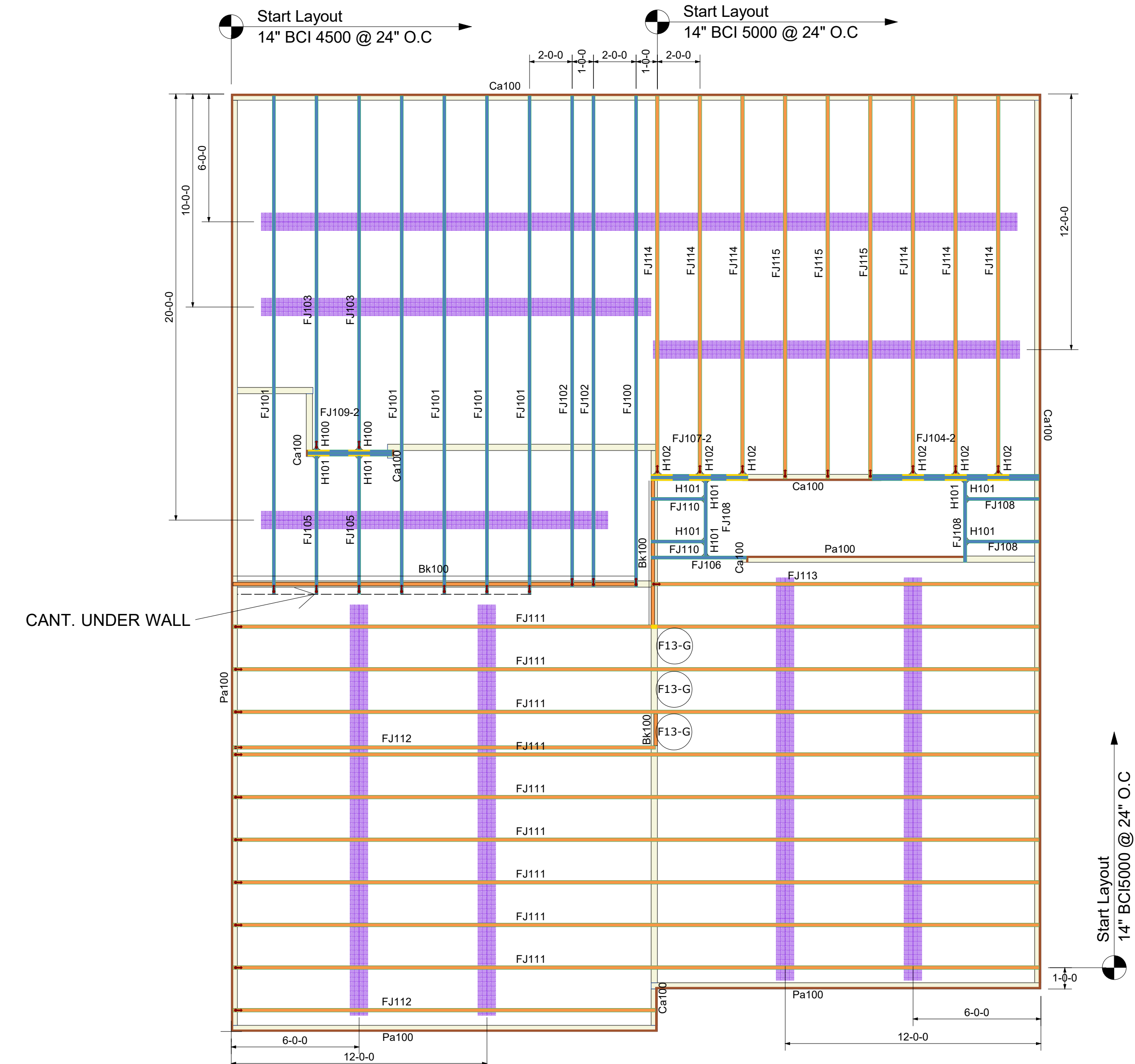


Joist	Depth	Flange	Web	Top Flange	Bottom Flange	Web	Top Flange	Bottom Flange
BCI 1000	10"	2 1/2"	1 1/2"	1 1/2"	1 1/2"	1 1/2"	1 1/2"	1 1/2"
BCI 1200	12"	3"	1 1/2"	1 1/2"	1 1/2"	1 1/2"	1 1/2"	1 1/2"
BCI 1400	14"	3 1/2"	1 1/2"	1 1/2"	1 1/2"	1 1/2"	1 1/2"	1 1/2"
BCI 1600	16"	4"	1 1/2"	1 1/2"	1 1/2"	1 1/2"	1 1/2"	1 1/2"
BCI 1800	18"	4 1/2"	1 1/2"	1 1/2"	1 1/2"	1 1/2"	1 1/2"	1 1/2"
BCI 2000	20"	5"	1 1/2"	1 1/2"	1 1/2"	1 1/2"	1 1/2"	1 1/2"
BCI 2200	22"	5 1/2"	1 1/2"	1 1/2"	1 1/2"	1 1/2"	1 1/2"	1 1/2"
BCI 2400	24"	6"	1 1/2"	1 1/2"	1 1/2"	1 1/2"	1 1/2"	1 1/2"
BCI 2600	26"	6 1/2"	1 1/2"	1 1/2"	1 1/2"	1 1/2"	1 1/2"	1 1/2"
BCI 2800	28"	7"	1 1/2"	1 1/2"	1 1/2"	1 1/2"	1 1/2"	1 1/2"
BCI 3000	30"	7 1/2"	1 1/2"	1 1/2"	1 1/2"	1 1/2"	1 1/2"	1 1/2"



Products					
PlotID	Length	Product	Piles	Net Qty	Fab Type
Bk100	2' 0"	14" BCI® 5000s-1.8	1	16	FF
Ca100	12' 0"	1" x 14" BC RIM BOARD OSB	1	8	MFD
FJ100	24' 0"	14" BCI® 4500s-1.8	1	1	MFD
FJ101	24' 0"	14" BCI® 4500s-1.8	1	5	MFD
FJ102	24' 0"	14" BCI® 4500s-1.8	1	2	MFD
FJ103	17' 0"	14" BCI® 4500s-1.8	1	2	MFD
FJ104-2	8' 0"	14" BCI® 4500s-1.8	2	2	FF
FJ105	7' 0"	14" BCI® 4500s-1.8	1	2	MFD
FJ106	5' 0"	14" BCI® 4500s-1.8	1	1	MFD
FJ107-2	5' 0"	14" BCI® 4500s-1.8	2	2	FF
FJ108	4' 0"	14" BCI® 4500s-1.8	1	4	MFD
FJ109-2	4' 0"	14" BCI® 4500s-1.8	2	2	FF
FJ110	3' 0"	14" BCI® 4500s-1.8	1	2	MFD
FJ111	38' 0"	14" BCI® 5000s-1.8	1	9	MFD
FJ112	20' 0"	14" BCI® 5000s-1.8	1	2	MFD
FJ113	19' 0"	14" BCI® 5000s-1.8	1	1	MFD
FJ114	18' 0"	14" BCI® 5000s-1.8	1	6	MFD
FJ115	18' 0"	14" BCI® 5000s-1.8	1	3	MFD
Pa100	12' 0"	1" x 14" BC RIM BOARD OSB	1	8	MFD

Accessories					
PlotID	Length	Product	Piles	Net Qty	Fab Type
	1' 0"	Backer Blocks (14" BCI® 4500s-1.8)	1	16	Other
		Web Stiffeners (14" BCI® 5000s-1.8)	1	2	Other
	6' 0"	Filler Blocks (14" BCI® 4500s-1.8)	1	1	Other
	4' 6 1/2"	Filler Blocks (14" BCI® 4500s-1.8)	1	1	Other
	3' 4 3/4"	Filler Blocks (14" BCI® 4500s-1.8)	1	1	Other
		3/4in OSB (23/32" APA Rated Sheathing 48/24 Exposure 1)	1	52	MFD

Connector Summary											
PlotID	Qty	Manuf	Product	Flange	Supported Mbr Fasteners	Top Nails	Supporting Mbr Fasteners	Backer Blocks	Web Stiff	Skew	Slope
H100	2	Simpson	IUS1.81/14	None	2- Strong-Grip	-	12- 10d	2 and Filler	No	-	-
H101	9	Simpson	IUS1.81/14	None	2- Strong-Grip	-	Varies	No	No	-	-
H102	6	Simpson	IUS2.06/14	None	2- Strong-Grip	-	12- 10d	2 and Filler	No	-	-

Builders FirstSource
www.bldr.com
Boise Cascade
7601 BOEING DRIVE
GREENSBORO, NC 27409
V (336) 884-5454
4575 HAMPTON ROAD
CLEMMONS, NC 27409
V (336) 712-9910
1135 ROBESON STREET
FAYETTEVILLE, NC 28305
V (910) 485-1111
3189 NC HIGHWAY 5
ABERDEEN NC 28315
V (910) 944-2516

This layout and associated materials list has been prepared based on project plans and/or information provided to Builders FirstSource (BFS). It remains the responsibility of the builder, architect, designer, or other responsible persons to review this information to assure that it is appropriate, accurate, complete and complies with applicable building codes.

- GENERAL NOTES:**
- 1.) READ THE INSTALLATION GUIDE BEFORE FRAMING.
 - 2.) ALL WALLS SHOWN ARE LOAD BEARING UNLESS NOTED OTHERWISE. WALLS NOT SHOWN ARE CONSIDERED NON-LOAD BEARING.
 - 3.) UNLESS STATED OTHERWISE ALL CEILING & ROOF LOADS BRACE DIRECTLY TO LOAD BEARING WALLS SUPPORTED BY FOUNDATION.
 - 4.) CONTACT BUILDERS FIRSTSOURCE BEFORE MAKING ANY ALTERATIONS OR ADJUSTMENTS...FAILURE TO DO SO MAY RESULT IN COSTLY REPAIRS.

DR HORTON
WILMINGTON MASTER LH
SECOND FLOOR EWP PLACEMENT PLAN
Builders FirstSource, Central Carolina Markets
DRAWN BY: ZTU
DATE: 9/11/2023
JOB NUMBER:
SCALE: 1/4" = 1'

MINIMUM DESIGN DATA
LIVE LOAD 40 PSF
DEAD LOAD 10 PSF
TOTAL LOAD 50 PSF
DOL = 100%
DEFLECTION CRITERIA
L/480 (MINIMUM)
ARCHITECTURAL PLAN DATE
XX-XX-XX
REVISED ARCH. PLAN DATE
XX-XX-XX
XXXXXXXX
Sheet
1 of 1