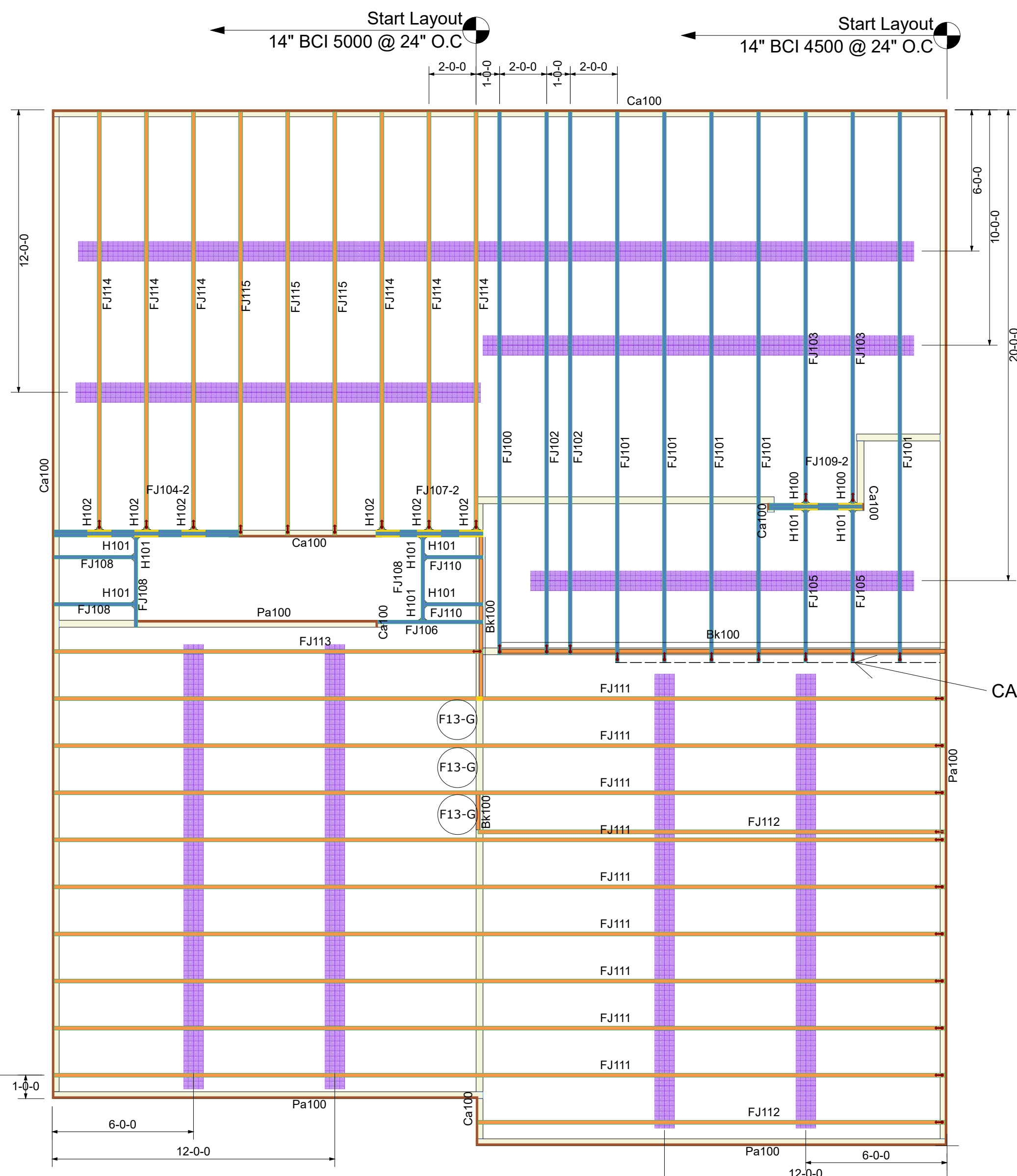


Web	Flange	Depth	Min. Spacing	Max. Spacing
10d	10d	1 1/2"	12"	24"
10d	10d	1 3/4"	12"	24"
10d	10d	2"	12"	24"
10d	10d	2 1/4"	12"	24"
10d	10d	2 3/4"	12"	24"
10d	10d	3"	12"	24"
10d	10d	3 1/4"	12"	24"
10d	10d	3 3/4"	12"	24"
10d	10d	4"	12"	24"
10d	10d	4 1/4"	12"	24"
10d	10d	4 3/4"	12"	24"
10d	10d	5"	12"	24"
10d	10d	5 1/4"	12"	24"
10d	10d	5 3/4"	12"	24"
10d	10d	6"	12"	24"
10d	10d	6 1/4"	12"	24"
10d	10d	6 3/4"	12"	24"
10d	10d	7"	12"	24"
10d	10d	7 1/4"	12"	24"
10d	10d	7 3/4"	12"	24"
10d	10d	8"	12"	24"
10d	10d	8 1/4"	12"	24"
10d	10d	8 3/4"	12"	24"
10d	10d	9"	12"	24"
10d	10d	9 1/4"	12"	24"
10d	10d	9 3/4"	12"	24"
10d	10d	10"	12"	24"
10d	10d	10 1/4"	12"	24"
10d	10d	10 3/4"	12"	24"
10d	10d	11"	12"	24"
10d	10d	11 1/4"	12"	24"
10d	10d	11 3/4"	12"	24"
10d	10d	12"	12"	24"



PlotID	Length	Product	Plies	Net Qty	Fab Type
Bk100	2-0-0	14" BCI@ 5000s-1.8	1	16	FF
Ca100	12-0-0	1" x 14" BC RIM BOARD OSB	1	8	MFD
FJ100	24-0-0	14" BCI@ 4500s-1.8	1	1	MFD
FJ101	24-0-0	14" BCI@ 4500s-1.8	1	5	MFD
FJ102	24-0-0	14" BCI@ 4500s-1.8	1	2	MFD
FJ103	17-0-0	14" BCI@ 4500s-1.8	1	2	MFD
FJ104-2	8-0-0	14" BCI@ 4500s-1.8	2	2	FF
FJ105	7-0-0	14" BCI@ 4500s-1.8	1	2	MFD
FJ106	5-0-0	14" BCI@ 4500s-1.8	1	1	MFD
FJ107-2	5-0-0	14" BCI@ 4500s-1.8	2	2	FF
FJ108	4-0-0	14" BCI@ 4500s-1.8	1	4	MFD
FJ109-2	4-0-0	14" BCI@ 4500s-1.8	2	2	FF
FJ110	3-0-0	14" BCI@ 4500s-1.8	1	2	MFD
FJ111	38-0-0	14" BCI@ 5000s-1.8	1	9	MFD
FJ112	20-0-0	14" BCI@ 5000s-1.8	1	2	MFD
FJ113	19-0-0	14" BCI@ 5000s-1.8	1	1	MFD
FJ114	18-0-0	14" BCI@ 5000s-1.8	1	6	MFD
FJ115	18-0-0	14" BCI@ 5000s-1.8	1	3	MFD
Pa100	12-0-0	1" x 14" BC RIM BOARD OSB	1	8	MFD

PlotID	Length	Product	Plies	Net Qty	Fab Type
1-0-0		Backer Blocks (14" BCI@ 4500s-1.8)	1	16	Other
		Web Stiffeners (14" BCI@ 5000s-1.8)	1	2	Other
6-0-0		Filler Blocks (14" BCI@ 4500s-1.8)	1	1	Other
4-6-8		Filler Blocks (14" BCI@ 4500s-1.8)	1	1	Other
3-4-12		Filler Blocks (14" BCI@ 4500s-1.8)	1	1	Other
		3/4in OSB (23/32" APA Rated Sheathing 48/24 Exposure 1)	1	52	MFD

Slope	Skew	Web Stiff	Backer Blocks	Supporting Mbr Fasteners	Top Nails	Supported Mbr Fasteners	Flange	Product	Manuf	Qty	PlotID
-	-	No	2 and Filler	12- 10d	-	2- Strong-Grip	None	IUS1.81/14	Simpson	2	H100
-	-	No	No	Varies	-	2- Strong-Grip	None	IUS1.81/14	Simpson	9	H101
-	-	No	2 and Filler	12- 10d	-	2- Strong-Grip	None	IUS2.06/14	Simpson	6	H102

Builders FirstSource
www.bldr.com

Boise Cascade
7601 BOEING DRIVE
GREENSBORO, NC 27409
V (336) 884-5454

4575 HAMPTON ROAD
CLEMMONS, NC 27409
V (336) 712-9910

1135 ROBESON STREET
FAYETTEVILLE, NC 28305
V (910) 485-1111

3189 NC HIGHWAY 5
ABERDEEN NC 28315
V (910) 944-2516

This layout and associated materials list has been prepared based on project plans and/or information provided to Builders FirstSource (BFS). It remains the responsibility of the builder, architect, designer, or other responsible persons to review this information to assure that it is appropriate, accurate, complete and complies with applicable building codes.

GENERAL NOTES:

- 1.) READ THE INSTALLATION GUIDE BEFORE FRAMING.
- 2.) ALL WALLS SHOWN ARE LOAD BEARING UNLESS NOTED OTHERWISE. WALLS NOT SHOWN ARE CONSIDERED NON-LOAD BEARING.
- 3.) UNLESS STATED OTHERWISE ALL CEILING & ROOF LOADS BRACE DIRECTLY TO LOAD BEARING WALLS SUPPORTED BY FOUNDATION.
- 4.) CONTACT BUILDERS FIRSTSOURCE BEFORE MAKING ANY ALTERATIONS OR ADJUSTMENTS...FAILURE TO DO SO MAY RESULT IN COSTLY REPAIRS.

DR HORTON

WILMINGTON MASTER RH

SECOND FLOOR EWP PLACEMENT PLAN

Builders FirstSource, Central Carolina Markets

DRAWN BY: ZTU DATE: 9/11/2023

SCALE: 1/4" = 1' JOB NUMBER:

MINIMUM DESIGN DATA

LIVE LOAD 40 PSF
DEAD LOAD 10 PSF

TOTAL LOAD 50 PSF

DOL = 100%

DEFLECTION CRITERIA
L/480 (MINIMUM)

ARCHITECTURAL PLAN DATE
XX-XX-XX

REVISED ARCH. PLAN DATE
XX-XX-XX

XXXXXXXX

Sheet
1 of 1