

**DN01 DO NOT** cut, notch or drill flanges

**DN04 DO NOT** cut holes near bearing support

**F15-A** BCI joists are intended only for applications that provide permanent protection from the weather.

**F01** See Boise literature for joist blocking vertical load capacity.

**F06** Load bearing wall above (stacked over wall below)

**F07** See Boise literature for vertical load capacity.

**F16-D** Backer Block

**F08** Solid block all posts from above to bearing below.

**F09** Load bearing wall above (stacked over wall below)

**F10** Backer block (12" wide min.) Nail with 10-10d nails. Install tight to top flange.

**F18** See Boise literature for vertical load capacity.

**F52** 8d each side of web through flange at bearing

**F58** Double BCI Joist Connection

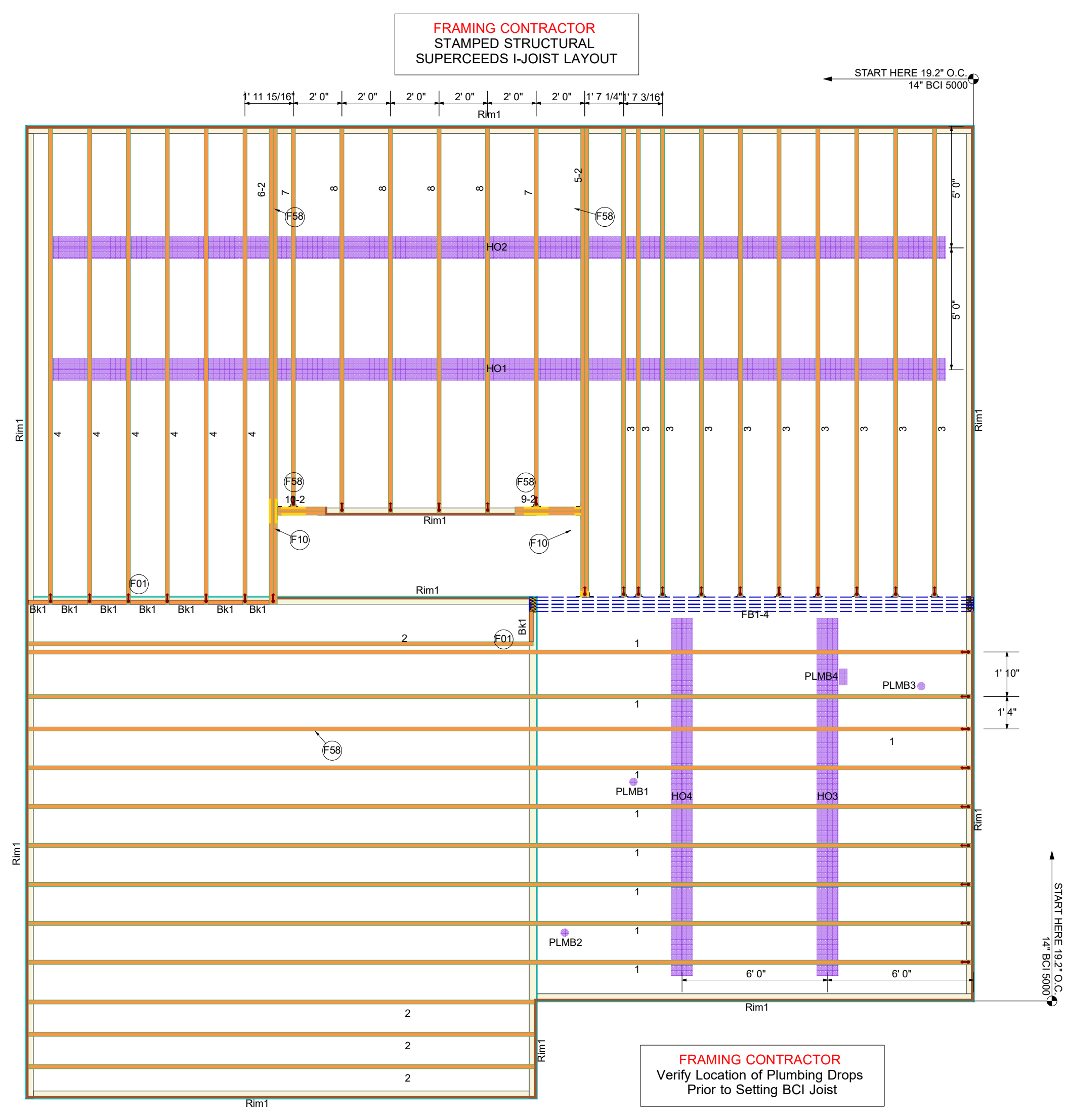
**Boise Rimboard**

**"Top Mount"**

**"Face Mount"**

**Web-Filler**

**Filler Block**



Products				
PlotID	Length	Product	Plies	Net Qty
1	39' 0"	14" BCI@ 5000s-1.8	1	9
2	21' 0"	14" BCI@ 5000s-1.8	1	4
3	20' 0"	14" BCI@ 5000s-1.8	1	10
4	20' 0"	14" BCI@ 5000s-1.8	1	6
5-2	20' 0"	14" BCI@ 5000s-1.8	2	2
6-2	20' 0"	14" BCI@ 5000s-1.8	2	2
7	16' 0"	14" BCI@ 5000s-1.8	1	2
8	16' 0"	14" BCI@ 5000s-1.8	1	4
9-2	3' 0"	14" BCI@ 5000s-1.8	2	2
10-2	2' 0"	14" BCI@ 5000s-1.8	2	2
FB1-4	20' 0"	1-3/4" x 14" VERSA-LAM@ LVL 2.1E 3100 SP	4	4
Rim1	12' 0"	1" x 14" BC RIM BOARD OSB	1	15
Bk1	11' 0"	14" BCI@ 5000s-1.8	1	1

Hangers		
PlotID	Qty	Product
H1	12	Simpson IUS2.06/14
H2	3	Simpson MIU4.12/14

**Builders FirstSource**

www.bldr.com

**Boise Cascade**  
7601 BOEING DRIVE  
GREENSBORO, NC 27409  
V (336) 884-5454

4575 HAMPTON ROAD  
CLEMMONS, NC 27409  
V (336) 712-9910

1135 ROBESON STREET  
FAYETTEVILLE, NC 28305  
V (910) 485-1111

3189 NC HIGHWAY 5  
ABERDEEN NC 28315  
V (910) 944-2516

This layout and associated materials list has been prepared based on project plans and/or information provided to Builders FirstSource (BFS). It remains the responsibility of the builder, architect, designer, or other responsible persons to review this information to assure that it is appropriate, accurate, complete and complies with applicable building codes.

- GENERAL NOTES:**
- 1.) READ THE INSTALLATION GUIDE BEFORE FRAMING.
  - 2.) ALL WALLS SHOWN ARE LOAD BEARING UNLESS NOTED OTHERWISE. WALLS NOT SHOWN ARE CONSIDERED NON-LOAD BEARING.
  - 3.) UNLESS STATED OTHERWISE ALL CEILING & ROOF LOADS BRACE DIRECTLY TO LOAD BEARING WALLS SUPPORTED BY FOUNDATION.
  - 4.) CONTACT BUILDERS FIRSTSOURCE BEFORE MAKING ANY ALTERATIONS OR ADJUSTMENTS...FAILURE TO DO SO MAY RESULT IN COSTLY REPAIRS.

**DR HORTON**

**NGT019 - HAYDEN**

SECOND FLOOR EWP PLACEMENT PLAN

**Builders FirstSource, Central Carolina Markets**

DRAWN BY: ZTU DATE: 3/29/2024 JOB NUMBER: 3876564

SCALE: 1/4" = 1'

MINIMUM DESIGN DATA

LIVE LOAD 40 PSF  
DEAD LOAD 10 PSF

TOTAL LOAD 50 PSF

DOL = 100%

DEFLECTION CRITERIA L/480 (MINIMUM)

ARCHITECTURAL PLAN DATE **XX-XX-XX**

REVISED ARCH. PLAN DATE **XX-XX-XX**

**XXXXXXXX**

Wall Legend	
	Bearing Wall
	Non-Load Bearing Wall