

**CONNECTION OF MULTIPLE PIECES OF TOP-LOADED BEAMS**  
 LVL & PSL (1 3/4" Width Pieces)  
 • Minimum of 2 rows 16d (3 1/2") nails @ 12" o.c.  
 • Minimum of 3 rows 16d (3 1/2") nails @ 12" o.c. for 1 1/2", 1 3/4", 1 1/2" beams.  
 • Multiple pieces of LVL & PSL can be nailed or bolted together to form a header or beam of the required size, up to a maximum width of 7 inches. Minimum of 2 rows 1 1/2" bolts @ 24" o.c. staggered.

**L6**  
 For side-loaded multiple member beams, additional nailing or bolting may be required. See current Joist Standards.

### ENGINEERED WOOD MATERIAL LIST

DR HORTON  
HAYDEN  
2ND FLOOR I-JOIST PLACEMENT PLAN

BASE - ALL ELEVATIONS			
MARK	QTY	CUT LENGTH	DESCRIPTION (Notes)
2	2	2'-0"	2" x 14" BCI 5000
3	2	3'-0"	2" x 14" BCI 5000
16a	8	16'-0"	2" x 14" BCI 5000 < 2 >
20a	20	20'-0"	2" x 14" BCI 5000 < 2 >
21	6	21'-0"	2" x 14" BCI 5000
39a	11	39'-0"	2" x 14" BCI 5000 < 2 > [Total 1048']

BEAMS AND HEADERS			
LVL1	4	20'-0"	1 3/4" x 14" LVL 2.0E (Flush)

ACCESSORIES & OTHER MATERIALS (Simpson Hangers)			
ITEM	QTY	UNIT	DESCRIPTION
14" Rim	177	LF	1 1/2" x 14" Rim 15 pcs@12' or 12 pcs@16'
BP	6	1'-5 1/8"	14" Blocking Panel [Total 12']
H4c	3	PCS	M1U4.28/14 Double Face Mint Hanger
H3c	12	PCS	IUS2.06/14 Single Face Mint Hanger
10CUT14C	78	HOLE	10" Circular Cutout
BCLAYOUT	1	PCS	BCI Placement Layout
BGGUIDE	1	PCS	BCI Installation Guide

SEE MATERIAL LIST FOR DEPTH, SERIES & LENGTH

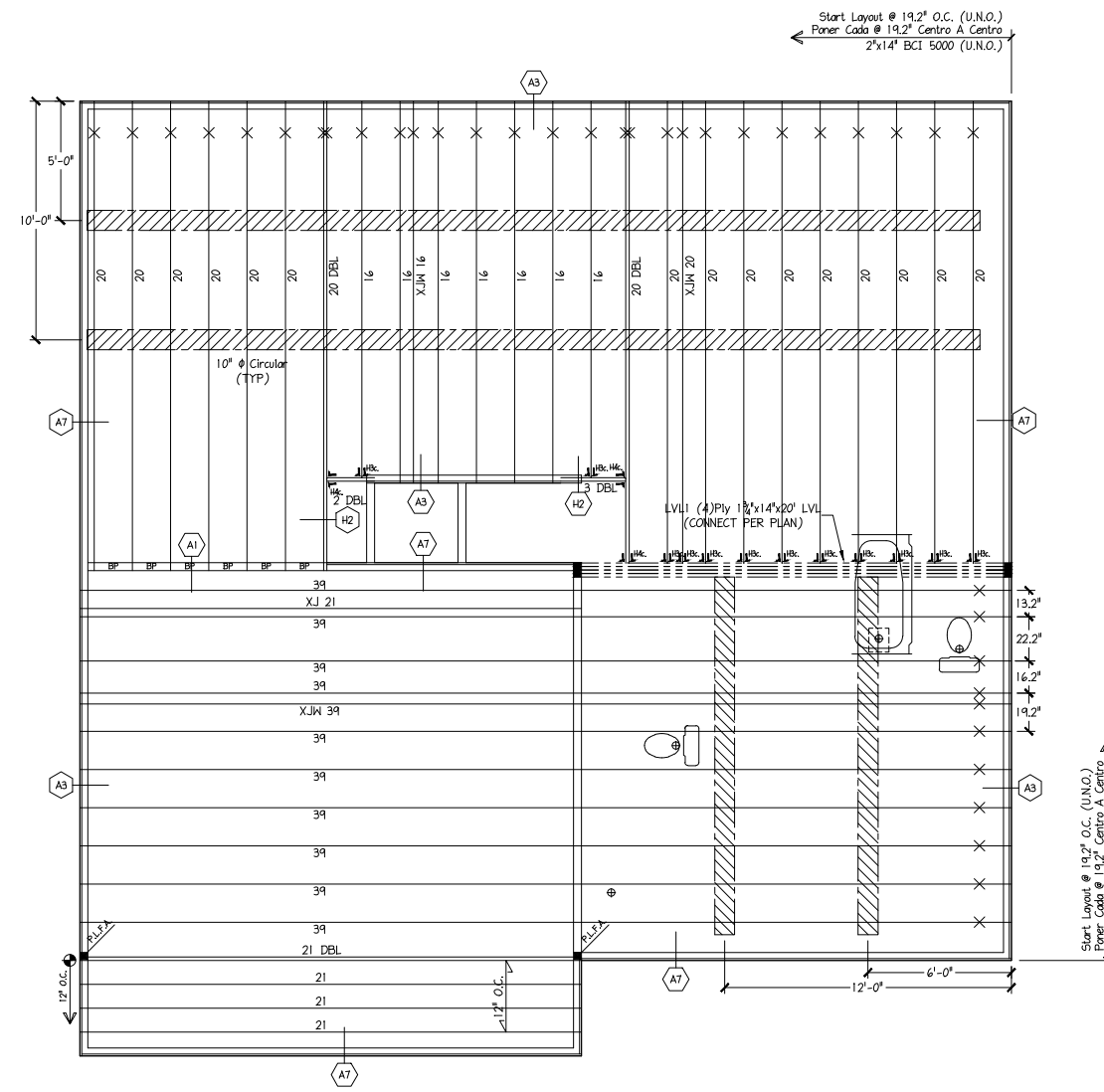
INDICATED I-JOIST  
 INDICATED FIBERGLASS W/FR. LIN.  
 INDICATED FIBERGLASS LIN.  
 INDICATED PARALLEL PCL  
 INDICATED BULKHEAD

INDICATED A SECTION FROM THE INSTALLATION GUIDE SETTING IS ALSO SHOWN ON THIS SHEET

LOAD BEARING WALL ABOVE  
 BEAM BY CHAINS  
 EXTRA JOIST ADDED  
 EXTRA JOIST (1) UNDER WALL  
 DOUBLE JOIST (2)  
 TYPICAL JOIST (2)  
 1-JOIST BLOCKING PANEL  
 1-JOIST OR 1 1/2" MIN WITH BOARD  
 CONCENTRATED POINT LOAD FROM ABOVE  
 DEEP BEAM  
 FLUSH BEAM

THIS SHOP DRAWING IS BASED ON THE FOLLOWING

PROJECT LOCATION	PROJECT NUMBER	ARCHITECT DWG# BY	DATE
		ARCH LATEST REVISION	
		CHECKED BY	
		STRUCTURAL REVIEW BY	



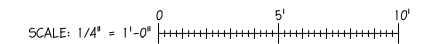
2ND FLOOR I-JOIST PLACEMENT PLAN  
DR HORTON - HAYDEN

**I-Joists**

12BC14500 = 12TJI110  
 12BC15000 = 12TJI210  
 14BC14500 = 14TJI110  
 14BC15000 = 14TJI210  
 14BC16000 = 14TJI230  
 16BC15000 = 16TJI210  
 16BC16000 = 16TJI360

**POINT LOAD FROM ABOVE (P.L.F.A.)**

P.L.F.A. USE SOLID BLOCKING TO TRANSFER LOAD FROM ABOVE TO FOUNDATION



REV	BY	DATE / DESC.
SD	SLH	11/24/21

**DESIGN DATA**

LIVE	40 PSF
DEAD	10 PSF
TOTAL LOAD	= 50 PSF
STRESS DURATION	= 100%
DEFLECTION CRITERIA	= (L/480)

**Builders FirstSource**

1800 MANUFACTURER INSTALLATION GUIDE BECOME FAMILIAR. COORDINATE APPROPRIATE GUIDE FOR EACH JOIST TYPE. ALWAYS USE THE MOST RECENT EDITION OF THE INSTALLATION GUIDE. THE INSTALLATION GUIDE IS THE ONLY AUTHORITY FOR ALL JOIST INFORMATION. CONTACT YOUR LOCAL BUILDERS FIRSTSOURCE REPRESENTATIVE FOR MORE INFORMATION. THE INSTALLATION GUIDE IS THE ONLY AUTHORITY FOR ALL JOIST INFORMATION. CONTACT YOUR LOCAL BUILDERS FIRSTSOURCE REPRESENTATIVE FOR MORE INFORMATION.

BUILDER: DR HORTON  
 MODEL: HAYDEN  
 2ND FLOOR I-JOIST PLACEMENT PLAN  
 TIME: TUESDAY, 18 OCTOBER 2022 - 12:57 AM  
 FILE: I:\APEX\11\ACADDWG\DR\_HORTON\HAYDEN.DWG

DRAWN BY: NJH DATE: 9/16/21  
 SHEET: 2 OF 2 SHEETS