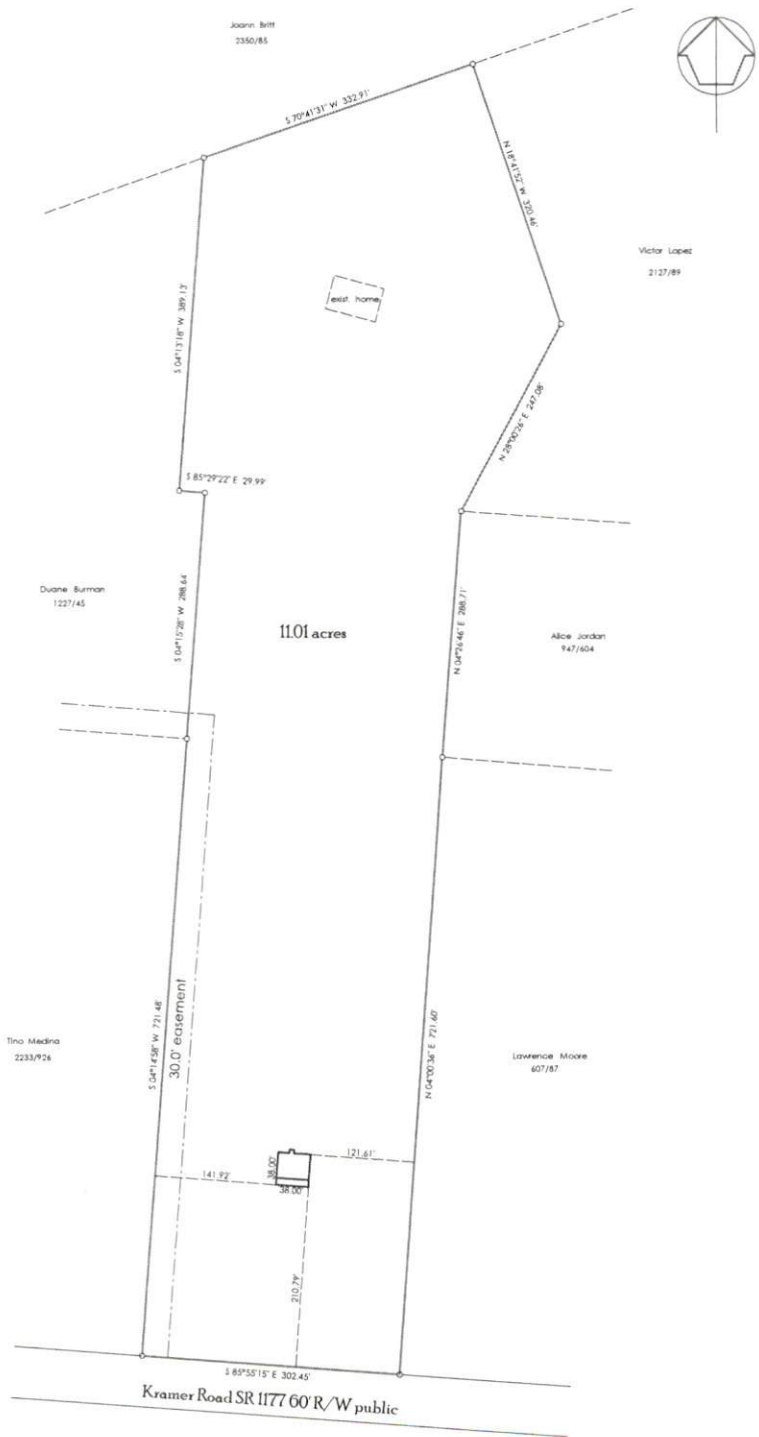


site plan
Patrick J. and Alice A. O'Kelley
 plat book 2012 page 88-89
 Barbecue Township
 Harnett County N.C.
 Scale 1" = 100' Feb. 13, 2024



George L. Lott, PLS L-1379



George L. Lott Professional
 Land Surveyor
 126 Rowland Circle, Fayetteville, N.C. 28301
 Phone: 910-494-2178 email: glott@ncslr.com

