

Trenco
818 Soundside Rd
Edenton, NC 27932

Re: 4114987(R)
Great Southern homes-Lot 7 Griffon pointe

The truss drawing(s) referenced below have been prepared by Truss Engineering Co. under my direct supervision based on the parameters provided by Stock Building Supply.

Pages or sheets covered by this seal: T34733204 thru T34733206

My license renewal date for the state of North Carolina is December 31, 2024.

North Carolina COA: C-0844



August 15, 2024

O'Regan, Philip

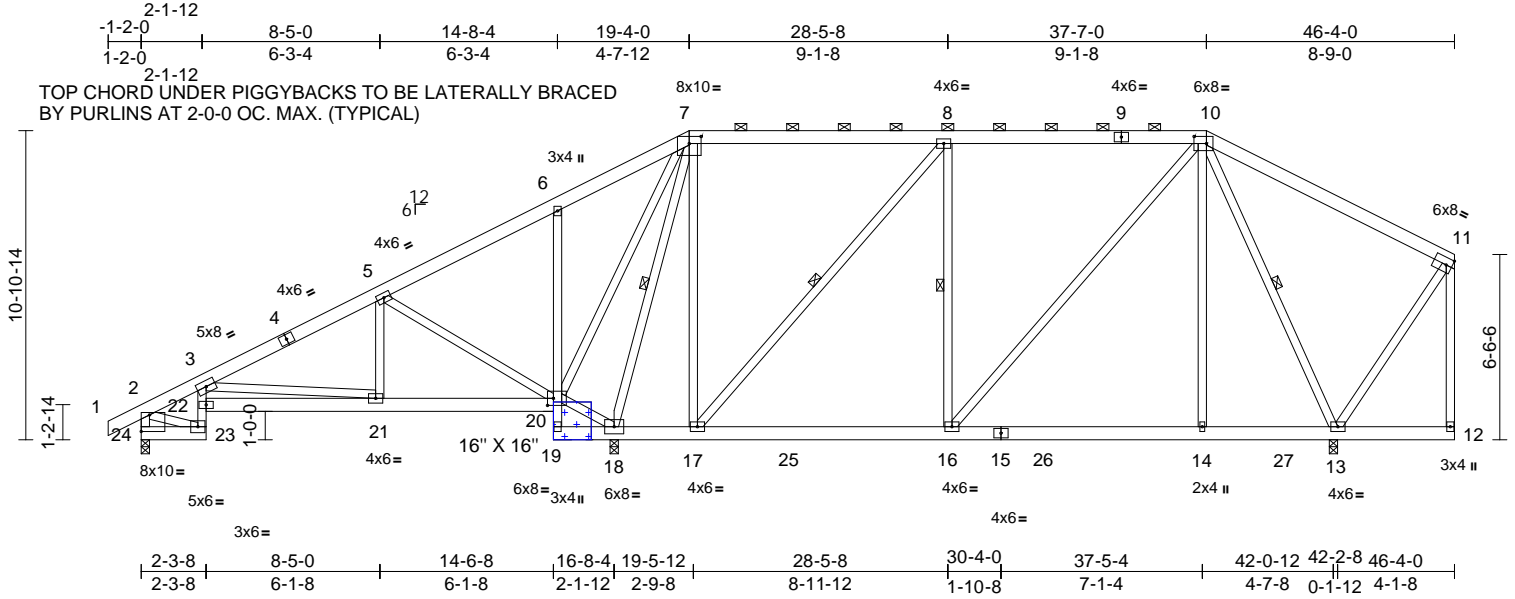
IMPORTANT NOTE: The seal on these truss component designs is a certification that the engineer named is licensed in the jurisdiction(s) identified and that the designs comply with ANSI/TPI 1. These designs are based upon parameters shown (e.g., loads, supports, dimensions, shapes and design codes), which were given to MiTek or TRENCO. Any project specific information included is for MiTek's or TRENCO's customers file reference purpose only, and was not taken into account in the preparation of these designs. MiTek or TRENCO has not independently verified the applicability of the design parameters or the designs for any particular building. Before use, the building designer should verify applicability of design parameters and properly incorporate these designs into the overall building design per ANSI/TPI 1, Chapter 2.

Job 4114987(R)	Truss A22-R1	Truss Type Piggyback Base	Qty 1	Ply 1	Great Southern homes-Lot 7 Griffon pointe Job Reference (optional)	T34733204
-------------------	-----------------	------------------------------	----------	----------	---	-----------

Builders FirstSource (Middlesex, NC), Middlesex, NC - 27557,

Run: 8.63 S Jul 12 2024 Print: 8.630 S Jul 12 2024 MiTek Industries, Inc. Wed Aug 14 08:51:46
ID:z22SAMA56yxcBjWxt?B3pyQXVH-RfC?PsB70Hq3NSgPqnL8w3ulTXbGKWrCdoi7J4zJC7f

Page: 1



Scale = 1:81.3

REPAIR(S) REQUIRED SEE NOTES 1 AND 2.

Plate Offsets (X, Y): [7:0-5-0,0-3-0], [10:0-5-4,0-3-0], [20:0-2-8,0-3-0], [24:Edge,0-7-0]

Loading	(psf)	Spacing	2-0-0	CSI	DEFL	in (loc)	l/defl	L/d	PLATES	GRIP
TCLL (roof)	20.0	Plate Grip DOL	1.00	TC	0.54	Vert(LL)	-0.07	16-17	>999	240
TCDL	10.0	Lumber DOL	1.15	BC	0.77	Vert(CT)	-0.13	16-17	>999	180
BCLL	0.0*	Rep Stress Incr	YES	WB	0.91	Horz(CT)	0.06	13	n/a	n/a
BCDL	10.0	Code	IRC2015/TPI2014	Matrix-MS						
									Weight: 422 lb	FT = 20%

LUMBER

TOP CHORD 2x6 SP No.2
BOT CHORD 2x6 SP No.2 *Except* 23-3,6-19:2x4 SP No.3
WEBS 2x4 SP No.3 *Except* 17-8,16-10:2x4 SP No.2

BRACING

TOP CHORD Structural wood sheathing directly applied or 6-0-0 oc purlins, except end verticals, and 2-0-0 oc purlins (6-0-0 max.): 7-10.
BOT CHORD Rigid ceiling directly applied or 6-0-0 oc bracing.

WEBS 1 Row at midpt 7-18, 8-17, 8-16, 10-13

REACTIONS (size) 13=0-3-8, 18=0-3-8, 24=0-3-8
Max Horiz 24=303 (LC 7)
Max Uplift 13=-166 (LC 11), 18=-441 (LC 10), 24=-9 (LC 10)
Max Grav 13=1345 (LC 24), 18=2141 (LC 1), 24=454 (LC 21)

FORCES (lb) - Maximum Compression/Maximum Tension

TOP CHORD 1-2=0/35, 2-3=-404/72, 3-5=-356/36, 5-6=-223/549, 6-7=-155/555, 7-8=-46/211, 8-10=-597/269, 10-11=-72/259, 2-24=-470/143, 11-12=-24/62
BOT CHORD 23-24=-267/129, 22-23=-98/32, 3-22=-52/89, 21-22=-226/622, 20-21=-21/188, 19-20=-168/55, 6-20=-293/216, 18-19=-31/0, 17-18=-233/265, 16-17=-114/597, 14-16=-79/370, 13-14=-80/366, 12-13=-79/84
WEBS 3-21=-455/251, 5-21=0/349, 5-20=-684/242, 18-20=-621/383, 7-20=-96/294, 7-18=-1554/287, 7-17=-25/765, 8-17=-928/197, 8-16=-34/288, 10-16=-127/344, 10-14=0/387, 10-13=-1161/149, 2-23=-8/330, 11-13=-245/223

NOTES

- 1) Repair Condition: Missing or damaged plate(s) on one side(s) of truss at joint(s) 19.
- 2) Attach 16"H X 16"W X 7/16" OSB (APA Rated Sheathing 24/16 Exposure 1) gusset to both sides of truss at joint 19 with 10d (0.131"x3") nails from each face, driven through both sheets of plywood and clinched. Connected together as follows: 2x6 - 3 rows 0-4-0 o.c., 2x4 - 2 rows 0-4-0 o.c. Minimum 0-3-0 end distance.
- 3) N/A
- 4) N/A
- 5) Unbalanced roof live loads have been considered for this design.
- 6) Wind: ASCE 7-10; Vult=130mph (3-second gust) Vasd=103mph; TCDL=6.0psf; BCDL=6.0psf; h=30ft; Cat. II; Exp B; Enclosed; MWFRS (envelope) exterior zone and C-C Exterior (2) zone; cantilever left and right exposed; end vertical left and right exposed; C-C for members and forces & MWFRS for reactions shown; Lumber DOL=1.60 plate grip DOL=1.33
- 7) Provide adequate drainage to prevent water ponding.
- 8) This truss has been designed for a 10.0 psf bottom chord live load nonconcurrent with any other live loads.
- 9) * This truss has been designed for a live load of 20.0psf on the bottom chord in all areas where a rectangle 3-06-00 tall by 2-00-00 wide will fit between the bottom chord and any other members, with BCDL = 10.0psf.
- 10) Provide mechanical connection (by others) of truss to bearing plate capable of withstanding 9 lb uplift at joint 24, 441 lb uplift at joint 18 and 166 lb uplift at joint 13.
- 11) This truss is designed in accordance with the 2015 International Residential Code sections R502.11.1 and R802.10.2 and referenced standard ANSI/TPI 1.

12) Graphical purlin representation does not depict the size or the orientation of the purlin along the top and/or bottom chord.

LOAD CASE(S) Standard



August 15, 2024

WARNING - Verify design parameters and READ NOTES ON THIS AND INCLUDED MITEK REFERENCE PAGE MII-7473 rev. 1/2/2023 BEFORE USE.

Design valid for use only with MiTek® connectors. This design is based only upon parameters shown, and is for an individual building component, not a truss system. Before use, the building designer must verify the applicability of design parameters and properly incorporate this design into the overall building design. Bracing indicated is to prevent buckling of individual truss web and/or chord members only. Additional temporary and permanent bracing is always required for stability and to prevent collapse with possible personal injury and property damage. For general guidance regarding the fabrication, storage, delivery, erection and bracing of trusses and truss systems, see ANSI/TPI1 Quality Criteria and DSB-22 available from Truss Plate Institute (www.tpinst.org) and BCSI Building Component Safety Information available from the Structural Building Component Association (www.sbcacomponents.com)

ENGINEERING BY
TRENCO
A MiTek Affiliate

818 Soundside Road
Edenton, NC 27932

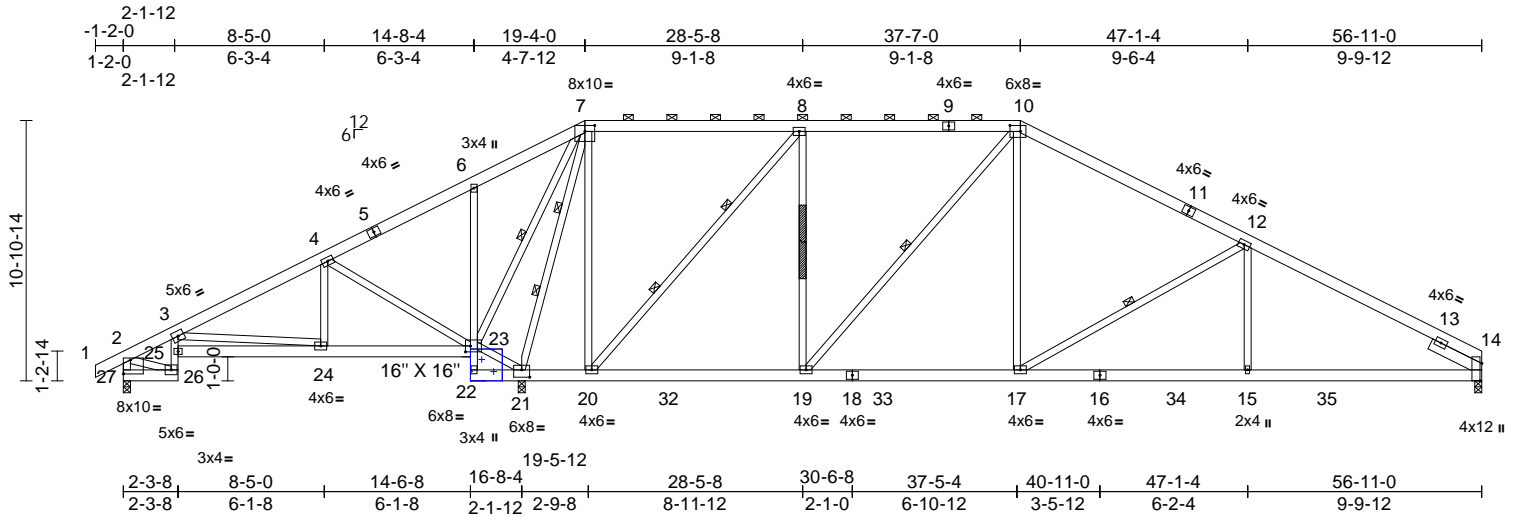
Job 4114987(R)	Truss A23	Truss Type Piggyback Base	Qty 1	Ply 1	Great Southern homes-Lot 7 Griffon pointe T34733205
					Job Reference (optional)

Builders FirstSource (Middlesex, NC), Middlesex, NC - 27557,

Run: 8.63 S Jul 12 2024 Print: 8.630 S Jul 12 2024 MiTek Industries, Inc. Wed Aug 14 08:51:47

Page: 1

ID:Z0QAHyXpUrDp9BtFuTqLyQUo-RfC?PsB70Hq3NSgPqnL8w3ulTXbGKwRCdoi7J4zJC7f



Scale = 1:96.5

REPAIR(S) REQUIRED SEE NOTES 1, 2, 3 AND 4.

Plate Offsets (X, Y): [7:0-5-0,0-3-0], [10:0-5-4,0-3-0], [14:0-8-12,Edge], [21:0-4-0,0-3-12], [23:0-2-8,0-3-0], [27:Edge,0-7-0]

Loading	(psf)	Spacing	2-0-0	CSI	DEFL	in	(loc)	l/defl	L/d	PLATES	GRIP
TCLL (roof)	20.0	Plate Grip DOL	1.00	TC	0.72	Vert(LL)	-0.14	15-17	>999	240	MT20 244/190
TCDL	10.0	Lumber DOL	1.15	BC	0.81	Vert(CT)	-0.28	15-17	>999	180	
BCLL	0.0*	Rep Stress Incr	YES	WB	1.00	Horz(CT)	0.10	14	n/a	n/a	
BCDL	10.0	Code	IRC2015/TPI2014	Matrix-MS							Weight: 473 lb FT = 20%

LUMBER
TOP CHORD 2x6 SP No.2
BOT CHORD 2x6 SP No.2 *Except* 26-3,6-22:2x4 SP No.3
WEBS 2x4 SP No.3 *Except* 20-8,19-10:2x4 SP No.1
SLIDER Right 2x6 SP No.2 -- 2-5-0

BRACING
TOP CHORD Structural wood sheathing directly applied or 3-1-13 oc purlins, except end verticals, and 2-0-0 oc purlins (6-0-0 max.): 7-10.
BOT CHORD Rigid ceiling directly applied or 6-0-0 oc bracing.
WEBS 1 Row at midpt 7-23, 10-19, 12-17
WEBS 2 Rows at 1/3 pts 7-21, 8-20

REACTIONS (size)
14=0-3-8, 21=0-3-8, 27=0-3-8
Max Horiz 27=170 (LC 10)
Max Uplift 14=-261 (LC 11), 21=-409 (LC 10), 27=-31 (LC 11)
Max Grav 14=1504 (LC 24), 21=2971 (LC 1), 27=302 (LC 21)

FORCES (lb) - Maximum Compression/Maximum Tension
TOP CHORD 1-2=0/35, 2-3=-205/117, 3-4=-114/492, 4-6=-156/1010, 6-7=-44/1015, 7-8=0/361, 8-10=-1013/373, 10-12=-1667/444, 12-14=-2384/520, 2-27=-301/131
BOT CHORD 26-27=-157/154, 25-26=-26/49, 3-25=0/127, 24-25=-241/329, 23-24=-413/182, 22-23=-238/68, 6-23=-296/217, 21-22=-46/0, 20-21=-340/284, 19-20=-96/1013, 17-19=-58/1403, 15-17=-335/2041, 14-15=-335/2041

WEBS
3-24=-495/248, 4-24=0/348, 4-23=-673/234, 21-23=-939/427, 7-23=-200/136, 7-21=-2164/380, 7-20=-143/1377, 8-20=-1815/370, 8-19=-3/869, 10-19=-646/144, 10-17=-53/717, 12-17=-780/327, 12-15=0/355, 2-26=-74/157

- NOTES**
- 1) Repair Condition: web has 0-1-0 long break centered at 4-7-9 below joint 8.
 - 2) Repair Condition: Missing or damaged plate(s) on one side(s) of truss at joint(s) 22.
 - 3) Apply 48" long 2x4 SP No.2 scab to front side(s) of truss centered on damage located 4-7-9 below joint 8 with 2 row(s) of 10d (0.131"x3") nails spaced 2" o.c. from front face. Minimum 0-3-0 end distance.
 - 4) Attach 16"H X 16"W X 7/16" OSB (APA Rated Sheathing 24/16 Exposure 1) gusset to both sides of truss at joint 22 with 10d (0.131"x3") nails from each face, driven through both sheets of plywood and clinched. Connected together as follows: 2x6 - 3 rows 0-4-0 o.c., 2x4 - 2 rows 0-4-0 o.c. Minimum 0-3-0 end distance.
 - 5) N/A
 - 6) N/A
 - 7) Unbalanced roof live loads have been considered for this design.
 - 8) Wind: ASCE 7-10; Vult=130mph (3-second gust) Vasd=103mph; TCDL=6.0psf; BCDL=6.0psf; h=30ft; Cat. II; Exp B; Enclosed; MWFRS (envelope) exterior zone and C-C Exterior (2) zone; cantilever left and right exposed; end vertical left and right exposed; C-C for members and forces & MWFRS for reactions shown; Lumber DOL=1.60 plate grip DOL=1.33
 - 9) Provide adequate drainage to prevent water ponding.

- 10) This truss has been designed for a 10.0 psf bottom chord live load nonconcurrent with any other live loads.
 - 11) * This truss has been designed for a live load of 20.0psf on the bottom chord in all areas where a rectangle 3-06-00 tall by 2-00-00 wide will fit between the bottom chord and any other members, with BCDL = 10.0psf.
 - 12) Provide mechanical connection (by others) of truss to bearing plate capable of withstanding 31 lb uplift at joint 27, 409 lb uplift at joint 21 and 261 lb uplift at joint 14.
 - 13) This truss is designed in accordance with the 2015 International Residential Code sections R502.11.1 and R802.10.2 and referenced standard ANSI/TPI 1.
 - 14) Graphical purlin representation does not depict the size or the orientation of the purlin along the top and/or bottom chord.
- LOAD CASE(S)** Standard



August 15, 2024

WARNING - Verify design parameters and READ NOTES ON THIS AND INCLUDED MITEK REFERENCE PAGE MII-7473 rev. 1/2/2023 BEFORE USE.

Design valid for use only with MiTek® connectors. This design is based only upon parameters shown, and is for an individual building component, not a truss system. Before use, the building designer must verify the applicability of design parameters and properly incorporate this design into the overall building design. Bracing indicated is to prevent buckling of individual truss web and/or chord members only. Additional temporary and permanent bracing is always required for stability and to prevent collapse with possible personal injury and property damage. For general guidance regarding the fabrication, storage, delivery, erection and bracing of trusses and truss systems, see **ANSI/TPI Quality Criteria and DSB-22** available from Truss Plate Institute (www.tpinst.org) and **BCSI Building Component Safety Information** available from the Structural Building Component Association (www.sbcacomponents.com)

ENGINEERING BY
TRENCO
A MiTek Affiliate

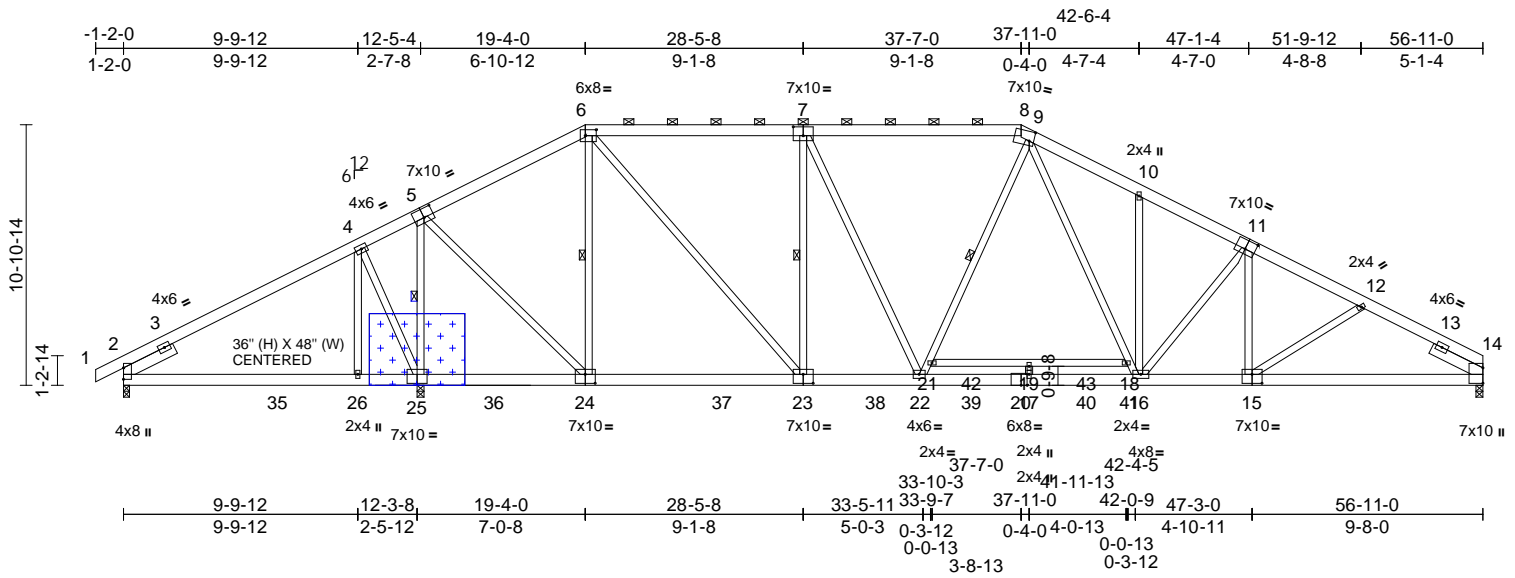
818 Soundside Road
Edenton, NC 27932

Job 4114987(R)	Truss A25A	Truss Type Piggyback Base	Qty 1	Ply 1	Great Southern homes-Lot 7 Griffon pointe Job Reference (optional)	T34733206
-------------------	---------------	------------------------------	----------	----------	---	-----------

Builders FirstSource (Middlesex, NC), Middlesex, NC - 27557,

Run: 8.63 S Jul 12 2024 Print: 8.630 S Jul 12 2024 MiTek Industries, Inc. Wed Aug 14 08:51:47
ID:qKvrlMg_5S3ezgj4F56bBYyQXLb-RfC?PsB70Hq3NSgPqnL8w3uITXbGKwRcDoi7J4zJC7f

Page: 1



Scale = 1:96.5

REPAIR(S) REQUIRED SEE NOTES 1 AND 2.

Plate Offsets (X, Y): [5:0-5-0,0-4-8], [6:0-5-8,0-3-0], [7:0-5-0,0-4-8], [8:0-2-4,0-4-12], [11:0-5-0,0-4-8], [15:0-5-0,0-4-8], [20:0-3-0,Edge], [23:0-5-0,0-4-8], [24:0-5-0,0-4-8], [25:0-5-0,0-4-8]

Loading	(psf)	Spacing	2-0-0	CSI	DEFL	in	(loc)	l/defl	L/d	PLATES	GRIP	
TCLL (roof)	20.0	Plate Grip DOL	1.00	TC	0.76	Vert(LL)	-0.22	19	>999	240	MT20	244/190
TCDL	10.0	Lumber DOL	1.15	BC	0.88	Vert(CT)	-0.43	19	>999	180		
BCLL	0.0*	Rep Stress Incr	YES	WB	0.69	Horz(CT)	0.09	14	n/a	n/a		
BCDL	10.0	Code	IRC2015/TPI2014	Matrix-MS							Weight: 480 lb	FT = 20%

LUMBER
TOP CHORD 2x6 SP No.2
BOT CHORD 2x6 SP No.2 *Except* 18-21:2x4 SP No.2
WEBS 2x4 SP No.3 *Except* 23-6:2x4 SP No.2
SLIDER Left 2x6 SP No.2 -- 2-5-0, Right 2x6 SP No.2 -- 2-5-0

BRACING
TOP CHORD Structural wood sheathing directly applied or 2-6-11 oc purlins, except 2-0-0 oc purlins (4-7-11 max.): 6-8.
BOT CHORD Rigid ceiling directly applied or 6-0-0 oc bracing.
WEBS 1 Row at midpt 6-24, 7-23, 5-25, 9-22

REACTIONS (size) 2=0-3-0, 14=0-3-8, 25=0-3-8
Max Horiz 2=181 (LC 10)
Max Uplift 2=-170 (LC 7), 14=-211 (LC 11), 25=-133 (LC 10)
Max Grav 2=604 (LC 21), 14=1888 (LC 2), 25=2601 (LC 2)

FORCES (lb) - Maximum Compression/Maximum Tension
TOP CHORD 1-2=0/31, 2-4=-397/479, 4-6=-1358/514, 6-8=-2213/621, 8-9=-2029/559, 9-10=-2930/723, 10-12=-3004/617, 12-14=-2987/634
BOT CHORD 2-26=-301/355, 22-26=-301/2053, 17-22=-171/2141, 16-17=-171/2141, 14-16=-470/2689, 19-21=-24/39, 18-19=-24/39

WEBS 6-24=-875/126, 6-23=-161/1431, 7-23=-893/192, 11-15=-145/63, 4-25=-678/526, 4-26=-258/340, 5-25=-1908/147, 5-24=-25/1657, 21-22=-100/203, 9-21=-71/260, 9-18=-205/975, 16-18=-239/924, 17-19=-204/0, 10-16=-268/183, 11-16=-337/183, 7-22=0/458, 12-15=0/244

- NOTES**
- 1) Repair Condition: Missing or damaged plate(s) on one side(s) of truss at joint(s) 25.
 - 2) Attach 36"H X 48"W X 3/4" Plywood or OSB (23/32" APA Rated Sheathing 48/24 Exposure 1) gusset to both sides of truss at joint 25 with 8d (0.131"x2.5") nails from each face, driven through both sheets of plywood. Connected together as follows: 2x6 - 4 rows 0-4-0 o.c., 2x4 - 3 rows 0-4-0 o.c. Minimum 0-3-0 end distance.
 - 3) N/A
 - 4) Unbalanced roof live loads have been considered for this design.
 - 5) Wind: ASCE 7-10; Vult=130mph (3-second gust) Vasd=103mph; TCDL=6.0psf; BCDL=6.0psf; h=30ft; Cat. II; Exp B; Enclosed; MWFRS (envelope) exterior zone and C-C Exterior (2) zone; cantilever left and right exposed ; end vertical left and right exposed; porch left exposed; C-C for members and forces & MWFRS for reactions shown; Lumber DOL=1.60 plate grip DOL=1.33
 - 6) Provide adequate drainage to prevent water ponding.
 - 7) This truss has been designed for a 10.0 psf bottom chord live load nonconcurrent with any other live loads.
 - 8) * This truss has been designed for a live load of 20.0psf on the bottom chord in all areas where a rectangle 3-06-00 tall by 2-00-00 wide will fit between the bottom chord and any other members, with BCDL = 10.0psf.

- 9) Provide mechanical connection (by others) of truss to bearing plate capable of withstanding 170 lb uplift at joint 2, 133 lb uplift at joint 25 and 211 lb uplift at joint 14.
- 10) This truss is designed in accordance with the 2015 International Residential Code sections R502.11.1 and R802.10.2 and referenced standard ANSI/TPI 1.
- 11) Graphical purlin representation does not depict the size or the orientation of the purlin along the top and/or bottom chord.

LOAD CASE(S) Standard



August 15, 2024

WARNING - Verify design parameters and READ NOTES ON THIS AND INCLUDED MITEK REFERENCE PAGE MII-7473 rev. 1/2/2023 BEFORE USE.

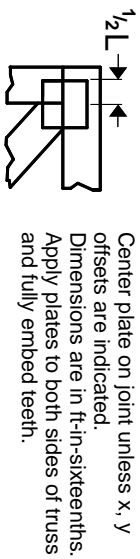
Design valid for use only with MiTek® connectors. This design is based only upon parameters shown, and is for an individual building component, not a truss system. Before use, the building designer must verify the applicability of design parameters and properly incorporate this design into the overall building design. Bracing indicated is to prevent buckling of individual truss web and/or chord members only. Additional temporary and permanent bracing is always required for stability and to prevent collapse with possible personal injury and property damage. For general guidance regarding the fabrication, storage, delivery, erection and bracing of trusses and truss systems, see **ANSI/TPI Quality Criteria and DSB-22** available from Truss Plate Institute (www.tpinst.org) and **BCSI Building Component Safety Information** available from the Structural Building Component Association (www.sbcacomponents.com)

ENGINEERING BY
TRENCO
A MiTek Affiliate

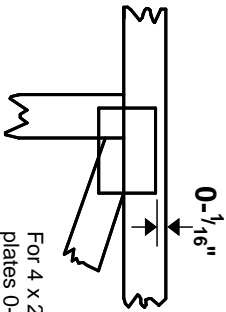
818 Soundside Road
Edenton, NC 27932

Symbols

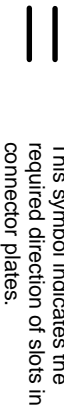
PLATE LOCATION AND ORIENTATION



Center plate on joint unless x, y offsets are indicated. Dimensions are in ft-in-sixteenths. Apply plates to both sides of truss and fully embed teeth.



For 4 x 2 orientation, locate plates 0- 1/16" from outside edge of truss.



This symbol indicates the required direction of slots in connector plates.

* Plate location details available in MITek software or upon request.

PLATE SIZE

4 X 4

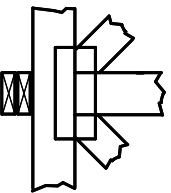
The first dimension is the plate width measured perpendicular to slots. Second dimension is the length parallel to slots.

LATERAL BRACING LOCATION



Indicated by symbol shown and/or by text in the bracing section of the output. Use T or I bracing if indicated.

BEARING



Indicates location where bearings (supports) occur. Icons vary but reaction section indicates joint number/letter where bearings occur. Min size shown is for crushing only.

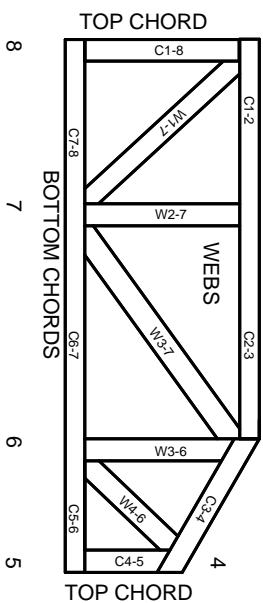
Industry Standards:

ANSI/TP1: National Design Specification for Metal Plate Connected Wood Truss Construction.
DSB-22: Design Standard for Bracing.
BCSI: Building Component Safety Information, Guide to Good Practice for Handling, Installing, Restraining & Bracing of Metal Plate Connected Wood Trusses.

Numbering System



1 TOP CHORDS
2 Joint ID
3 typ.



JOINTS ARE GENERALLY NUMBERED/LETTERED CLOCKWISE AROUND THE TRUSS STARTING AT THE JOINT FARTHEST TO THE LEFT.

CHORDS AND WEBS ARE IDENTIFIED BY END JOINT NUMBERS/LETTERS.

Product Code Approvals

ICC-ES Reports:

ESR-1988, ESR-2362, ESR-2685, ESR-3282
ESR-4722, ESL-1388

Design General Notes

Trusses are designed for wind loads in the plane of the truss unless otherwise shown.

Lumber design values are in accordance with ANSI/TP1 section 6.3. These truss designs rely on Lumber values established by others.

© 2023 MITek® All Rights Reserved

MITek

ENGINEERING BY
TRENGO
A MITek Affiliate

MITek Engineering Reference Sheet: MIL-7473 rev. 1/2/2023

General Safety Notes

Failure to Follow Could Cause Property Damage or Personal Injury

1. Additional stability/bracing for truss system, e.g. diagonal or X-bracing, is always required. See BCSI.
2. Truss bracing must be designed by an engineer. For wide truss spacing, individual lateral braces themselves may require bracing, or alternative Tor I bracing should be considered.
3. Never exceed the design loading shown and never stack materials on inadequately braced trusses.
4. Provide copies of this truss design to the building designer, erection supervisor, property owner and all other interested parties.
5. Cut members to bear tightly against each other.
6. Place plates on each face of truss at each joint and embed fully. Knots and wane at joint locations are regulated by ANSI/TP1 1.
7. Design assumes trusses will be suitably protected from the environment in accord with ANSI/TP1 1.
8. Unless otherwise noted, moisture content of lumber shall not exceed 19% at time of fabrication.
9. Unless expressly noted, this design is not applicable for use with fire retardant, preservative treated, or green lumber.
10. Camber is a non-structural consideration and is the responsibility of truss fabricator. General practice is to camber for dead load deflection.
11. Plate type, size, orientation and location dimensions indicated are minimum plating requirements.
12. Lumber used shall be of the species and size, and in all respects, equal to or better than that specified.
13. Top chords must be sheathed or purlins provided at spacing indicated on design.
14. Bottom chords require lateral bracing at 10 ft. spacing, or less, if no ceiling is installed, unless otherwise noted.
15. Connections not shown are the responsibility of others.
16. Do not cut or alter truss member or plate without prior approval of an engineer.
17. Install and load vertically unless indicated otherwise.
18. Use of green or treated lumber may pose unacceptable environmental, health or performance risks. Consult with project engineer before use.
19. Review all portions of this design (front, back, words and pictures) before use. Reviewing pictures alone is not sufficient.
20. Design assumes manufacture in accordance with ANSI/TP1 1 Quality Criteria.
21. The design does not take into account any dynamic or other loads other than those expressly stated.