

Products				
PlotID	Length	Product	Plies	Net Qty
BM-1	24' 0"	1-3/4" x 9-1/2" VERSA-LAM® 2.0 3100 SP	2	2
BM-2	10' 0"	1-3/4" x 9-1/2" VERSA-LAM® 2.0 3100 SP	2	2
BM-3	8' 0"	1-3/4" x 9-1/2" VERSA-LAM® 2.0 3100 SP	2	4
BM-4	22' 0"	1-3/4" x 16" VERSA-LAM® 2.0 3100 SP	2	2

Truss Connector Total List		
Manuf	Product	Qty
Simpson	HTU26	2

Extreme care must be taken to not set any of these trusses backwards.

▲ = LEFT END OF TRUSS

REVISIONS:



Moncks Corner/Easley, SC (800) 475-3999  
Sparta, NC (336) 372-2226

FOR PERMIT

Client: **MATTAMY HOMES-RALEIGH**  
 Job: **LOT 15 PROVIDENCE CREEK**  
 Plan Information: **GLADES-CR**

ROOF

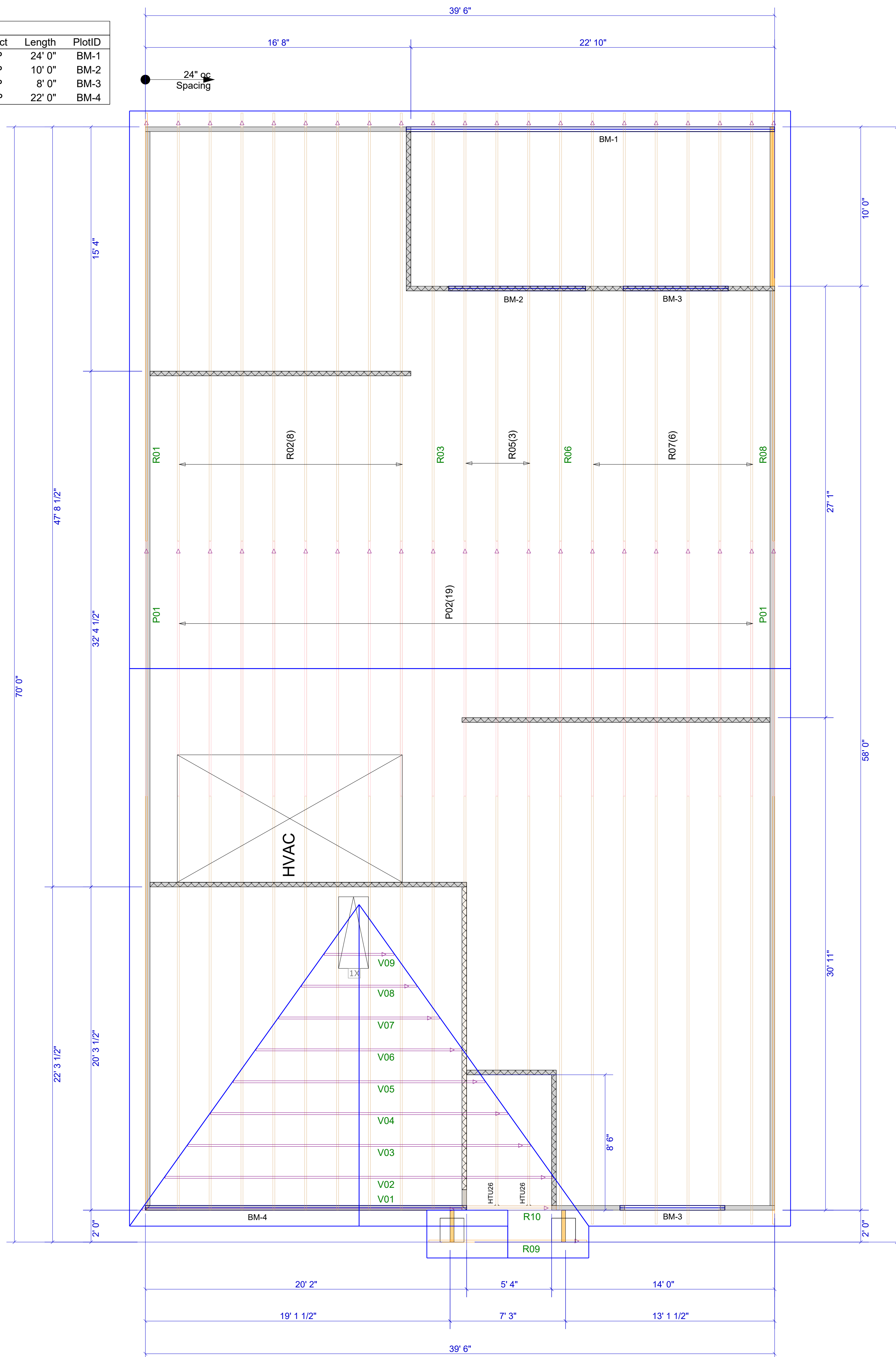
NOT TO SCALE  
 Drawn By: **MBB**  
 Date: 01/17/24  
 Job #: **24-0468-R01**  
 Sales Rep: **KYLE GIBSON**  
 Phone:

**WARNING!** Long span trusses, 60' or greater in length, require extreme care and experience for proper and safe handling and installation. For general handling and installation guidance, see the "Guide to Good Practice for Handling, Installing, Restraining & Bracing of Metal Plate Connected Wood Trusses ("BCSI"), JOINTLY PRODUCED BY SBCA and TPI. For project specific guidance, consult with a registered design professional. ATLANTIC assumes no responsibility for the handling, installation or bracing of trusses.

Products					
Net Qty	Plies	Product	Length	PlotID	
2	2	1-3/4" x 9-1/2" VERSA-LAM® 2.0 3100 SP	24' 0"	BM-1	
2	2	1-3/4" x 9-1/2" VERSA-LAM® 2.0 3100 SP	10' 0"	BM-2	
4	2	1-3/4" x 9-1/2" VERSA-LAM® 2.0 3100 SP	8' 0"	BM-3	
2	2	1-3/4" x 16" VERSA-LAM® 2.0 3100 SP	22' 0"	BM-4	

Truss Connector Total List		
Qty	Product	Manuf
2	HTU26	Simpson

Extreme care must be taken to not set any of these trusses backwards.



▲ = LEFT END OF TRUSS

REVISIONS:



Moncks Corner/Easley, SC (800) 475-3999  
Sparta, NC (336) 372-2226

FOR PERMIT

Client: MATTAMY HOMES-RALEIGH

Job: LOT 15 PROVIDENCE CREEK

Plan Information:  
GLADES-CR

NOT TO SCALE

Drawn By: MBB

Date: 01/17/24

Job #: 24-0468-R01

Sales Rep: KYLE GIBSON  
Phone:

ROOF

**WARNING!** Long span trusses, 60' or greater in length, require extreme care and experience for proper and safe handling and installation. For general handling and installation guidance, see the "Guide to Good Practice for Handling, Installing, Restraining & Bracing of Metal Plate Connected Wood Trusses ("BCSI"), JOINTLY PRODUCED BY SBCA and TPI. For project specific guidance, consult with a registered design professional. ATLANTIC assumes no responsibility for the handling, installation or bracing of trusses.