

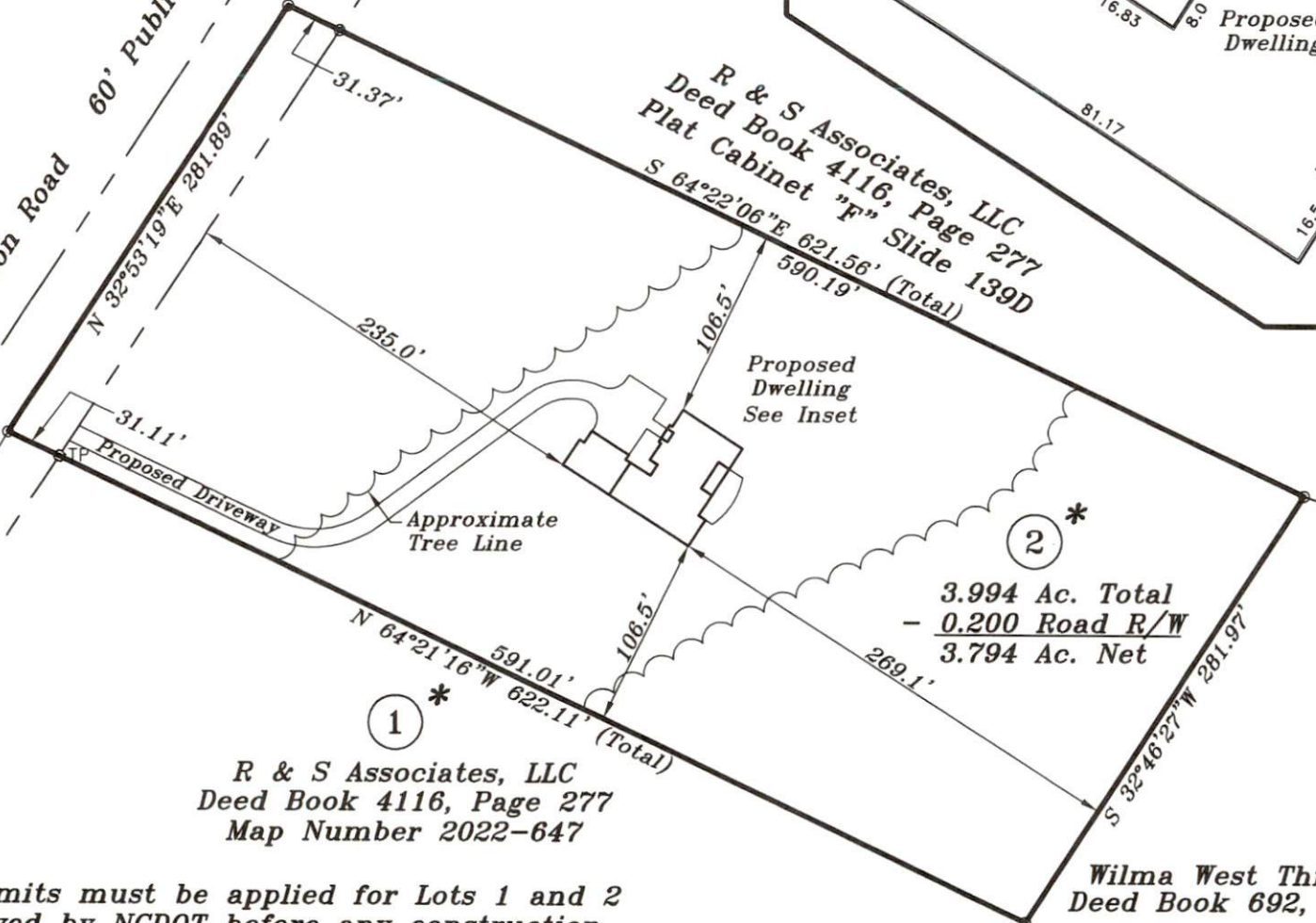


Magnetic North
Plat Cabinet F, Slide 139D

Approximate location of
4" county waterline based
Harnett County GIS
NOT FIELD VERIFIED

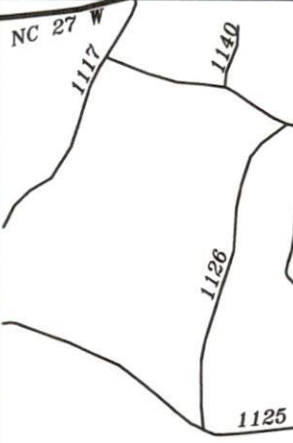
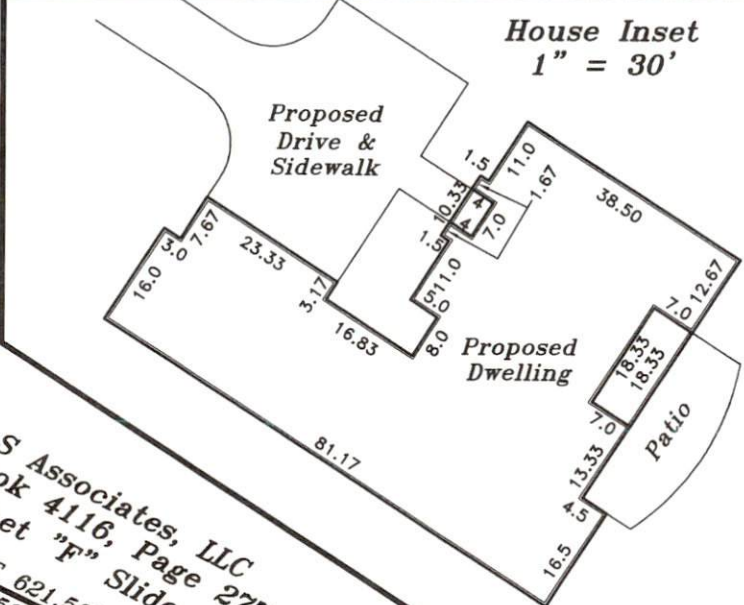
SR 1130
Norrington Road
60' Public R/W

2415' ± to C/L Intersection
SR 1130 and SR 1128



R & S Associates, LLC
Deed Book 4116, Page 277
Map Number 2022-647

Wilma West Thibodeaux
Deed Book 692, Page 598
Estate File 92-E-417
Map Number 2002-519



VICINITY
Norrington Road
Lillington, NC
Map Number 0537
PIN: 0537

Owned by and
R & S Associates, LLC
C/O Lucretia
919-639-2133

Upper Little River
Scale: 1" = 100'

Surveyed by
STANCIL & ASSOCIATES
Professional Land Surveyors
P.O. Box 730,
919-639-2133



*** Note**
Driveway permits must be applied for Lots 1 and 2
and approved by NCDOT before any construction.
Driveways must be spaced a minimum of 200' apart
for individual driveways. The distance is measured
from radius to radius.

NOT FOR