

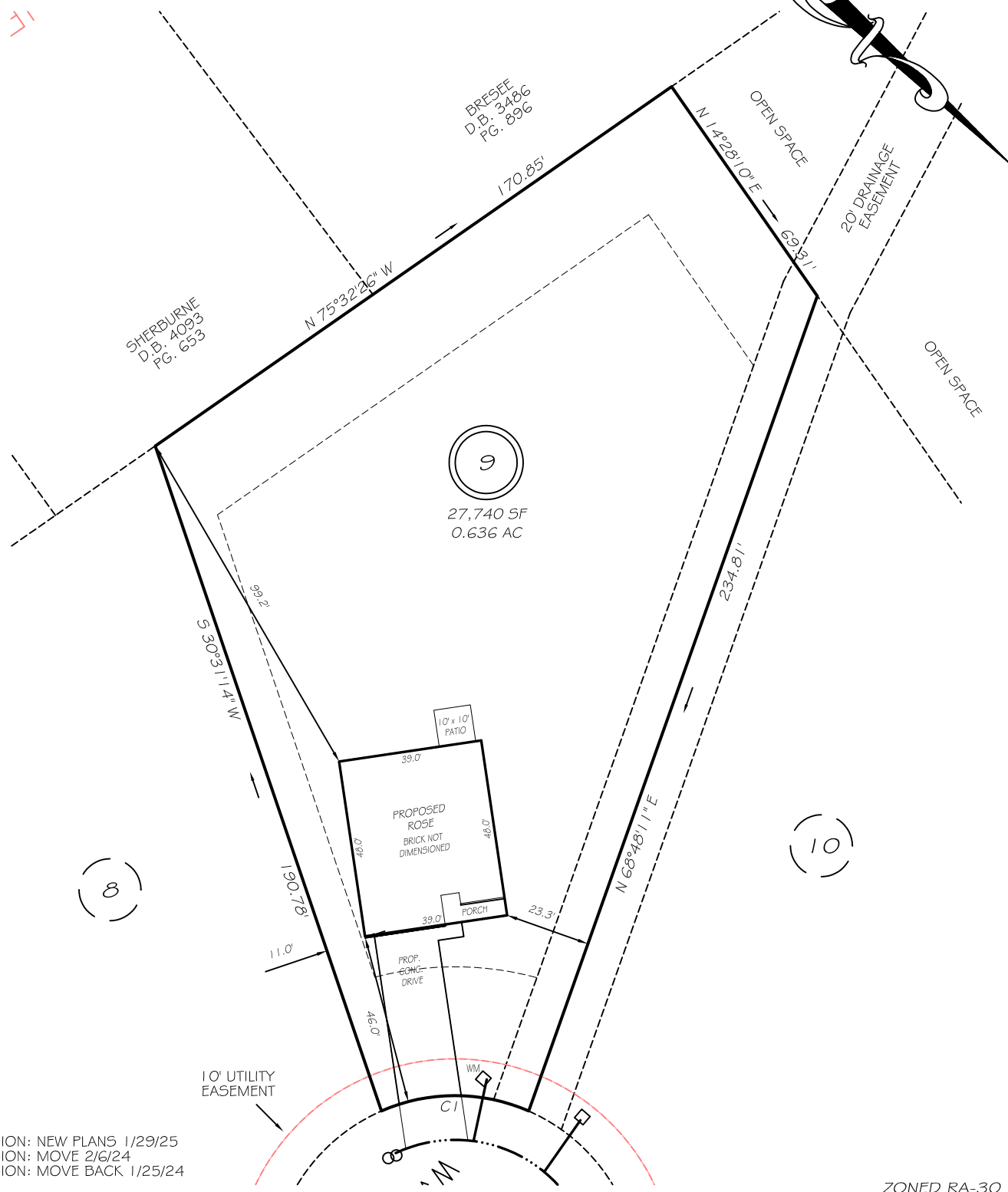
I, MICHAEL P. GRIFFIN, certify that under my direction and supervision this map was drawn from an actual field survey; that the error of closure of the survey as calculated by coordinates is 1: 10,000+; that the area shown hereon was calculated by coordinates. Dashed lines shown hereon were not surveyed.

Witness my hand and seal this day of MONTH 2024.

40' 20' 0' 40'

GRAPHIC SCALE
1"=40'

BK 2023 P.65 266-267
HARNETT CO. REGISTRY



REVISION: NEW PLANS 1/29/25
REVISION: MOVE 2/6/24
REVISION: MOVE BACK 1/25/24

IMPERVIOUS AREAS

HOUSE	1881 SQ. FT.
DRIVE & WALKS	803 SQ. FT.
PATIO	100 SQ. FT.
TOTAL	2784 SQ. FT.
ALLOWED	9932 SQ. FT.

CI R=50.00' L=41.15' N40°41'56"W 40.00'

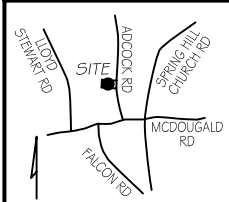
JONES CREEK LANE
50' PUBLIC RW & UTILITY EASEMENT

ZONED RA-30 SETBACKS

FRONT	35'
REAR	25'
SIDE	10'
CORNER SIDE	20'

LEGEND

EIP	EXISTING IRON PIPE	FES	FLARED END SECTION
IPS	IRON PIPE SET	WM	WATER METER
RAW	RIGHT OF WAY	CO	CLEAN OUT
N/F	NOW OR FORMERLY	FH	FIRE HYDRANT
EIS	EXISTING IRON STAKE	CB	CATCH BASIN



PRELIMINARY
NOT FOR RECORDATION,
SALES OR CONVEYANCE



GRIFFIN LAND SURVEYING, INC.

P.O. BOX 148
FUQUAY-VARINA, NC 27526
(919) - 567 - 1963

FIRM LIC.# C-1345

PLOT PLAN FOR

A & G RESIDENTIAL

JONES CREEK MEADOWS

LOT 9

JONES CREEK LANE
FOUR OAKS, N.C.

HARNETT COUNTY UPPER LITTLE RIVER TOWNSHIP

DRAWN BY **KDF**

DATE **1/24/24**

CHECKED BY **MPG**

SCALE **1" = 40'**