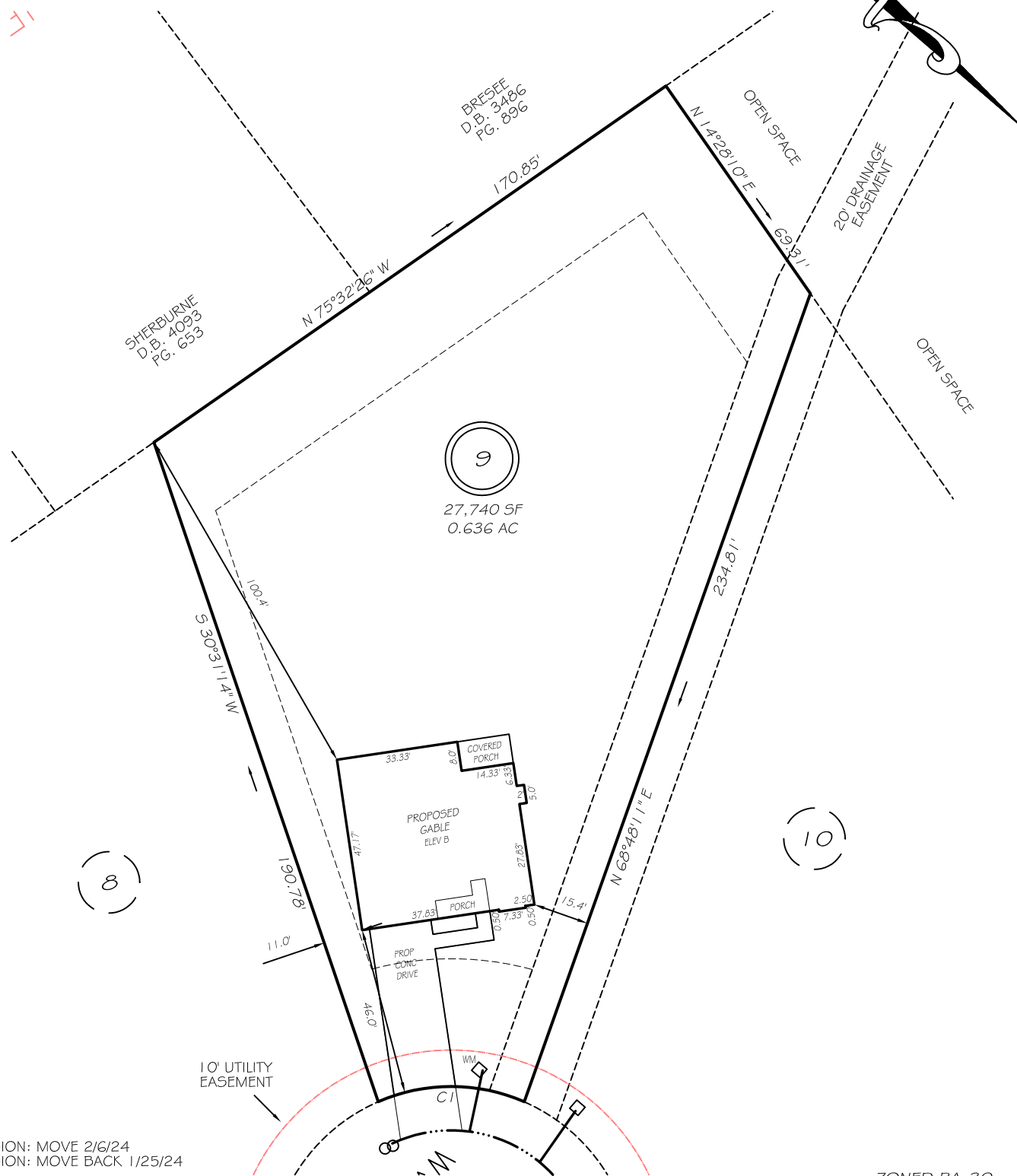


I, MICHAEL P. GRIFFIN, certify that under my direction and supervision this map was drawn from an actual field survey; that the error of closure of the survey as calculated by coordinates is 1: 10,000+; that the area shown hereon was calculated by coordinates.

Witness my hand and seal this day of MONTH 2024.

BK 2023 PGS 266-267
HARNETT CO. REGISTRY



9
27,740 SF
0.636 AC

8

10

REVISION: MOVE 2/6/24
REVISION: MOVE BACK 1/25/24

IMPERVIOUS AREAS

HOUSE	2262 SQ. FT.
DRIVE & WALKS	1099 SQ. FT.
PATIO	0 SQ. FT.
TOTAL	3361 SQ. FT.
ALLOWED	9932 SQ. FT.

CI R=50.00' L=41.15' N40°41'56\"/>

JONES CREEK LANE
50' PUBLIC RW & UTILITY EASEMENT

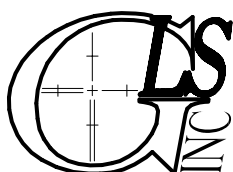
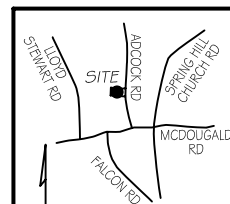
ZONED RA-30 SETBACKS

FRONT	35'
REAR	25'
SIDE	10'
CORNER SIDE	20'

PRELIMINARY
NOT FOR RECORDATION,
SALES OR CONVEYANCE

LEGEND

EIP	EXISTING IRON PIPE	FES	FLARED END SECTION
IPS	IRON PIPE SET	WM	WATER METER
RAW	RIGHT OF WAY	CO	CLEAN OUT
N/F	NOW OR FORMERLY	FH	FIRE HYDRANT
EIS	EXISTING IRON STAKE	CB	CATCH BASIN



GRIFFIN LAND SURVEYING, INC.

P.O. BOX 148
FUQUAY-VARINA, NC 27526
(919) - 567 - 1963

PLOT PLAN FOR

A & G RESIDENTIAL

JONES CREEK MEADOWS

LOT 9

JONES CREEK LANE
FOUR OAKS, N.C.

HARNETT COUNTY UPPER LITTLE RIVER TOWNSHIP

DRAWN BY **KDF**

DATE **1/24/24**

CHECKED BY **MPG**

SCALE **1" = 40'**