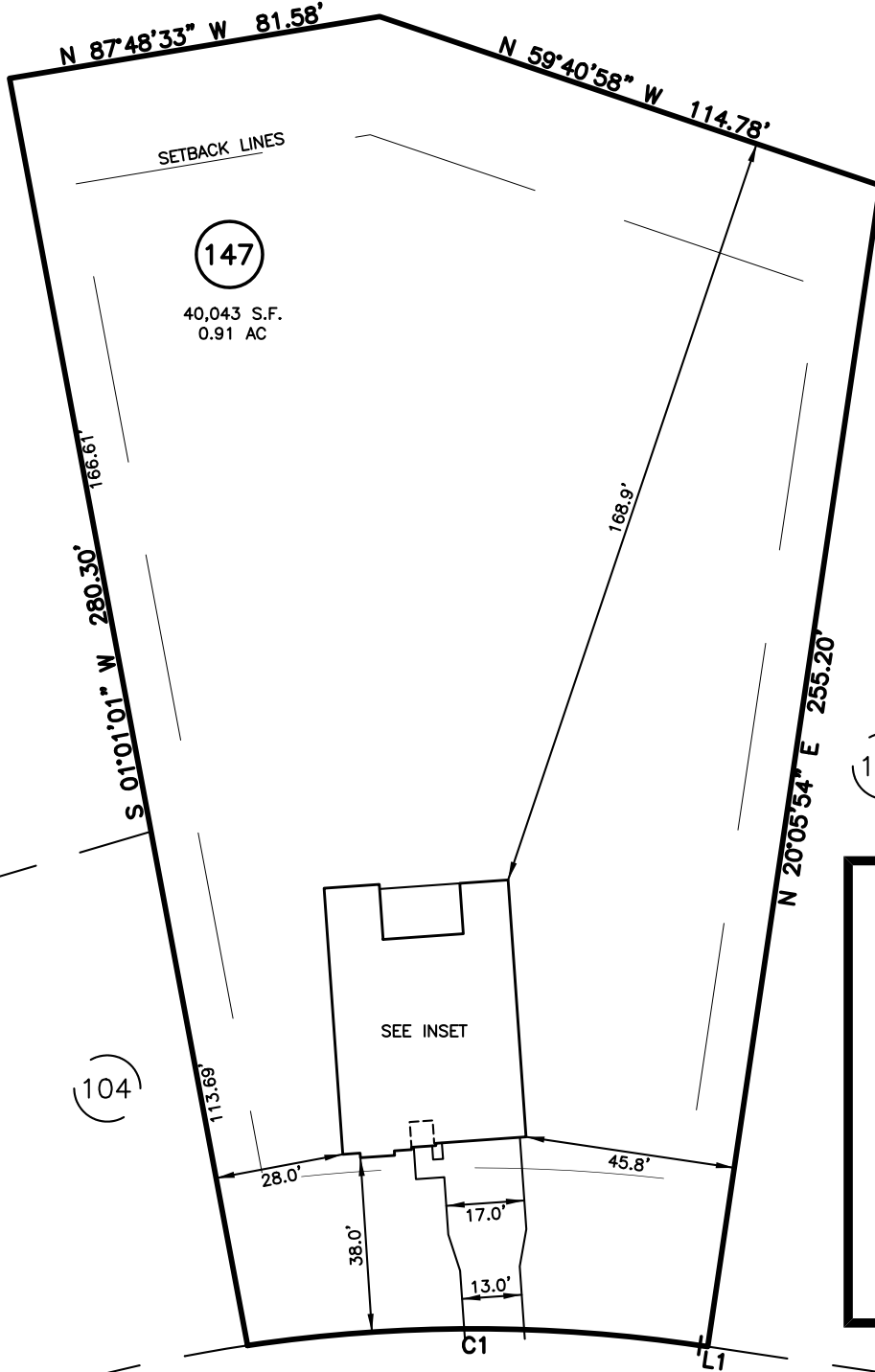
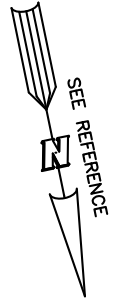


PLOT PLAN FOR
NEW HOME, INC. LLC
 668 DUNCAN CREEK ROAD
 LOT 147, DUNCAN'S CREEK PHASE 1
 UPPER LITTLE CREEK TOWNSHIP, HARNETT COUNTY, NORTH CAROLINA

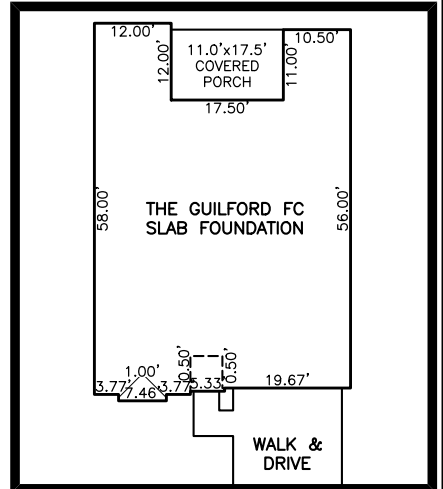
FUTURE PHASE 2 DEVELOPMENT



LEGEND

- ⊠ AIR CONDITIONER
- BC BACK OF CURB
- BFP BACK FLOW PREVENTER
- CLEANOUT
- ⊠ CURB INLET
- DHS DRILL HOLE SET
- ECM EXISTING CONCRETE MONUMENT
- EDH EXISTING DRILL HOLE
- EIS EXISTING IRON STAKE
- EIP EXISTING IRON PIPE
- EM ELECTRIC METER
- EPK EXISTING PK NAIL
- ES ELECTRIC STUB
- ⊠ FLARED END SECTION
- ⊠ FIRE HYDRANT
- ⊠ FIBER OPTIC PEDESTAL
- ⊠ GAS METER
- GUY
- INV INVERT
- IPS IRON PIPE SET
- IRS IRON ROD SET
- LIGHT POLE
- MNS MAGNETIC NAIL SET
- ⊠ MANHOLE SANITARY SEWER
- ⊠ MANHOLE STORM SEWER
- OHW OVERHEAD WIRES
- PKS PK NAIL SET
- PNS POINT NOT SET
- RRS RAIL ROAD SPIKE
- ⊠ TELEPHONE PEDESTAL
- ⊠ TRANSFORMER
- ⊠ CABLE TV PEDESTAL
- UTILITY POLE
- ⊠ WATER METER
- ⊠ WATER VALVE
- ⊠ YARD INLET
- () FIELD MEASUREMENT

(148)



INSET SCALE: 1"=30'

DUNCAN CREEK ROAD
 50' PUBLIC R/W

LINE	BEARING	DISTANCE
L1	S69°54'06"E	1.72'

NUM	RADIUS	ARC	DELTA	CHORD BRG	CHORD
C1	335.00'	98.65'	16°52'23"	S78°20'17"E	98.30'

IMPERVIOUS SURFACES	S.F.
HOUSE	2,090
WALK & DRIVE	670
PORCH	200
TOTAL	2,960
PERCENT IMPERVIOUS	7.4%

SETBACK INFO

- FRONT: _____ 35'
- REAR: _____ 25'
- SIDES: _____ 10'
- CORNER SIDE: _____ 20'

REFERENCES:

P.B. 2022, PGS 594-596



SCALE: 1" = 40'

NOTES

1. THIS SURVEY SUBJECT TO ANY FACTS THAT MAY BE DISCLOSED BY A FULL AND ACCURATE TITLE SEARCH.
2. THIS MAP MAY NOT BE A CERTIFIED SURVEY AND HAS NOT BEEN REVIEWED BY A LOCAL GOVERNMENT AGENCY FOR COMPLIANCE WITH ANY APPLICABLE LAND DEVELOPMENT REGULATIONS AND HAS NOT BEEN REVIEWED FOR COMPLIANCE WITH RECORDING REQUIREMENTS FOR PLATS.

PLOT PLAN
 PRELIMINARY PLAT- NOT FOR RECORDATION,
 CONVEYANCE OR SALES

REV CODE: 1.FLIP, 2.PLAN, 3.ROTATE, 4.MOVE, 5.SS
 6.SEVERAL OF ABOVE, 7.LAND FEATURE, 8. OTHER

REV2: MAR. 01, 2024(8)
 REV1: MAR. 01, 2024(1)
 DATE: FEB. 27, 2024

F.B. _____

RWK, PA

ENGINEERING ~ SURVEYING

CORPORATE LICENSE: C-1771
 101 W. MAIN ST., SUITE 202
 GARNER, NC 27529
 PHONE (919) 779-4854
 FAX (919) 779-4056