

**THIS LAYOUT IS INTENDED FOR THE PURPOSE OF TRUSS LOCATION AND PLACEMENT ONLY. REFER TO THE BUILDING PLANS FOR ACTUAL BUILDING CONSTRUCTION.**

PROJECT: **LOT 162 BIRCHWOOD GROVE**

CUSTOMER: **KB HOME**

MODEL: **240-3174 - ELEVATION A - 10X20 SCREEN PORCH - GL**

SCALE: **N.T.S**

DRAWN BY: **Mike Bolt**

PRINT DATE: **1/3/2024**

QUOTE #: **07615**

TOP LIVE LOAD: 20

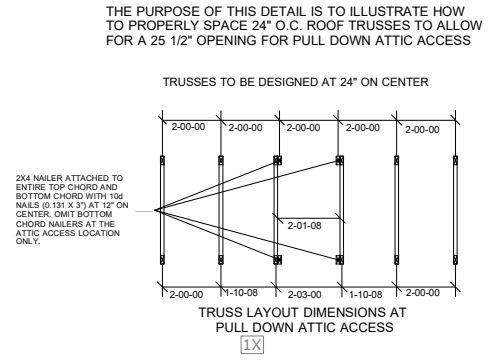
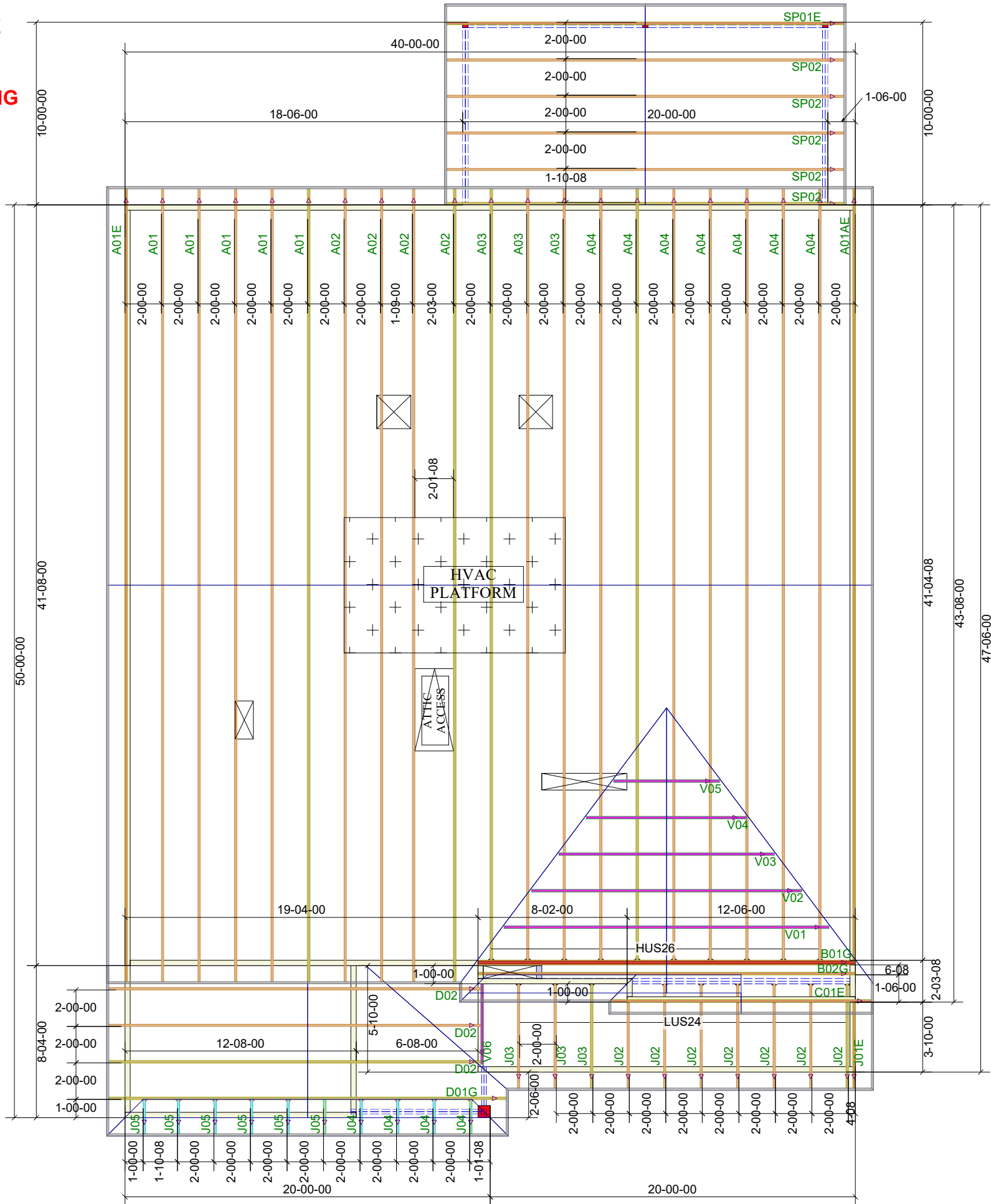
TOP DEAD LOAD: 10

BOTTOM DEAD LOAD: 10

WIND SPEED: 130

GENERAL NOTES:

- DO NOT CUT OR MODIFY TRUSSES
- TRUSSES ARE SPACED 24" ON CENTER UNLESS OTHERWISE NOTED
- REFER TO THE INDIVIDUAL TRUSS DESIGN DRAWINGS FOR THE LOCATION OF LATERAL BRACING AND MULTI-PLY CONNECTION REQUIREMENTS.
- PER ANSII TPI 1-2002 THE TRUSS ENGINEER IS RESPONSIBLE FOR TRUSS TO TRUSS CONNECTIONS AND TRUSS PLY TO PLY CONNECTIONS. THIS TRUSS CONNECTION PLAN RECOMMENDS TRUSS TO BEARING CONNECTIONS AND TRUSS TO BEAM CONNECTIONS WHICH SHALL BE REVIEWED BY THE BUILDING DESIGNER. IT IS THE RESPONSIBILITY OF THE BUILDING DESIGNER TO RESOLVE ALL ROOF FORCES ADEQUATELY TO THE FOUNDATION.



Truss Connector Total List		
Qty	Product	Manuf
10	HUS26	Simpson

Truss Connector Total List		
Qty	Product	Manuf
10	LUS24	Simpson

**FRAMER NOTE:**  
 - TRUSSES J01E AND J02 CREATE THE FLOOR SYSTEM ABOVE AND HANG INTO LVL BEAM IN THE FLOOR SYSTEM.

