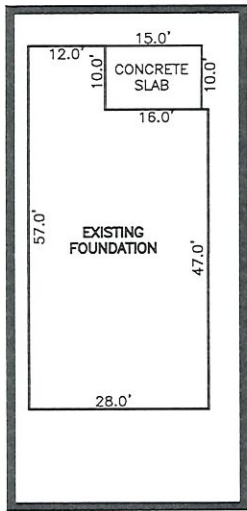
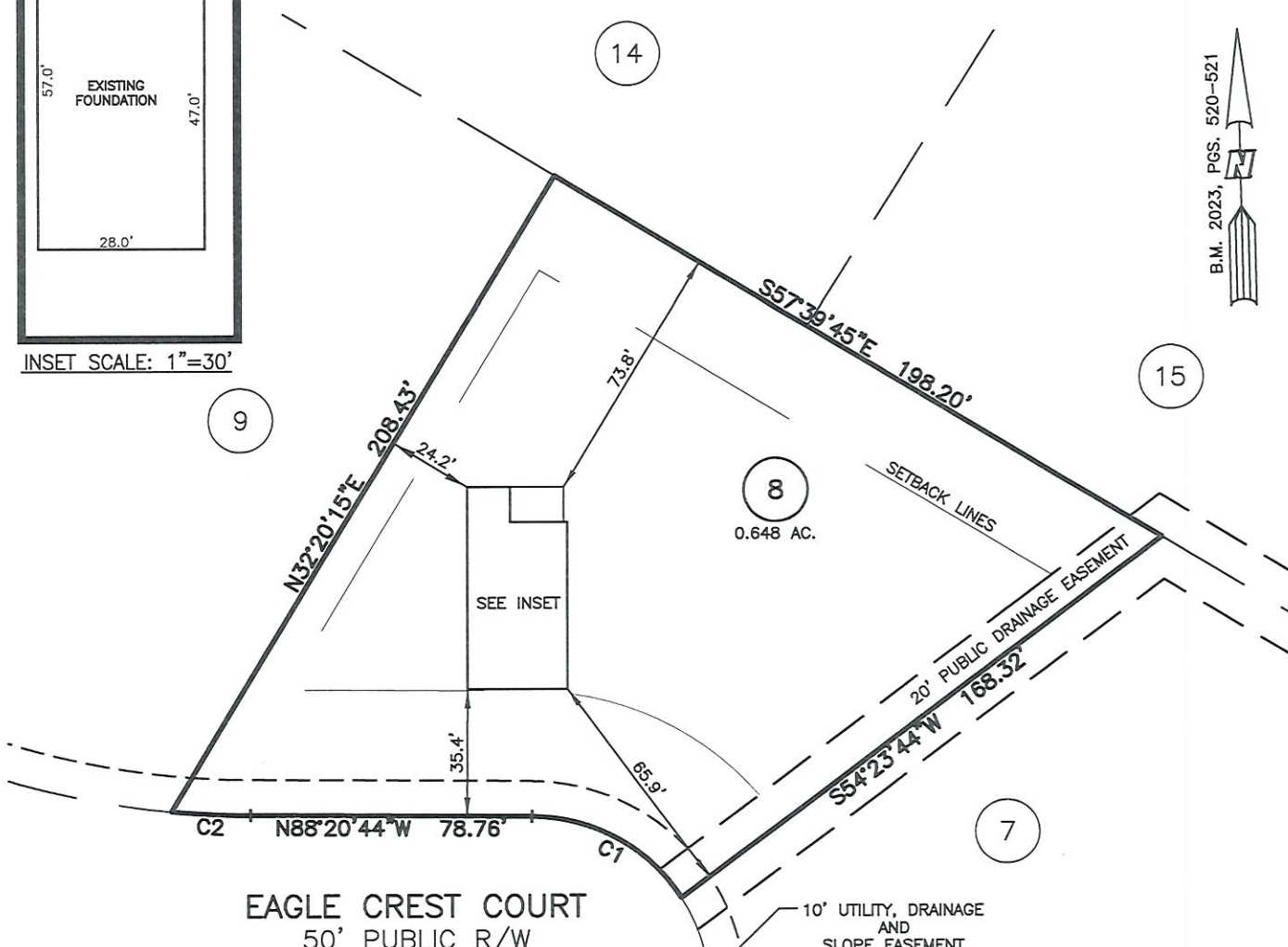
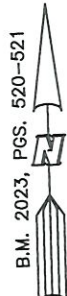


AS-BUILT IMPROVEMENTS FOR  
**NEW HOME, INC.**  
 113 EAGLE CREST COURT  
 LOT 08, HERITAGE AT NEILL'S CREEK SUBDIVISION  
 NEILL'S CREEK TOWNSHIP, HARNETT COUNTY, NORTH CAROLINA



INSET SCALE: 1"=30'



EAGLE CREST COURT  
 50' PUBLIC R/W

NUM	RADIUS	ARC	DELTA	CHORD BRG	CHORD
C1	50.00'	49.80'	57°03'57"	N59°48'45"W	47.77'
C2	250.00'	22.15'	5°04'34"	N85°48'27"W	22.14'

SETBACK INFO

FRONT: 35'  
 REAR: 25'  
 SIDES: 10'  
 CORNER SIDE: 20'

LEGEND

- |   |  |
|---|--|
| <ul style="list-style-type: none"> <li>△ AIR CONDITIONER</li> <li>BC BACK OF CURB</li> <li>BFP BACK FLOW PREVENTER</li> <li>○ CLEANOUT</li> <li>▢ CURB INLET</li> <li>DHS DRILL HOLE SET</li> <li>EDM EXISTING CONCRETE MONUMENT</li> <li>EDH EXISTING DRILL HOLE</li> <li>EIS EXISTING IRON STAKE</li> <li>EIP EXISTING IRON PIPE</li> <li>EM ELECTRIC METER</li> <li>EPK EXISTING PK NAIL</li> <li>ES ELECTRIC STUB</li> <li>FLA FLARED END SECTION</li> <li>FHY FIRE HYDRANT</li> <li>FOP FIBER OPTIC PEDESTAL</li> <li>GM GAS METER</li> <li>→ GUY</li> </ul> | <ul style="list-style-type: none"> <li>INV. INVERT</li> <li>IPS IRON PIPE SET</li> <li>IRS IRON ROD SET</li> <li>☒ LIGHT POLE</li> <li>MNS MAGNETIC NAIL SET</li> <li>⊗ MANHOLE SANITARY SEWER</li> <li>⊗ MANHOLE STORM SEWER</li> <li>OHW OVERHEAD WIRES</li> <li>PKS PK NAIL SET</li> <li>PNS POINT NOT SET</li> <li>RRS RAIL ROAD SPIKE</li> <li>TEL TELEPHONE PEDESTAL</li> <li>TRF TRANSFORMER</li> <li>CTV CABLE TV PEDESTAL</li> <li>UTL UTILITY POLE</li> <li>WMT WATER METER</li> <li>WTV WATER VALVE</li> <li>YIN YARD INLET</li> <li>( ) FIELD MEASUREMENT</li> </ul> |
|---|--|

THIS AS-BUILT IS  
 FOR CODE COMPLIANCE.  
 NOT FOR SALES OR  
 CONVEYANCE

WAKE COUNTY, NORTH CAROLINA

I CERTIFY THAT THIS MAP WAS DRAWN UNDER MY SUPERVISION FROM FIELDWORK DONE UNDER MY SUPERVISION; THAT THE IMPROVEMENTS LIE WHOLLY UPON THE LOT AND THAT THE PROPERTY SHOWN IS AN EXISTING PARCEL OR PARCELS OF LAND.

*Charles R. Piratzky*

CHARLES R. PIRATZKY, P.L.S.  
 L-2813

*9-23-24*

DATE



REFERENCES:

B.M. 2023, PGS. 520-521



SCALE: 1" = 50'

NOTES

- THIS SURVEY SUBJECT TO ANY FACTS THAT MAY BE DISCLOSED BY A FULL AND ACCURATE TITLE SEARCH.
- THIS MAP MAY NOT BE A CERTIFIED SURVEY AND HAS NOT BEEN REVIEWED BY A LOCAL GOVERNMENT AGENCY FOR COMPLIANCE WITH ANY APPLICABLE LAND DEVELOPMENT REGULATIONS AND HAS NOT BEEN REVIEWED FOR COMPLIANCE WITH RECORDING REQUIREMENTS FOR PLATS.

DATE: SEP. 14, 2024

Q:\FieldLoc\HNC8FDN.txt

**RWK, PA**  
 ENGINEERING ~ SURVEYING  
 CORPORATE LICENSE: C-1771  
 101 W. MAIN ST., SUITE 202  
 GARNER, NC 27529  
 PHONE (919) 779-4854  
 FAX (919) 779-4056