

Truss Connector Total List		
Manuf	Product	Qty
Simpson	HTU26	11
Simpson	LUS26	4

Products				
PlotID	Length	Product	Plies	Net Qty
BM-1	8' 0"	1-3/4" x 9-1/2" VERSA-LAM® 2.0 3100 SP	2	4

▲ = LEFT END OF TRUSS

REVISIONS:

FOR PERMIT

Client: **MATTAMY HOMES-RALEIGH**
 Job: **LOT 60 PROVIDENCE CREEK**
 Plan Information:
SHENANDOAH-FH

ROOF

NOT TO SCALE
 Drawn By: MBB
 Date: 01/11/24
 Job #: 24-0288-R01
 Sales Rep: KYLE GIBSON
 Phone:

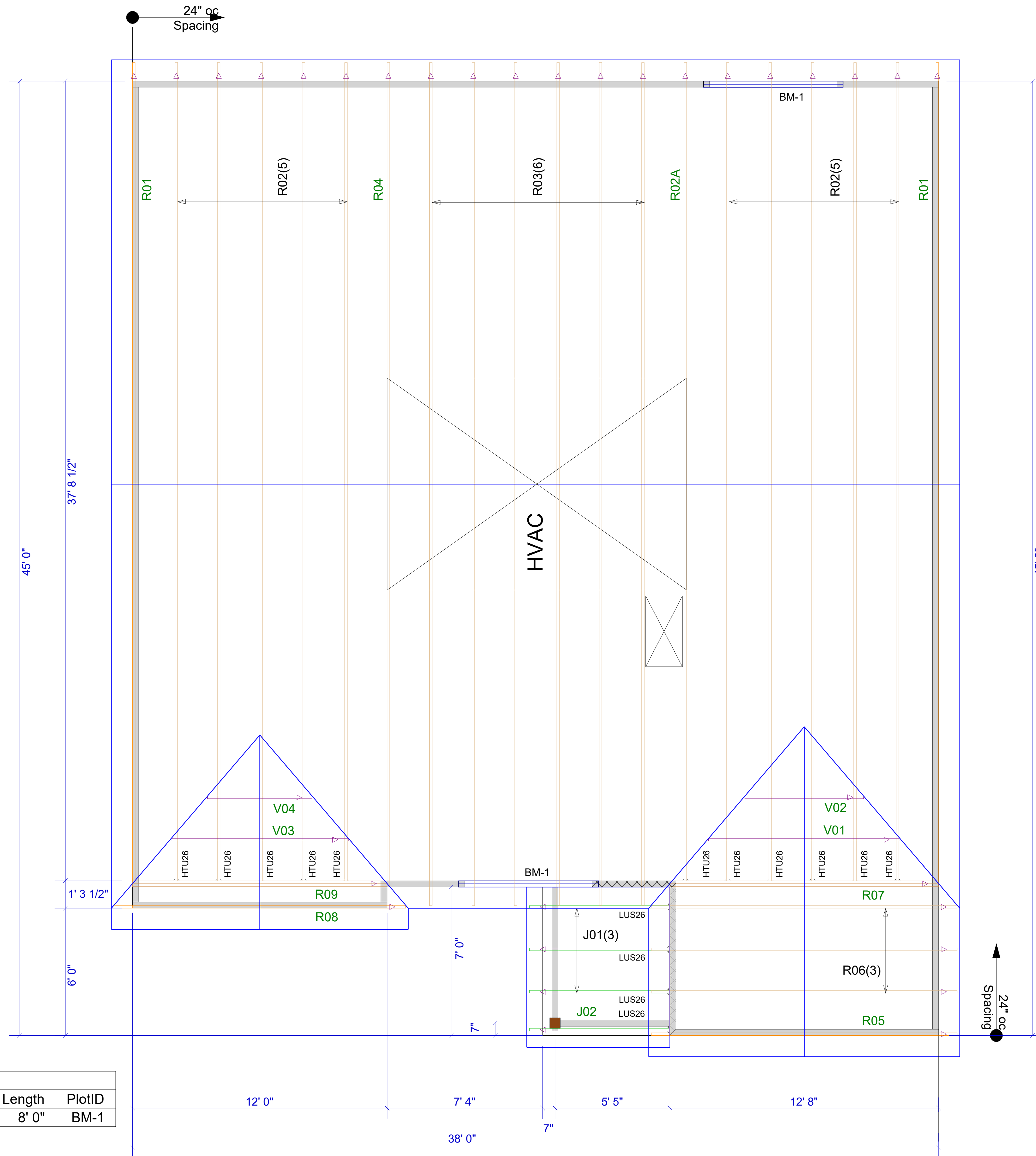


Moncks Corner/Easley, SC (800) 475-3999
 Sparta, NC (336) 372-2226

WARNING! Long span trusses, 60' or greater in length, require extreme care and experience for proper and safe handling and installation. For general handling and installation guidance, see the "Guide to Good Practice for Handling, Installing, Restraining & Bracing of Metal Plate Connected Wood Trusses ("BCSI"), JOINTLY PRODUCED BY SBCA and TPI. For project specific guidance, consult with a registered design professional. ATLANTIC assumes no responsibility for the handling, installation or bracing of trusses.

Net Qty	Plies	Product	Length	PlotID
4	2	1-3/4" x 9-1/2" VERSA-LAM® 2.0 3100 SP	8' 0"	BM-1

Truss Connector Total List		
Qty	Product	Manuf
11	HTU26	Simpson
4	LUS26	Simpson



▲ = LEFT END OF TRUSS

REVISIONS:



Moncks Corner/Easley, SC (800) 475-3999
Sparta, NC (336) 372-2226

FOR PERMIT

Client: **MATTAMY HOMES-RALEIGH**
 Job: **LOT 60 PROVIDENCE CREEK**
 Plan Information:
SHENANDOAH-FH

ROOF

NOT TO SCALE
 Drawn By: **MBB**
 Date: 01/11/24
 Job #: **24-0288-R01**
 Sales Rep: **KYLE GIBSON**
 Phone:

WARNING! Long span trusses, 60' or greater in length, require extreme care and experience for proper and safe handling and installation. For general handling and installation guidance, see the "Guide to Good Practice for Handling, Installing, Restraining & Bracing of Metal Plate Connected Wood Trusses ("BCSI"), JOINTLY PRODUCED BY SBCA and TPI. For project specific guidance, consult with a registered design professional. ATLANTIC assumes no responsibility for the handling, installation or bracing of trusses.