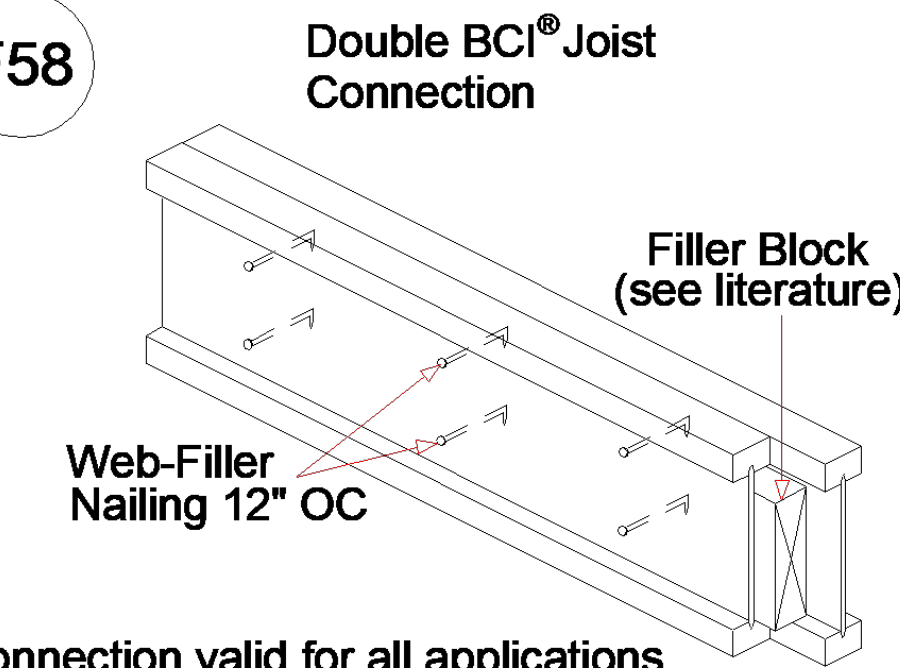


Connector Summary			
Qty	Manuf	Product	Flange
1	Simpson	HHUS410	None
3		HUC3514	None
13	Simpson	IUS2.37/14	None
3	Simpson	MIT3514-2	None

Products				
PlotID	Length	Product	Plies	Net Qty
J2-1	27' 0"	14" BCI® 6000s-1.8	1	3
J2-2	27' 0"	14" BCI® 6000s-1.8	2	4
J2-3	21' 0"	14" BCI® 6000s-1.8	1	5
J2-4	21' 0"	14" BCI® 6000s-1.8	2	2
J2-5	18' 0"	14" BCI® 6000s-1.8	1	31
J2-6	13' 0"	14" BCI® 6000s-1.8	1	4
J2-7	9' 0"	14" BCI® 6000s-1.8	1	2
J2-8	6' 0"	14" BCI® 6000s-1.8	1	8
J2-9	6' 0"	14" BCI® 6000s-1.8	2	2
BM2-1	8' 0"	1-3/4" x 9-1/2" VERSA-LAM® 2.0 3100 SP	2	2
BM2-2	10' 0"	1-3/4" x 11-7/8" VERSA-LAM® 2.0 3100 SP	2	2
BM2-3	10' 0"	1-3/4" x 14" VERSA-LAM® 2.0 3100 SP	2	2
BM2-4	8' 0"	1-3/4" x 14" VERSA-LAM® 2.0 3100 SP	2	2
BM2-5	22' 0"	1-3/4" x 18" VERSA-LAM® 2.0 3100 SP	3	3
Rim1	12' 0"	1-1/8" x 14" BC RIM BOARD OSB	1	17
Blk1	2' 0"	14" BLOCKING	1	36

Connect all 2-ply joists in the field per detail F58.

F58



**FOR PERMIT**

Client: **MATTAMY HOMES-RALEIGH**  
 Job: **LOT 60 PROVIDENCE CREEK**  
 Plan Information: **SHENANDOAH-FH**

NOT TO SCALE  
 Date: 02/13/24  
 Job #: 24-0288-J02  
 Sales Rep: KYLE GIBSON  
 Drawn By: MBB  
 Phone: 843-729-3249

▲ = LEFT END OF TRUSS

REVISIONS:

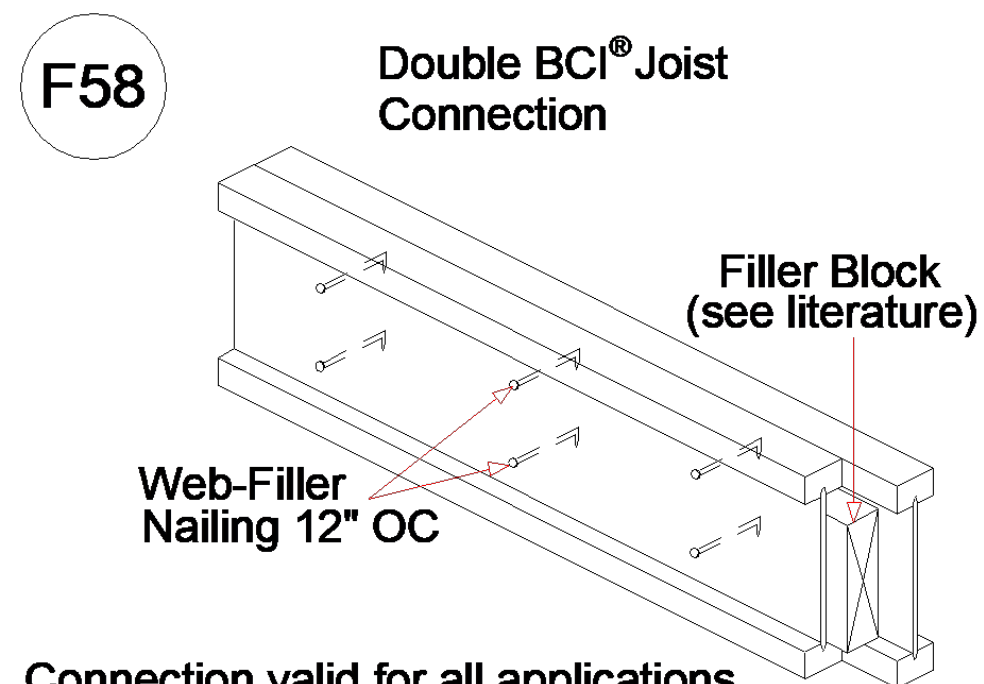


Moncks Corner/Easley, SC (800) 475-3999  
 Sparta, NC (336) 372-2226

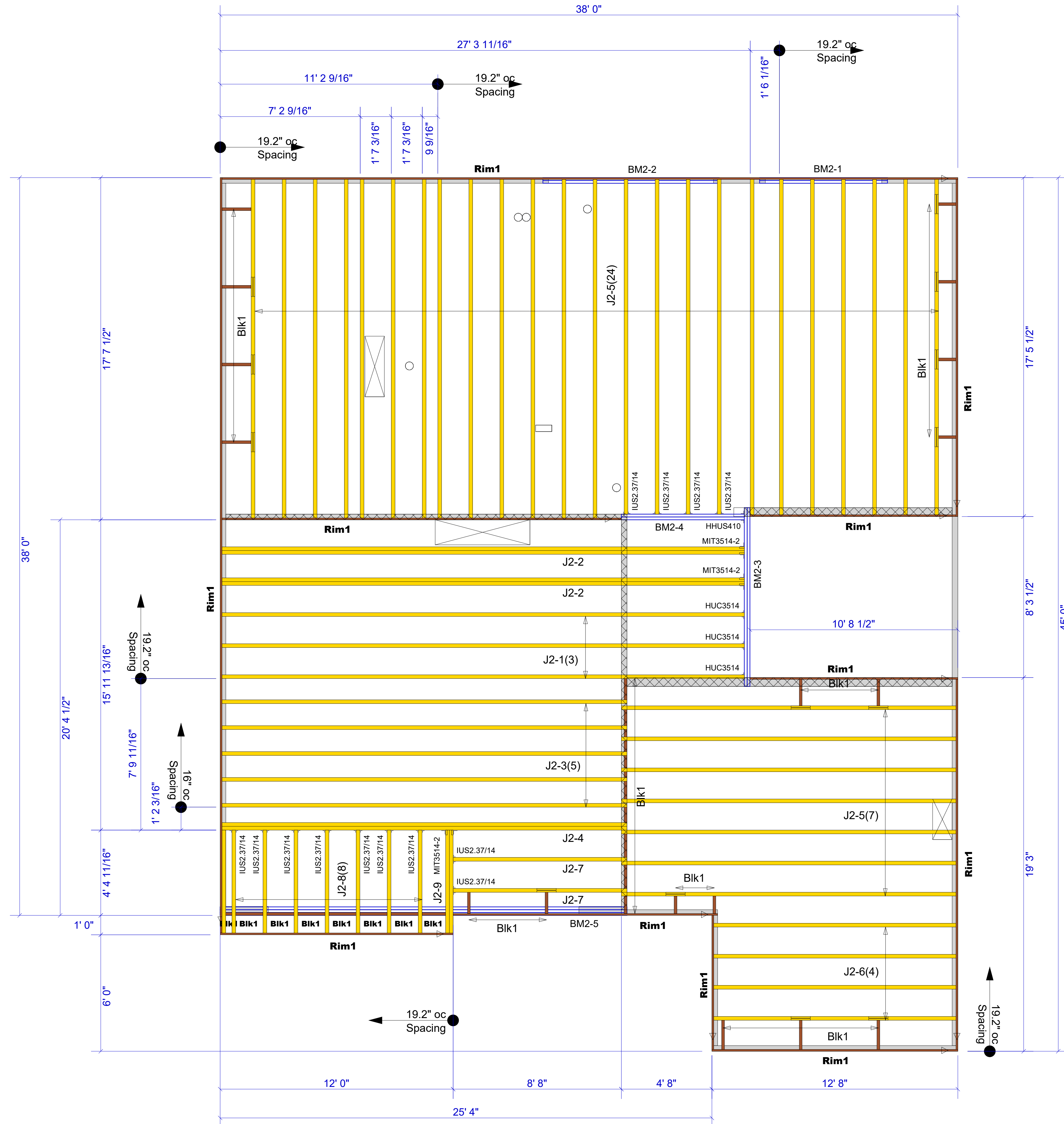
Connector Summary			
Flange	Product	Manuf	Qty
None	HHUS410	Simpson	1
None	HUC3514		3
None	IUS2.37/14	Simpson	13
None	MIT3514-2	Simpson	3

Products				
Net Qty	Plies	Product	Length	PlotID
3	1	14" BCI® 6000s-1.8	27' 0"	J2-1
4	2	14" BCI® 6000s-1.8	27' 0"	J2-2
5	1	14" BCI® 6000s-1.8	21' 0"	J2-3
2	2	14" BCI® 6000s-1.8	21' 0"	J2-4
31	1	14" BCI® 6000s-1.8	18' 0"	J2-5
4	1	14" BCI® 6000s-1.8	13' 0"	J2-6
2	1	14" BCI® 6000s-1.8	9' 0"	J2-7
8	1	14" BCI® 6000s-1.8	6' 0"	J2-8
2	2	14" BCI® 6000s-1.8	6' 0"	J2-9
2	2	1-3/4" x 9-1/2" VERSA-LAM® 2.0 3100 SP	8' 0"	BM2-1
2	2	1-3/4" x 11-7/8" VERSA-LAM® 2.0 3100 SP	10' 0"	BM2-2
2	2	1-3/4" x 14" VERSA-LAM® 2.0 3100 SP	10' 0"	BM2-3
2	2	1-3/4" x 14" VERSA-LAM® 2.0 3100 SP	8' 0"	BM2-4
3	3	1-3/4" x 18" VERSA-LAM® 2.0 3100 SP	22' 0"	BM2-5
17	1	1-1/8" x 14" BC RIM BOARD OSB	12' 0"	Rim1
36	1	14" BLOCKING	2' 0"	Blk1

Connect all 2-ply joists in the field per detail F58.



Connection valid for all applications.  
Contact Boise EWP Engineering for specific conditions.



▲ = LEFT END OF TRUSS

REVISIONS:



Moncks Corner/Easley, SC (800) 475-3999  
Sparta, NC (336) 372-2226

FOR PERMIT

Client: **MATTAMY HOMES-RALEIGH**  
Job: **LOT 60 PROVIDENCE CREEK**  
Plan Information: **SHENANDOAH-FH**

I-JOISTS

NOT TO SCALE  
Date: 02/13/24  
Job #: 24-0288-J02  
Sales Rep: KYLE GIBSON  
Phone: 843-729-3249  
Drawn By: MBB