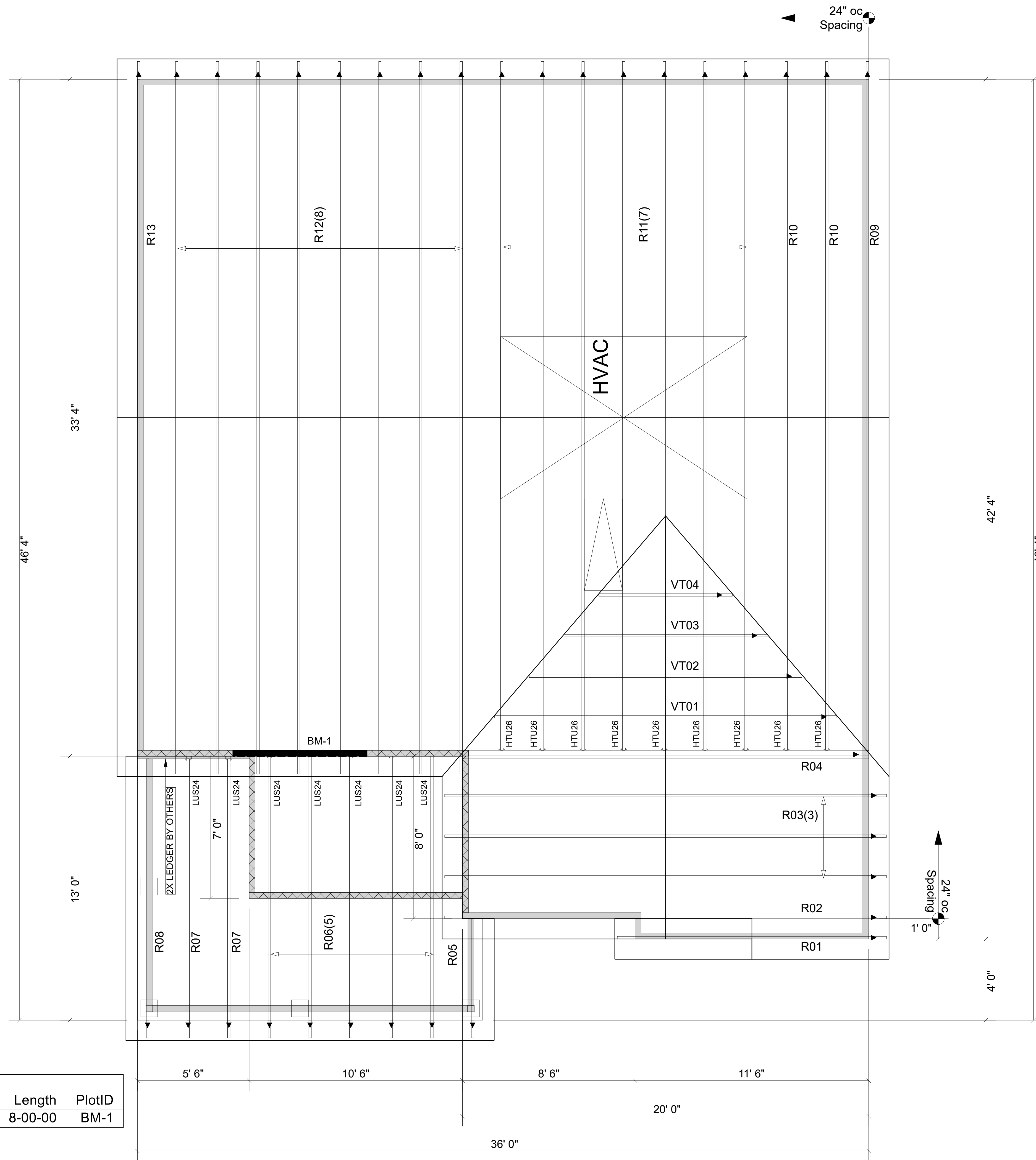


Net Qty	Plies	Product	Length	PlotID
2	2	1-3/4" x 9-1/2" VERSA-LAM® 2.0 3100 SP	8-00-00	BM-1

Qty	Product	Manuf
9	HTU26	
7	LUS24	Simpson



Moncks Corner/Easley, SC (800) 475-3999
Sparta, NC (336) 372-2226

REVISIONS:

▲ = LEFT END OF TRUSS

FOR PERMIT

Client: **MATTAMY HOMES-RALEIGH**
 Job: **LOT 92 PROVIDENCE CREEK**
 Plan Information:
REDWOOD-FH

ROOF

NOT TO SCALE

Drawn By: MBB

Date: 01/10/24

Job #: 24-0267-R01

Sales Rep: KYLE GIBSON
 Phone:

WARNING! Long span trusses, 60' or greater in length, require extreme care and experience for proper and safe handling and installation. For general handling and installation guidance, see the "Guide to Good Practice for Handling, Installing, Restraining & Bracing of Metal Plate Connected Wood Trusses ("BCSI"), JOINTLY PRODUCED BY SBCA and TPI. For project specific guidance, consult with a registered design professional. ATLANTIC assumes no responsibility for the handling, installation or bracing of trusses.