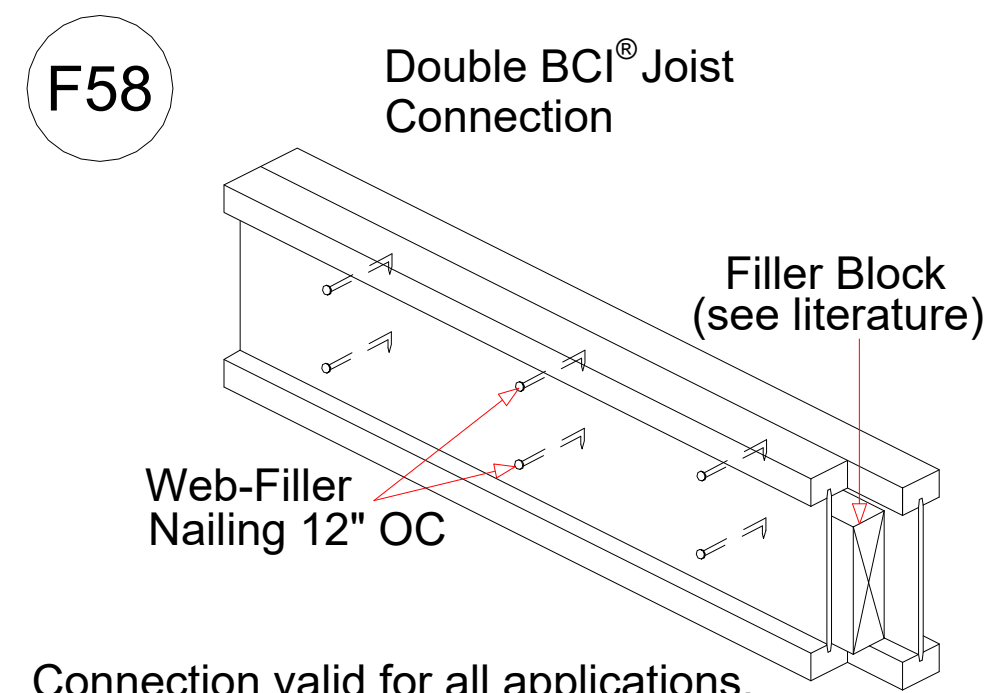
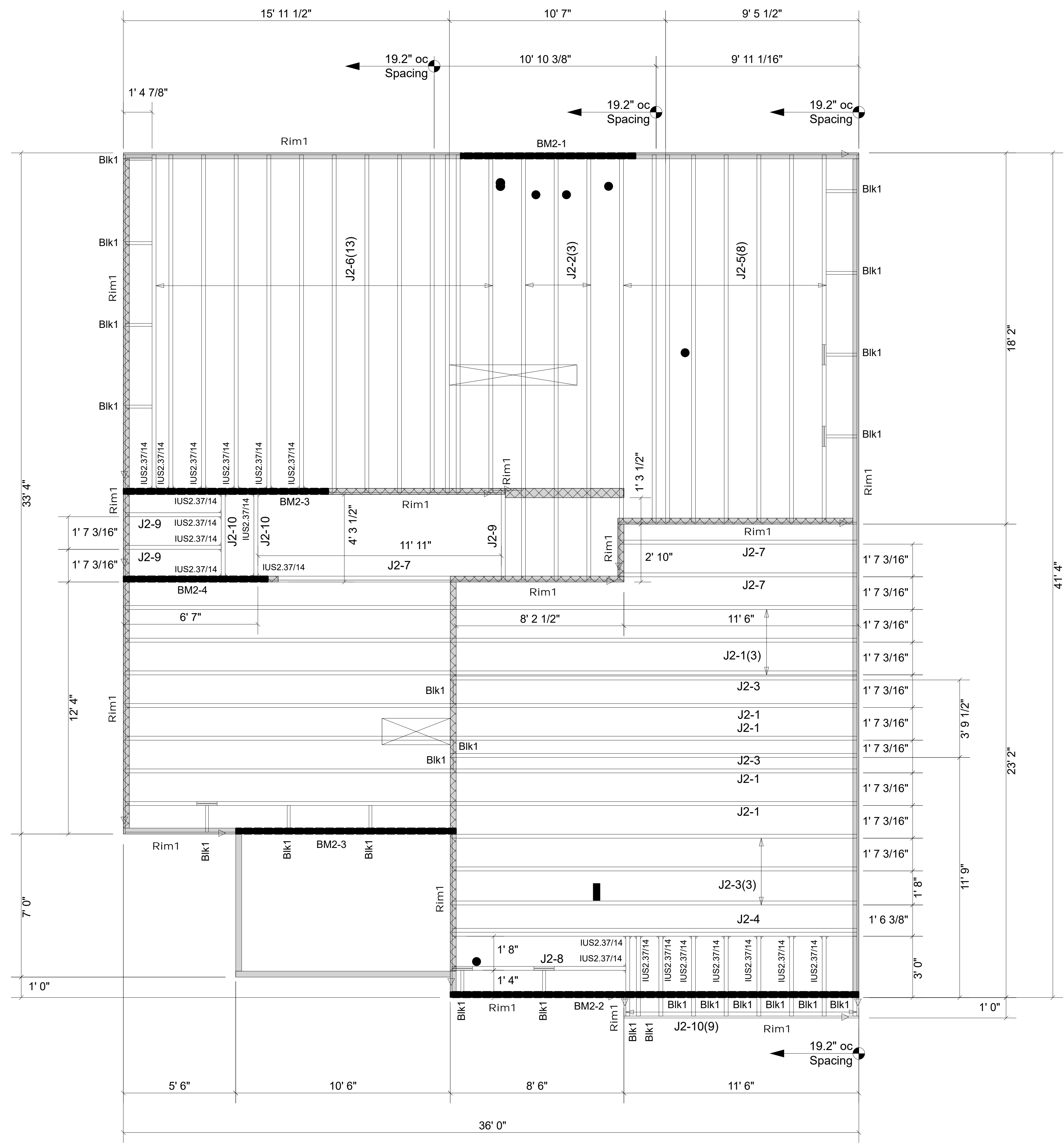


Products				
Net Qty	Plies	Product	Length	PlotID
7	1	14" BCI® 6000s-1.8	36-00-00	J2-1
3	1	14" BCI® 6000s-1.8	21-00-00	J2-2
5	1	14" BCI® 6000s-1.8	20-00-00	J2-3
2	2	14" BCI® 6000s-1.8	20-00-00	J2-4
8	1	14" BCI® 6000s-1.8	18-00-00	J2-5
13	1	14" BCI® 6000s-1.8	17-00-00	J2-6
3	1	14" BCI® 6000s-1.8	12-00-00	J2-7
1	1	14" BCI® 6000s-1.8	9-00-00	J2-8
3	1	14" BCI® 6000s-1.8	5-00-00	J2-9
11	1	14" BCI® 6000s-1.8	4-00-00	J2-10
2	2	1-3/4" x 11-7/8" VERSA-LAM® 2.0 3100 SP	10-00-00	BM2-1
2	2	1-3/4" x 14" VERSA-LAM® 2.0 3100 SP	20-00-00	BM2-2
4	2	1-3/4" x 14" VERSA-LAM® 2.0 3100 SP	12-00-00	BM2-3
2	2	1-3/4" x 14" VERSA-LAM® 2.0 3100 SP	8-00-00	BM2-4
16	1	1-1/8" x 14" BC RIM BOARD OSB	12-00-00	Rim1
24	1	14" BLOCKING	2-00-00	Blk1

Connector Summary			
Flange	Product	Manuf	Qty
None	IUS2.37/14	Simpson	21



Connection valid for all applications.  
Contact Boise EWP Engineering for specific conditions.



**FOR PERMIT**

Client: **MATTAMY HOMES-RALEIGH**

Job: **LOT 92 PROVIDENCE CREEK**

Plan Information: **REDWOOD-FH**

NOT TO SCALE

Date: 01/10/24

Job #: 24-0267-J02

Sales Rep: KYLE GIBSON

Phone: 843-729-3249

▲ = LEFT END OF TRUSS

REVISIONS:



Moncks Corner/Easley, SC (800) 475-3999  
Sparta, NC (336) 372-2226