

| Truss Connector Total List | | |
|----------------------------|---------|-----|
| Manuf | Product | Qty |
| | HTU26 | 9 |
| Simpson | LUS24 | 7 |

| Products | | | | |
|----------|--------|--|-------|---------|
| PlotID | Length | Product | Plies | Net Qty |
| BM-1 | 8' 0" | 1-3/4" x 9-1/2" VERSA-LAM@ 2.0 3100 SP | 2 | 2 |

▲ = LEFT END OF TRUSS

REVISIONS:



Moncks Corner/Easley, SC (800) 475-3999
Sparta, NC (336) 372-2226

FOR PERMIT

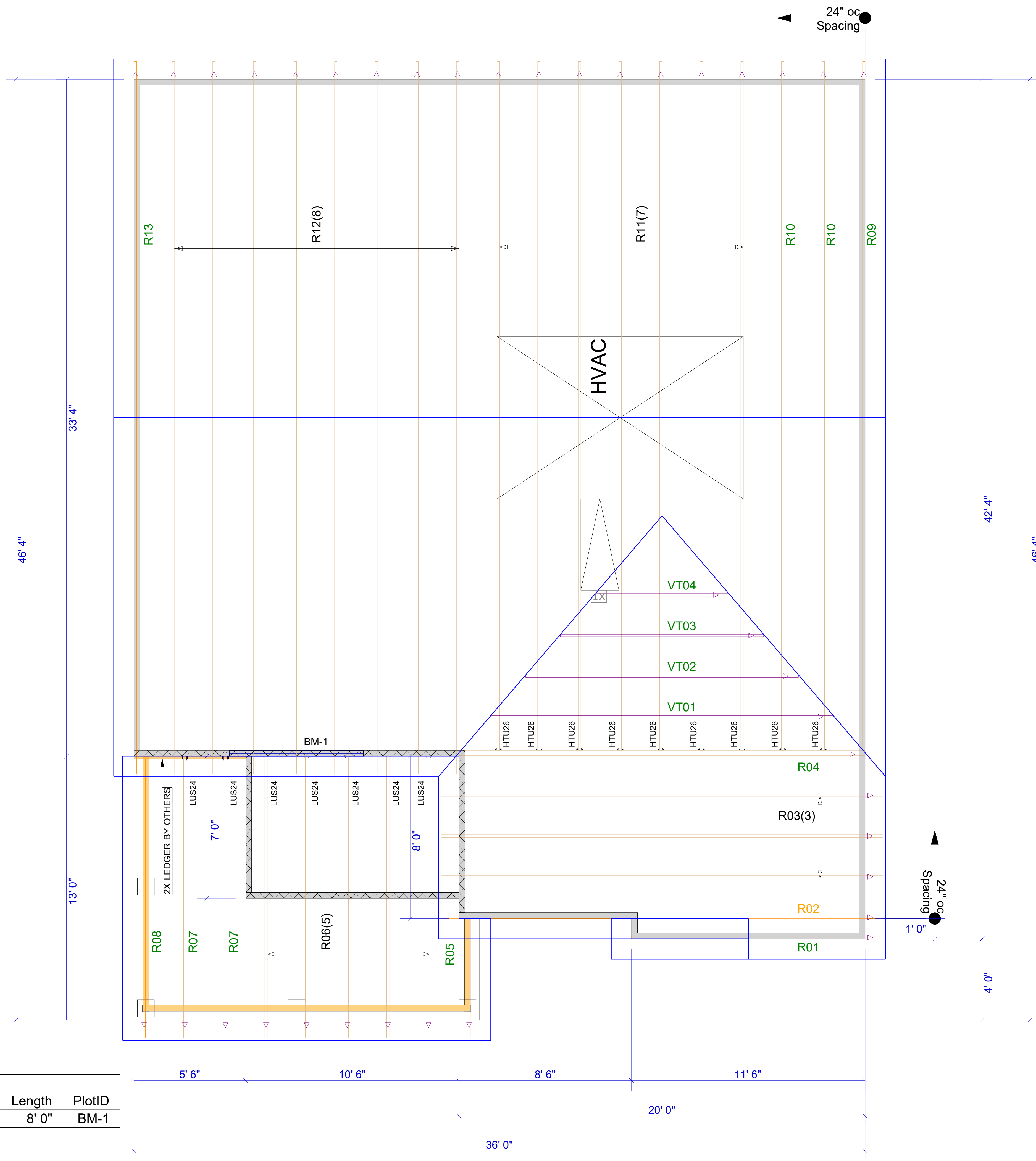
| | |
|-------------------|-------------------------------|
| Client: | MATTAMY HOMES-RALEIGH |
| Job: | LOT 95 PROVIDENCE CREEK |
| Plan Information: | REDWOOD-FH |
| NOT TO SCALE | Date: 01/10/24 |
| Drawn By: MBB | Job #: Sales Rep: KYLE GIBSON |
| | 24-0266-R01 Phone: |

ROOF

WARNING! Long span trusses, 60' or greater in length, require extreme care and experience for proper and safe handling and installation. For general handling and installation guidance, see the "Guide to Good Practice for Handling, Installing, Restraining & Bracing of Metal Plate Connected Wood Trusses ("BCSI"), JOINTLY PRODUCED BY SBCA and TPI. For project specific guidance, consult with a registered design professional. ATLANTIC assumes no responsibility for the handling, installation or bracing of trusses.

| Net Qty | Plies | Product | Length | PlotID |
|---------|-------|--|--------|--------|
| 2 | 2 | 1-3/4" x 9-1/2" VERSA-LAM® 2.0 3100 SP | 8' 0" | BM-1 |

| Truss Connector Total List | | |
|----------------------------|---------|---------|
| Qty | Product | Manuf |
| 9 | HTU26 | |
| 7 | LUS24 | Simpson |



▲ = LEFT END OF TRUSS

FOR PERMIT

Client: **MATTAMY HOMES-RALEIGH**
 Job: **LOT 95 PROVIDENCE CREEK**
 Plan Information:
REDWOOD-FH

NOT TO SCALE
 Drawn By: MBB
 Date: 01/10/24
 Job #: 24-0266-R01
 Sales Rep: KYLE GIBSON
 Phone:

REVISIONS:



Moncks Corner/Easley, SC (800) 475-3999
 Sparta, NC (336) 372-2226

ROOF

WARNING! Long span trusses, 60' or greater in length, require extreme care and experience for proper and safe handling and installation. For general handling and installation guidance, see the "Guide to Good Practice for Handling, Installing, Restraining & Bracing of Metal Plate Connected Wood Trusses ("BCSI"), JOINTLY PRODUCED BY SBCA and TPI. For project specific guidance, consult with a registered design professional. ATLANTIC assumes no responsibility for the handling, installation or bracing of trusses.