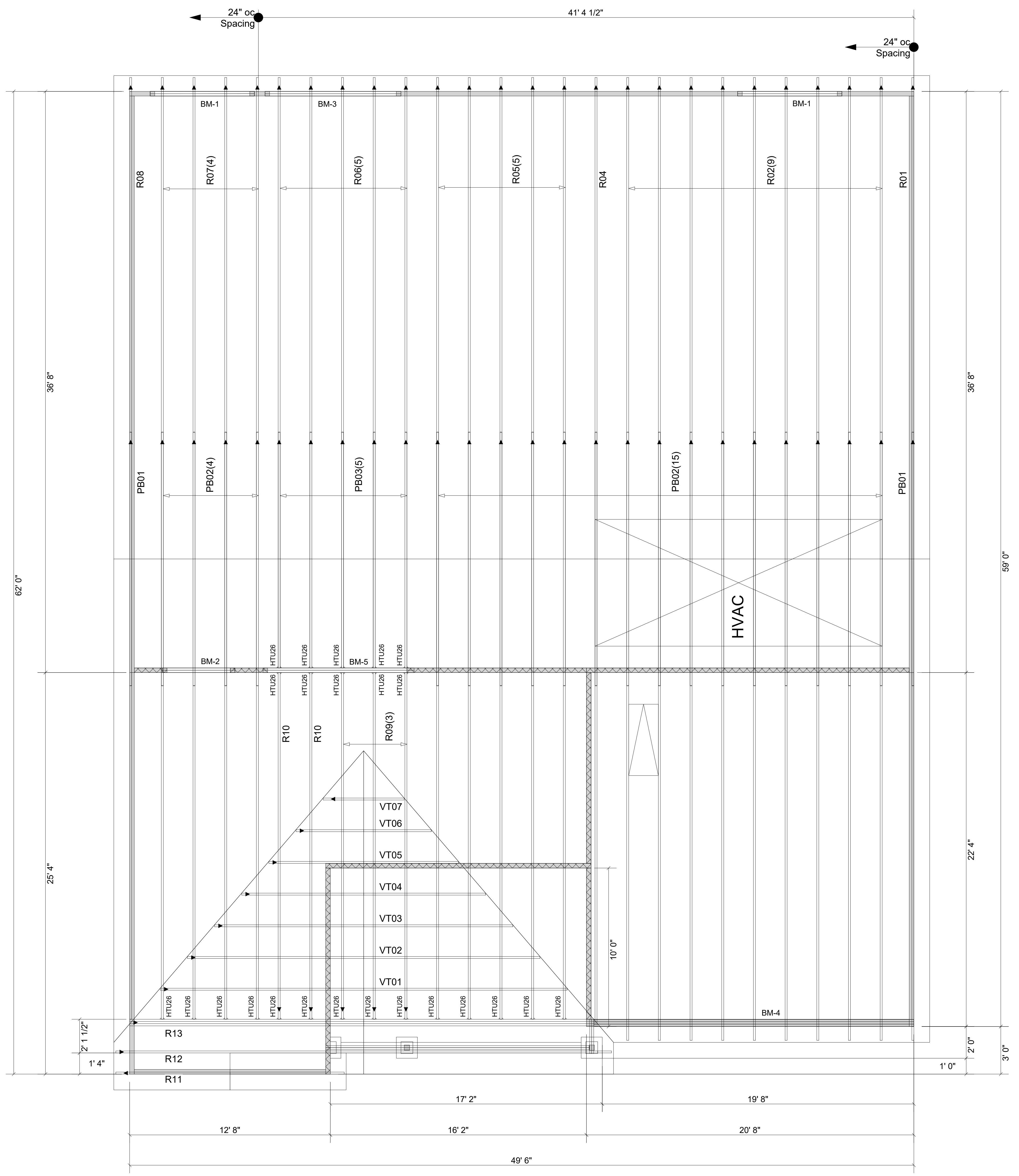


WARNING! Long span trusses, 60' or greater in length, require extreme care and experience for proper and safe handling and installation. For general handling and installation guidance, see the "Guide to Good Practice for Handling, Installing, Restraining & Bracing of Metal Plate Connected Wood Trusses" ("BCS"), "JOINTLY PRODUCED BY SBCA and TPI. For project specific guidance, consult with a registered design professional. ATLANTIC assumes no responsibility for the handling, installation or bracing of trusses.



Truss Connector Total List		
Qty	Product	Manuf
24	HTU26	Simpson

Products					
Net Qty	Plies	Product	Length	PlotID	
4	2	1-3/4" x 9-1/2" VERSA-LAM® 2.0 3100 SP	8' 0"	BM-1	
2	2	1-3/4" x 9-1/2" VERSA-LAM® 2.0 3100 SP	6' 0"	BM-2	
2	2	1-3/4" x 11-7/8" VERSA-LAM® 2.0 3100 SP	10' 0"	BM-3	
3	3	1-3/4" x 14" VERSA-LAM® 2.0 3100 SP	22' 0"	BM-4	
2	2	1-3/4" x 14" VERSA-LAM® 2.0 3100 SP	10' 0"	BM-5	

Extreme care must be taken to not set any of these trusses backwards.

▲ = LEFT END OF TRUSS

FOR PERMIT



Moncks Corner/Easley, SC (800) 475-3999
Sparta, NC (336) 372-2226

REVISIONS:

Client:	MATTAMY HOMES-RALEIGH		
Job:	LOT 90 PROVIDENCE CREEK		
Plan Information:	CLEARWATER-CR		
NOT TO SCALE	Date:	10/29/24	
Drawn By:	MBB	Job #:	24-0270-R01
		Sales Rep:	KYLE GIBSON
		Phone:	

ROOF