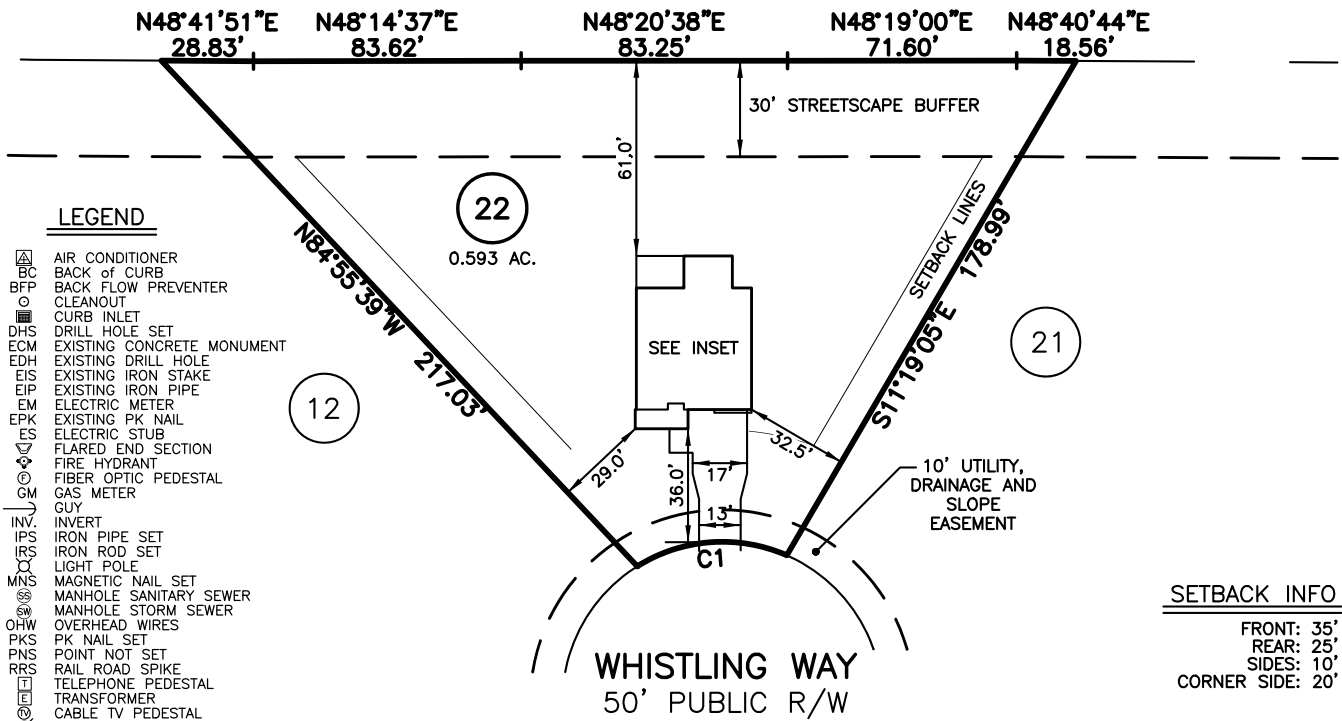
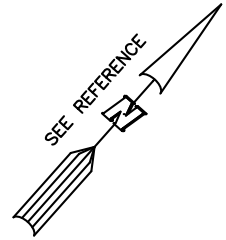


PLOT PLAN FOR
NEW HOME, INC.
 119 WHISTLING WAY
 LOT 22, HERITAGE AT NEILL'S CREEK SUBDIVISION
 NEILL'S CREEK TOWNSHIP, HARNETT COUNTY, NORTH CAROLINA

OLD COATS ROAD
 NCSR 1516
 60' PUBLIC R/W



LEGEND

- ⊠ AIR CONDITIONER
- ⊔ BACK OF CURB
- ⊖ BACK FLOW PREVENTER
- ⊕ CLEANOUT
- ⊠ CURB INLET
- ⊕ DRILL HOLE SET
- ⊠ ECM EXISTING CONCRETE MONUMENT
- ⊕ EDH EXISTING DRILL HOLE
- ⊕ EIS EXISTING IRON STAKE
- ⊕ EIP EXISTING IRON PIPE
- ⊕ EM ELECTRIC METER
- ⊕ EPK EXISTING PK NAIL
- ⊕ ES ELECTRIC STUB
- ⊕ FLARED END SECTION
- ⊕ FIRE HYDRANT
- ⊕ FIBER OPTIC PEDESTAL
- ⊕ GAS METER
- ⊕ GUY
- ⊕ INV INVERT
- ⊕ IPS IRON PIPE SET
- ⊕ IRS IRON ROD SET
- ⊕ LIGHT POLE
- ⊕ MNS MAGNETIC NAIL SET
- ⊕ MANHOLE SANITARY SEWER
- ⊕ MANHOLE STORM SEWER
- ⊕ OHW OVERHEAD WIRES
- ⊕ PK NAIL SET
- ⊕ PK NAIL SET
- ⊕ PMS POINT NOT SET
- ⊕ RRS RAIL ROAD SPIKE
- ⊕ TELEPHONE PEDESTAL
- ⊕ TRANSFORMER
- ⊕ CABLE TV PEDESTAL
- ⊕ UTILITY POLE
- ⊕ WATER METER
- ⊕ WATER VALVE
- ⊕ YARD INLET
- () FIELD MEASUREMENT

SETBACK INFO

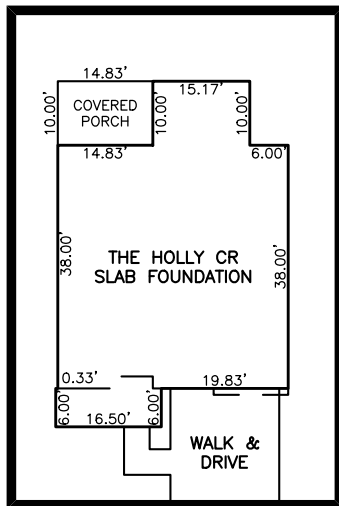
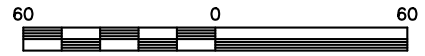
- FRONT: 35'
- REAR: 25'
- SIDES: 10'
- CORNER SIDE: 20'

NUM	RADIUS	ARC	DELTA	CHORD BRG	CHORD
C1	50.00'	48.72'	55°49'24"	S44°08'11"W	46.81'

IMPERVIOUS SURFACES	S.F.
HOUSE	1,620
WALK & DRIVE	680
PORCH	150
TOTAL	2,450
MAX. IMPERVIOUS	7,050

REFERENCES:

B.M. 2023, PGS. 520-521



INSET SCALE: 1"=30'

NOTES

1. THIS SURVEY SUBJECT TO ANY FACTS THAT MAY BE DISCLOSED BY A FULL AND ACCURATE TITLE SEARCH.
2. THIS MAP MAY NOT BE A CERTIFIED SURVEY AND HAS NOT BEEN REVIEWED BY A LOCAL GOVERNMENT AGENCY FOR COMPLIANCE WITH ANY APPLICABLE LAND DEVELOPMENT REGULATIONS AND HAS NOT BEEN REVIEWED FOR COMPLIANCE WITH RECORDING REQUIREMENTS FOR PLATS.

PLOT PLAN
 PRELIMINARY PLAT— NOT FOR RECORDATION,
 CONVEYANCE OR SALES

REV CODE: 1.FLIP, 2.PLAN, 3.ROTATE, 4.MOVE, 5.SS
 6.SEVERAL OF ABOVE, 7.LAND FEATURE, 8. OTHER

REV1: JUNE 11, 2024(8)
 DATE: MAY 30, 2024

F.B. _____

RWK, PA
ENGINEERING ~ SURVEYING
 CORPORATE LICENSE: C-1771
 101 W. MAIN ST., SUITE 202
 GARNER, NC 27529
 PHONE (919) 779-4854
 FAX (919) 779-4056