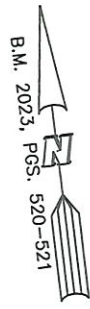


AS-BUILT IMPROVEMENTS FOR  
**NEW HOME, INC.**  
 120 WHISTLING WAY  
 LOT 21, HERITAGE AT NEILL'S CREEK SUBDIVISION  
 NEILL'S CREEK TOWNSHIP, HARNETT COUNTY, NORTH CAROLINA

NUM	RADIUS	ARC	DELTA	CHORD BRG	CHORD
C1	50.00'	41.15'	47°09'20"	N84°22'27"W	40.00'



N\F  
 BEVERLY H. POLLOCK  
 D.B. 4017, PG. 99  
 P.B. 2021, PG. 282

**LEGEND**

- ▲ AIR CONDITIONER
- ▢ BACK OF CURB
- ▢ BFP
- ▢ BACK FLOW PREVENTER
- ▢ CLEANOUT
- ▢ CURB INLET
- ▢ DHS
- ▢ DRILL HOLE SET
- ▢ ECM
- ▢ EXISTING CONCRETE MONUMENT
- ▢ EDH
- ▢ EXISTING DRILL HOLE
- ▢ EIS
- ▢ EXISTING IRON STAKE
- ▢ EIP
- ▢ EXISTING IRON PIPE
- ▢ EM
- ▢ ELECTRIC METER
- ▢ EPK
- ▢ EXISTING PK NAIL
- ▢ ES
- ▢ ELECTRIC STUB
- ▢ FLARED END SECTION
- ▢ FIRE HYDRANT
- ▢ FIBER OPTIC PEDESTAL
- ▢ GAS METER
- ▢ GUY
- ▢ INVERT
- ▢ IRON PIPE SET
- ▢ IRP
- ▢ IRON ROD SET
- ▢ LPS
- ▢ LIGHT POLE
- ▢ MNS
- ▢ MAGNETIC NAIL SET
- ▢ MANHOLE SANITARY SEWER
- ▢ MANHOLE STORM SEWER
- ▢ OHW
- ▢ OVERHEAD WIRES
- ▢ PK
- ▢ PK NAIL SET
- ▢ PNT
- ▢ POINT NOT SET
- ▢ RRS
- ▢ RAIL ROAD SPIKE
- ▢ TPE
- ▢ TELEPHONE PEDESTAL
- ▢ TRF
- ▢ TRANSFORMER
- ▢ CTV
- ▢ CABLE TV PEDESTAL
- ▢ UP
- ▢ UTILITY POLE
- ▢ WM
- ▢ WATER METER
- ▢ WV
- ▢ WATER VALVE
- ▢ YI
- ▢ YARD INLET
- ( ) FIELD MEASUREMENT

**OLD COATS ROAD**  
 NCSR 1516  
 60' PUBLIC R/W

N48°40'44"E  
 47.33'

N49°10'15"E  
 93.40'

S14°25'24"E  
 126.97'

SETBACK LINES

21  
 0.699 AC.

22

20

SEE INSET

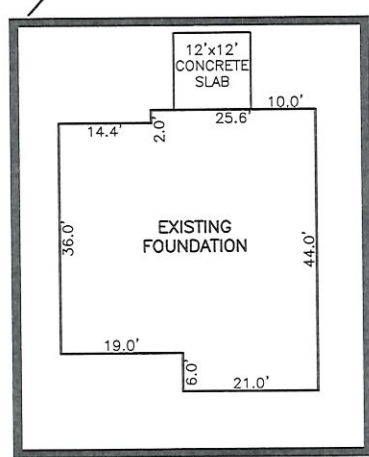
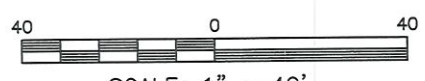
10' UTILITY, DRAINAGE AND SLOPE EASEMENT

**SETBACK INFO**

- FRONT: 35'
- REAR: 25'
- SIDES: 10'
- CORNER SIDE: 20'

**REFERENCES:**

B.M. 2023, PGS. 520-521



INSET SCALE: 1"=30'

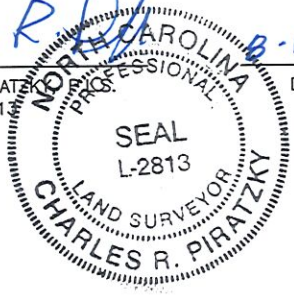
**WHISTLING WAY**  
 50' PUBLIC R/W

WAKE COUNTY, NORTH CAROLINA

I CERTIFY THAT THIS MAP WAS DRAWN UNDER MY SUPERVISION FROM FIELDWORK DONE UNDER MY SUPERVISION; THAT THE IMPROVEMENTS LIE WHOLLY UPON THE LOT AND THAT THE PROPERTY SHOWN IS AN EXISTING PARCEL OR PARCELS OF LAND.

*CLRD*  
 B-1-24

CHARLES R. PIRATZKY, PROFESSIONAL SURVEYOR, L-2813, DATE



THIS AS-BUILT IS FOR CODE COMPLIANCE. NOT FOR SALES OR CONVEYANCE

DATE: JULY 17, 2024

**NOTES**

1. THIS SURVEY SUBJECT TO ANY FACTS THAT MAY BE DISCLOSED BY A FULL AND ACCURATE TITLE SEARCH.
2. THIS MAP MAY NOT BE A CERTIFIED SURVEY AND HAS NOT BEEN REVIEWED BY A LOCAL GOVERNMENT AGENCY FOR COMPLIANCE WITH ANY APPLICABLE LAND DEVELOPMENT REGULATIONS AND HAS NOT BEEN REVIEWED FOR COMPLIANCE WITH RECORDING REQUIREMENTS FOR PLATS.

**RWK, PA**  
**ENGINEERING ~ SURVEYING**  
 CORPORATE LICENSE: C-1771  
 101 W. MAIN ST., SUITE 202  
 GARNER, NC 27529  
 PHONE (919) 779-4854  
 FAX (919) 779-4056

Q:\FieldLoc\HNC 20-21-22 fdn stake.plt