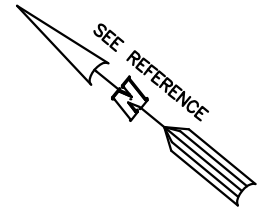


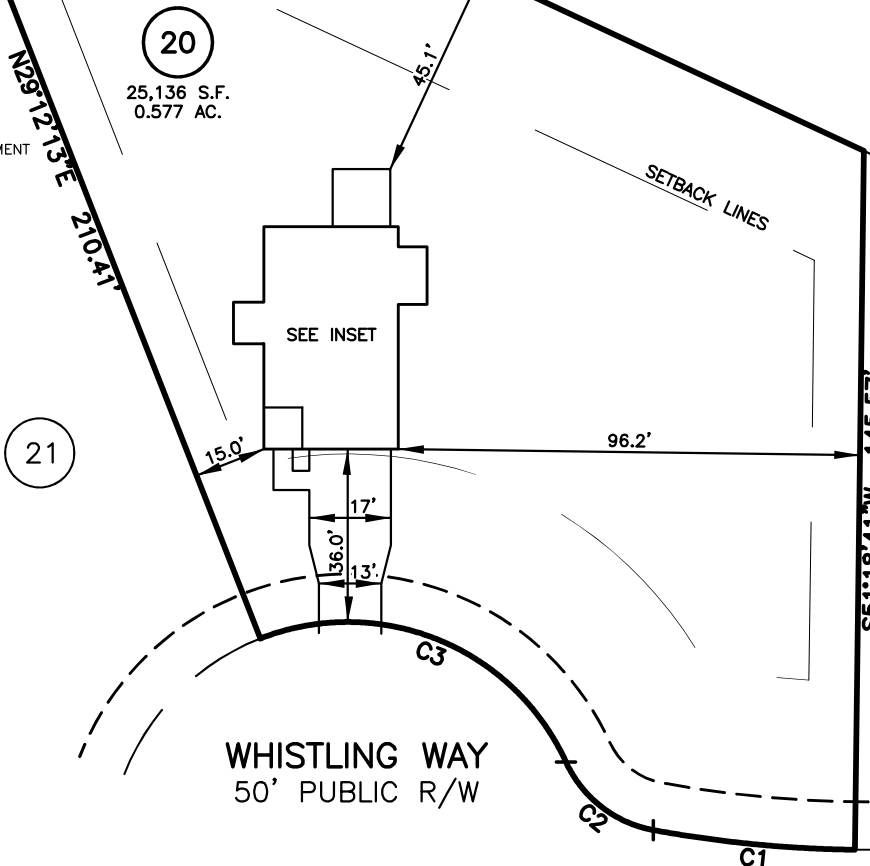
PLOT PLAN FOR  
**NEW HOME, INC.**  
 104 WHISTLING WAY  
 LOT 20, HERITAGE AT NEILL'S CREEK SUBDIVISION  
 NEILL'S CREEK TOWNSHIP, HARNETT COUNTY, NORTH CAROLINA

N\F  
 BEVERLY H. POLLOCK  
 D.B. 4017, PG. 99  
 P.B. 2021, PG. 282



**LEGEND**

- ▲ AIR CONDITIONER
- BC BACK OF CURB
- BFP BACK FLOW PREVENTER
- CLEANOUT
- CURB INLET
- DHS DRILL HOLE SET
- ECM EXISTING CONCRETE MONUMENT
- EDH EXISTING DRILL HOLE
- EIS EXISTING IRON STAKE
- EIP EXISTING IRON PIPE
- EM ELECTRIC METER
- EPK EXISTING PK NAIL
- FS ELECTRIC STUB
- FLR FLARED END SECTION
- FD FIRE HYDRANT
- FOP FIBER OPTIC PEDESTAL
- GM GAS METER
- GUY GUY
- INV INVERT
- IPS IRON PIPE SET
- IRS IRON ROD SET
- LIGHT POLE
- MNS MAGNETIC NAIL SET
- MS MANHOLE SANITARY SEWER
- MS MANHOLE STORM SEWER
- OHW OVERHEAD WIRES
- PKS PK NAIL SET
- PNS POINT NOT SET
- RRS RAIL ROAD SPIKE
- TELEPHONE PEDESTAL
- TRANSFORMER
- CABLE TV PEDESTAL
- UTILITY POLE
- WATER METER
- WATER VALVE
- YARD INLET
- ( ) FIELD MEASUREMENT



**SETBACK INFO**

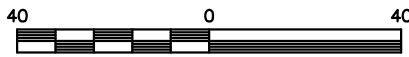
FRONT: 35'  
 REAR: 25'  
 SIDES: 10'  
 CORNER SIDE: 20'

NUM	RADIUS	ARC	DELTA	CHORD BRG	CHORD
C1	250.00'	42.18'	9°40'01"	N33°51'19"W	42.13'
C2	25.00'	23.98'	54°57'55"	N01°32'21"W	23.07'
C3	50.00'	75.69'	86°44'23"	N17°25'35"W	68.67'

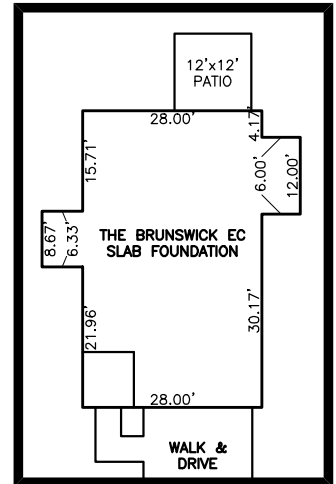
IMPERVIOUS SURFACES	S.F.
HOUSE	1,430
WALK & DRIVE	620
PATIO	150
TOTAL	2,200
MAX. IMPERVIOUS	7,050

**REFERENCES:**

B.M. 2023, PGS. 520-521



SCALE: 1" = 40'



INSET SCALE: 1" = 30'

**NOTES**

1. THIS SURVEY SUBJECT TO ANY FACTS THAT MAY BE DISCLOSED BY A FULL AND ACCURATE TITLE SEARCH.
2. THIS MAP MAY NOT BE A CERTIFIED SURVEY AND HAS NOT BEEN REVIEWED BY A LOCAL GOVERNMENT AGENCY FOR COMPLIANCE WITH ANY APPLICABLE LAND DEVELOPMENT REGULATIONS AND HAS NOT BEEN REVIEWED FOR COMPLIANCE WITH RECORDING REQUIREMENTS FOR PLATS.

PLOT PLAN  
 PRELIMINARY PLAT- NOT FOR RECORDATION,  
 CONVEYANCE OR SALES

REV CODE: 1.FLIP, 2.PLAN, 3.ROTATE, 4.MOVE, 5.SS  
 6.SEVERAL OF ABOVE, 7.LAND FEATURE, 8. OTHER

DATE: MAY 17, 2024

F.B. \_\_\_\_\_

RWK, PA

**ENGINEERING ~ SURVEYING**

CORPORATE LICENSE: C-1771  
 101 W. MAIN ST., SUITE 202  
 GARNER, NC 27529  
 PHONE (919) 779-4854  
 FAX (919) 779-4056