

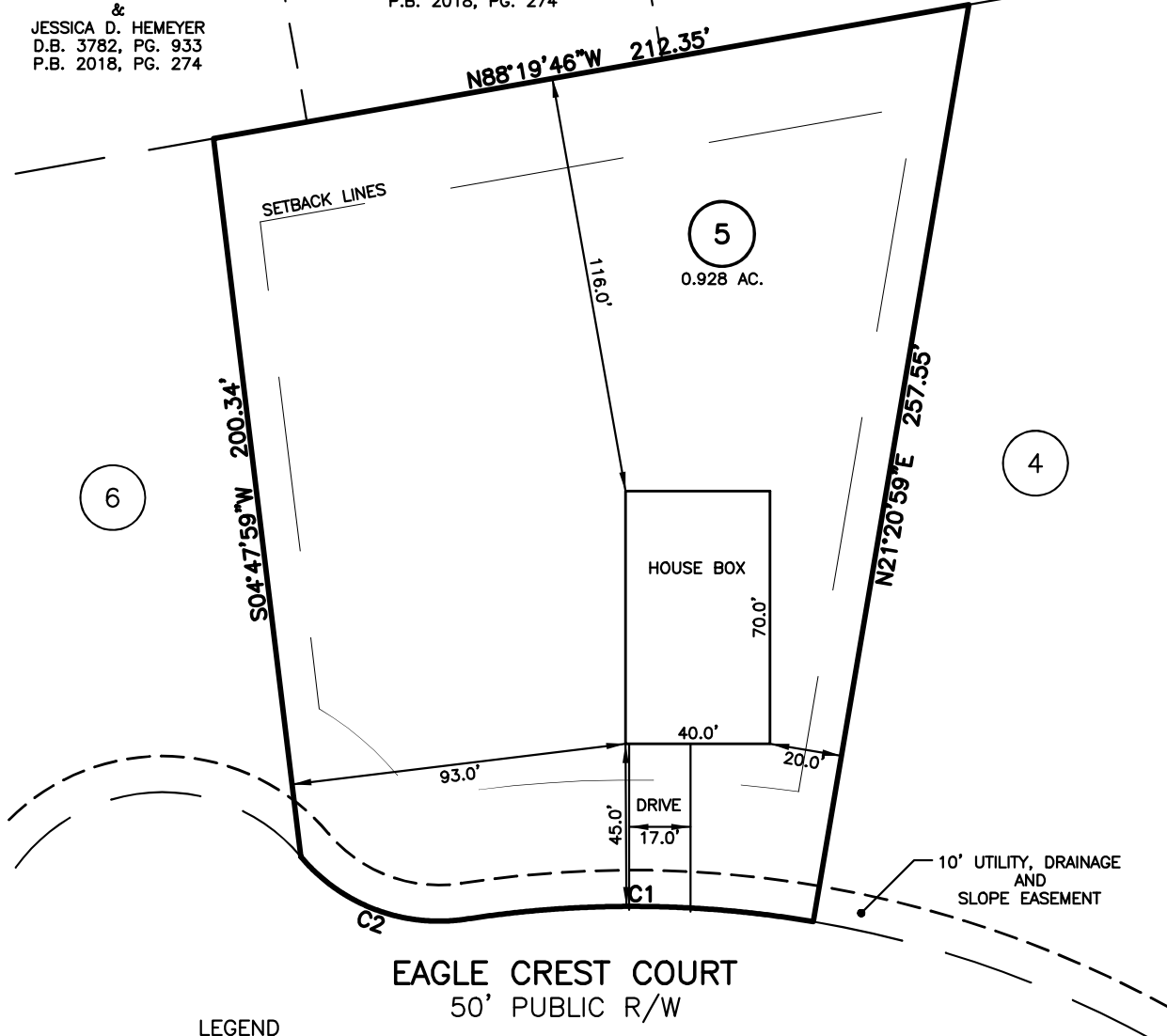
HOUSE FIT
NEW HOME, INC.
 98 EAGLE CREST COURT
 LOT 05, HERITAGE AT NEILL'S CREEK SUBDIVISION
 NEILL'S CREEK TOWNSHIP, HARNETT COUNTY, NORTH CAROLINA

N\F
 ROMANS 1:16, LLC
 D.B. 4011, PG. 582
 P.B. 2018, PG. 274

N\F
 RICHARD B. SHEFFIELD
 D.B. 3711, PG. 925
 P.B. 2018, PG. 274

N\F
 PIERA J. BOBROSKI TRUSTEE
 &
 TOMLINSON KEYSTONE IRREV TRUST
 D.B. 3823, PG. 434
 P.B. 2018, PG. 274

N\F
 CHRISTOPHER D.
 &
 JESSICA D. HEMEYER
 D.B. 3782, PG. 933
 P.B. 2018, PG. 274



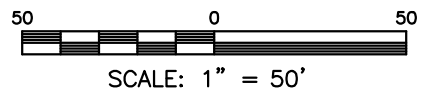
EAGLE CREST COURT
 50' PUBLIC R/W

LEGEND

- | | |
|--------------------------------|--------------------------|
| △ AIR CONDITIONER | INV. INVERT |
| BC BACK of CURB | IPS IRON PIPE SET |
| BFP BACK FLOW PREVENTER | IRS IRON ROD SET |
| ○ CLEANOUT | ○ LIGHT POLE |
| ■ CURB INLET | MNS MAGNETIC NAIL SET |
| DHS DRILL HOLE SET | ○ MANHOLE SANITARY SEWER |
| ECM EXISTING CONCRETE MONUMENT | ○ MANHOLE STORM SEWER |
| EDH EXISTING DRILL HOLE | OHV OVERHEAD WIRES |
| EIS EXISTING IRON STAKE | PKS PK NAIL SET |
| EIP EXISTING IRON PIPE | PNS POINT NOT SET |
| EM ELECTRIC METER | RRS RAIL ROAD SPIKE |
| EPK EXISTING PK NAIL | □ TELEPHONE PEDESTAL |
| ES ELECTRIC STUB | □ TRANSFORMER |
| FLARED END SECTION | □ CABLE TV PEDESTAL |
| ○ FIRE HYDRANT | ○ UTILITY POLE |
| ○ FIBER OPTIC PEDESTAL | ○ WATER METER |
| ○ GAS METER | ○ WATER VALVE |
| → GUY | ○ YARD INLET |
| | () FIELD MEASUREMENT |

NUM	RADIUS	ARC	DELTA	CHORD BRG	CHORD
C1	300.00'	96.36'	18°24'11"	N77°51'07"W	95.95'
C2	50.00'	51.28'	58°46'00"	N57°40'12"W	49.07'

REFERENCES:
 B.M. 2023, PGS. 520-521



FOR REPRESENTATIVE PURPOSES ONLY
 NOT FOR PERMITTING, RECORDATION,
 CONVEYANCE OR SALES

- NOTES**
1. THIS SURVEY SUBJECT TO ANY FACTS THAT MAY BE DISCLOSED BY A FULL AND ACCURATE TITLE SEARCH.
 2. THIS MAP MAY NOT BE A CERTIFIED SURVEY AND HAS NOT BEEN REVIEWED BY A LOCAL GOVERNMENT AGENCY FOR COMPLIANCE WITH ANY APPLICABLE LAND DEVELOPMENT REGULATIONS AND HAS NOT BEEN REVIEWED FOR COMPLIANCE WITH RECORDING REQUIREMENTS FOR PLATS.

HOUSE FIT
 ONLY

DATE: JAN. 03, 2024

 F.B. _____

RWK, PA
ENGINEERING ~ SURVEYING
 CORPORATE LICENSE: C-1771
 101 W. MAIN ST., SUITE 202
 GARNER, NC 27529
 PHONE (919) 779-4854
 FAX (919) 779-4056