

AS-BUILT IMPROVEMENTS FOR
NEW HOME, INC.
 60 EAGLE CREST COURT
 LOT 03, HERITAGE AT NEILL'S CREEK SUBDIVISION
 NEILL'S CREEK TOWNSHIP, HARNETT COUNTY, NORTH CAROLINA

N\F
 SFR JV-HD TL BORROWER A LLC
 &
 C/O TRICON AMERICAN HOMES LLC
 D.B. 4185, PG. 1239
 P.B. 2018, PG. 274

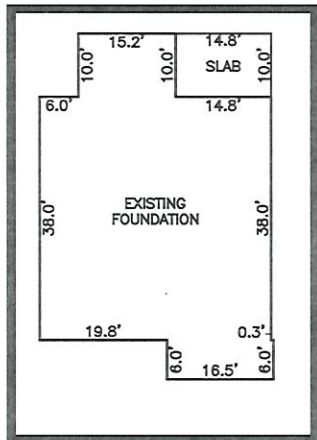
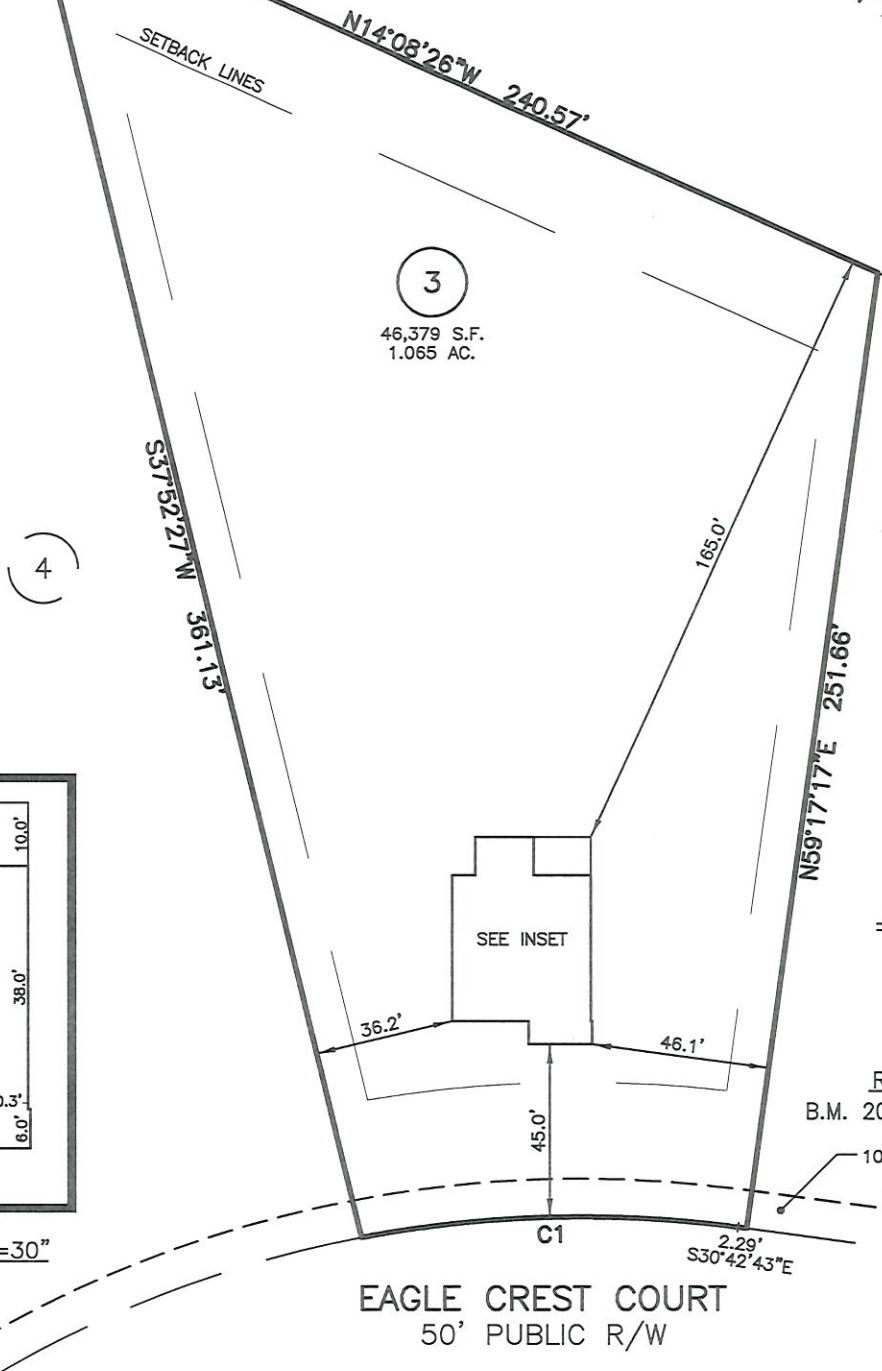
N\F
 TY M. & MELODY S. BUMGARDNER
 D.B. 3713, PG. 397
 P.B. 2018, PG. 274

ANTONIO PETRUZZO
 MARIANA HOFFMAN
 D.B. 2775, PG. 280
 MAP NUMBER 2003-139

B.M. 2023, PGS. 520-521

LEGEND

- ⊠ AIR CONDITIONER
- BC BACK OF CURB
- BFP BACK FLOW PREVENTER
- CLEANOUT
- ⊞ CURB INLET
- DHS DRILL HOLE SET
- ECM EXISTING CONCRETE MONUMENT
- EDH EXISTING DRILL HOLE
- EIS EXISTING IRON STAKE
- EIP EXISTING IRON PIPE
- EM ELECTRIC METER
- EPK EXISTING PK NAIL
- ES ELECTRIC STUB
- ⊞ FLARED END SECTION
- ⊞ FIRE HYDRANT
- ⊞ FIBER OPTIC PEDESTAL
- GM GAS METER
- GUY GUY
- INV INVERT
- IPS IRON PIPE SET
- IRS IRON ROD SET
- ⊞ LIGHT POLE
- MNS MAGNETIC NAIL SET
- ⊞ MANHOLE SANITARY SEWER
- ⊞ MANHOLE STORM SEWER
- OHV OVERHEAD WIRES
- PKS PK NAIL SET
- PNS POINT NOT SET
- RRS RAIL ROAD SPIKE
- ⊞ TELEPHONE PEDESTAL
- ⊞ TRANSFORMER
- ⊞ CABLE TV PEDESTAL
- ⊞ UTILITY POLE
- ⊞ WATER METER
- ⊞ WATER VALVE
- ⊞ YARD INLET
- ⊞ FIELD MEASUREMENT
- ⊞ REVISION TRIANGLE



INSET SCALE: 1"=30"

SETBACK INFO

FRONT: 35'
 REAR: 25'
 SIDES: 10'
 CORNER SIDE: 20'

REFERENCES:

B.M. 2023, PGS. 520-521

10' UTILITY, DRAINAGE AND SLOPE EASEMENT

EAGLE CREST COURT
 50' PUBLIC R/W

NUM	RADIUS	ARC	DELTA	CHORD BRG	CHORD
C1	300.0'	98.18'	18°45'01"	S 40°05'13" E	97.74'

WAKE COUNTY, NORTH CAROLINA

I CERTIFY THAT THIS MAP WAS DRAWN UNDER MY SUPERVISION FROM FIELDWORK DONE UNDER MY SUPERVISION; THAT THE IMPROVEMENTS LIE WHOLLY UPON THE LOT AND THAT THE PROPERTY SHOWN IS AN EXISTING PARCEL OR PARCELS OF LAND.

Charles R. Piratzky

12.3.24

CHARLES R. PIRATZKY, DATE
 L-2813



THIS AS-BUILT IS FOR CODE COMPLIANCE. NOT FOR SALES OR CONVEYANCE



NOTES SCALE: 1" = 50'

- THIS SURVEY SUBJECT TO ANY FACTS THAT MAY BE DISCLOSED BY A FULL AND ACCURATE TITLE SEARCH.
- THIS MAP MAY NOT BE A CERTIFIED SURVEY AND HAS NOT BEEN REVIEWED BY A LOCAL GOVERNMENT AGENCY FOR COMPLIANCE WITH ANY APPLICABLE LAND DEVELOPMENT REGULATIONS AND HAS NOT BEEN REVIEWED FOR COMPLIANCE WITH RECORDING REQUIREMENTS FOR PLATS.

DATE: NOV. 27, 2024

Q:\FieldLoc\HNC 3.FDN.txt

RWK, PA
 ENGINEERING ~ SURVEYING
 CORPORATE LICENSE: C-1771
 101 W. MAIN ST., SUITE 202
 GARNER, NC 27529
 PHONE (919) 779-4854
 FAX (919) 779-4056