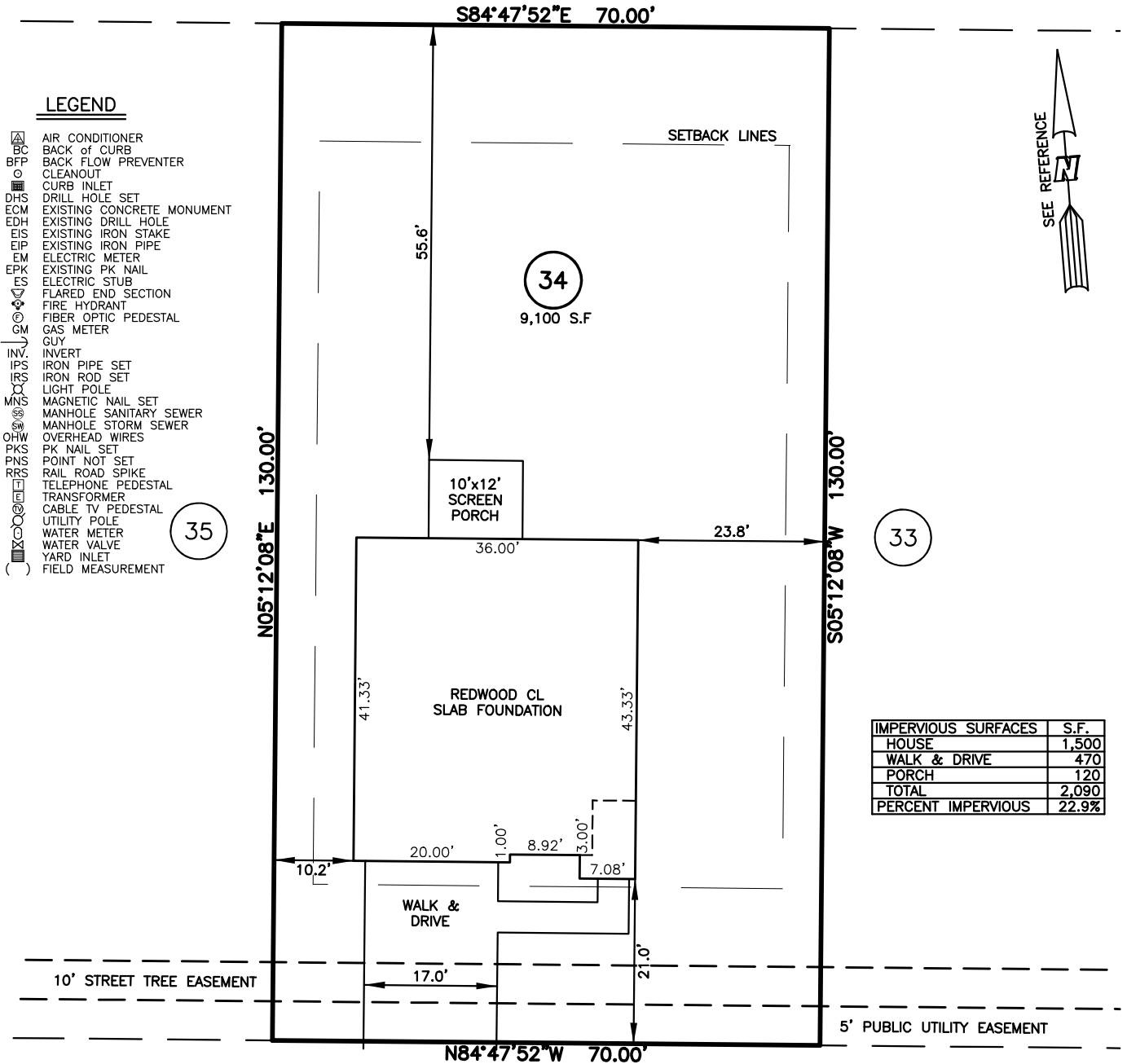


**PLOT PLAN FOR
MATTAMY HOMES**
96 PROVIDENCE CREEK DRIVE
LOT 34, PROVIDENCE CREEK PHASE 1
HECTORS CREEK AND BLACK RIVER TOWNSHIP, HARNETT COUNTY, NORTH CAROLINA

OPEN SPACE #5



- LEGEND**
- △ AIR CONDITIONER
 - BC BACK of CURB
 - BFP BACK FLOW PREVENTER
 - CLEANOUT
 - CURB INLET
 - DHS DRILL HOLE SET
 - ECM EXISTING CONCRETE MONUMENT
 - EDH EXISTING DRILL HOLE
 - EIS EXISTING IRON STAKE
 - EIP EXISTING IRON PIPE
 - EM ELECTRIC METER
 - EPK EXISTING PK NAIL
 - ES ELECTRIC STUB
 - FLA FLARED END SECTION
 - ⊕ FIRE HYDRANT
 - ⊙ FIBER OPTIC PEDESTAL
 - GM GAS METER
 - GUY GUY
 - INV INVERT
 - IPS IRON PIPE SET
 - IRS IRON ROD SET
 - LIGHT POLE
 - MNS MAGNETIC NAIL SET
 - ⊙ MANHOLE SANITARY SEWER
 - ⊙ MANHOLE STORM SEWER
 - OHW OVERHEAD WIRES
 - PKS PK NAIL SET
 - PNS POINT NOT SET
 - RRS RAIL ROAD SPIKE
 - TELEPHONE PEDESTAL
 - TRANSFORMER
 - CABLE TV PEDESTAL
 - UTILITY POLE
 - WATER METER
 - WATER VALVE
 - YARD INLET
 - () FIELD MEASUREMENT

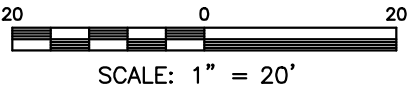


IMPERVIOUS SURFACES	S.F.
HOUSE	1,500
WALK & DRIVE	470
PORCH	120
TOTAL	2,090
PERCENT IMPERVIOUS	22.9%

SETBACK INFO

FRONT:	20'
REAR:	15'
SIDES:	5'
CORNER SIDE:	15'

REFERENCES:
BM 2022 PGS 346-351



- NOTES**
1. THIS SURVEY SUBJECT TO ANY FACTS THAT MAY BE DISCLOSED BY A FULL AND ACCURATE TITLE SEARCH.
 2. THIS MAP MAY NOT BE A CERTIFIED SURVEY AND HAS NOT BEEN REVIEWED BY A LOCAL GOVERNMENT AGENCY FOR COMPLIANCE WITH ANY APPLICABLE LAND DEVELOPMENT REGULATIONS AND HAS NOT BEEN REVIEWED FOR COMPLIANCE WITH RECORDING REQUIREMENTS FOR PLATS.

PLOT PLAN
PRELIMINARY PLAT- NOT FOR RECORDATION,
CONVEYANCE OR SALES

REV CODE: 1.FLIP, 2.PLAN, 3.ROTATE, 4.MOVE, 5.SS
6.SEVERAL OF ABOVE, 7.LAND FEATURE, 8. OTHER

DATE: JAN. 08, 2024

F.B. _____

RWK, PA
ENGINEERING ~ SURVEYING
CORPORATE LICENSE: C-1771
101 W. MAIN ST., SUITE 202
GARNER, NC 27529
PHONE (919) 779-4854
FAX (919) 779-4056