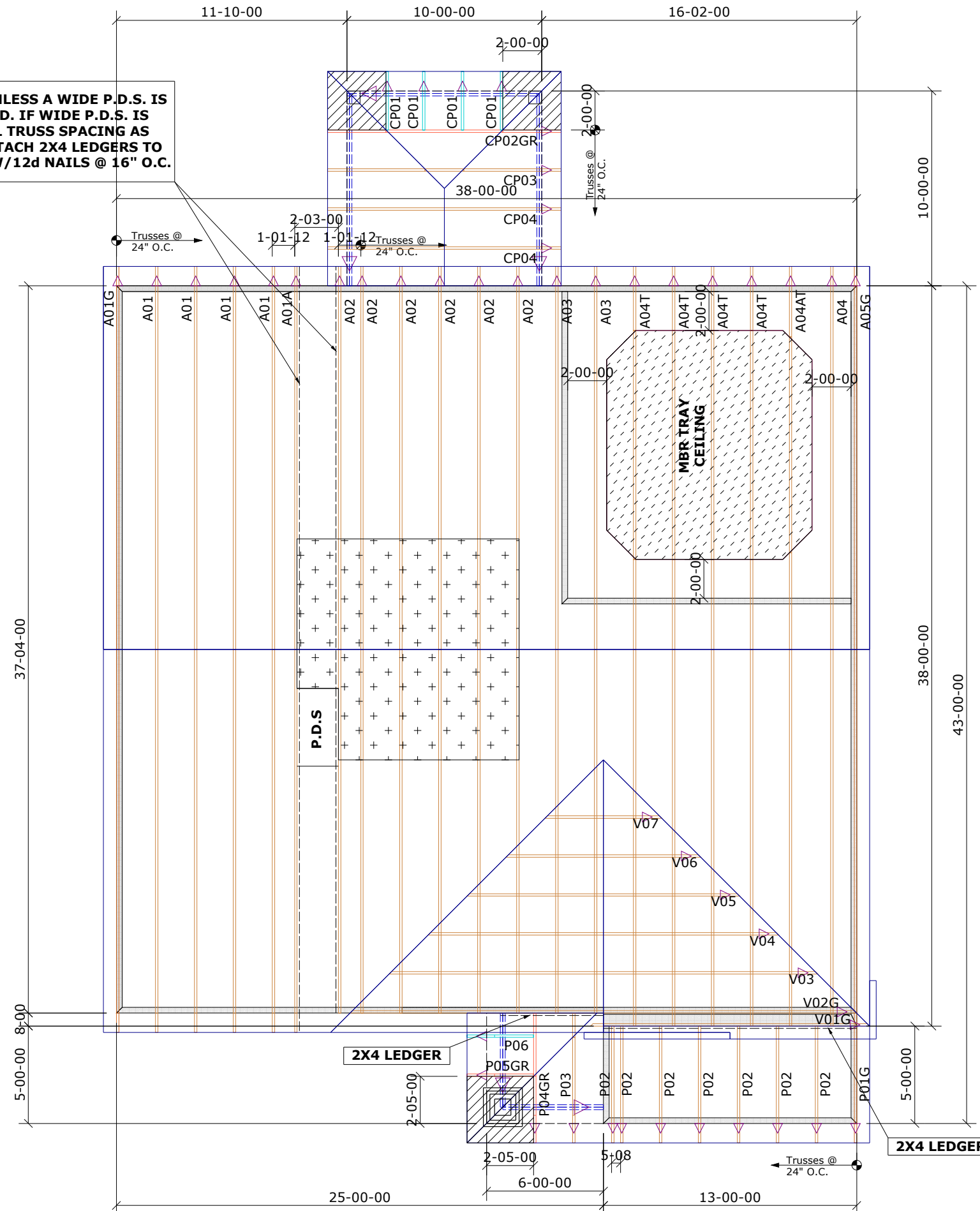


**Builders First Source**  
 23 Red Cedar Way  
 Apex, NC 27523  
 Phone: (919) 363-4956  
 Fax: (919) 387-8565  
<http://www.blr.com>

- General Notes:**
- Per ANSI/TPI 1-2002 all " Truss to Wall" connections are the responsibility of the Building Designer, not the Truss Manufacturer.
  - Dimensions are Feet-Inches- Sixteenths.
  - Trusses are to be 24" o.c. unless noted otherwise (U.N.O.)
  - Trusses are not designed to support brick U.N.O.
  - Do not cut or modify trusses without first contacting Builders FirstSource.
  - Immediately contact Builders FirstSource if trusses are damaged.
- Connection Notes:**
- All hangers are to be Simpson or equivalent U.N.O.
  - Use Manufacturer's specifications for all hanger connections U.N.O.
  - Use 10d x 1 1/2" Nails in hanger connections to single ply roof girder trusses.
- Floor Notes:**
- Shift truss as required to avoid plumbing traps.
  - Installation Contractor and/or Field Supervisor are to verify all dimensions, trap locations, and options prior to installation
- Dimension Notes:**
- Drawing not to scale. Do not scale dimensions

**SPACE TRUSSES 2' O.C. UNLESS A WIDE P.D.S. IS GOING TO BE INSTALLED. IF WIDE P.D.S. IS USED, FOLLOW SPECIAL TRUSS SPACING AS NOTED ON LAYOUT, & ATTACH 2X4 LEDGERS TO TOP & BOTTOM CHORDS W/12d NAILS @ 16" O.C.**



<b>Hanger List</b>	All Tie Downs H2.5A Unless noted
<b>Special Items List</b>	
<b>Misc Material</b>	
CHESAPEAKE HOMES	
PLAN 755	Elev: A
NEILL'S CREEK FARMS	
HARNETT CO	NC Lot: 131
<b>Appwright #</b>	
---	
<b>Code:</b> IRC 2015	
<b>Loading:</b>	
T.C.L.L.	20.0 lb/ft2
B.C.L.L.	0.0 lb/ft2
B.C.D.L.	10.0 lb/ft2
<b>Designed By:</b> MWA	T.C.D.L
<b>Layout:</b> 755 H	B.C.L.L.
<b>L/O Date:</b> 01/02/2024	B.C.D.L.
<b>Revision History</b>	
Rev1:	xx/xx/xx M.P.H. 120
Rev2:	xx/xx/xx Exposure Category
Rev3:	xx/xx/xx B
<b>Pick Ticket:</b> ---	<b>Job No:</b> ---
<b>Sales No:</b> ---	<b>Acct No:</b> ---

<b>Hatch Legend</b>	
	Attic Room
	Volume Ceiling
	Stick Framing