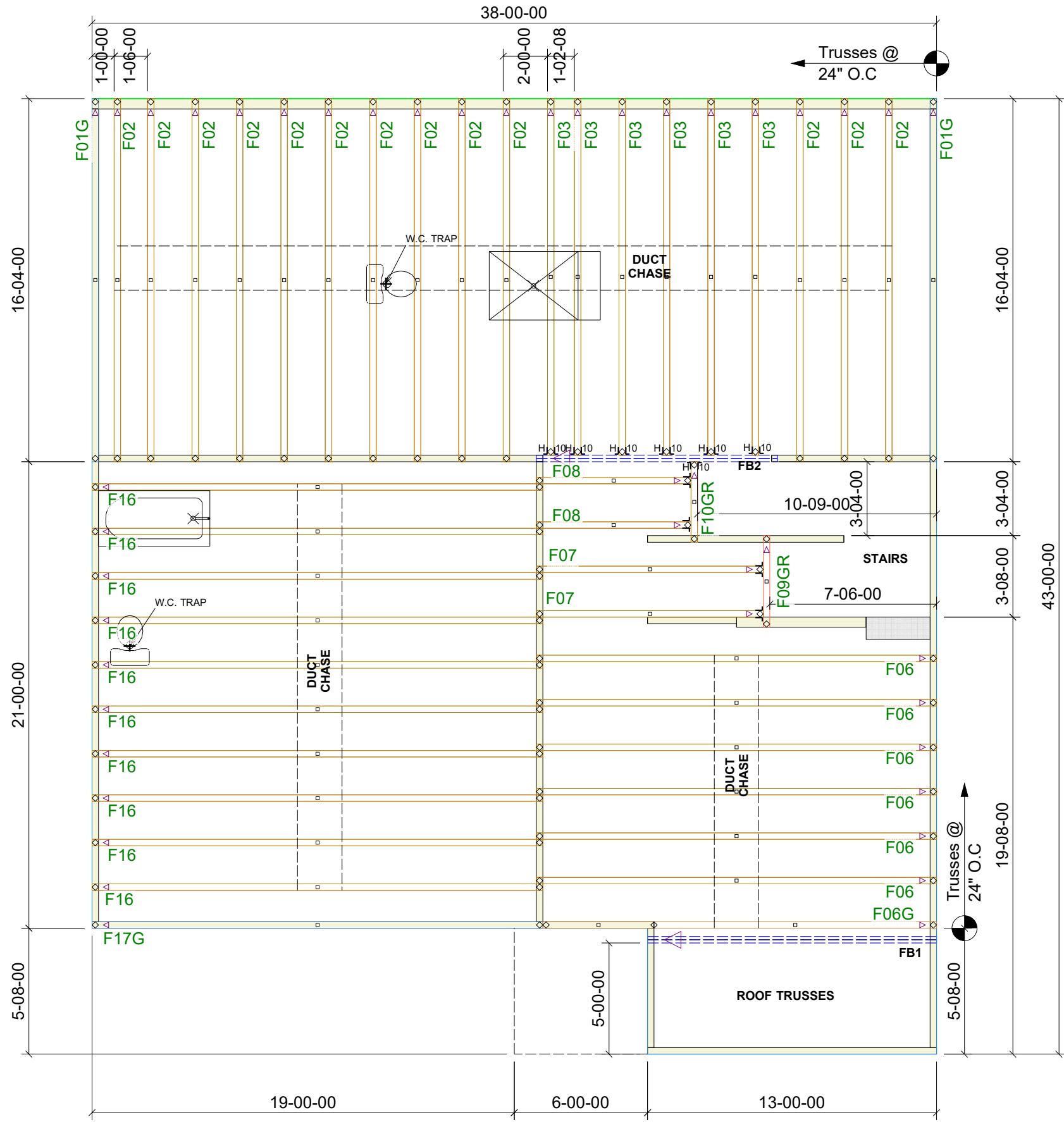
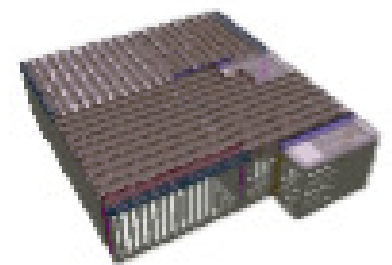


General Notes:
 - Per ANSI/TPI 1-2002 all " Truss to Wall" connections are the responsibility of the Building Designer, not the Truss Manufacturer.
 - Dimensions are Feet-Inches- Sixteenths.
 - Trusses are to be 24" o.c. unless noted otherwise (U.N.O.)
 - Trusses are not designed to support brick U.N.O.
 - Do not cut or modify trusses without first contacting Builders FirstSource.
 - Immediately contact Builders FirstSource if trusses are damaged.
Connection Notes:
 - All hangers are to be Simpson or equivalent U.N.O.
 - Use Manufacturer's specifications for all hanger connections U.N.O.
 - Use 10d x 1 1/2" Nails in hanger connections to single ply roof girder trusses.
Floor notes:
 - Shift truss as required to avoid plumbing traps.
 - Installation Contractor and/or Field Supervisor are to verify all dimensions, trap locations, and options prior to installation
Dimension Notes:
 - Drawing not to scale. Do not scale dimensions

◁ ▷ ▷ ▷ LEFT END OF TRUSS AS SHOWN ON TRUSS
 DETAIL DRAWINGS ARE INDICATED BY TRIANGLE ICONS.



HANGER LIST		ALL TIE DOWNS H2.5A UNLESS NOTED	
4	THA422	J	L
7	LUS410	L	U

BEAM LIST	
FB1	(2) 1-3/4" x 14" x 14'-0"
FB2	(2) 1-3/4" x 14" x 12'-0"

CHESAPEAKE HOMES	
755H	ELEV: A
THE FARM AT NEILL'S CREEK	
HARNETT CO. NC	LOT: 131
APPWRIGHT #	

• FLOOR	CODE: IRC 2015
• [OPTION 2]	LOADING:
• [OPTION 3]	T.C.L.L. 40 PSF
DESIGNED BY: MWA	T.C.D.L. 10 PSF
LAYOUT: 755	B.C.L.L. 0 PSF
L/O DATE: 2/3/2024	B.C.D.L. 5 PSF
REVISION HISTORY	
REV1: XX/XX/XX	M.P.H. 115 MPH
REV2: XX/XX/XX	EXPOSURE CATEGORY
REV3: XX/XX/XX	B (WOODED AREAS/OTHERS)
SALES NO: ---	JOB NO: ---
---	ACCT NO: ---

HATCH LEGEND	
	ATTIC ROOM
	VOLUME CEILING
	STICK FRAMING

