

General Notes:

- Per ANSI/TPI 1-2002 all " Truss to Wall" connections are the responsibility of the Building Designer, not the Truss Manufacturer.
- Dimensions are Feet-Inches- Sixteenths.
- Trusses are to be 24" o.c. unless noted otherwise (U.N.O.)
- Trusses are not designed to support brick U.N.O.
- Do not cut or modify trusses without first contacting Builders FirstSource.
- Immediately contact Builders FirstSource if trusses are damaged.

Connection Notes:

- All hangers are to be Simpson or equivalent U.N.O.
- Use Manufacturer's specifications for all hanger connections U.N.O.
- Use 10d x 1 1/2" Nails in hanger connections to single ply roof girder trusses.

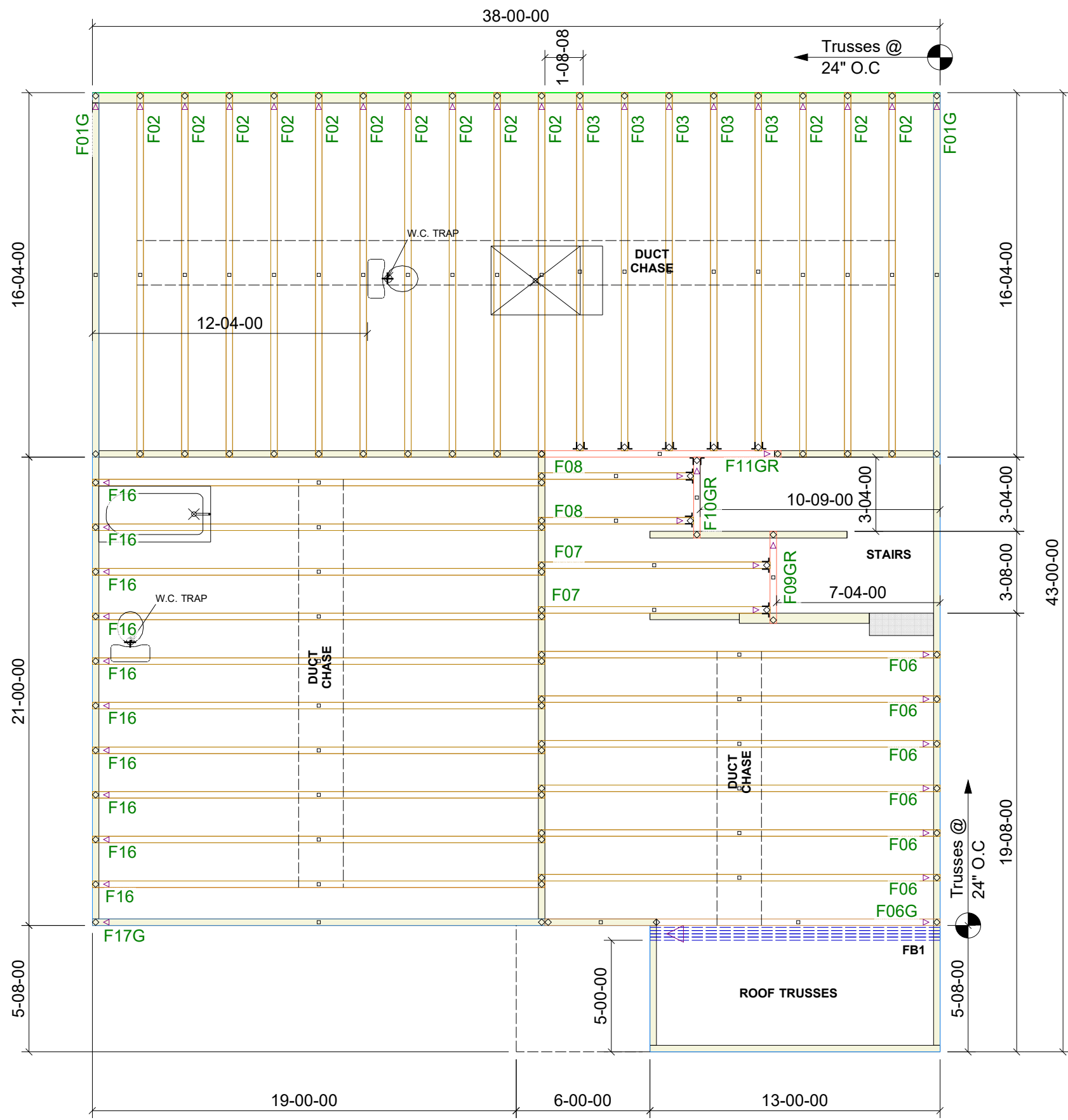
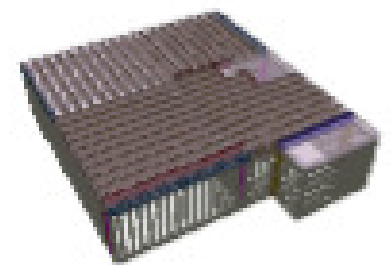
Floor notes:

- Shift truss as required to avoid plumbing traps.
- Installation Contractor and/or Field Supervisor are to verify all dimensions, trap locations, and options prior to installation

Dimension Notes:

- Drawing not to scale. Do not scale dimensions

◁ ▷ ▷ ▷ LEFT END OF TRUSS AS SHOWN ON TRUSS DETAIL DRAWINGS ARE INDICATED BY TRIANGLE ICONS.



HANGER LIST		ALL TIE DOWNS H2.5A UNLESS NOTED	
10	THA422	J	L
BEAM LIST			
		FB1	(4) 1-3/4" x 16" x 14'-0"

CHESAPEAKE HOMES	
755H	ELEV: A
NEILL'S CREEK FARMS	
HARNETT CO. NC	LOT: 131
APPWRIGHT #	
• FLOOR	
• [OPTION 2]	
• [OPTION 3]	
CODE:	IRC 2015
LOADING:	
T.C.L.L.	40 PSF
DESIGNED BY:	MWA
T.C.D.L.	10 PSF
LAYOUT:	755
B.C.L.L.	0 PSF
L/O DATE:	1/2/2024
B.C.D.L.	5 PSF
REVISION HISTORY	
REV1:	XX/XX/XX
REV2:	XX/XX/XX
REV3:	XX/XX/XX
WIND:	
M.P.H.	115 MPH
EXPOSURE CATEGORY	
B (WOODED AREAS/OTHERS)	
PICK TICKET:	---
JOB NO.:	---
SALES NO.:	---
ACCT NO.:	---

HATCH LEGEND	
	ATTIC ROOM
	VOLUME CEILING
	STICK FRAMING

