

James W. Mauldin
10/29/21

Course	Bearing	Distance
L1	S 89°16'35" E	22.39'
L2	S 07°12'46" W	15.10'
L3	N 89°16'35" W	10.51'
L4	N 33°25'55" W	18.13'
L5	N 89°16'35" W	74.59'
L6	S 00°43'25" W	32.80'
L7	S 00°43'25" W	89.00'
L8	S 00°43'25" W	15.00'
L9	S 09°46'31" W	15.19'
L10	S 10°02'59" W	37.62'
L11	S 09°23'37" W	64.80'
L12	S 08°32'49" W	61.85'
L13	S 07°30'50" W	9.68'
L14	S 86°04'12" E	18.80'
L15	S 86°04'12" E	6.61'
L16	N 13°38'18" W	36.71'
L17	S 86°05'16" E	20.98'
L18	S 13°38'18" E	36.61'
L19	S 13°38'18" E	15.86'
L20	N 03°55'48" E	18.85'
L21	N 00°51'04" E	15.00'
L22	N 00°51'04" E	25.00'
L23	N 03°55'48" E	25.00'
L24	S 86°04'12" E	9.59'
L25	N 03°55'48" E	15.02'

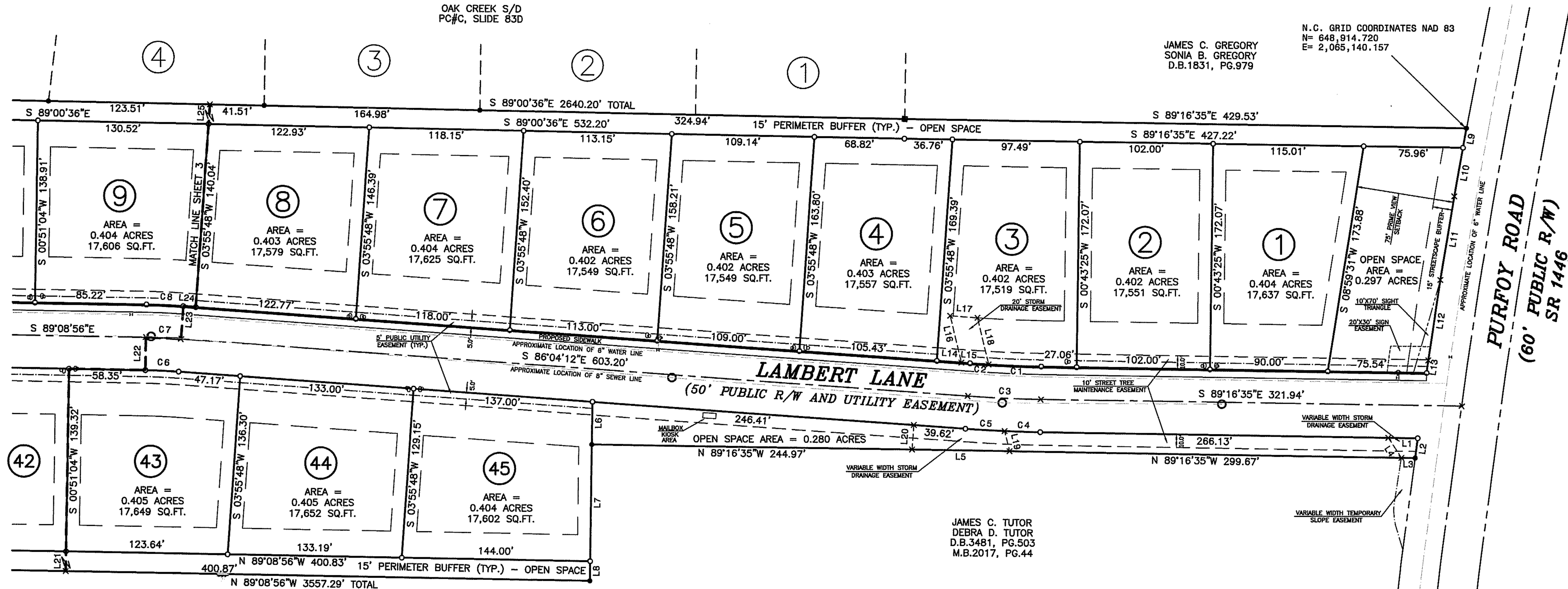
Curve	Radius	Length	Chord	Chord Bear.
C1	975.00'	40.23'	40.22'	N 88°05'40" W
C2	975.00'	14.34'	14.34'	N 86°29'29" W
C3	1000.00'	55.96'	55.96'	N 87°40'24" W
C4	1025.00'	27.30'	27.30'	N 88°30'49" W
C5	1025.00'	30.07'	30.06'	N 88°30'49" W
C6	475.00'	25.52'	25.52'	S 87°36'34" E
C7	500.00'	26.87'	26.87'	S 87°36'34" E
C8	525.00'	28.21'	28.21'	S 87°36'34" E

N.C. GRID NORTH NAD 83 (6911)
NCRASS-RTK-NETWORK GEOID 128
NOVEMBER 21, 2018 - SPECTRA 80

OAK CREEK S/D
PC#C, SLIDE 83D

JAMES C. GREGORY
SONIA B. GREGORY
D.B.1831, PG.979

N.C. GRID COORDINATES NAD 83
N = 648,914.720
E = 2,065,140.157



JAMES C. TUTOR
DEBRA D. TUTOR
D.B.3481, PG.503
M.B.2017, PG.44

HARNETT COUNTY
MINIMUM BUILDING
SETBACK REQUIREMENTS

JAMES C. TUTOR
DEBRA D. TUTOR
D.B.3481, PG.503
M.B.2017, PG.44

FRONT: 35' FROM R/W
REAR: 20'
SIDE: 10'
CORNER LOT SIDE: 10'

- LEGEND**
- Existing Iron Pipe (Control Point)
 - Iron Stake Set (unless otherwise noted)
 - Existing Concrete Monument (Control Point)
 - Concrete Monument Set
 - X Computed Point Only
 - WATER METER
 - ◇ FIRE HYDRANT
 - SEWER CLEAN OUT
 - * WATER VALVE
 - SANITARY SEWER MANHOLE
 - WATER LINE
 - SEWER LINE

All measurements shown are horizontal ground measurements unless otherwise noted.
Area computed by coordinates

Zone: RA-40 Pin#: 0664-38-0507.000
LAND USE CLASSIFICATION = MEDIUM DENSITY RESIDENTIAL

SHEET 2 OF 5



OWNER:
DEVELOPMENT BY THE NUMBERS, INC.
1001 PROCURE STREET, SUITE 101
FUQUAY-VARINA, N.C. 27526

**SUBDIVISION MAP FOR:
PURFOY PLACE SUBDIVISION**

HECTOR'S CREEK TOWNSHIP, HARNETT COUNTY, NORTH CAROLINA
SCALE 1" = 60' MARCH 15, 2021
REVISED: JUNE 2, 2021 (COUNTY COMMENTS)

MAULDIN - WATKINS SURVEYING, P.A.
P.O. BOX 444 / 139 N. MAIN ST.
FUQUAY VARINA, NORTH CAROLINA 27526
(919) 552-9326 C-929