

SOUTHEASTERN SOIL & ENVIRONMENTAL ASSOC., INC.

PROPOSED SUBSURFACE WASTE DISPOSAL SYSTEM DETAIL SHEET

SUBDIVISION: BLAKE POND

LOT 99

INITIAL SYSTEM: APPROVED 25% REDUCTION

REPAIR: APPROVED 25% REDUCTION

DISTRIBUTION: SERIAL

DISTRIBUTION SERIAL

BENCHMARK: 100.0

LOCATION PC 98/99

NO. BEDROOMS: 4

LTAR 0.35 GPO/FT<sup>2</sup>

SEPTIC TANK SIZE: 1000

PUMP TANK SIZE: NA

LINE	FLAG COLOR	ELEVATION	LENGTH
1 2 3	B	106.00	115'
	R	105.42	115'
	B	104.92	115'
			<u>345'</u>
4	R	104.84	115'
5	B	104.42	115'
6	R	103.84	115'
			<u>345'</u>

In. full system

BY: M EAKER

DATE 12/2022

TYPICAL PROFILE

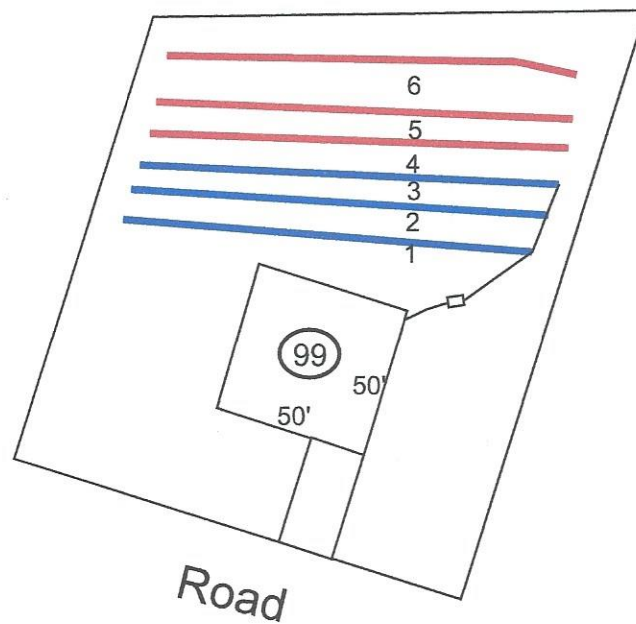
0-10 US (UF, wgs)  
10-40+ SCL (F, sbl)  
cr 2 ≥ 34"  
INITIAL AT 18"

THERE SHALL BE NO GRADING,  
CUTTING, LOGGING OR OTHER SOIL  
DISTURBANCE IN SEPTIC AREA

HEALTH DEPARTMENT USE ONLY.  
DESIGNS DO NOT GUARANTEE FUNCTIONALITY

# Southeastern Soil & Environmental Associates, Inc.

P.O. Box 9321  
Fayetteville, NC 28311  
Phone/Fax (910) 822-4540  
Email mike@southeasternsoil.com



Scale  
1:60

