

Products				
PlotID	Length	Product	Piles	Net Qty
BM-1	24' 0"	1-3/4" x 9-1/2" VERSA-LAM@ 2.0 3100 SP	2	2
BM-2	10' 0"	1-3/4" x 9-1/2" VERSA-LAM@ 2.0 3100 SP	2	2
BM-3	8' 0"	1-3/4" x 9-1/2" VERSA-LAM@ 2.0 3100 SP	2	2
BM-4	22' 0"	1-3/4" x 11-7/8" VERSA-LAM@ 2.0 3100 SP	2	2

Truss Connector Total List		
Manuf	Product	Qty
Simpson	HTU26	16

Extreme care must be taken to not set any of these trusses backwards.

WARNING! Long span trusses, 60' or greater in length, require extreme care and experience for proper and safe handling and installation. For general handling and installation guidance, see the "Guide to Good Practice for Handling, Installing, Restraining & Bracing of Metal Plate Connected Wood Trusses ("BCSI"), JOINTLY PRODUCED BY SBCA and TPI. For project specific guidance, consult with a registered design professional. ATLANTIC assumes no responsibility for the handling, installation or bracing of trusses.

FOR PERMIT

Client: **MATTAMY HOMES-RALEIGH**

Job: **LOT 31 PROVIDENCE CREEK**

Plan Information: **GLADES-FC**

NOT TO SCALE
Date: 01/05/24

Drawn By: **MBB**
Sales Rep: **KYLE GIBSON**

Job #: **24-0140-R01**
Phone:

ROOF

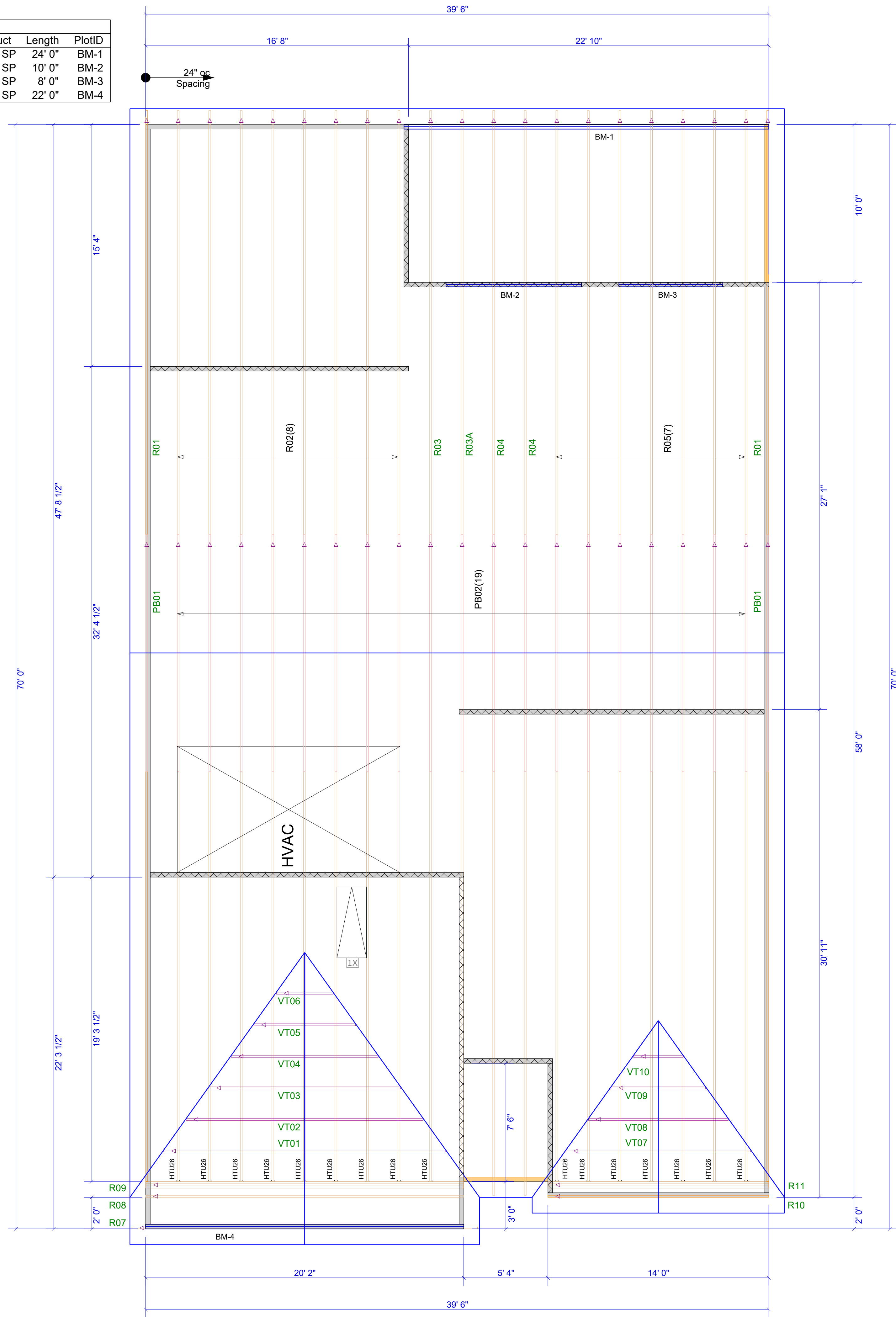
▲ = LEFT END OF TRUSS

Moncks Corner/Easley, SC (800) 475-3999
Sparta, NC (336) 372-2226

Products					
Net Qty	Plies	Product	Product	Length	PlotID
2	2	1-3/4" x 9-1/2"	VERSA-LAM® 2.0 3100 SP	24' 0"	BM-1
2	2	1-3/4" x 9-1/2"	VERSA-LAM® 2.0 3100 SP	10' 0"	BM-2
2	2	1-3/4" x 9-1/2"	VERSA-LAM® 2.0 3100 SP	8' 0"	BM-3
2	2	1-3/4" x 11-7/8"	VERSA-LAM® 2.0 3100 SP	22' 0"	BM-4

Truss Connector Total List		
Qty	Product	Manuf
16	HTU26	Simpson

Extreme care must be taken to not set any of these trusses backwards.



▲ = LEFT END OF TRUSS

REVISIONS:



Moncks Corner/Easley, SC (800) 475-3999
Sparta, NC (336) 372-2226

FOR PERMIT

Client:	MATTAMY HOMES-RALEIGH
Job:	LOT 31 PROVIDENCE CREEK
Plan Information:	GLADES-FC
NOT TO SCALE	Date: 01/05/24
Drawn By: MBB	Job #: 24-0140-R01
	Sales Rep: KYLE GIBSON
	Phone:

ROOF

WARNING! Long span trusses, 60' or greater in length, require extreme care and experience for proper and safe handling and installation. For general handling and installation guidance, see the "Guide to Good Practice for Handling, Installing, Restraining & Bracing of Metal Plate Connected Wood Trusses ("BCSI"), JOINTLY PRODUCED BY SBCA and TPI. For project specific guidance, consult with a registered design professional. ATLANTIC assumes no responsibility for the handling, installation or bracing of trusses.