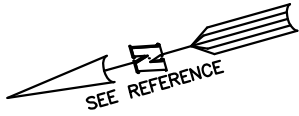


PLOT PLAN FOR
MATTAMY HOMES
 00 COTTONSEED LANE
 LOT 31, PROVIDENCE CREEK PHASE 1
 HECTORS CREEK AND BLACK RIVER TOWNSHIP, HARNETT COUNTY, NORTH CAROLINA

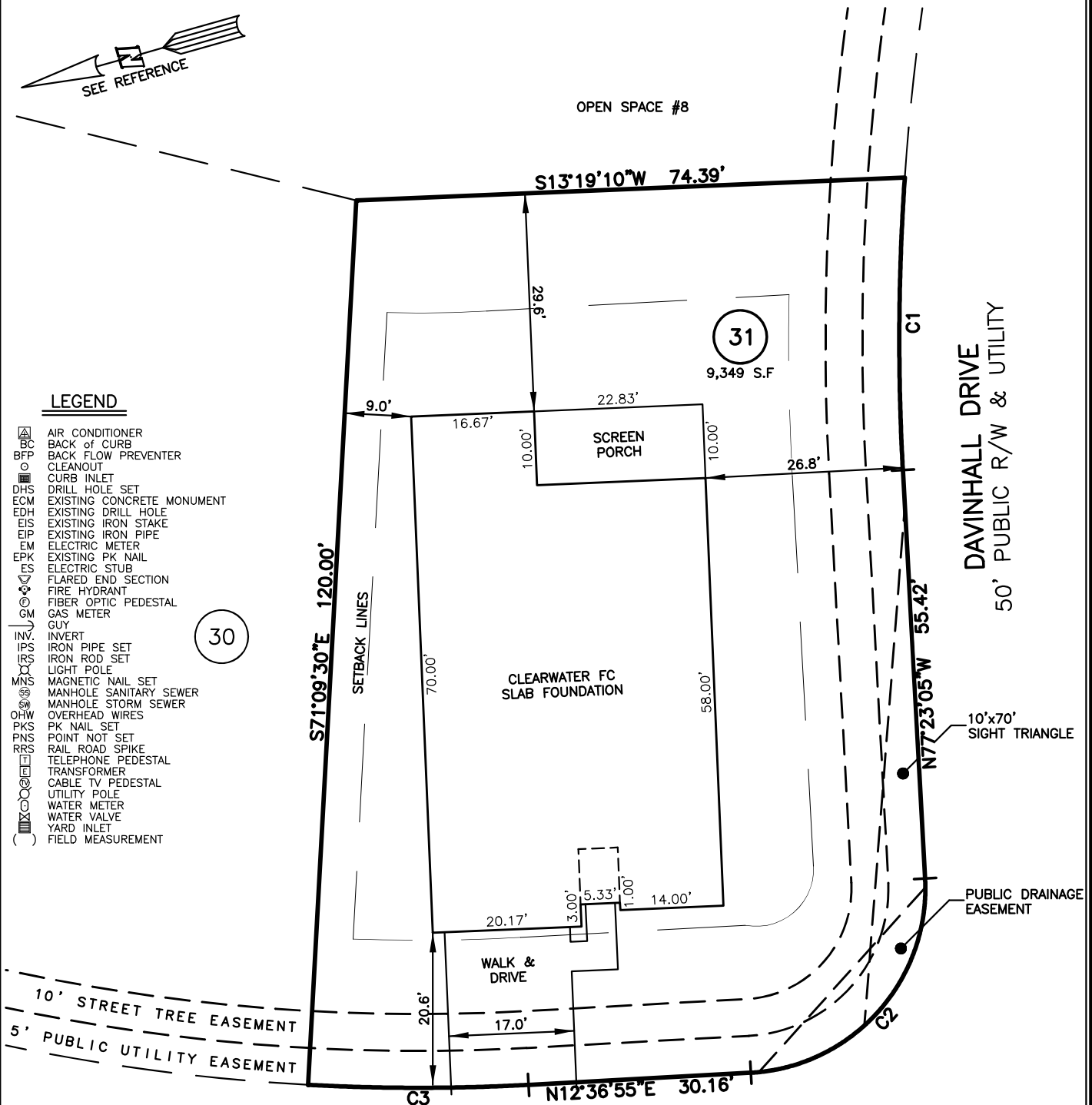


OPEN SPACE #8

- LEGEND**
- △ AIR CONDITIONER
 - BC BACK of CURB
 - BFP BACK FLOW PREVENTER
 - CLEANOUT
 - CURB INLET
 - DHS DRILL HOLE SET
 - ECM EXISTING CONCRETE MONUMENT
 - EDH EXISTING DRILL HOLE
 - EIS EXISTING IRON STAKE
 - EIP EXISTING IRON PIPE
 - EM ELECTRIC METER
 - EPK EXISTING PK NAIL
 - ES ELECTRIC STUB
 - FLR FLARED END SECTION
 - FH FIRE HYDRANT
 - FOP FIBER OPTIC PEDESTAL
 - GM GAS METER
 - GUY GUY
 - INV. INVERT
 - IPS IRON PIPE SET
 - IRS IRON ROD SET
 - LP LIGHT POLE
 - MNS MAGNETIC NAIL SET
 - MS MANHOLE SANITARY SEWER
 - MS MANHOLE STORM SEWER
 - OHV OVERHEAD WIRES
 - PKS PK NAIL SET
 - PNS POINT NOT SET
 - RRS RAIL ROAD SPIKE
 - TEP TELEPHONE PEDESTAL
 - TRF TRANSFORMER
 - CTV CABLE TV PEDESTAL
 - UP UTILITY POLE
 - WM WATER METER
 - WV WATER VALVE
 - YI YARD INLET
 - () FIELD MEASUREMENT

30

31
9,349 S.F.



COTTONSEED LANE
50' PUBLIC R/W & UTILITY

SETBACK INFO

FRONT:	20'
REAR:	15'
SIDES:	5'
CORNER SIDE:	15'

NUM	RADIUS	ARC	DELTA	CHORD BRG	CHORD
C1	325.00'	39.68'	6°59'40"	S73°53'15"E	39.65'
C2	25.00'	39.27'	90°00'00"	S32°23'05"E	35.36'
C3	275.00'	29.88'	6°13'35"	N15°43'42"E	29.87'

REFERENCES:

BM 2022 PGS 346-351

IMPERVIOUS SURFACES	S.F.
HOUSE	2,500
WALK & DRIVE	400
PORCH	230
TOTAL	3,130
PERCENT IMPERVIOUS	33.4%



SCALE: 1" = 20'

NOTES

- THIS SURVEY SUBJECT TO ANY FACTS THAT MAY BE DISCLOSED BY A FULL AND ACCURATE TITLE SEARCH.
- THIS MAP MAY NOT BE A CERTIFIED SURVEY AND HAS NOT BEEN REVIEWED BY A LOCAL GOVERNMENT AGENCY FOR COMPLIANCE WITH ANY APPLICABLE LAND DEVELOPMENT REGULATIONS AND HAS NOT BEEN REVIEWED FOR COMPLIANCE WITH RECORDING REQUIREMENTS FOR PLATS.

PLOT PLAN
 PRELIMINARY PLAT- NOT FOR RECORDATION,
 CONVEYANCE OR SALES

REV CODE: 1.FLIP, 2.PLAN, 3.ROTATE, 4.MOVE, 5.SS
 6.SEVERAL OF ABOVE, 7.LAND FEATURE, 8. OTHER

DATE: JAN. 08, 2024

F.B. _____

RWK, PA

ENGINEERING ~ SURVEYING

CORPORATE LICENSE: C-1771
 101 W. MAIN ST., SUITE 202
 GARNER, NC 27529
 PHONE (919) 779-4854
 FAX (919) 779-4056