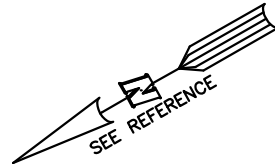


**PLOT PLAN FOR  
 MATTAMY HOMES**  
 65 COTTONSEED LANE  
 LOT 30, PROVIDENCE CREEK PHASE 1  
 HECTORS CREEK AND BLACK RIVER TOWNSHIP, HARNETT COUNTY, NORTH CAROLINA

OPEN SPACE #8



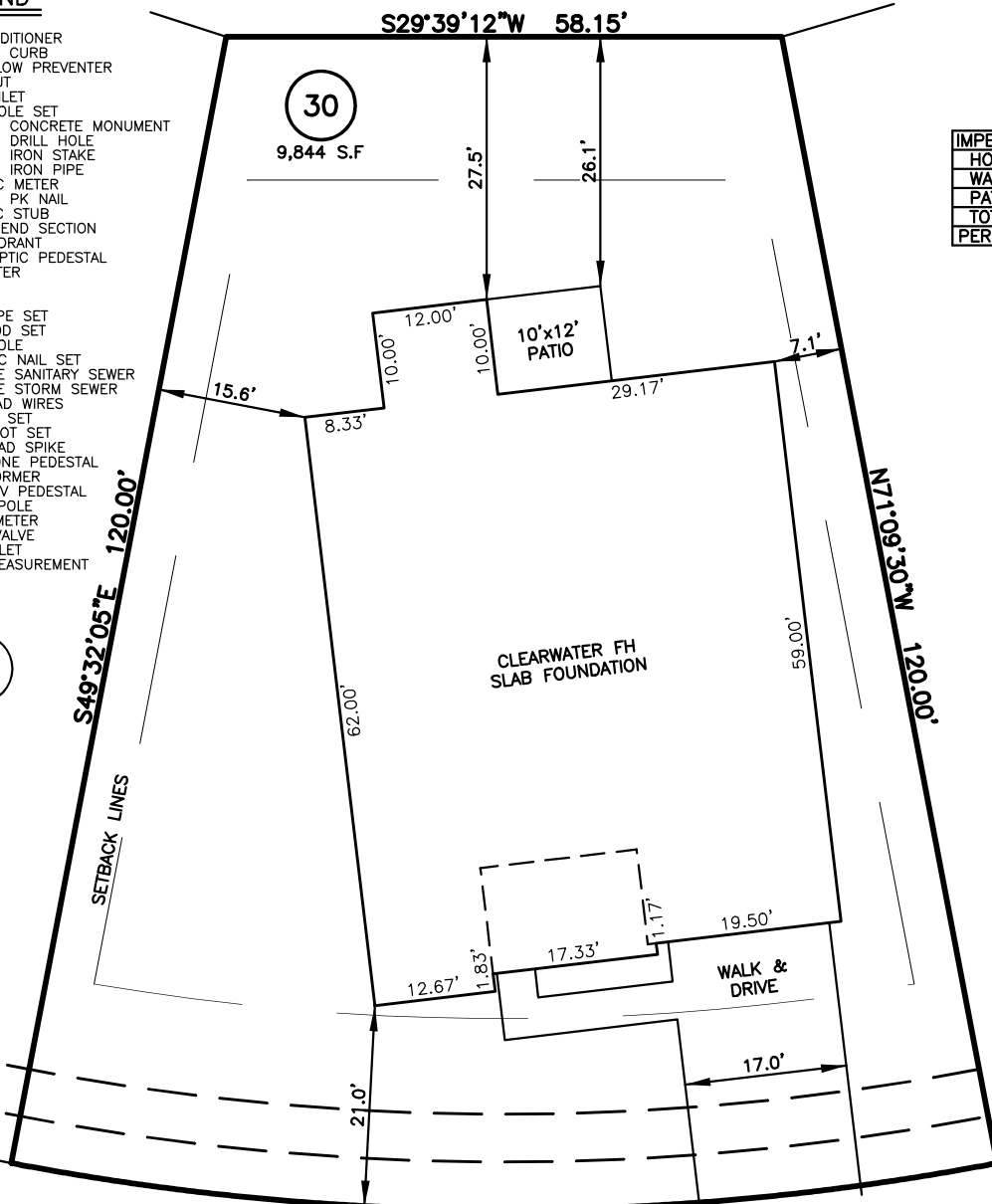
**LEGEND**

- ▲ AIR CONDITIONER
- BC BACK of CURB
- BFP BACK FLOW PREVENTER
- CLEANOUT
- CURB INLET
- DHS DRILL HOLE SET
- ECM EXISTING CONCRETE MONUMENT
- EDH EXISTING DRILL HOLE
- EIS EXISTING IRON STAKE
- EIP EXISTING IRON PIPE
- EM ELECTRIC METER
- EPK EXISTING PK NAIL
- ES ELECTRIC STUB
- FLA FLARED END SECTION
- FHY FIRE HYDRANT
- FOP FIBER OPTIC PEDESTAL
- GM GAS METER
- GUY GUY
- INV. INVERT
- IPR IRON PIPE SET
- IRR IRON ROD SET
- LPO LIGHT POLE
- MNS MAGNETIC NAIL SET
- MNS MANHOLE SANITARY SEWER
- MNS MANHOLE STORM SEWER
- OHV OVERHEAD WIRES
- PKS PK NAIL SET
- PNS POINT NOT SET
- RRS RAIL ROAD SPIKE
- TEL TELEPHONE PEDESTAL
- TRF TRANSFORMER
- CTV CABLE TV PEDESTAL
- UPU UTILITY POLE
- WM WATER METER
- WV WATER VALVE
- YI YARD INLET
- ( ) FIELD MEASUREMENT

IMPERVIOUS SURFACES	S.F.
HOUSE	3,100
WALK & DRIVE	560
PATIO	120
<b>TOTAL</b>	<b>3,780</b>
<b>PERCENT IMPERVIOUS</b>	<b>38.4%</b>

29

31



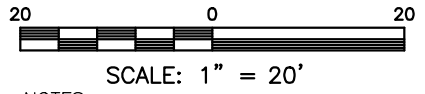
**C1**  
**COTTONSEED LANE**  
 50' PUBLIC R/W & UTILITY

**SETBACK INFO**

- FRONT: \_\_\_\_\_ 20'
- REAR: \_\_\_\_\_ 15'
- SIDES: \_\_\_\_\_ 5'
- CORNER SIDE: \_\_\_\_\_ 15'

NUM	RADIUS	ARC	DELTA	CHORD BRG	CHORD
C1	275.00'	103.79'	21°37'25"	S29°39'12"W	103.17'

**REFERENCES:**  
 BM 2022 PGS 346-351



**NOTES**

1. THIS SURVEY SUBJECT TO ANY FACTS THAT MAY BE DISCLOSED BY A FULL AND ACCURATE TITLE SEARCH.
2. THIS MAP MAY NOT BE A CERTIFIED SURVEY AND HAS NOT BEEN REVIEWED BY A LOCAL GOVERNMENT AGENCY FOR COMPLIANCE WITH ANY APPLICABLE LAND DEVELOPMENT REGULATIONS AND HAS NOT BEEN REVIEWED FOR COMPLIANCE WITH RECORDING REQUIREMENTS FOR PLATS.

**PLOT PLAN**  
 PRELIMINARY PLAT- NOT FOR RECORDATION,  
 CONVEYANCE OR SALES

DATE: JAN. 08, 2024

**RWK, PA**  
**ENGINEERING ~ SURVEYING**  
 CORPORATE LICENSE: C-1771  
 101 W. MAIN ST., SUITE 202  
 GARNER, NC 27529  
 PHONE (919) 779-4854  
 FAX (919) 779-4056

REV CODE: 1.FLIP, 2.PLAN, 3.ROTATE, 4.MOVE, 5.SS  
 6.SEVERAL OF ABOVE, 7.LAND FEATURE, 8. OTHER

F.B. \_\_\_\_\_