

TOPSAIL

LOT 689 MANOR AT LEXINGTON INVENTORY MARKED PLAN



COVER SHEET

DREAM FINDERS HOMES
TOPSAIL

DATE: OCTOBER 13, 2017

REV.: MARCH 30, 2020

DRAWN BY: WG

ENGINEERED BY:

REVIEWED BY:

CS

TOPSAIL REVISION LIST - STRUCTURAL:

- 1.) ADDED JOIST SERIES AND SPACING TO SECOND FLOOR FRAMING AND CRAWL (10-17)
- 2.) REMOVED BEDROOM VAULTS AND BALLOON FRAMING (10-17)
- 3.) CHANGED STANDARD HEADER SIZE TO 2 x 6. CALLED OUT 2 x 10 WHERE NECESSARY (10-17)
- 4.) CHANGED TO (3) PLY GARAGE HEADERS (10-17)
- 5.) CODE UPDATE TO NCRC 2018 (1-19)

TOPSAIL REVISION LIST - ARCHITECTURAL:

CHANGES ON 03-30-2020

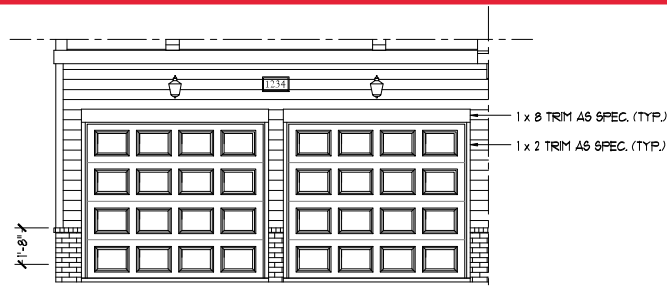
1. CHANGED ALL CORNER BOARDS ON ELEVATIONS FROM 6" TO 4"
2. CHANGED NOTE FOR GARAGE LABEL ON ELEVATIONS
3. REMOVED GRIDS FROM ALL WINDOWS & DOORS ON SIDES AND REAR ELEVATIONS
4. UPDATED ALL COACH LIGHTS ON ELEVATIONS
5. REMOVED DUPLICATE DIMENSIONS AND LABELS FROM ALL ELEVATIONS
6. DIMENSIONED STONE/BRICK WATER TABLE HEIGHT
7. HATCHED 4" ROWLOCK ON WINDOWS IN ELEVATIONS WITH STONE AND BRICK
8. UPDATED STONE HATCH TO CURRENT HATCH
9. ADDED COLUMN DETAILS ON B-1 AND B-4 ELEVATIONS
10. REMOVED HARDWARE ON SHUTTERS ON ALL C ELEVATIONS. CHANGED TO SHOW B&B
11. SEPARATED ALL OPTIONS FROM BASE PLAN TO CORRESPONDING SHEETS
12. ADDED DIAGONAL DIMENSION ON SLAB INTERFACE PLAN
13. ADDED PLUMBING DROPS TO SLAB INTERFACE PLAN
14. ADDED CONDUIT IN KITCHEN OF THE SLAB INTERFACE PLAN
15. CHANGED COLUMN ON PATIO TO 8"x8"
16. CHANGED EXTERIOR WALLS FROM 2x6 TO 2x4 EXCEPT AT SHADED AREAS
19. REMOVED ALL 2x6 NOTES
20. UPDATED ALL INTERIOR ROOM DIMENSIONS
21. ADDED HOSE BIBS TO PLANS
22. UPDATED SQUARE FOOTAGES
23. ADDED SQUARE FOOTAGE WITH FULL BRICK VENEER
24. PATIO CHANGED TO 12'x10'
25. FLIPPED TUB AND REMOVED ACCESS AND NOTE FROM OWNER'S BATH 1
26. ADDED NOTE TO LAUNDRY
27. ADDED OPTIONAL FLOOR OUTLETS
28. REMOVED ALL OUTLETS ON ELECTRICAL PLAN (EXCEPT OPT. FLOOR OUTLETS)
29. REMOVED ALL TV OUTLETS
30. REMOVED ALL PHONE OUTLETS
31. SHOWED ALL CEILING FANS DASHED WITH NEW NOTE
32. ADDED CO2 DETECTORS
33. ADDED NEW ELECTRICAL KEY
34. CHANGED SWING OF SERVICE DOOR (7-8-20)
35. CHANGED LIGHT IN GARAGE FROM KEYLESS TO CEILING MOUNT (7-8-20)
36. CHANGED KITCHEN LIGHT FROM 2 BULB FLUORESCENT TO 3 BULB CEILING MOUNT (7-8-20)
37. CHANGED LIGHT OVER KITCHEN SINK TO 1 BULB CEILING MOUNT (7-8-20)
38. REMOVED LIGHT IN SECONDARY BATH OVER TUB/SHOWER COMB (7-8-20)



FRONT ELEVATION-A-2
SCALE: 1/4" = 1'-0"



SIDE LOAD
GARAGE OPTION
(NOT AVAILABLE WITH OPTIONAL ONE-CAR GARAGE)
SCALE: 1/4" = 1'-0"



DOUBLE GARAGE
DOOR OPTION
SCALE: 1/4" = 1'-0"

1 x 8 TRIM AS SPEC. (TYP.)
1 x 2 TRIM AS SPEC. (TYP.)



FRONT ELEVATION-A-3
SCALE: 1/4" = 1'-0"

BRICK OR STONE
LEDGE AS SPEC. (TYP.)

BRICK OR STONE
LEDGE AS SPEC. (TYP.)

PRICES, PROMOTIONS, INCENTIVES, FEATURES, OPTIONS,
DIMENSIONS AND FINISHES ARE SUBJECT TO CHANGE WITHOUT NOTICE.
DIMENSIONS ARE SUBJECT TO CHANGE WITHOUT NOTICE.
SQUARE FOOTAGE AND DIMENSIONS ARE ESTIMATED AND
MAY VARY IN ACTUAL CONSTRUCTION. ACTUAL POSITION
OF HOUSE ON LOT WILL BE DETERMINED BY THE SITE.
RENDERINGS ARE ARTIST CONCEPTIONS. FLOOR PLANS
ARE THE COPYRIGHTED PROPERTY OF DREAM FINDERS
HOMES. ANY USE, REPRODUCTION, ADAPTATION, OR
DISPLAY OF THE PLANS IS STRICTLY PROHIBITED. SEE NEW
CONTRACT FOR COMPLETE TERMS AND CONDITIONS.
COPYRIGHT © DREAM FINDERS HOMES

DATE: OCTOBER 13, 2017

REV.: MARCH 30, 2020

SCALE: AS NOTED

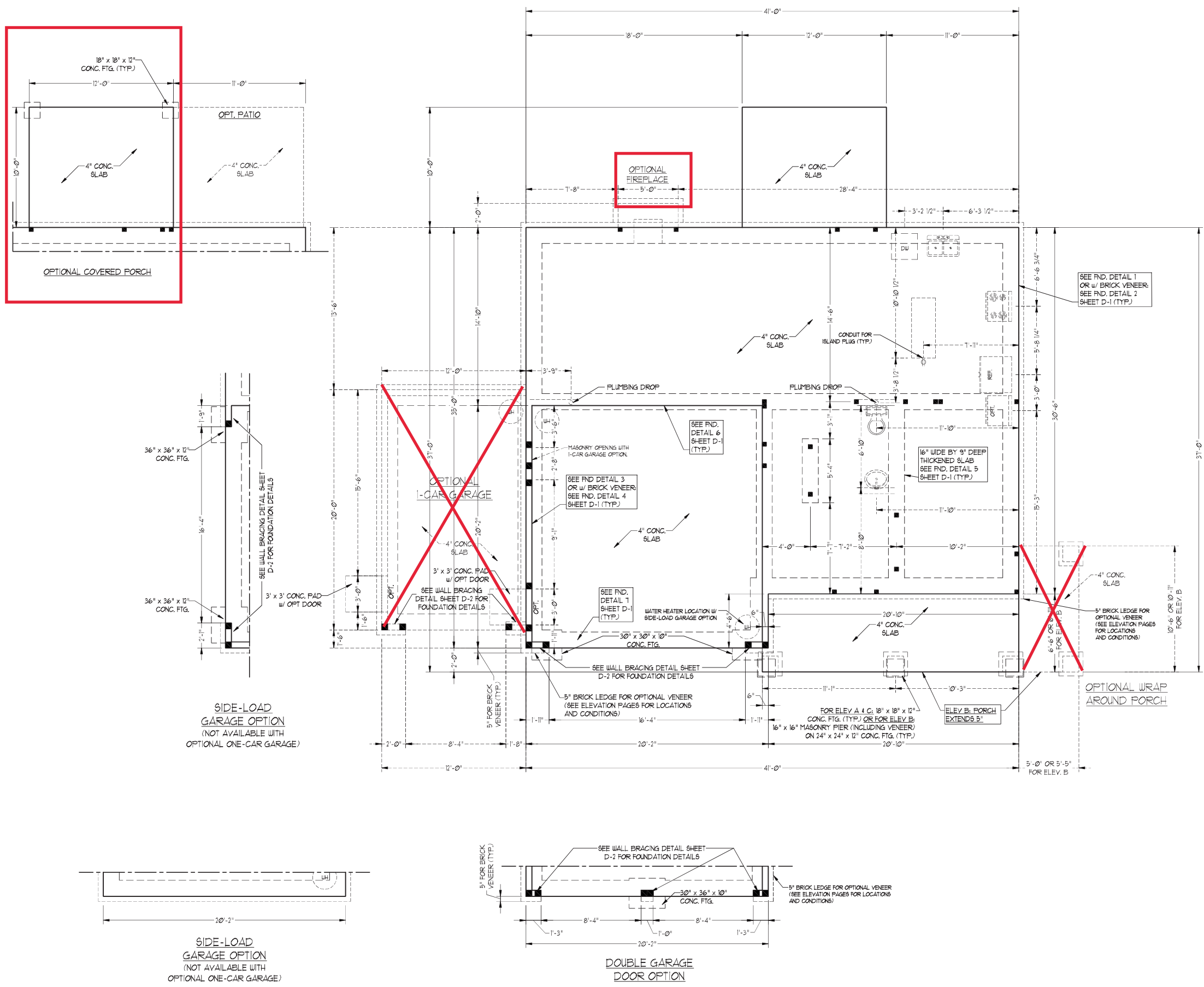
DRAWN BY:

ENGINEERED BY:

REVIEWED BY:

A - 2 & A - 3
ELEVATIONS
BRICK

A-1.1



150 MPH ULTIMATE DESIGN WIND SPEED NOTES FOR LESS THAN 30' MEAN ROOF HEIGHT:

- ENGINEER'S SEAL APPLIES ONLY TO STRUCTURAL COMPONENTS. ENGINEER'S SEAL DOES NOT CERTIFY DIMENSIONAL ACCURACY OR ARCHITECTURAL LAYOUT INCLUDING ROOF SYSTEMS.
- STRUCTURAL DESIGN PER NORTH CAROLINA RESIDENTIAL CODE 2008 EDITION WITH SPECIAL CONSIDERATION TO CHAPTER 45 ("HIGH WIND ZONES" FOR 150 MPH WINDS).
- BUILDER IS TO PROVIDE FRAMING CONNECTIONS AS REQUIRED BY CHAPTER 45 ("HIGH WIND ZONES" FOR 150 MPH WINDS) OF THE NORTH CAROLINA RESIDENTIAL CODE 2008 EDITION.
- FOUNDATION ANCHORAGE TO COMPLY WITH SECTION 4504 OF THE NORTH CAROLINA RESIDENTIAL CODE 2008 EDITION.
- MEAN ROOF HEIGHT IS LESS THAN 30 FEET.
- WALL CLADDING DESIGNED FOR +2.5 PSF AND -31 PSF (+/- INDICATE POSITIVE / NEGATIVE PRESSURE (TYP)).
- ROOF CLADDING DESIGNED FOR +12 PSF AND -28 PSF FOR ROOF PITCHES 1/12 TO 1/12 AND +4 PSF AND -51 PSF FOR ROOF PITCHES 2/12 TO 1/12.
- 1/4" OSB SHEATHING IS REQUIRED ON ALL EXTERIOR WALLS.
- WALLS TO BE BRACED IN ACCORDANCE WITH SECTION R602.10.3 OF THE NORTH CAROLINA RESIDENTIAL CODE 2008 EDITION AND AS NOTED ON PLANS.
- ENERGY EFFICIENCY COMPLIANCE AND INSULATION VALUES OF THE BUILDING TO BE IN ACCORDANCE WITH CHAPTER 11 OF THE NRC, 2008 EDITION.

120 MPH ULTIMATE DESIGN WIND SPEED NOTES FOR LESS THAN 30' MEAN ROOF HEIGHT:

- ENGINEER'S SEAL APPLIES ONLY TO STRUCTURAL COMPONENTS. ENGINEER'S SEAL DOES NOT CERTIFY DIMENSIONAL ACCURACY OR ARCHITECTURAL LAYOUT INCLUDING ROOF SYSTEMS.
- STRUCTURAL DESIGN PER NORTH CAROLINA RESIDENTIAL CODE 2008 EDITION.
- INSTALL 1/2" ANCHOR BOLTS 6'-0" O.C. AND WITHIN 1'-0" FROM END OF EACH CORNER. ANCHOR BOLTS MUST EXTEND A MINIMUM OF 1' INTO MASONRY OR CONCRETE. LOCATE BOLT WITHIN MIDDLE THIRD OF FLATE WIDTH.
- MEAN ROOF HEIGHT IS LESS THAN 30 FEET.
- EXTERIOR WALLS DESIGNED FOR 120 MPH WINDS.
- WALL CLADDING DESIGNED FOR +5.5 PSF AND -20 PSF (+/- INDICATE POSITIVE / NEGATIVE PRESSURE (TYP)).
- ROOF CLADDING DESIGNED FOR +12 PSF AND -18 PSF FOR ROOF PITCHES 1/12 TO 1/12 AND +0 PSF AND -36 PSF FOR ROOF PITCHES 2/12 TO 1/12.
- INSTALL 1/4" OSB SHEATHING ON ALL EXTERIOR WALLS OF ALL STOREYS IN ACCORDANCE WITH SECTION R602.10.3 OF THE NRC, 2008 EDITION. SEE THE WALL BRACING NOTES AND DETAILS SHEET FOR MORE INFORMATION.
- ENERGY EFFICIENCY COMPLIANCE AND INSULATION VALUES OF THE BUILDING TO BE IN ACCORDANCE WITH CHAPTER 11 OF THE NRC, 2008 EDITION.
- REFER TO NOTES AND DETAIL SHEETS FOR ADDITIONAL STRUCTURAL INFORMATION.

J.S. THOMPSON ENGINEERING, INC
 606 WADE AVE., SUITE 104 RALEIGH, NC 27605
 PHONE: (919) 789-9919 FAX: (919) 789-9921
 N.C. LICENSE NO.: C-1733

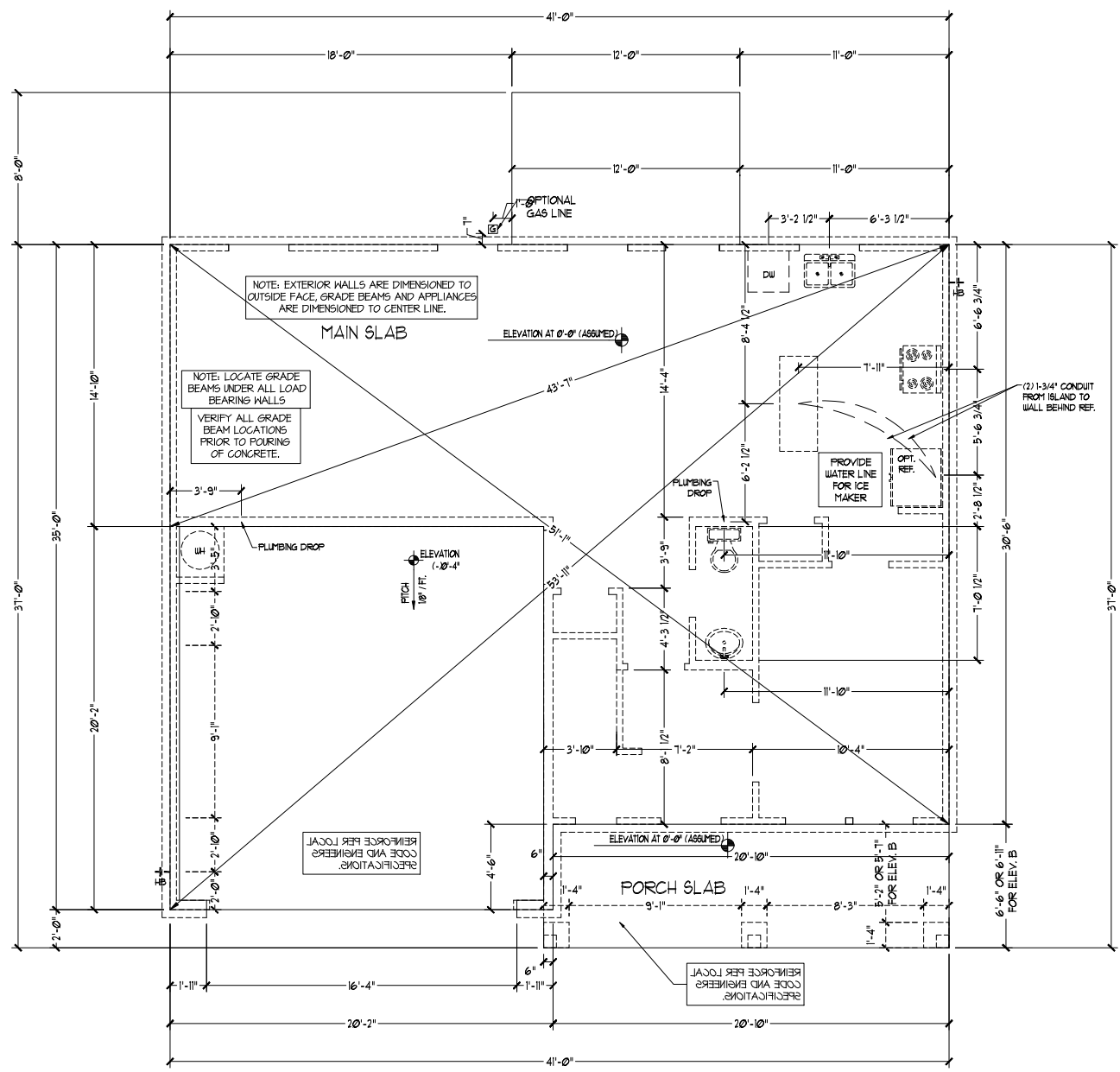
TOPSAIL H&H HOMES

DATE: NOVEMBER 2, 2020
 SCALE: 1/4" = 1'-0"
 DRAWN BY: H&H HOMES
 ENGINEERED BY: WFB



SHEET 2 OF 8
S-1b
 MONO SLAB FOUNDATION PLAN

11/2/2020



FOUNDATION PLAN



PRICES, PROMOTIONS, INCENTIVES, FEATURES, OPTIONS, AND FINANCING ARE SUBJECT TO CHANGE WITHOUT NOTICE. DIMENSIONS ARE SUBJECT TO CHANGE WITHOUT NOTICE. SQUARE FOOTAGE AND DIMENSIONS ARE ESTIMATED AND MAY VARY IN ACTUAL CONSTRUCTION. ACTUAL POSITION OF HOUSE ON LOT WILL BE DETERMINED BY THE SITE SURVEY. THIS PLAN IS AN ARTIST'S CONCEPTION. FLOOR PLANS ARE THE COPYRIGHTED PROPERTY OF DREAM FINDERS HOMES. ANY USE, REPRODUCTION, ADAPTATION, OR DISPLAY OF THE PLANS IS STRICTLY PROHIBITED. SEE NEW CONSTRUCTION CONTRACT FOR COMPLETE TERMS AND CONDITIONS. COPYRIGHT © DREAM FINDERS HOMES

DREAM FINDERS HOMES
TOPSAIL

DATE: OCTOBER 13, 2017
 REV.: MARCH 30, 2020
 SCALE: 1/4" = 1'-0"
 DRAWN BY:
 ENGINEERED BY:
 REVIEWED BY:

SQUARE FOOTAGE	
1st FLOOR:	942 SQ. FT.
2nd FLOOR:	1504 SQ. FT.
TOTAL:	2346 SQ. FT.
GARAGE:	395 SQ. FT.
FRONT PORCH (A & C ELEVATIONS):	136 SQ. FT.
FRONT PORCH (B ELEVATIONS):	145 SQ. FT.
REAR COVERED PORCH:	120 SQ. FT.
1st FLOOR OPTIONS	
OPTIONAL FIREPLACE:	10 SQ. FT.
UNHEATED OPTIONS	
OPT 1-CAR GARAGE:	240 SQ. FT.
OPT 1'-0" X 10'-0" PORCH:	100 SQ. FT.
OPT WRAP AROUND PORCH (ELEV. A/C):	53 SQ. FT.
OPT WRAP AROUND PORCH (ELEV. B):	59 SQ. FT.

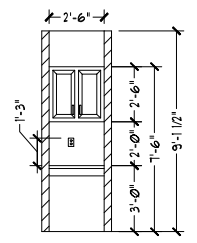
SQUARE FOOTAGE W/ FULL BRICK VENEER	
1st FLOOR:	988 SQ. FT.
2nd FLOOR:	1375 SQ. FT.
TOTAL:	2363 SQ. FT.
GARAGE:	418 SQ. FT.
FRONT PORCH (A & C ELEVATIONS):	139 SQ. FT.
FRONT PORCH (B ELEVATIONS):	148 SQ. FT.
REAR COVERED PORCH:	120 SQ. FT.
1st FLOOR OPTIONS	
OPTIONAL FIREPLACE:	14 SQ. FT.
UNHEATED OPTIONS	
OPT 1-CAR GARAGE:	259 SQ. FT.
OPT 1'-0" X 10'-0" PORCH:	100 SQ. FT.
OPT WRAP AROUND PORCH (ELEV. A/C):	53 SQ. FT.
OPT WRAP AROUND PORCH (ELEV. B):	59 SQ. FT.

NOTE: ALL EXTERIOR WALLS AND ATTIC WALLS ARE TO BE 2 x 4 @ 16" O.C. (UNO.). ALL INTERIOR LOAD BEARING WALLS ARE TO BE 2 x 4 @ 16" O.C. (UNO.) AND NON-LOAD BEARING INTERIOR WALLS ARE TO BE 2 x 4 @ 24" O.C. (UNO.).

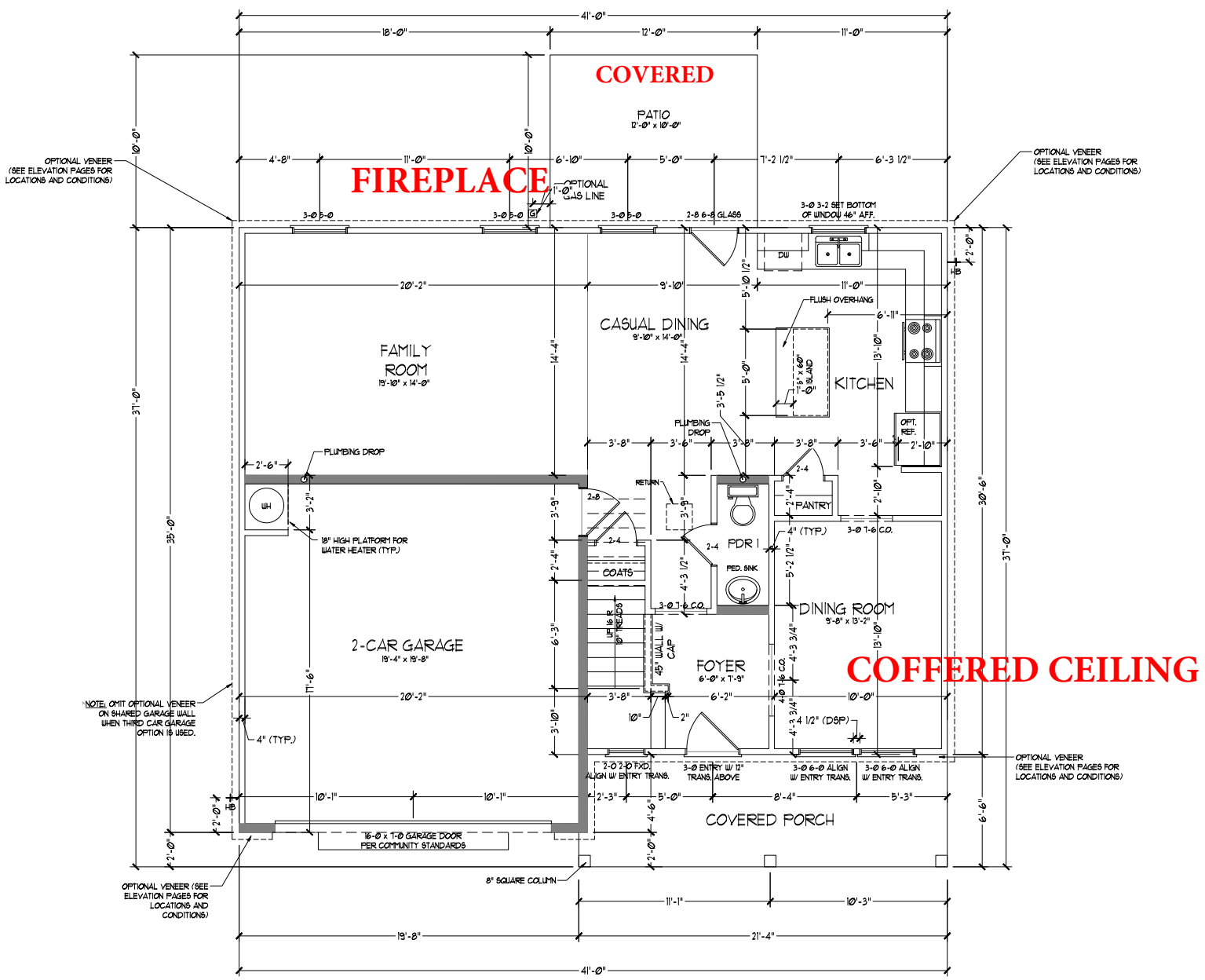
2x6 WALL

* SHADED WALLS ARE TO BE 2 x 6 @ 16" O.C. (LOAD BEARING) OR 2 x 6 @ 24" O.C. (NON-LOAD BEARING) REGARDLESS OF EXTERIOR WALL CONDITION

* PROVIDE MINIMUM INSULATION IN CEILINGS AND WALLS PER SECTION N 1102.1



VALET SECTION



FIRST FLOOR PLAN (A1)

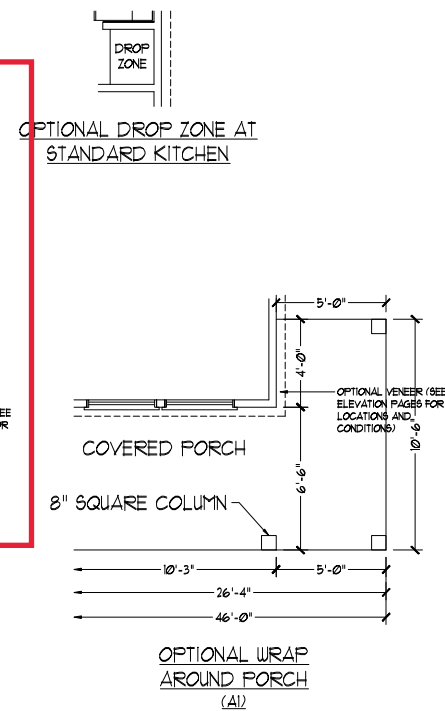
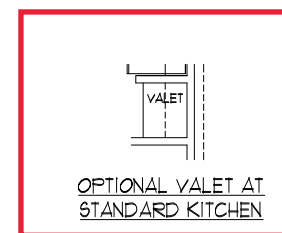
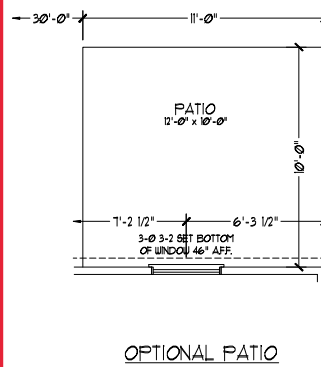
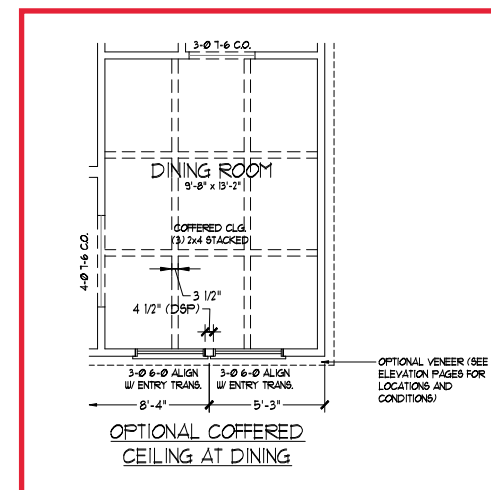
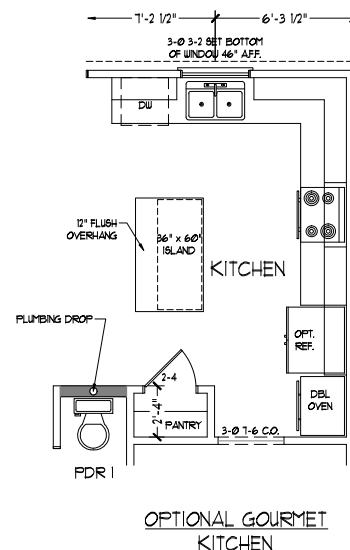
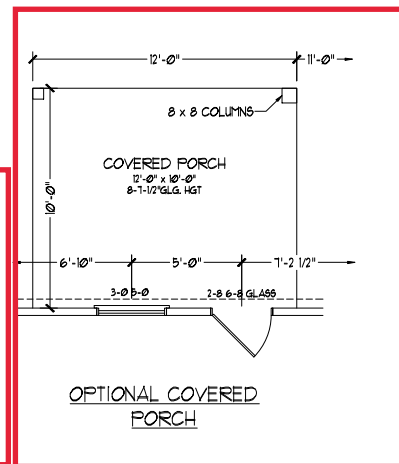
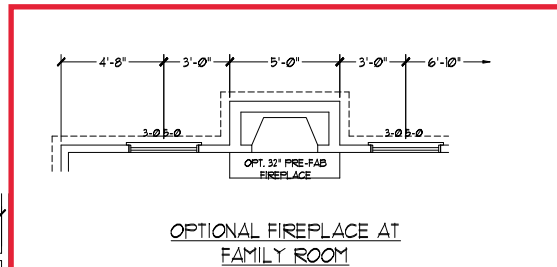
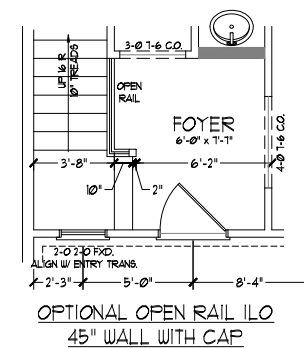
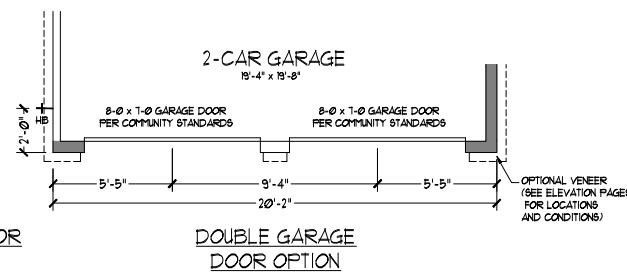
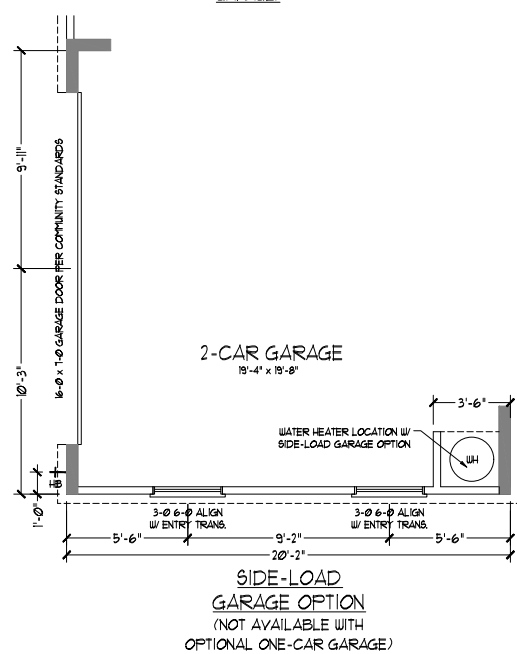
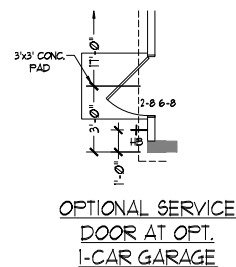
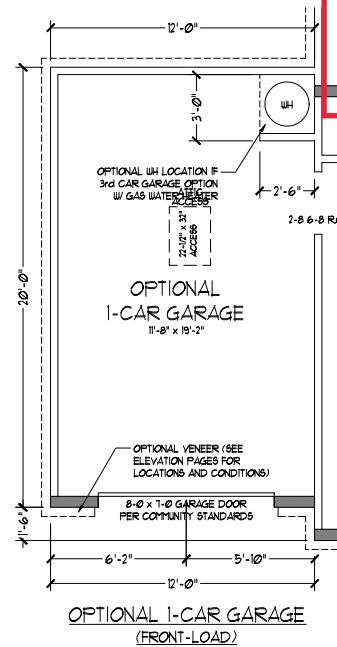
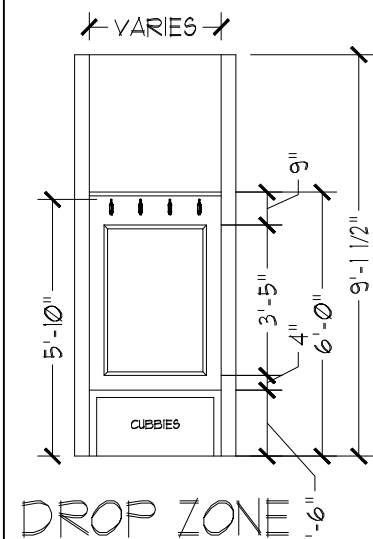
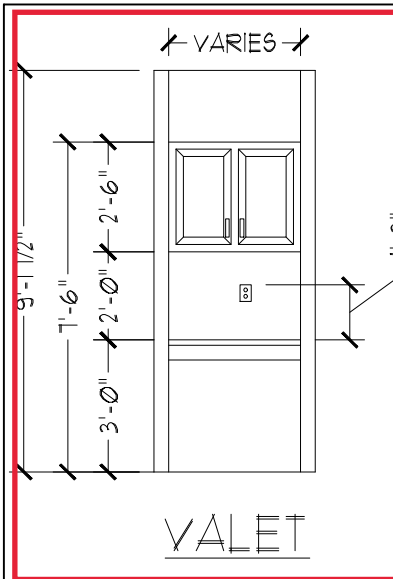


PRICES, PROMOTIONS, INCENTIVES, FEATURES, OPTIONS, DIMENSIONS ARE SUBJECT TO CHANGE WITHOUT NOTICE. SQUARE FOOTAGE AND DIMENSIONS ARE ESTIMATED AND MAY VARY IN ACTUAL CONSTRUCTION. ACTUAL POSITION OF HOUSE ON LOT WILL BE DETERMINED BY THE SITE. RENDERINGS ARE ARTIST CONCEPTIONS. FLOOR PLANS ARE THE COPYRIGHTED PROPERTY OF DREAM FINDERS HOMES. ANY USE, REPRODUCTION, ADAPTATION, OR DISPLAY OF THE PLANS IS STRICTLY PROHIBITED. SEE NEW CONSTRUCTION DETAILS. COPYRIGHT © DREAM FINDERS HOMES

DREAM FINDERS HOMES
TOPSAIL

DATE: OCTOBER 13, 2017
REV.: MARCH 30, 2020
SCALE: 1/4"=1'-0"
DRAWN BY:
ENGINEERED BY:
REVIEWED BY:

FIRST FLOOR PLAN
A-5

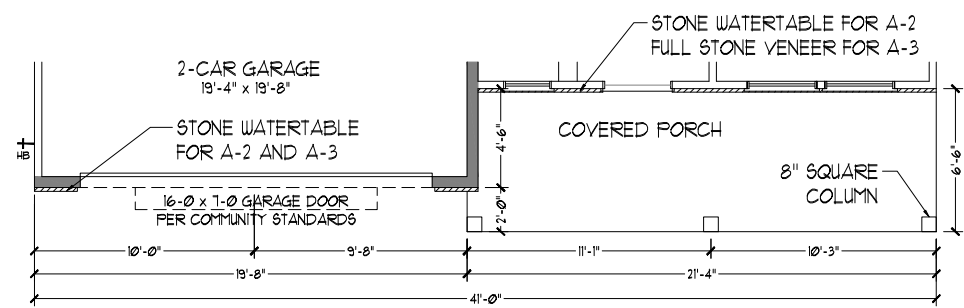


PRICES, PROMOTIONS, INCENTIVES, FEATURES, OPTIONS, DIMENSIONS ARE SUBJECT TO CHANGE WITHOUT NOTICE. SQUARE FOOTAGE AND DIMENSIONS ARE ESTIMATED AND MAY VARY IN ACTUAL CONSTRUCTION. ACTUAL POSITION OF HOUSE ON LOT WILL BE DETERMINED BY THE SITE. RENDERINGS ARE ARTIST CONCEPTIONS. FLOOR PLANS ARE THE COPYRIGHTED PROPERTY OF DREAM FINDERS HOMES. ANY USE, REPRODUCTION, ADAPTATION, OR DISPLAY OF THE PLANS IS STRICTLY PROHIBITED. SEE NEW CONSTRUCTION DETAILS. COPYRIGHT © DREAM FINDERS HOMES

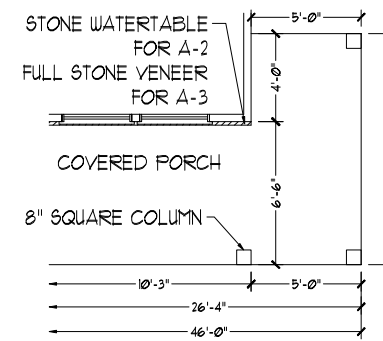
DREAM FINDERS HOMES
TOPSAIL

DATE: OCTOBER 13, 2017
REV.: MARCH 30, 2020
SCALE: 1/4"=1'-0"
DRAWN BY:
ENGINEERED BY:
REVIEWED BY:
FIRST FLOOR
PLAN OPTIONS

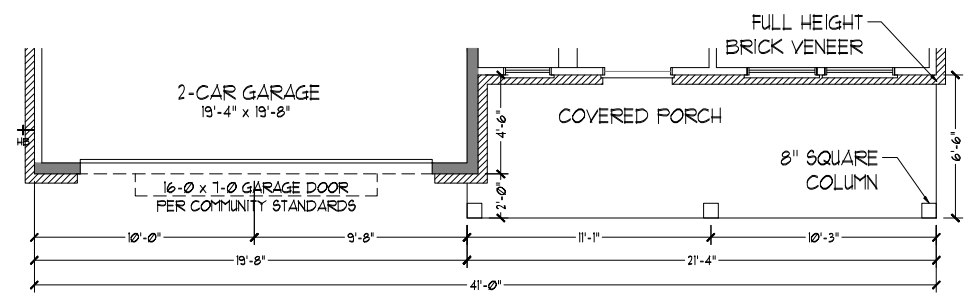
FIRST FLOOR PLAN
(A2 & A3)



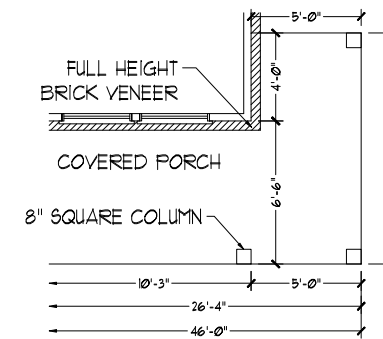
OPTIONAL WRAP
AROUND PORCH
(A2 & A3)



FIRST FLOOR PLAN
(A4)



OPTIONAL WRAP
AROUND PORCH
(A4)



PRICES, PROMOTIONS, INCENTIVES, FEATURES, OPTIONS, FINISHES, AND DIMENSIONS ARE SUBJECT TO CHANGE WITHOUT NOTICE. SQUARE FOOTAGE AND DIMENSIONS ARE ESTIMATED AND MAY VARY IN ACTUAL CONSTRUCTION. ACTUAL POSITION OF HOUSE ON LOT WILL BE DETERMINED BY THE SITE. RENDERINGS ARE ARTIST CONCEPTIONS. FLOOR PLANS ARE THE COPYRIGHTED PROPERTY OF DREAM FINDERS HOMES. ANY USE, REPRODUCTION, ADAPTATION, OR DISPLAY OF THE PLANS IS STRICTLY PROHIBITED. SEE NEW CONSTRUCTION DETAILS. COPYRIGHT © DREAM FINDERS HOMES

DREAM FINDERS HOMES
TOPSAIL

DATE: OCTOBER 13, 2017
REV: MARCH 30, 2020
SCALE: 1/4" = 1'-0"
DRAWN BY:
ENGINEERED BY:
REVIEWED BY:

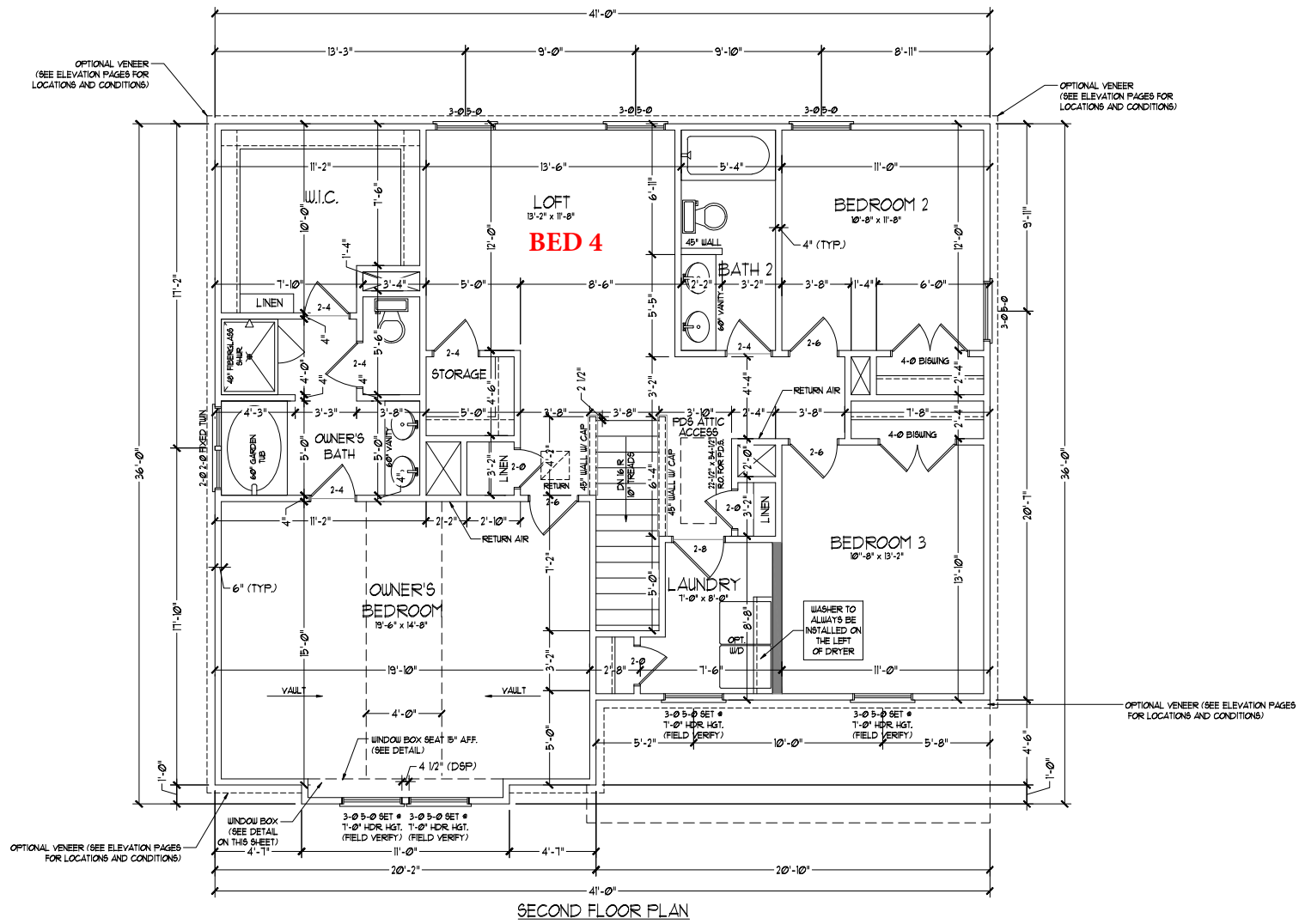
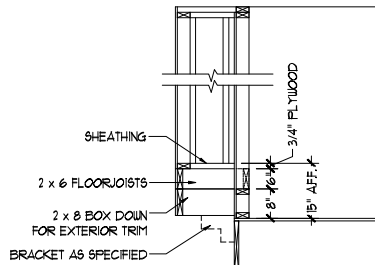
FIRST FLOOR
PLAN
A-5.2

NOTE: ALL EXTERIOR WALLS AND ATTIC WALLS ARE TO BE 2 x 4 @ 16" O.C. (UND.). ALL INTERIOR LOAD BEARING WALLS ARE TO BE 2 x 4 @ 16" O.C. (UND.) AND NON-LOAD BEARING INTERIOR WALLS ARE TO BE 2 x 4 @ 24" O.C. (UND.)

2x6 WALL

* SHADED WALLS ARE TO BE 2 x 6 @ 16" O.C. (LOAD BEARING) OR 2 x 6 @ 24" O.C. (NON-LOAD BEARING) REGARDLESS OF EXTERIOR WALL CONDITION

* PROVIDE MINIMUM INSULATION IN CEILINGS AND WALLS PER SECTION N 1102.1



PRICES, PROMOTIONS, INCENTIVES, FEATURES, OPTIONS, AND FINISHES ARE SUBJECT TO CHANGE WITHOUT NOTICE. DIMENSIONS ARE SUBJECT TO CHANGE WITHOUT NOTICE. SQUARE FOOTAGE AND DIMENSIONS ARE ESTIMATED AND MAY VARY IN ACTUAL CONSTRUCTION. ACTUAL POSITION OF HOUSE ON LOT WILL BE DETERMINED BY THE SITE. RENDERINGS ARE ARTIST CONCEPTIONS. FLOOR PLANS ARE THE COPYRIGHTED PROPERTY OF DREAM FINDERS HOMES. ANY USE, REPRODUCTION, ADAPTATION, OR DISPLAY OF THE PLANS IS STRICTLY PROHIBITED. SEE NEW CONSTRUCTION DETAILS. COPYRIGHT © DREAM FINDERS HOMES

DREAM FINDERS HOMES
TOPSAIL

DATE: OCTOBER 13, 2017

REV.: MARCH 30, 2020

SCALE: 1/4" = 1'-0"

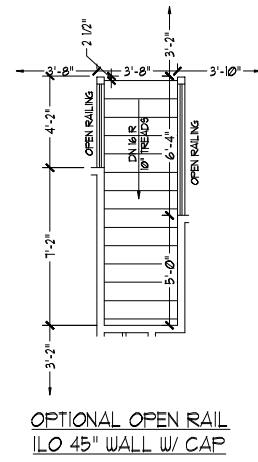
DRAWN BY:

ENGINEERED BY:

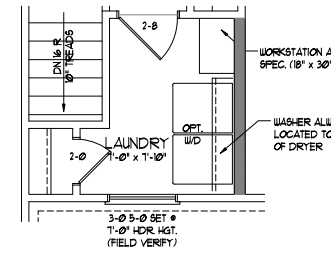
REVIEWED BY:

SECOND FLOOR
PLAN

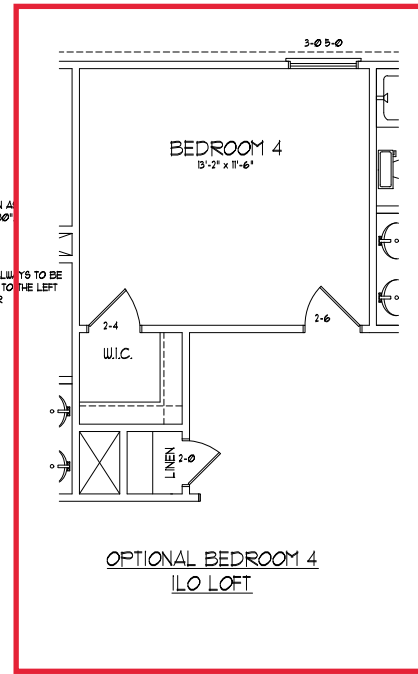
A-6



OPTIONAL OPEN RAIL
ILO 45" WALL W/ CAP



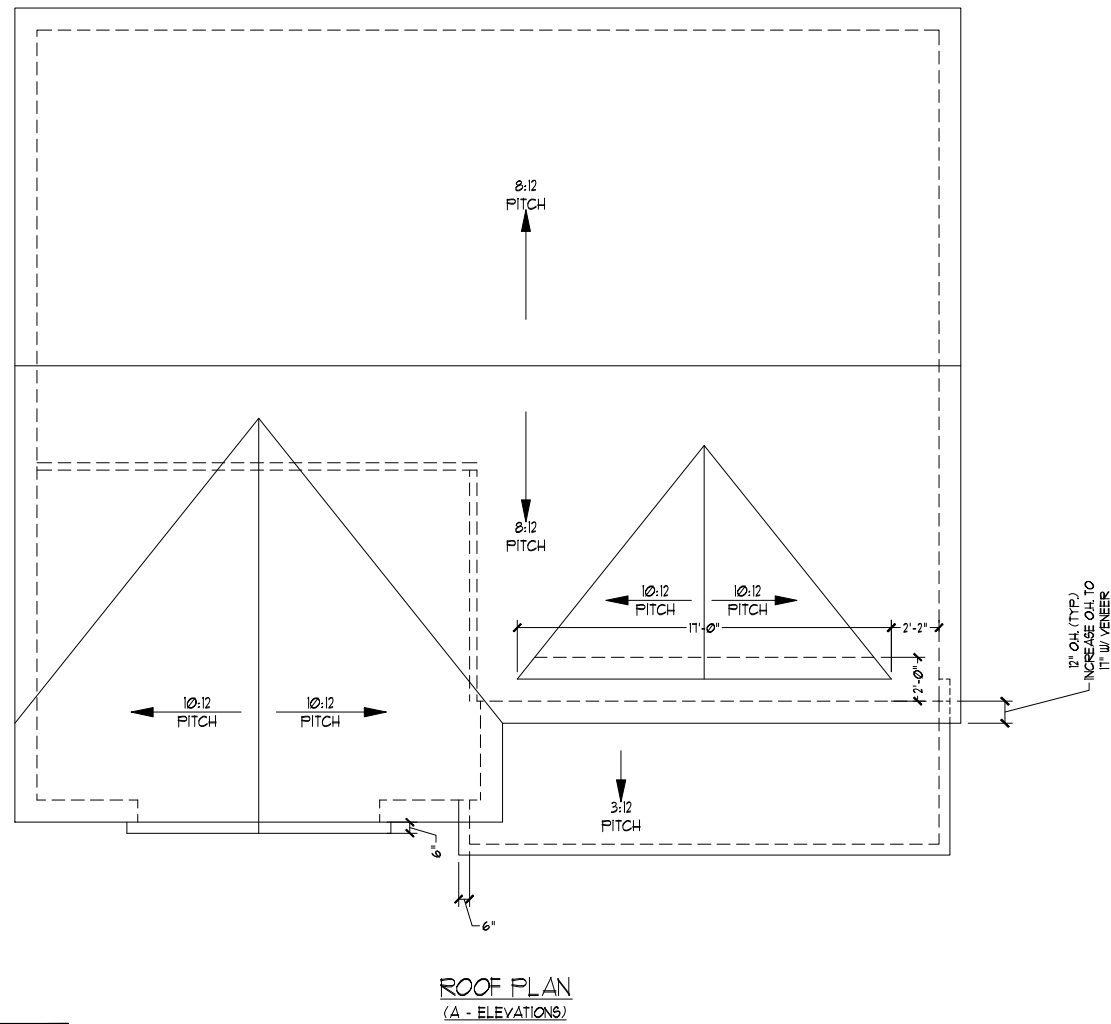
OPTIONAL WORKSTATION
AT LAUNDRY



OPTIONAL WINDOW AT
BEDROOM 4

PRICES, PROMOTIONS, INCENTIVES, FEATURES, OPTIONS, FINISHES AND MATERIALS ARE SUBJECT TO CHANGE WITHOUT NOTICE. DIMENSIONS ARE SUBJECT TO CHANGE WITHOUT NOTICE. SQUARE FOOTAGE AND DIMENSIONS ARE ESTIMATED AND MAY VARY IN ACTUAL CONSTRUCTION. ACTUAL POSITION OF HOUSE ON LOT WILL BE DETERMINED BY THE SITE. RENDERINGS ARE ARTIST CONCEPTIONS. FLOOR PLANS ARE THE COPYRIGHTED PROPERTY OF DREAM FINDERS HOMES. ANY USE, REPRODUCTION, ADAPTATION, OR DISPLAY OF THE PLANS IS STRICTLY PROHIBITED. SEE NEW CONSTRUCTION DETAILS. COPYRIGHT © DREAM FINDERS HOMES

DATE: OCTOBER 13, 2017
REV.: MARCH 30, 2020
SCALE: 1/4"=1'-0"
DRAWN BY:
ENGINEERED BY:
REVIEWED BY:



TOTAL UNDER ROOF AREA: 1,304 SQ.FT.
 VENTING AREA REQUIRED: 1304 SQ. FT. / 300 = 4.35 SQ.FT.
 TOTAL REQUIREMENTS: LOWER: 2.17 UPPER: 2.17

LOWER AREA VENTING

SOFFIT VENT	SIZE:	PER UNIT:	# UNITS:	PROVIDED:
	-	.041 SF/LF	60'-0"	2.5
LOWER AREA VENTING PROVIDED:				-

UPPER AREA VENTING

RIDGE VENT	SIZE:	PER UNIT:	# UNITS:	PROVIDED:
	-	.125 SF/LF	60'-0"	7.5
UPPER AREA VENTING PROVIDED:				-

TOTAL AREA PROVIDED			
SOFFIT AND RIDGE VENT			10



PRICES, PROMOTIONS, INCENTIVES, FEATURES, OPTIONS, FINISHES, AND DIMENSIONS ARE SUBJECT TO CHANGE WITHOUT NOTICE. SQUARE FOOTAGE AND DIMENSIONS ARE ESTIMATED AND MAY VARY IN ACTUAL CONSTRUCTION. ACTUAL POSITION OF HOUSE ON LOT WILL BE DETERMINED BY THE SITE. DIMENSIONS ARE ARTIST CONCEPTIONS. FLOOR PLANS ARE THE COPYRIGHTED PROPERTY OF DREAM FINDERS HOMES. ANY USE, REPRODUCTION, ADAPTATION, OR DISPLAY OF THE PLANS IS STRICTLY PROHIBITED. SEE NEW CONSTRUCTION DETAILS.
 COPYRIGHT © DREAM FINDERS HOMES

DREAM FINDERS HOMES
TOPSAIL

DATE: OCTOBER 13, 2017

REV.: MARCH 30, 2020

SCALE: 1/4"=1'-0"

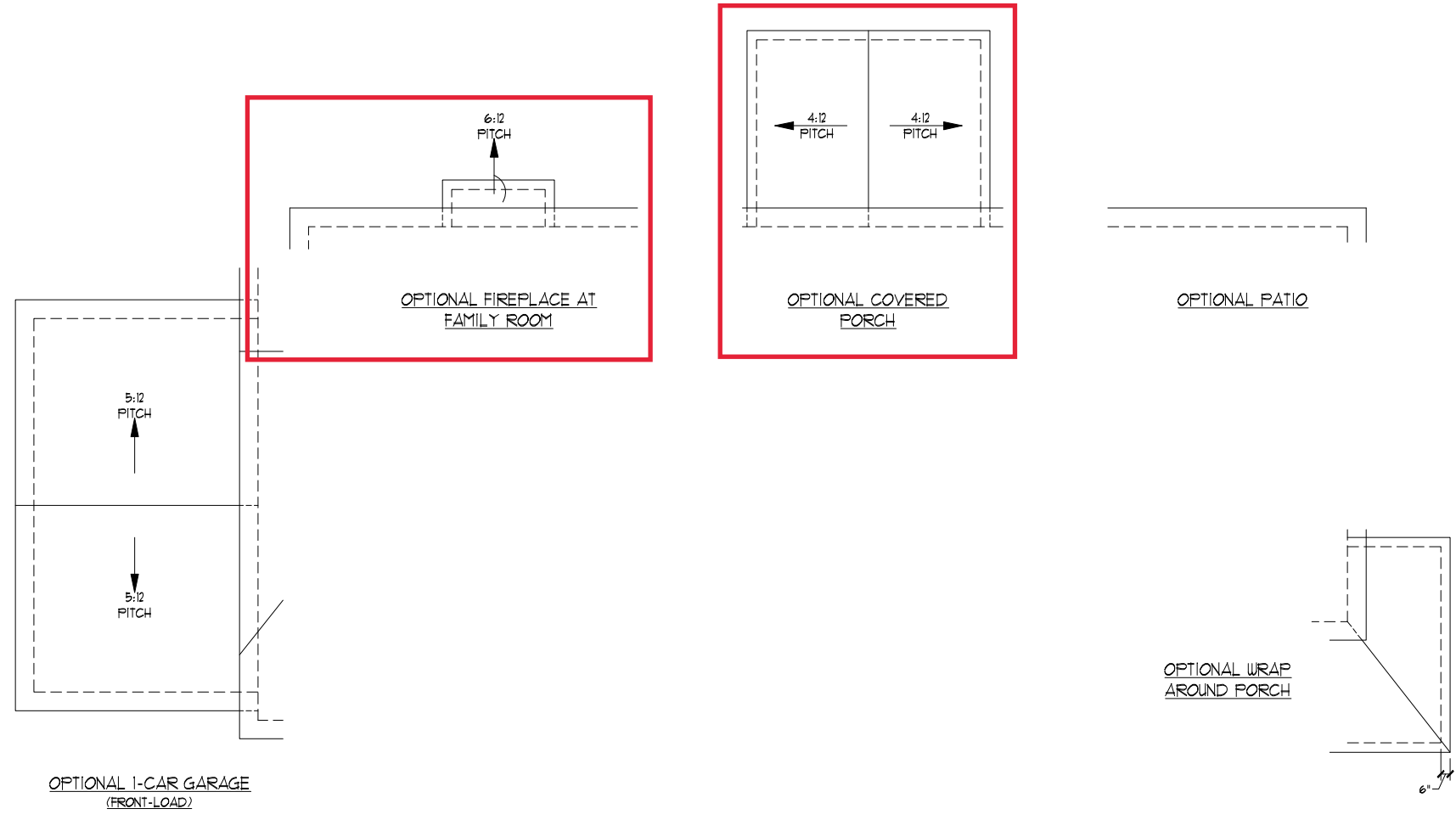
DRAWN BY:

ENGINEERED BY:

REVIEWED BY:

ROOF PLAN
ELEVATION - A

A-7



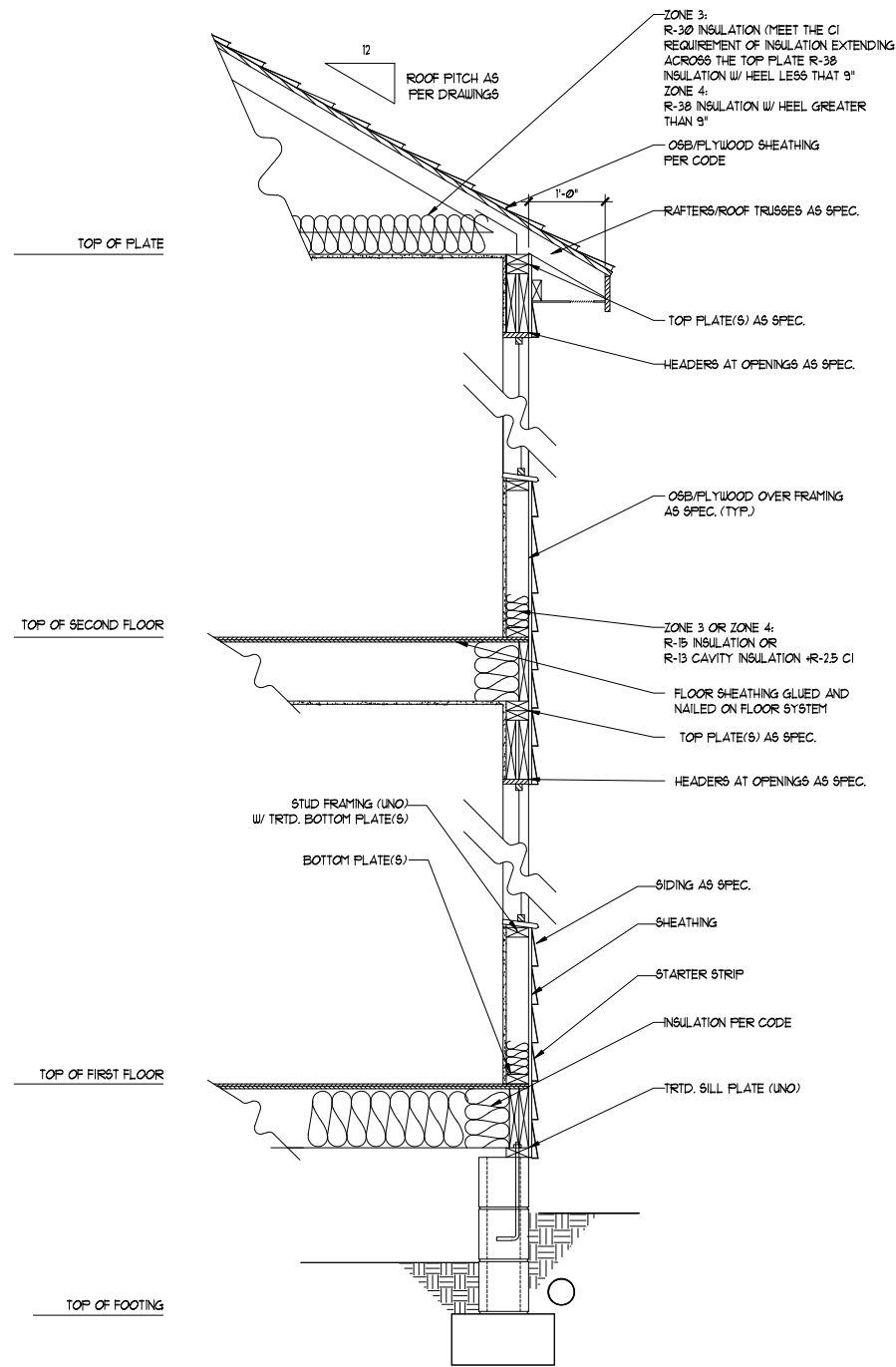
PRICES, PROMOTIONS, INCENTIVES, FEATURES, OPTIONS, DIMENSIONS AND FINISHES ARE SUBJECT TO CHANGE WITHOUT NOTICE. SQUARE FOOTAGE AND DIMENSIONS ARE ESTIMATED AND MAY VARY IN ACTUAL CONSTRUCTION. ACTUAL POSITION OF HOUSE ON LOT WILL BE DETERMINED BY THE SITE SURVEY. RENDERINGS ARE ARTIST CONCEPTIONS. FLOOR PLANS ARE THE COPYRIGHTED PROPERTY OF DREAM FINDERS HOMES. ANY USE, REPRODUCTION, ADAPTATION, OR DISPLAY OF THE PLANS IS STRICTLY PROHIBITED. SEE NEW CONSTRUCTION DETAILS. COPYRIGHT © DREAM FINDERS HOMES

DREAM FINDERS HOMES
TOPSAIL

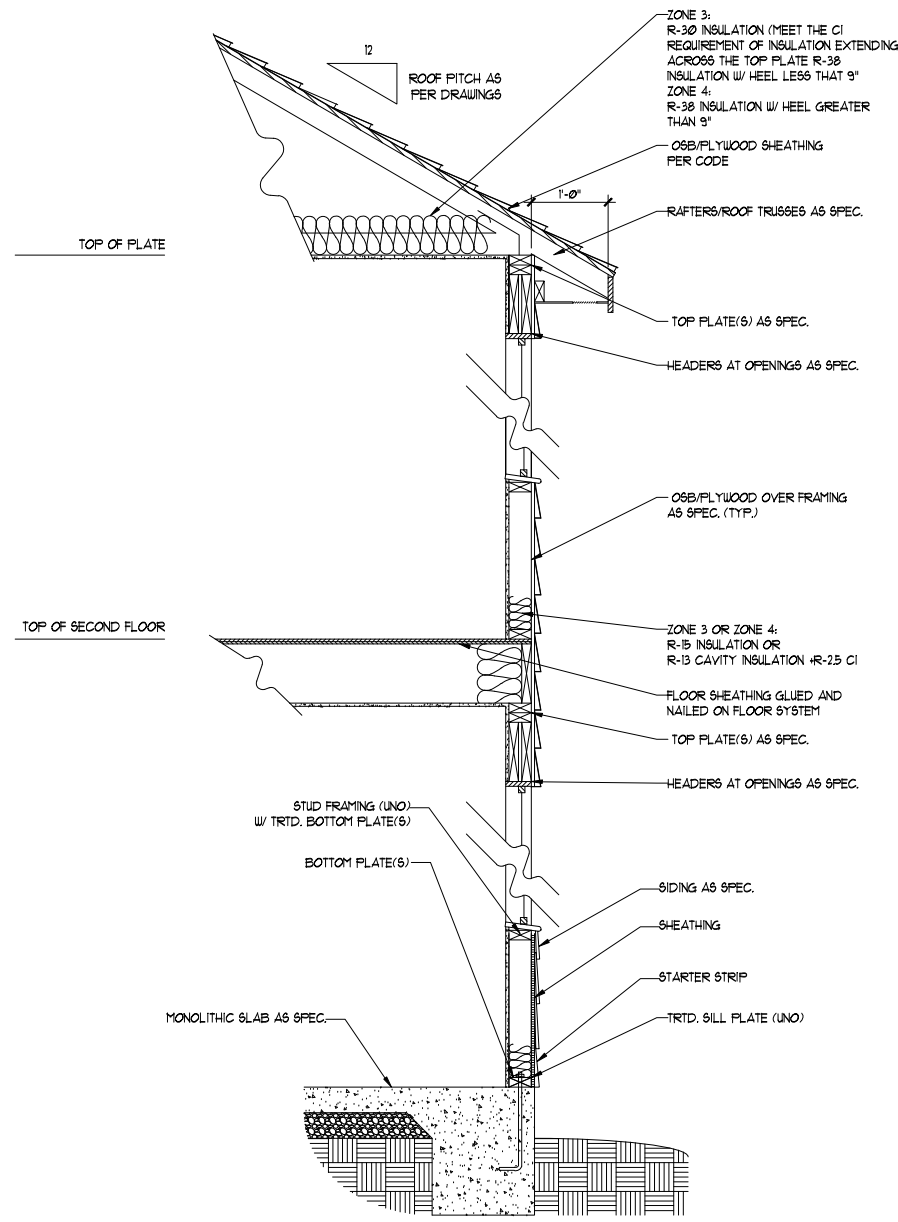
DATE: OCTOBER 13, 2017
REV.: MARCH 30, 2020
SCALE: 1/4"=1'-0"
DRAWN BY:
ENGINEERED BY:
REVIEWED BY:

ROOF PLAN
ELEVATION - A
OPTIONS

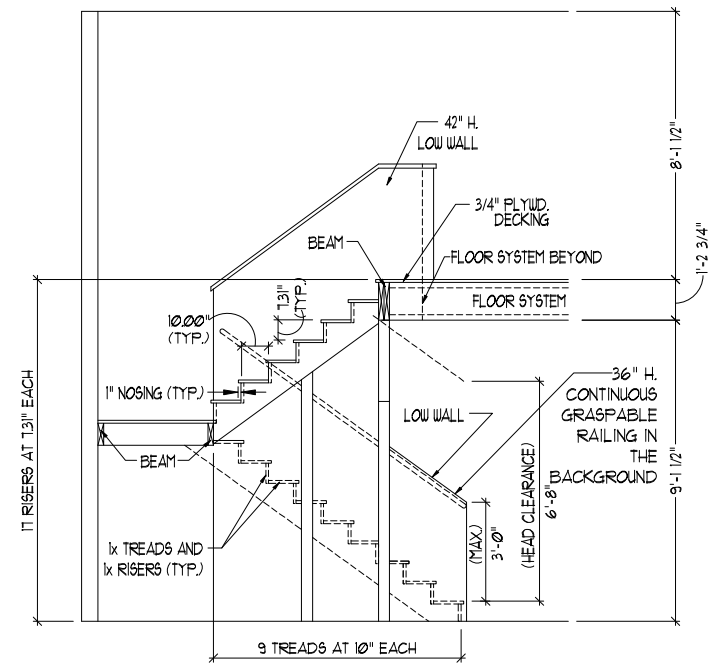
A-7.1



WALL SECTION W/ CRAWL SPACE
W/ STD. SIDING SHOWN (NTS)



WALL SECTION W/ SLAB
W/ STD. SIDING SHOWN (NTS)



TYPICAL STAIR DETAIL
(NTS)

* * * * *
STAIR NOTES:
* * * * *

RAILING:
BALUSTERS SHALL BE SPACED SO THAT A 4" SPHERE CANNOT PASS THROUGH.

THE TRIANGULAR OPENINGS FORMED BY THE RISER, TREAD AND BOTTOM RAIL OF A GUARD AT THE OPEN SIDE OF A STAIRWAY ARE PERMITTED TO BE A SUCH A SIZE THAT A SPHERE OF 6 INCHES CANNOT PASS THROUGH.

OPENINGS FOR REQUIRED GUARDS ON THE SIDES OF STAIR TREADS SHALL NOT ALLOW A SPHERE 4 3/8 INCHES TO PASS THROUGH.

HANDRAILS:
HANDRAILS FOR STAIRWAYS SHALL BE CONTINUOUS FOR THE FULL LENGTH OF THE FLIGHT, FROM A POINT DIRECTLY ABOVE THE TOP RISER OF THE FLIGHT TO A POINT DIRECTLY ABOVE THE LOWEST RISER. HANDRAIL ENDS SHALL BE RETURNED OR SHALL TERMINATE IN NEWEL POSTS OR SAFETY TERMINALS. HANDRAILS ADJACENT TO A WALL SHALL HAVE A SPACE OF NOT LESS THAN 1-1/2 INCH BETWEEN THE WALL AND HANDRAILS.

CONTINUOUS GRASPABLE HANDRAIL MUST MEET TYPE ONE OR TYPE TWO CRITERIA

* * * * *



PRICES, PROMOTIONS, INCENTIVES, FEATURES, OPTIONS, DIMENSIONS ARE SUBJECT TO CHANGE WITHOUT NOTICE. SQUARE FOOTAGE AND DIMENSIONS ARE ESTIMATED AND MAY VARY IN ACTUAL CONSTRUCTION. ACTUAL POSITION OF HOUSE ON LOT WILL BE DETERMINED BY THE SITE. RENDERINGS ARE ARTIST CONCEPTIONS. FLOOR PLANS ARE THE COPYRIGHTED PROPERTY OF DREAM FINDERS HOMES. ANY USE, REPRODUCTION, ADAPTATION, OR DISPLAY OF THE PLANS IS STRICTLY PROHIBITED. SEE NEW CONSTRUCTION DETAILS. COPYRIGHT © DREAM FINDERS HOMES

DREAM FINDERS HOMES
TOPSAIL

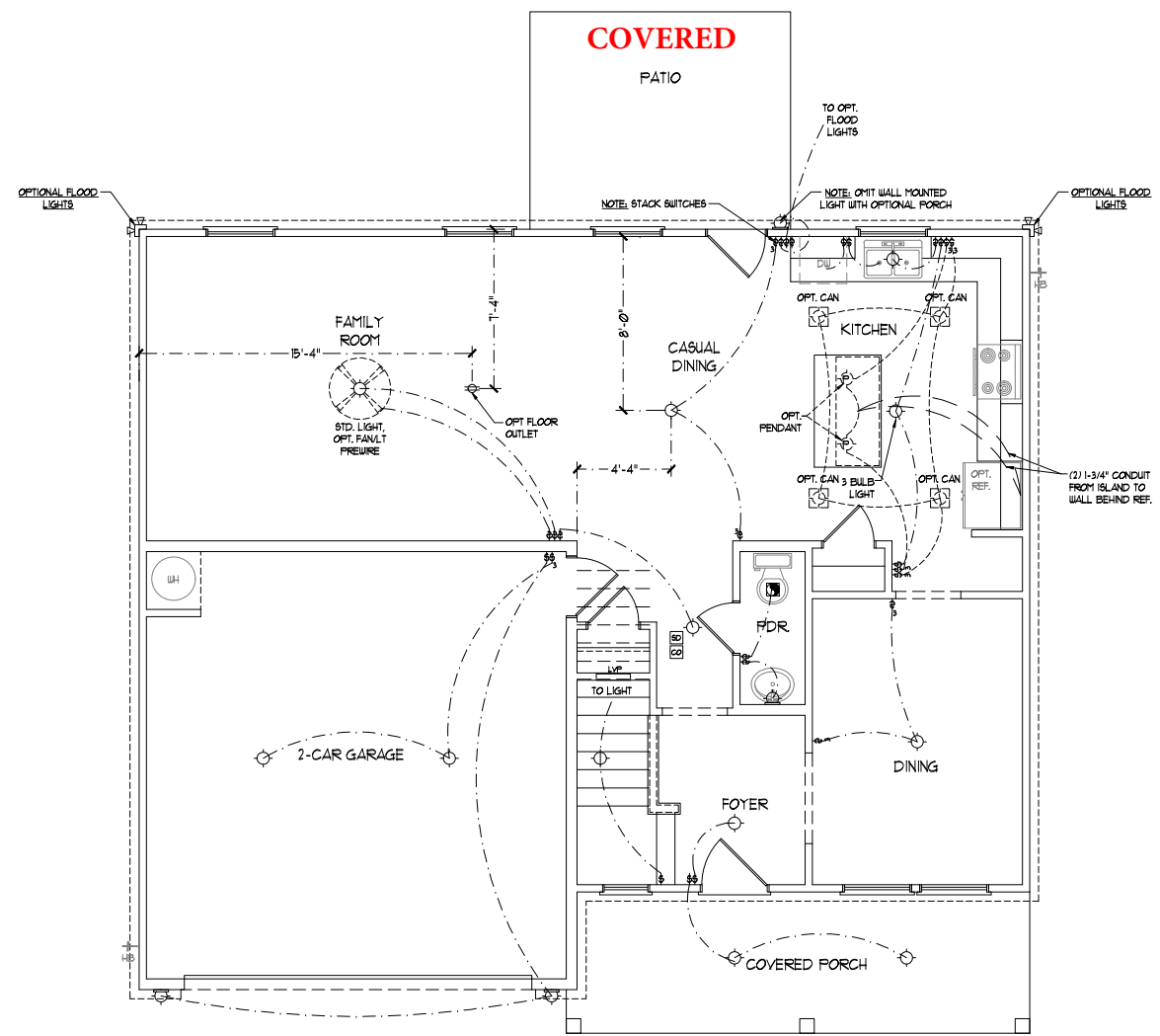
DATE: OCTOBER 13, 2017
REV.: MARCH 30, 2020
SCALE: 1/4" = 1'-0"
DRAWN BY:
ENGINEERED BY:
REVIEWED BY:

WALL SECTIONS
AND STAIR
DETAIL
AD-1

ELECTRICAL LAYOUT NOTES:

- 1) BLOCK AND WIRE FOR ALL CEILING FANS PER PLAN.
- 2) VANTY LIGHTS TO BE SET # 30" AFF. (TYP.)
- 3) ADDITIONAL EXTERIOR OUTLETS REQUIRED BY CODE TO BE LOCATED BY ELECTRICIAN.
- 4) PLACE SWITCHES 6" (MIN) FROM ROUGH OPENINGS.

ELECTRICAL LEGEND	
	100 V OUTLET
	WALL MOUNT LIGHT
	CEILING MOUNT LIGHT
	PENDANT LIGHT
	RECESSED CAN LIGHT
	MINI CAN LIGHT
	EYEBALL LIGHT
	FLUORESCENT LIGHT
	2 LAMP, 4' FLUORESCENT LIGHT
	FLOOD LIGHT
	SWITCH
	3-WAY SWITCH
	4-WAY SWITCH
	DIMMER SWITCH
	CONDUIT FOR COMPONENT WIRING
	SPEAKER
	DOORBELL CHIME
	110 V SMOKE DETECTOR
	CO DETECTOR
	EXHAUST FAN
	LOW VOLTAGE PANEL
	CEILING FAN
	CEILING FAN w/ LIGHT



FIRST FLOOR PLAN



PRICES, PROMOTIONS, INCENTIVES, FEATURES, OPTIONS, DIMENSIONS ARE SUBJECT TO CHANGE WITHOUT NOTICE. SQUARE FOOTAGE AND DIMENSIONS ARE ESTIMATED AND MAY VARY IN ACTUAL CONSTRUCTION. ACTUAL POSITION OF HOUSE ON LOT WILL BE DETERMINED BY THE SITE. RENDERS ARE ARTIST CONCEPTIONS. FLOOR PLANS ARE THE COPYRIGHTED PROPERTY OF DREAM FINDERS HOMES. ANY USE, REPRODUCTION, ADAPTATION, OR DISPLAY OF THE PLANS IS STRICTLY PROHIBITED. SEE NEW CONSTRUCTION DETAILS. COPYRIGHT © DREAM FINDERS HOMES

DREAM FINDERS HOMES
TOPSAIL

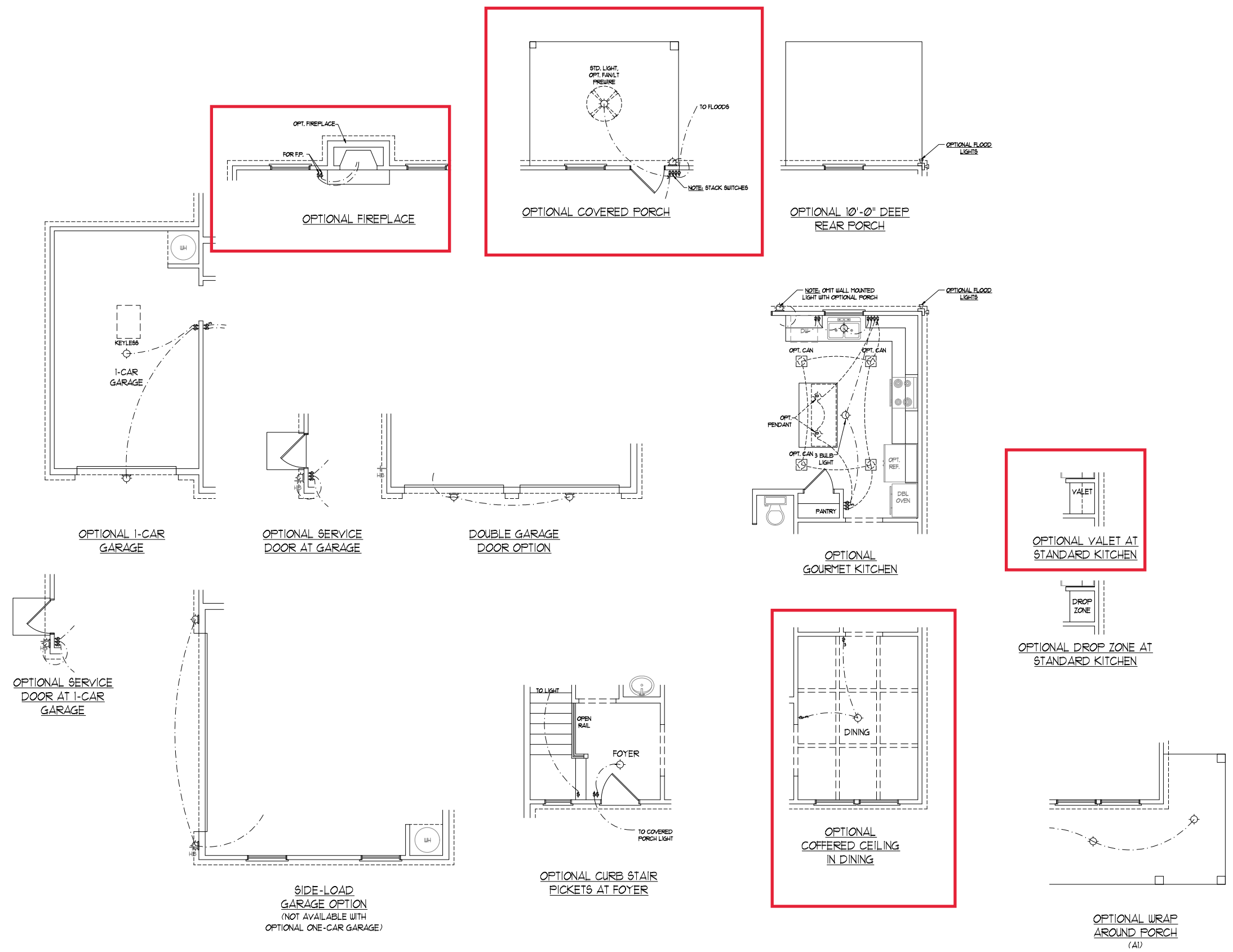
DATE: OCTOBER 13, 2017
 REV.: MARCH 30, 2020
 SCALE: 1/4" = 1'-0"
 DRAWN BY:
 ENGINEERED BY:
 REVIEWED BY:

FIRST FLOOR
ELECTRICAL
PLAN

ELECTRICAL LAYOUT NOTES:

- 1) BLOCK AND WIRE FOR ALL CEILING FANS PER PLAN.
- 2) VANTY LIGHTS TO BE SET # 30" AFF. (TYP.)
- 3) ADDITIONAL EXTERIOR OUTLETS REQUIRED BY CODE TO BE LOCATED BY ELECTRICIAN.
- 4) PLACE SWITCHES 8" (MIN) FROM ROUGH OPENINGS.

ELECTRICAL LEGEND	
	100 V OUTLET
	WALL MOUNT LIGHT
	CEILING MOUNT LIGHT
	PENDANT LIGHT
	RECESSED CAN LIGHT
	MINI CAN LIGHT
	EYEBALL LIGHT
	FLUORESCENT LIGHT
	2 LAMP, 4 FLUORESCENT LIGHT
	FLOOD LIGHT
	SWITCH
	3-WAY SWITCH
	4-WAY SWITCH
	DIMMER SWITCH
	CONDUIT FOR COMPONENT WIRING
	SPEAKER
	DOORBELL CHIME
	100 V SMOKE DETECTOR
	CO DETECTOR
	EXHAUST FAN
	LOW VOLTAGE PANEL
	CEILING FAN
	CEILING FAN w/ LIGHT



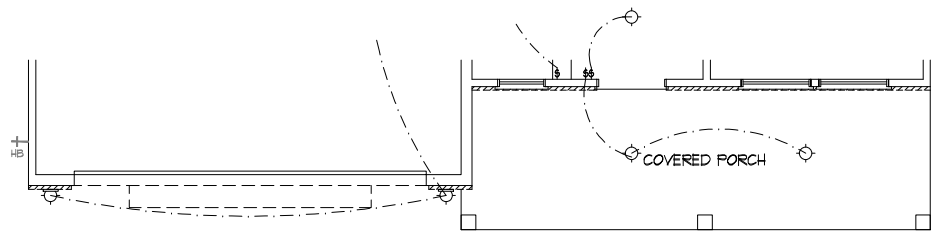
PRICES, PROMOTIONS, INCENTIVES, FEATURES, OPTIONS, DIMENSIONS ARE SUBJECT TO CHANGE WITHOUT NOTICE. SQUARE FOOTAGE AND DIMENSIONS ARE ESTIMATED AND MAY VARY IN ACTUAL CONSTRUCTION. ACTUAL POSITION OF HOUSE ON LOT WILL BE DETERMINED BY THE SITE. RENDERINGS ARE ARTIST CONCEPTIONS. FLOOR PLANS ARE THE COPYRIGHTED PROPERTY OF DREAM FINDERS HOMES. ANY USE, REPRODUCTION, ADAPTATION, OR DISPLAY OF THE PLANS IS STRICTLY PROHIBITED. SEE NEW CONSTRUCTION DETAILS. COPYRIGHT © DREAM FINDERS HOMES

**DREAM FINDERS HOMES
TOPSAIL**

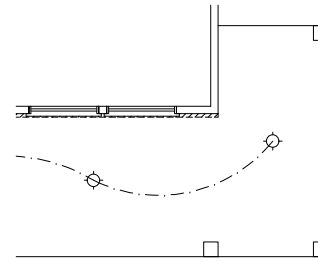
DATE: OCTOBER 13, 2017
 REV.: MARCH 30, 2020
 SCALE: 1/4" = 1'-0"
 DRAWN BY:
 ENGINEERED BY:
 REVIEWED BY:

FIRST FLOOR
 ELECTRICAL
 PLAN - OPTIONS

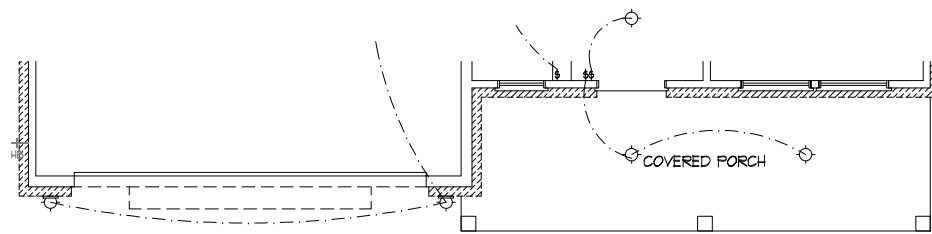
FIRST FLOOR PLAN
(A2 & A3)



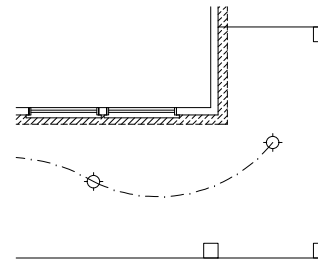
OPTIONAL WRAP
AROUND PORCH
(A2 & A3)



FIRST FLOOR PLAN
(A4)



OPTIONAL WRAP
AROUND PORCH
(A4)



PRICES, PROMOTIONS, INCENTIVES, FEATURES, OPTIONS, FINISHES, MATERIALS, DIMENSIONS, AND DIMENSIONS ARE SUBJECT TO CHANGE WITHOUT NOTICE. SQUARE FOOTAGE AND DIMENSIONS ARE ESTIMATED AND MAY VARY IN ACTUAL CONSTRUCTION. ACTUAL POSITION OF HOUSE ON LOT WILL BE DETERMINED BY THE SITE. DIMENSIONS ARE ARTIST CONCEPTIONS. FLOOR PLANS ARE THE COPYRIGHTED PROPERTY OF DREAM FINDERS HOMES. ANY USE, REPRODUCTION, ADAPTATION, OR DISPLAY OF THE PLANS IS STRICTLY PROHIBITED. SEE NEW CONSTRUCTION DETAILS. COPYRIGHT © DREAM FINDERS HOMES

DREAM FINDERS HOMES
TOPSAIL

DATE: OCTOBER 13, 2017

REV.: MARCH 30, 2020

SCALE: 1/4"=1'-0"

DRAWN BY:

ENGINEERED BY:

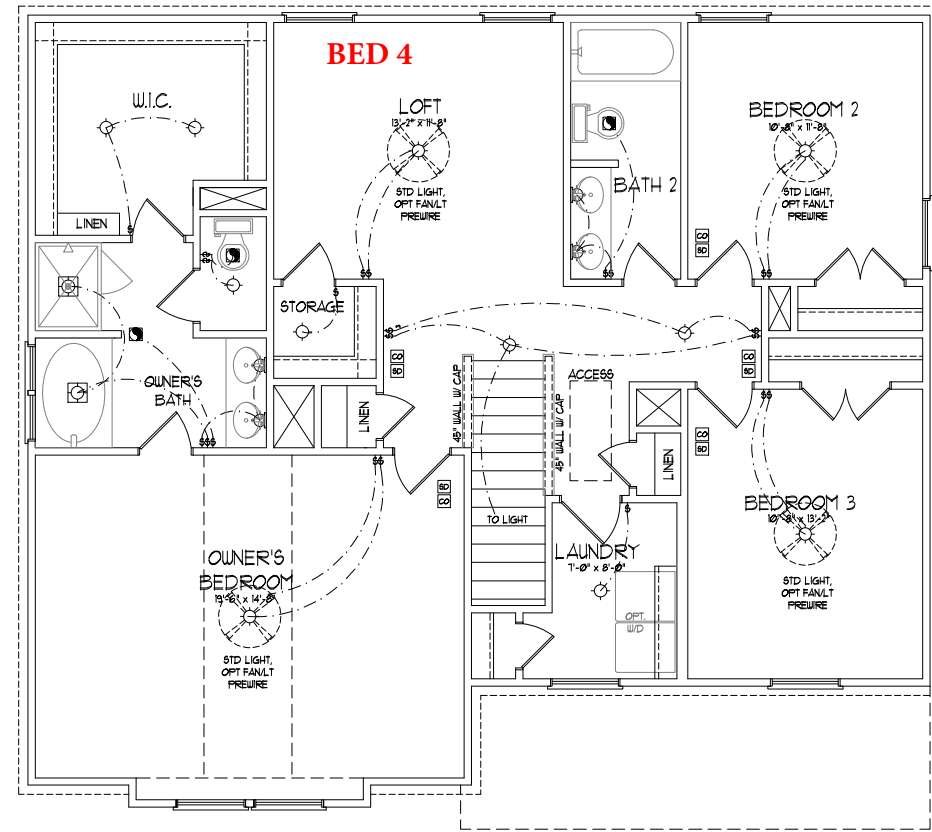
REVIEWED BY:

FIRST FLOOR
ELECTRICAL
PARTIAL PLANS
ELEVATION A

E-1.2

- ELECTRICAL LAYOUT NOTES:**
- 1) BLOCK AND WIRE FOR ALL CEILING FANS PER PLAN.
 - 2) VANITY LIGHTS TO BE SET # 30" AFF. (TYP.)
 - 3) ADDITIONAL EXTERIOR OUTLETS REQUIRED BY CODE TO BE LOCATED BY ELECTRICIAN.
 - 4) PLACE SWITCHES 8" (MIN) FROM ROUGH OPENINGS.

ELECTRICAL LEGEND	
	10 V OUTLET
	WALL MOUNT LIGHT
	CEILING MOUNT LIGHT
	PENDANT LIGHT
	RECESSED CAN LIGHT
	MINI CAN LIGHT
	EYEBALL LIGHT
	FLUORESCENT LIGHT
	2 LAMP, 4' FLUORESCENT LIGHT
	FLOOD LIGHT
	SWITCH
	3-WAY SWITCH
	4-WAY SWITCH
	DIMMER SWITCH
	CONDUIT FOR COMPONENT WIRING
	SPEAKER
	DOORBELL CHIME
	10 V SMOKE DETECTOR
	CO DETECTOR
	EXHAUST FAN
	LOW VOLTAGE PANEL
	CEILING FAN
	CEILING FAN w/ LIGHT



SECOND FLOOR PLAN



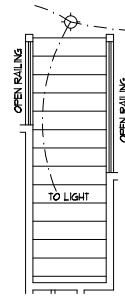
PRICES, PROMOTIONS, INCENTIVES, FEATURES, OPTIONS, DIMENSIONS ARE SUBJECT TO CHANGE WITHOUT NOTICE. SQUARE FOOTAGE AND DIMENSIONS ARE ESTIMATED AND MAY VARY IN ACTUAL CONSTRUCTION. ACTUAL POSITION OF HOUSE ON LOT WILL BE DETERMINED BY THE SITE SURVEY. THESE ARE ARTIST CONCEPTIONS. FLOOR PLANS ARE THE COPYRIGHTED PROPERTY OF DREAM FINDERS HOMES. ANY USE, REPRODUCTION, ADAPTATION, OR DISPLAY OF THE PLANS IS STRICTLY PROHIBITED. SEE NEW CONSTRUCTION DETAILS. COPYRIGHT © DREAM FINDERS HOMES

DREAM FINDERS HOMES
TOPSAIL

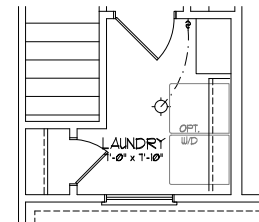
DATE: OCTOBER 13, 2017
REV.: MARCH 30, 2020
SCALE: 1/4" = 1'-0"
DRAWN BY:
ENGINEERED BY:
REVIEWED BY:

SECOND FLOOR ELECTRICAL PLAN

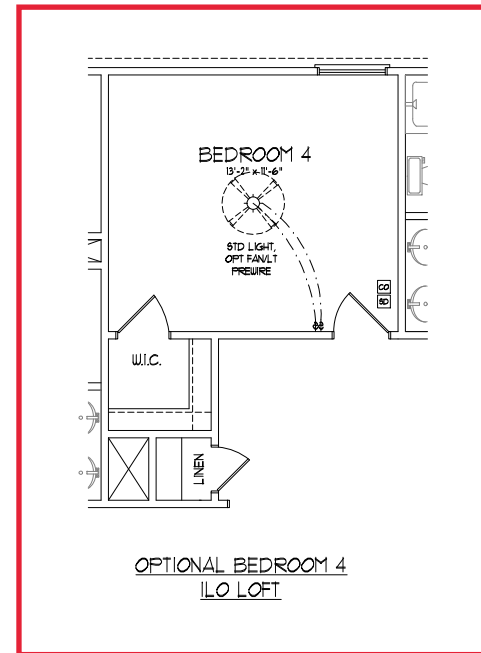
ELECTRICAL LEGEND	
	10 V OUTLET
	WALL MOUNT LIGHT
	CEILING MOUNT LIGHT
	PENDANT LIGHT
	RECESSED CAN LIGHT
	MINI CAN LIGHT
	EYEBALL LIGHT
	FLUORESCENT LIGHT
	2 LAMP, 4' FLUORESCENT LIGHT
	FLOOD LIGHT
	SWITCH
	3-WAY SWITCH
	4-WAY SWITCH
	DIMMER SWITCH
	CONDUIT FOR COMPONENT WIRING
	SPEAKER
	DOORBELL CHIME
	10 V SMOKE DETECTOR
	CO DETECTOR
	EXHAUST FAN
	LOW VOLTAGE PANEL
	CEILING FAN
	CEILING FAN w/ LIGHT



OPTIONAL OPEN RAIL
ILO 45" WALL W/ CAP



OPTIONAL WORKSTATION
AT LAUNDRY



OPTIONAL WINDOW AT
BEDROOM 4

NOTE: ALL EXTERIOR WALLS AND ATTIC WALLS ARE TO BE 2 x 6 @ 16" O.C. (UNO). 2 x 4 @ 16" O.C. EXTERIOR WALLS MAY BE CONSTRUCTED IN LIEU OF 2 x 6 WALLS (UNO). ALL INTERIOR LOAD BEARING WALLS ARE TO BE 2 x 4 @ 16" O.C. (UNO) AND NON-LOAD BEARING INTERIOR WALLS ARE TO BE 2 x 4 @ 24" O.C. (UNO).

- BRACED WALL DESIGN NOTES:**
- BRACED WALL DESIGN PER SECTION R602.10 OF THE NRC 2018 EDITION.
 - CS-USP REFERS TO "CONTINUOUS SHEATHING - WOOD STRUCTURAL PANELS" CONTRACTOR IS TO INSTALL 1/2" OSB ON ALL EXTERIOR WALLS ATTACHED w/ 8d NAILS SPACED 6" O.C. ALONG PANEL EDGES AND 12" O.C. IN THE FIELD.
 - GB REFERS TO "GYPSUM BOARD" CONTRACTOR IS TO INSTALL 1/2" (MIN) GYPSUM WALL BOARD WHERE NOTED ON THE PLANS. FASTEN GB WITH 1 1/4" SCREWS OR 1 5/8" NAILS SPACED 1" O.C. ALONG PANEL EDGES AND IN THE FIELD INCLUDING TOP AND BOTTOM PLATES.
 - BRACED WALL DESIGN APPLIED IN WIND ZONES UP TO 130 MPH. FOR HIGH WIND ZONES, BRACE WALLS ARE TO BE CONSTRUCTED IN ACCORDANCE WITH CHAPTER 45 OF THE NRC 2018 EDITION.
 - SEE NOTES AND DETAIL SHEETS FOR ADDITIONAL BRACED WALL INFORMATION.

BRACED WALL DESIGN

RECTANGLE A	RECTANGLE B
SIDE 1A (FRONT LOAD)	SIDE 1B
METHOD: CS-USP/FF/GB	METHOD: CS-USP/FF
TOTAL REQUIRED LENGTH: 151'	TOTAL REQUIRED LENGTH: 456'
TOTAL PROVIDED LENGTH: 216'	TOTAL PROVIDED LENGTH: 61'
SIDE 2A	SIDE 2B
METHOD: CS-USP	METHOD: CS-USP
TOTAL REQUIRED LENGTH: 151'	TOTAL REQUIRED LENGTH: 456'
TOTAL PROVIDED LENGTH: 2066'	TOTAL PROVIDED LENGTH: 12'
SIDE 3A (SIDE LOAD)	SIDE 3B
METHOD: CS-USP/FF/GB	METHOD: CS-USP
TOTAL REQUIRED LENGTH: 1155'	TOTAL REQUIRED LENGTH: 319'
TOTAL PROVIDED LENGTH: 2012'	TOTAL PROVIDED LENGTH: 1558'
SIDE 4A	SIDE 4B/3A CUMULATIVE
METHOD: CS-USP	METHOD: CS-USP/GB
TOTAL REQUIRED LENGTH: 1155'	TOTAL REQUIRED LENGTH: 2014'
TOTAL PROVIDED LENGTH: 35'	TOTAL PROVIDED LENGTH: 3145'

TABLE R602.7.5
MINIMUM NUMBER OF FULL HEIGHT KING STUDS AT EACH END OF HEADERS IN EXTERIOR WALLS

HEADER SPAN (FEET)	MINIMUM NUMBER OF FULL HEIGHT STUDS (KINGS)
UP TO 3'	1
> 3' TO 6'	2
> 6' TO 9'	3
> 9' TO 12'	4
> 12' TO 15'	5

- STRUCTURAL NOTES:**
- ALL FRAMING LUMBER TO BE SPP #2 (UNO). ALL TREATED LUMBER TO BE SYP #2 (UNO).
 - ALL LOAD BEARING HEADERS TO BE (2) 2 x 6 (UNO).
 - INSTALL AN EXTRA JOIST UNDER WALLS PARALLEL TO FLOOR JOISTS WHERE NOTED ON THE PLANS.
 - WINDOW AND DOOR HEADERS TO BE SUPPORTED BY (1) JACK STUD AND (1) KING STUD EA END (UNO). SEE TABLE R602.15 FOR ADDITIONAL KING STUD REQUIREMENTS.
 - SQUARES DENOTE POINT LOADS WHICH REQUIRE SOLID BLOCKING TO GIRDER OR FOUNDATION. ALL SQUARES TO BE (2) STUDS (UNO).
 - FOR HIGH WIND ZONES, ALL EXTERIOR WALLS TO BE SHEATHED WITH 1/2" OSB SHEATHING WITH JOINTS BLOCKED AND SECURED WITH 8d NAILS AT 3" O.C. ALONG EDGES AND 6" O.C. IN THE FIELD.
 - FOR HIGH WIND ZONES, SECURE ALL EXTERIOR WALL SHEATHING PANELS TO DOUBLE TOP PLATES, BANDS, JOISTS, AND GIRDERS WITH (2) ROUS OF 8d NAILS STAGGERED AT 3" O.C. PANELS SHALL EXTEND 12" BEYOND CONSTRUCTION JOINTS AND SHALL OVERLAP GIRDERS AND DOUBLE SILL PLATES THEIR FULL DEPTH.
 - ALL 4 x 4 POSTS SHALL BE ANCHORED TO SLABS w/ SIMPSON ALU44 POST BASES (OR EQUAL) AND 6 x 6 POSTS w/ ABUS66 POST BASES (OR EQUAL) (UNO). ALL 4 x 4 AND 6 x 6 POSTS TO BE INSTALLED WITH 100 LB CAPACITY UPLIFT CONNECTORS AT TOP (UNO).
 - FOR FIBERGLASS, ALUMINUM, OR COLUMN ENG. BY OTHERS, SECURE TO SLAB w/ (2) METAL ANGLES USING 2" CONC. SCREWS. FASTEN ANGLES TO COLUMNS w/ 1/4" THROUGH BOLTS w/ NUTS AND WASHERS. LOCATE ANGLES ON OPPOSITE SIDES OF COLUMN. THROUGH BOLTS MUST BE INSTALLED PRIOR TO SETTING COLUMN.
 - REFER TO NOTES AND DETAIL SHEETS FOR ADDITIONAL STRUCTURAL INFORMATION.

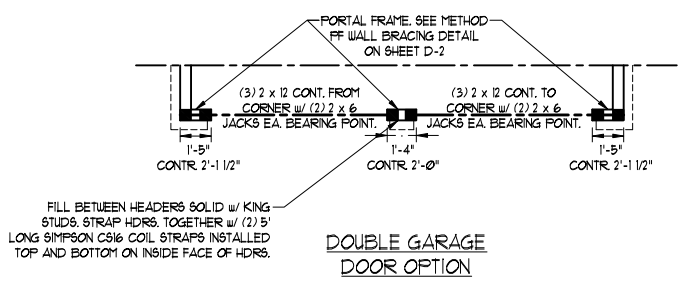
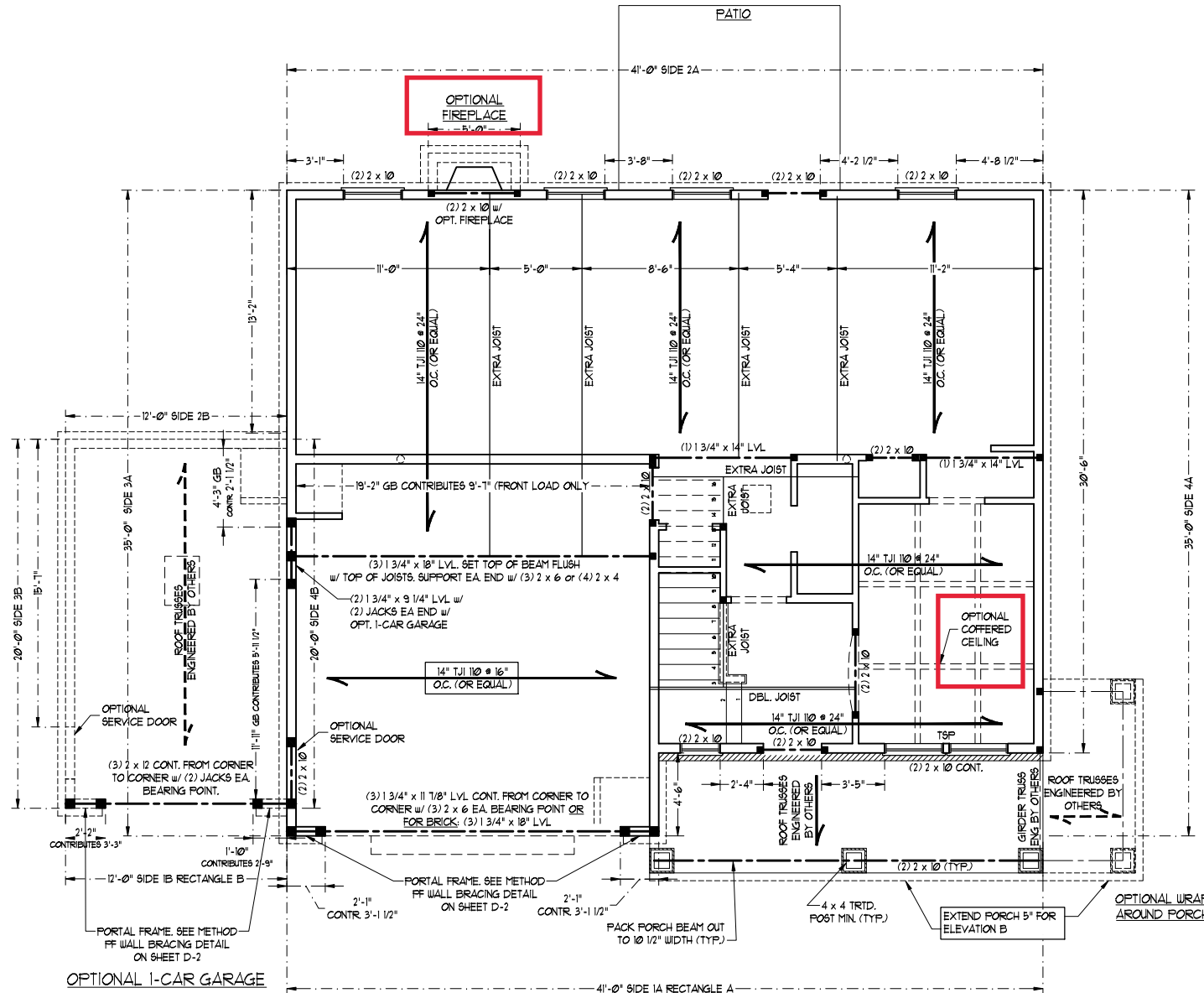
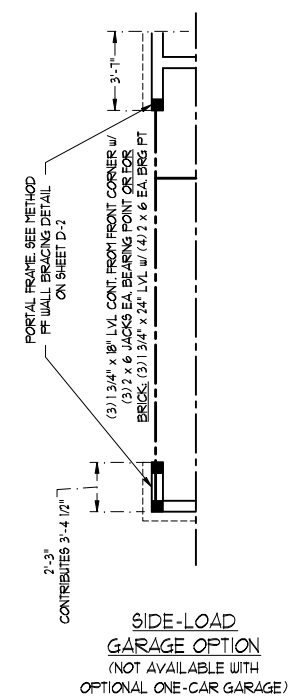
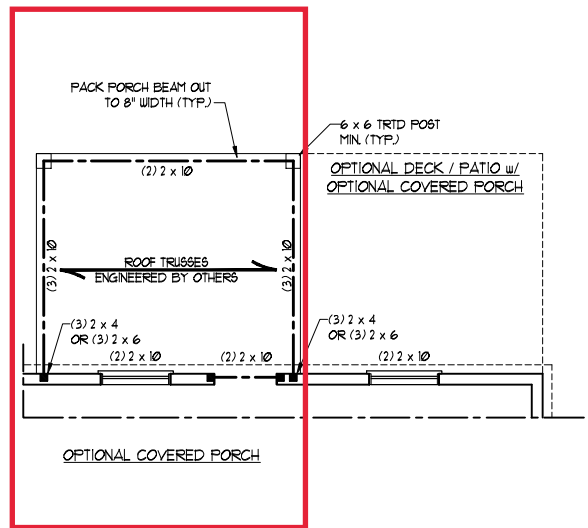


NOTE:
BCI 45008-1B I-JOISTS MAY BE USED IN LIEU OF TJI 110 I-JOISTS AT THE DEPTH AND SPACING NOTED ON THE PLAN.

LINTEL SCHEDULE FOR BRICK/NATURAL STONE SUPPORT

LENGTH (FT.)	SIZE OF LINTEL
UP TO 4 FT.	L 3 1/2 x 3 1/2 x 1/4
4-8	L 5 x 3 1/2 x 5/16 LLV
8 AND GREATER	L 6 x 4 x 5/16 LLV

- BRICK SUPPORT NOTES:**
- LINTEL SCHEDULE APPLIES TO ALL OPENINGS IN BRICK VENEER (UNO). SEE ARCH DETAILS FOR SIZE AND LOCATION OF OPENINGS.
 - (LLV) = LONG LEG VERTICAL
 - LENGTH = CLEAR OPENING
 - EMBED ALL ANGLE IRONS MIN. 4" EACH SIDE INTO VENEER TO PROVIDE BEARING.
 - FOR ALL HEADERS 8'-0" AND GREATER IN LENGTH, ATTACH STEEL ANGLE TO HEADER w/ 1/2" LAG SCREWS @ 12" O.C. STAGGERED.
 - FOR ALL BRICK SUPPORT @ ROOF LINES, FASTEN (2) 2 x 10 BLOCKING BETWEEN STUDS w/ (4) 12d NAILS PER PLY. FASTEN 4 6" x 4" x 5/16" STEEL ANGLE TO (2) 2 x 10 BLOCKING w/ (2) 1/2" LAG SCREWS @ 12" O.C. STAGGERED. SEE SECTION R103.2.2 OF THE 2018 NRC FOR ADDITIONAL BRICK SUPPORT INFORMATION.
 - PRECAST REINFORCED CONCRETE LINTELS ENGINEERED BY OTHERS MAY BE USED IN LIEU OF STEEL LINTELS.



J.S. THOMPSON ENGINEERING, INC
606 WADE AVE., SUITE 104 RALEIGH, NC 27605
PHONE: (919) 789-9919 FAX: (919) 789-9921
N.C. LICENSE NO.: C1733

TOPSAIL
H&H HOMES

DATE: NOVEMBER 2, 2020
SCALE: 1/4" = 1'-0"
DRAWN BY: H&H HOMES
ENGINEERED BY: WFB

SHEET 4 OF 8
S-2
SECOND FLOOR FRAMING PLAN

NOTE: ALL EXTERIOR WALLS AND ATTIC WALLS ARE TO BE 2 x 6 @ 16" O.C. (UNO). 2 x 4 @ 16" O.C. EXTERIOR WALLS MAY BE CONSTRUCTED IN LIEU OF 2 x 6 WALLS (UNO). ALL INTERIOR LOAD BEARING WALLS ARE TO BE 2 x 4 @ 16" O.C. (UNO) AND NON-LOAD BEARING INTERIOR WALLS ARE TO BE 2 x 4 @ 24" O.C. (UNO).

- BRACED WALL DESIGN NOTES:**
- BRACED WALL DESIGN PER SECTION R602.10 OF THE NRC 2018 EDITION.
 - CS-WSP REFERS TO "CONTINUOUS SHEATHING - WOOD STRUCTURAL PANELS" CONTRACTOR IS TO INSTALL 1/8" OSB ON ALL EXTERIOR WALLS ATTACHED W/ 8d NAILS SPACED 6" O.C. ALONG PANEL EDGES AND 12" O.C. IN THE FIELD.
 - GB REFERS TO "GYPSUM BOARD" CONTRACTOR IS TO INSTALL 1/2" (MIN) GYPSUM WALL BOARD WHERE NOTED ON THE PLANS. FASTEN GB WITH 1 1/4" SCREWS OR 1 5/8" NAILS SPACED 12" O.C. ALONG PANEL EDGES AND IN THE FIELD INCLUDING TOP AND BOTTOM FLATES.
 - BRACED WALL DESIGN APPLIED IN WIND ZONES UP TO 150 MPH. FOR HIGH WIND ZONES BRACE WALLS ARE TO BE CONSTRUCTED IN ACCORDANCE WITH CHAPTER 45 OF THE NRC 2018 EDITION.
 - SEE NOTES AND DETAIL SHEETS FOR ADDITIONAL BRACED WALL INFORMATION.

- NOTE:**
- PER SECTION R602.10.3.2 OF THE 2018 NRC, THE AMOUNT OF BRACING ON THE SECOND FLOOR EXCEEDS THE AMOUNT REQUIRED FOR THE FIRST FLOOR AND NO BRACED WALL ANALYSIS IS REQUIRED.
 - SHEATH ALL EXTERIOR WALLS WITH 1/8" OSB SHEATHING ATTACHED WITH 8d NAILS AT 6" O.C. ALONG PANEL EDGES AND 12" O.C. IN THE FIELD.

LINTEL SCHEDULE FOR BRICK/NATURAL STONE SUPPORT

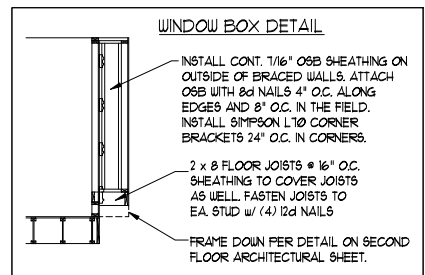
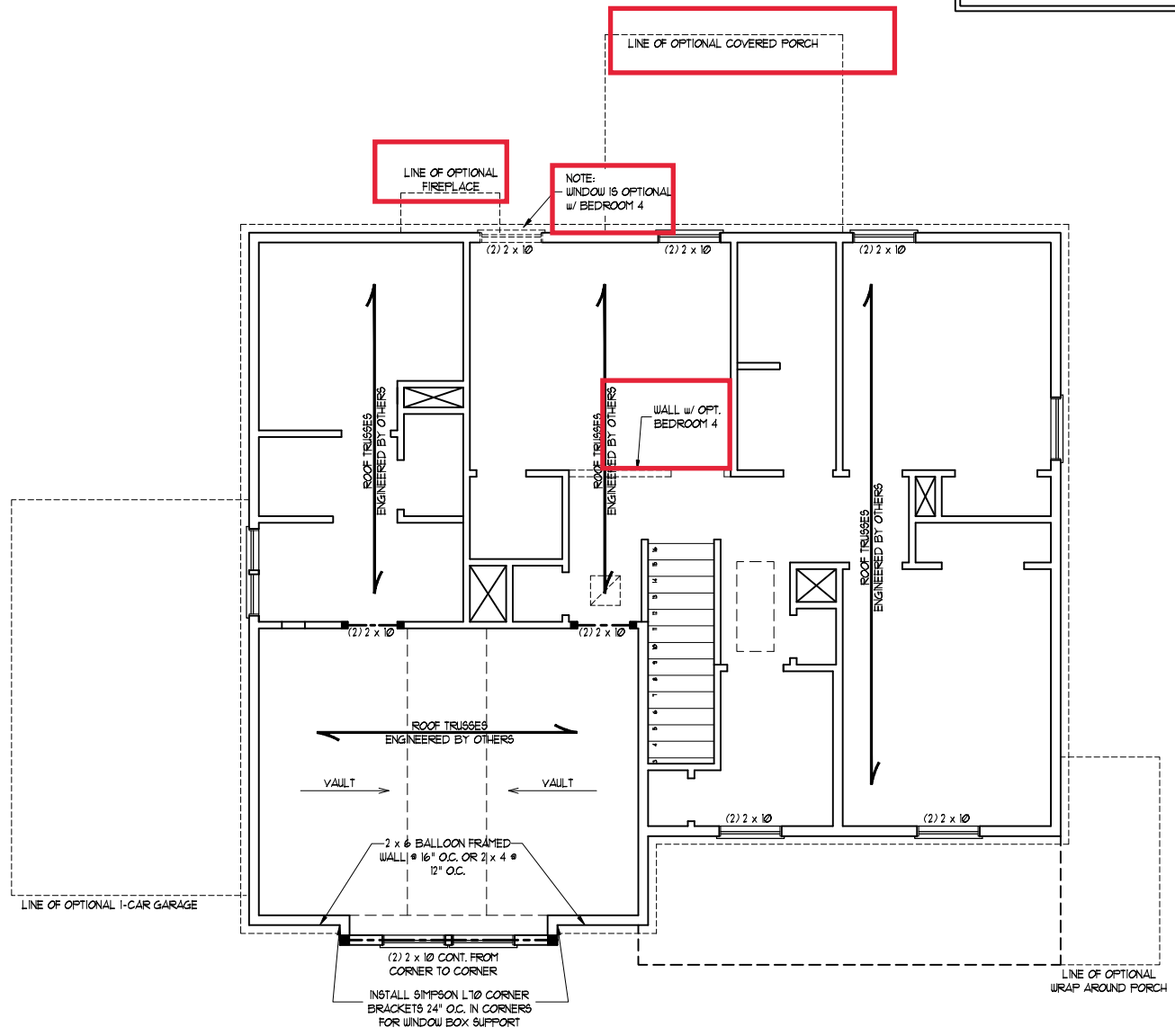
LENGTH (FT.)	SIZE OF LINTEL
UP TO 4 FT.	L 3 1/2 x 3 1/2 x 1/4
4-8	L 5 x 3 1/2 x 5/16 LLY
8 AND GREATER	L 6 x 4 x 5/16 LLY

- BRICK SUPPORT NOTES:**
- LINTEL SCHEDULE APPLIES TO ALL OPENINGS IN BRICK VENEER (UNO). SEE ARCH DUGS FOR SIZE AND LOCATION OF OPENINGS.
 - (LLV) = LONG LEG VERTICAL
 - LENGTH = CLEAR OPENING
 - EMBED ALL ANGLE IRONS MIN. 4" EACH SIDE INTO VENEER TO PROVIDE BEARING.
 - FOR ALL HEADERS 8'-0" AND GREATER IN LENGTH ATTACH STEEL ANGLE TO HEADER W/ 1/2" LAG SCREWS @ 12" O.C. STAGGERED.
 - FOR ALL BRICK SUPPORT @ ROOF LINES, FASTEN (2) 2 x 10 BLOCKING BETWEEN STUDS W/ (4) 12d NAILS PER PLY. FASTEN A 6" x 4" x 5/16" STEEL ANGLE TO (2) 2 x 10 BLOCKING W/ (2) 1/2" LAG SCREWS @ 12" O.C. STAGGERED. SEE SECTION R703.2.1 OF THE 2018 NRC FOR ADDITIONAL BRICK SUPPORT INFORMATION.
 - FRECAST REINFORCED CONCRETE LINTELS ENGINEERED BY OTHERS MAY BE USED IN LIEU OF STEEL LINTELS.

**TABLE R602.7.5
MINIMUM NUMBER OF FULL HEIGHT KING STUDS AT EACH END OF HEADERS IN EXTERIOR WALLS**

HEADER SPAN (FEET)	MINIMUM NUMBER OF FULL HEIGHT STUDS (KINGS)
UP TO 3'	1
> 3' TO 6'	2
> 6' TO 9'	3
> 9' TO 12'	4
> 12' TO 15'	5

- STRUCTURAL NOTES:**
- ALL FRAMING LUMBER TO BE SPF #2 (UNO). ALL TREATED LUMBER TO BE SYP #2 (UNO).
 - ALL LOAD BEARING HEADERS TO BE (2) 2 x 6 (UNO).
 - WINDOW AND DOOR HEADERS TO BE SUPPORTED W/ (1) JACK STUD AND (1) KING STUD EACH END (UNO). SEE TABLE R602.15 FOR ADDITIONAL KING STUD REQUIREMENTS.
 - SQUARES DENOTE POINT LOADS WHICH REQUIRE SOLID BLOCKING TO GIRDER OR FOUNDATION. ALL SQUARES TO BE (2) STUDS (UNO).
 - FOR HIGH WIND ZONES, ALL EXTERIOR WALLS TO BE SHEATHED WITH 1/8" OSB SHEATHING WITH JOINTS BLOCKED AND SECURED WITH 8d NAILS AT 3" O.C. ALONG EDGES AND 6" O.C. IN THE FIELD.
 - FOR HIGH WIND ZONES, SECURE ALL EXTERIOR WALL SHEATHING PANELS TO DOUBLE TOP PLATES, BANDS, JOISTS, AND GIRDERS WITH (2) ROWS OF 8d NAILS STAGGERED AT 3" O.C. PANELS SHALL EXTEND 12" BEYOND CONSTRUCTION JOINTS AND SHALL OVERLAP GIRDERS AND DOUBLE SILL PLATES THEIR FULL DEPTH. REFER TO NOTES AND DETAIL SHEETS FOR ADDITIONAL STRUCTURAL INFORMATION.



SEAL
33736
11/2/2020
(REVISED 7/14/2022)

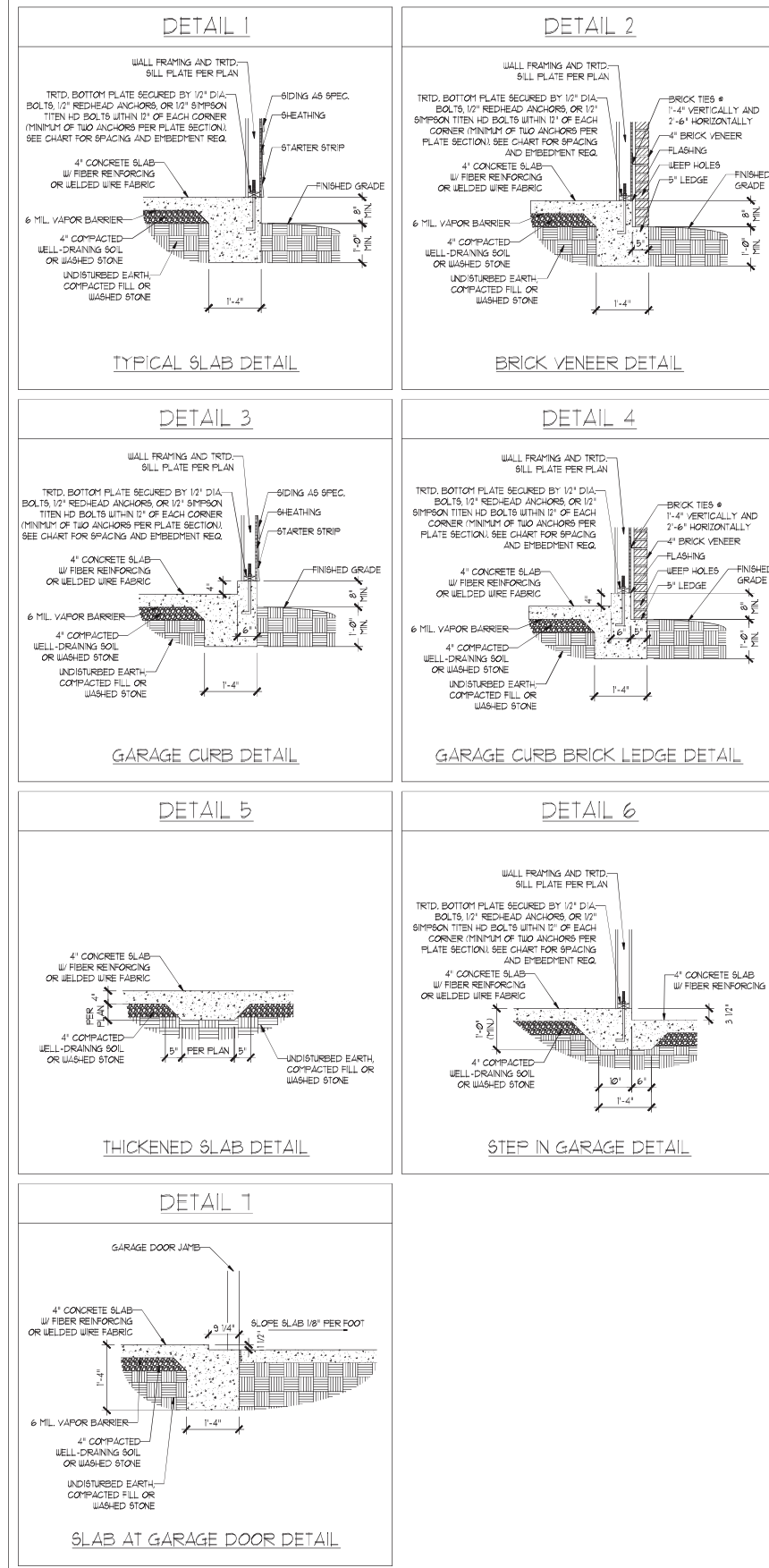
**J.S. THOMPSON
ENGINEERING, INC**
606 WADE AVE., SUITE 104 RALEIGH, NC 27605
PHONE: (919) 789-9919 FAX: (919) 789-9921
N.C. LICENSE NO.: C-1733

TOPSAIL
H&H HOMES

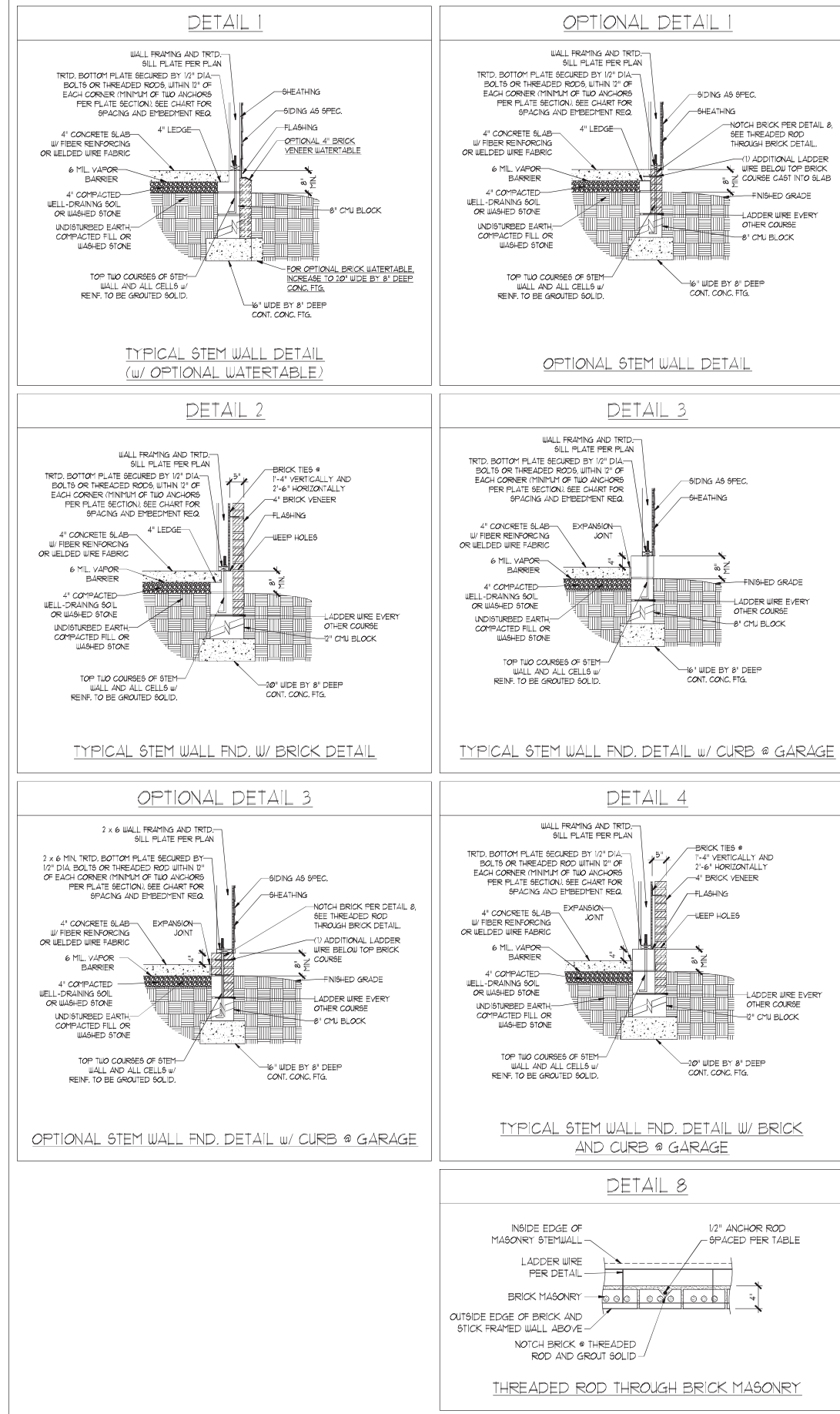
DATE: NOVEMBER 2, 2020
SCALE: 1/4" = 1'-0"
DRAWN BY: H&H HOMES
ENGINEERED BY: WFB

SHEET 5 OF 8
S-3
ATTIC FLOOR
FRAMING PLAN

MONOLITHIC SLAB DETAILS



STEMWALL DETAILS



MASONRY STEMWALL SPECIFICATIONS

WALL HEIGHT (FEET)	MASONRY WALL TYPE			
	8" CMU	4" BRICK AND 4" CMU	4" BRICK AND 8" CMU	12" CMU
2 AND BELOW	UNGROUTED	GROUT SOLID	UNGROUTED	UNGROUTED
3	UNGROUTED	GROUT SOLID	UNGROUTED	UNGROUTED
4	GROUT SOLID	GROUT SOLID w/ #4 REBAR @ 48" O.C.	GROUT SOLID	GROUT SOLID w/ #4 REBAR @ 64" O.C.
5	GROUT SOLID w/ #4 REBAR @ 36" O.C.	NOT APPLICABLE	GROUT SOLID w/ #4 REBAR @ 36" O.C.	GROUT SOLID w/ #4 REBAR @ 64" O.C.
6	GROUT SOLID w/ #4 REBAR @ 24" O.C.	NOT APPLICABLE	GROUT SOLID w/ #4 REBAR @ 24" O.C.	GROUT SOLID w/ #4 REBAR @ 64" O.C.
7 AND GREATER	ENGINEERED DESIGN BASED ON SITE CONDITIONS			

STRUCTURAL NOTES:

- WALL HEIGHT MEASURED FROM TOP OF FOOTING TO TOP OF THE WALL.
- TIE MULTIPLE W/THES TOGETHER WITH LADDER WIRE AT 16" O.C. VERTICALLY.
- CHART APPLICABLE FOR HOUSE FOUNDATION ONLY. CONSULT ENGINEER FOR DESIGN OF GARAGE FOUNDATION NOT COMMON TO HOUSE.
- BACKFILL OF CLEAN #57 1/2" WASHED STONE IS ALLOWABLE.
- BACKFILL OF WELL DRAINED OR SAND - GRAVEL MIXTURE SOILS (45 PSF/FT BELOW GRADE) CLASSIFIED AS GROUP 1 ACCORDING TO UNIFIED SOILS CLASSIFICATION SYSTEM IN ACCORDANCE WITH TABLE R405.1 OF THE 2018 INTERNATIONAL RESIDENTIAL CODE ARE ALLOWABLE.
- PREP SLAB PER R502.2.1 AND R502.2.2 BASE OF THE 2018 INTERNATIONAL RESIDENTIAL CODE. MINIMUM 24" LAP SPLICE LENGTH.
- LOCATE REBAR IN CENTER OF FOUNDATION WALL.
- WHERE REQUIRED, FILL BLOCK SOLID WITH TYPE "S" MORTAR OR 3000 PSI GROUT. USE OF "LOW LIFT GROUTING" METHOD REQUIRED WHEN FILLING WALLS WITH GROUT AT HEIGHTS OF 5' AND GREATER.

ANCHOR SPACING AND EMBEDMENT

WIND ZONE	120 MPH	130 MPH
SPACING	6'-0" O.C.	4'-0" O.C.
EMBEDMENT	1'	15" INTO MASONRY 1" INTO CONCRETE

J.S. THOMPSON ENGINEERING, INC.
600 WADE AVE., SUITE 104 RALEIGH, NC 27605
PHONE: (919) 789-9919 FAX: (919) 789-9921
N.C. LICENSE NO.: C-1733

120 MPH - 130 MPH ULTIMATE DESIGN WIND SPEED
FOUNDATION DETAILS

DATE: NOVEMBER 14, 2018

SCALE: NTS

DRAWN BY: JST

ENGINEERED BY: JES



D-1
FOUNDATION DETAILS

11/2/2020

GENERAL NOTES

- ENGINEER'S SEAL APPLIES ONLY TO STRUCTURAL COMPONENTS INCLUDING ROOF RAFTERS, HIPs, VALLEYS, RIDGES, FLOORS, WALLS, BEAMS, HEADERS, COLUMNS, CANTILEVERS, OFFSET LOAD BEARING WALLS, PIERS, GIRDER SYSTEM AND FOOTING. ENGINEER'S SEAL DOES NOT CERTIFY DIMENSIONAL ACCURACY OF ARCHITECTURAL LAYOUT INCLUDING ROOF. ENGINEER'S SEAL DOES NOT APPLY TO I-JOIST OR FLOOR/ROOF TRUSS LAYOUT DESIGN AND ACCURACY.
 - ALL CONSTRUCTION SHALL CONFORM TO THE LATEST REQUIREMENTS OF THE NORTH CAROLINA RESIDENTIAL CODE (NRC), 2018 EDITION, PLUS ALL LOCAL CODES AND REGULATIONS. THE STRUCTURAL ENGINEER IS NOT RESPONSIBLE FOR, AND WILL NOT HAVE CONTROL OF, CONSTRUCTION MEANS, METHODS, TECHNIQUES, SEQUENCES OR PROCEDURES, OR SAFETY PRECAUTIONS AND PROGRAMS IN CONNECTION WITH THE CONSTRUCTION WORK. NOR WILL THE ENGINEER BE RESPONSIBLE FOR THE CONTRACTOR'S FAILURE TO CARRY OUT THE CONSTRUCTION WORK IN ACCORDANCE WITH THE CONTRACT DOCUMENTS.
 - STRUCTURAL DESIGN BASED ON THE PROVISIONS OF THE NRC, 2018 EDITION (R301.4 - R301.1)
- | DESIGN CRITERIA: | LIVE LOAD (PSF) | DEAD LOAD (PSF) | DEFLECTION (IN) |
|--------------------------------|---|-----------------|-----------------------------------|
| ATTIC WITH LIMITED STORAGE | 20 | 10 | L/240 (L/360 w/ BRITTLE FINISHES) |
| ATTIC WITHOUT STORAGE | 10 | 10 | L/360 |
| DECKS | 40 | 10 | L/360 |
| EXTERIOR BALCONIES | 40 | 10 | L/360 |
| FIRE ESCAPES | 40 | 10 | L/360 |
| HANDRAILS/GUARDRAILS | 200 LB OR 50 (PLF) | 10 | L/360 |
| PASSENGER VEHICLE GARAGE | 50 | 10 | L/360 |
| ROOMS OTHER THAN SLEEPING ROOM | 40 | 10 | L/360 |
| SLEEPING ROOMS | 30 | 10 | L/360 |
| STAIRS | 40 | 10 | L/360 |
| WIND LOAD | (BASED ON TABLE R301.2(4) WIND ZONE AND EXPOSURE) | | |
| GROUND SNOW LOAD, Pg | 20 (PSF) | | |
- I-JOIST SYSTEMS DESIGNED WITH 12 PSF DEAD LOAD AND DEFLECTION (IN) OF L/480
 - FLOOR TRUSS SYSTEMS DESIGNED WITH 15 PSF DEAD LOAD
- FOR 115 AND 120 MPH WIND ZONES, FOUNDATION ANCHORAGE IS TO COMPLY WITH SECTION R403.1.6 OF THE NRC, 2018 EDITION. FOR 130 MPH, 140 MPH, AND 150 MPH WIND ZONES, FOUNDATION ANCHORAGE IS TO COMPLY WITH SECTION 4504 OF THE NRC, 2018 EDITION.
 - ENERGY EFFICIENCY COMPLIANCE AND INSULATION VALUES OF THE BUILDING TO BE IN ACCORDANCE WITH CHAPTER 11 OF THE NRC, 2018 EDITION.

FOOTING AND FOUNDATION NOTES

- FOUNDATION DESIGN BASED ON A MINIMUM ALLOWABLE BEARING CAPACITY OF 2000 PSF. CONTACT GEOTECHNICAL ENGINEER IF BEARING CAPACITY IS NOT ACHIEVED.
- FOR ALL CONCRETE SLABS AND FOOTINGS, THE AREA WITHIN THE PERIMETER OF THE BUILDING ENVELOPE SHALL HAVE ALL VEGETATION, TOP SOIL AND FOREIGN MATERIAL REMOVED. FILL MATERIAL SHALL BE FREE OF VEGETATION AND FOREIGN MATERIAL. THE FILL SHALL BE COMPACTED TO ASSURE UNIFORM SUPPORT OF THE SLAB, AND EXCEPT WHERE APPROVED, THE FILL DEPTHS SHALL NOT EXCEED 24" FOR CLEAN SAND OR GRAVEL. A 4" THICK BASED COURSE CONSISTING OF CLEAN GRADED SAND OR GRAVEL SHALL BE PLACED. A BASE COURSE IS NOT REQUIRED WHERE A CONCRETE SLAB IS INSTALLED ON WELL-DRAINED OR SAND-GRAVEL MIXTURE SOILS CLASSIFIED AS GROUP 1, ACCORDING TO THE UNITED SOIL CLASSIFICATION SYSTEM IN ACCORDANCE WITH TABLE R405.1 OF THE NRC, 2018 EDITION.
- PROPERLY DEWATER EXCAVATION PRIOR TO POURING CONCRETE WHEN BOTTOM OF CONCRETE SLAB IS AT OR BELOW WATER TABLE. IF APPLICABLE, 3/4" - 1" DEEP CONTROL JOINTS ARE TO BE SAUED WITHIN 4 TO 12 HOURS OF CONCRETE FINISHING AND WALL LOCATIONS HAVE BEEN MARKED. ADJUST WHERE NECESSARY.
- CONCRETE SHALL CONFORM TO SECTION R402.2 OF THE NRC, 2018 EDITION. CONCRETE REINFORCING STEEL TO BE ASTM A615 GRADE 60. WELDED WIRE FABRIC TO BE ASTM A185. MAINTAIN A MINIMUM CONCRETE COVER AROUND REINFORCING STEEL OF 3" IN FOOTINGS AND 1 1/2" IN SLABS. FOR POURED CONCRETE WALLS, CONCRETE COVER FOR REINFORCING STEEL MEASURED FROM THE INSIDE FACE OF THE WALL SHALL NOT BE LESS THAN 3/4". CONCRETE COVER FOR REINFORCING STEEL MEASURED FROM THE OUTSIDE FACE OF THE WALL SHALL NOT BE LESS THAN 1 1/2" FOR #5 BARS OR SMALLER, AND NOT LESS THAN 2" FOR #6 BARS OR LARGER.
- MASONRY UNITS TO CONFORM TO ACE 530/ASCE 5/TMS 402. MORTAR SHALL CONFORM TO ASTM C270.
- THE UNSUPPORTED HEIGHT OF MASONRY PIERS SHALL NOT EXCEED FOUR TIMES THEIR LEAST DIMENSION FOR UNFILLED HOLLOW CONCRETE MASONRY UNITS AND TEN TIMES THEIR LEAST DIMENSION FOR SOLID OR SOLID FILLED PIERS. PIERS MAY BE FILLED SOLID WITH CONCRETE OR TYPE M OR S MORTAR. PIERS AND WALLS SHALL BE CAPPED WITH 8" OF SOLID MASONRY.
- THE CENTER OF EACH OF THE PIERS SHALL BEAR IN THE MIDDLE THIRD OF ITS RESPECTIVE FOOTING. EACH GIRDER SHALL BEAR IN THE MIDDLE THIRD OF THE PIERS.
- ALL CONCRETE AND MASONRY FOUNDATION WALLS ARE TO BE CONSTRUCTED IN ACCORDANCE WITH THE PROVISIONS OF SECTION R404 OF THE NRC, 2018 EDITION OR IN ACCORDANCE WITH ACI 318, ACI 332, NCM-A TR68-A OR ACE 530/ASCE 5/TMS 402. MASONRY FOUNDATION WALLS ARE TO BE REINFORCED PER TABLE R404.1(1), R404.1(2), R404.1(3), OR R404.1(4) OF THE NRC, 2018 EDITION. CONCRETE FOUNDATION WALLS ARE TO BE REINFORCED PER TABLE R404.1(5) OF THE NRC, 2018 EDITION. STEP CONCRETE FOUNDATION WALLS TO 2 x 6 FRAMED WALLS AT 16" O.C. WHERE GRADE PERMITS (UNO).

This sealed page is to be used in conjunction with a full plan set engineered by J.S. Thompson Engineering, Inc. only. Use of this individual sealed page within architectural pages or shop drawings by others is a punishable offense under N.C. Statute § 89C-23

FRAMING NOTES

- ALL FRAMING LUMBER SHALL BE #2 SFF MINIMUM (Fb = 875 PSI, Fv = 375 PSI, E = 1600000 PSI) UNLESS NOTED OTHERWISE (UNO). ALL TREATED LUMBER SHALL BE #2 SYP MINIMUM (Fb = 975 PSI, Fv = 175 PSI, E = 1600000 PSI) UNLESS NOTED OTHERWISE (UNO).
- LAMINATED VENEER LUMBER (LVL) SHALL HAVE THE FOLLOWING MINIMUM PROPERTIES: Fb = 2600 PSI, Fv = 285 PSI, E = 1900000 PSI. LAMINATED STRAND LUMBER (LSL) SHALL HAVE THE FOLLOWING MINIMUM PROPERTIES: Fb = 2325 PSI, Fv = 310 PSI, E = 1500000 PSI. PARALLEL STRAND LUMBER (PSL) UP TO 1" DEPTH SHALL HAVE THE FOLLOWING MINIMUM PROPERTIES: Fc = 7500 PSI, E = 1800000 PSI. PARALLEL STRAND LUMBER (PSL) MORE THAN 1" DEPTH SHALL HAVE THE FOLLOWING MINIMUM PROPERTIES: Fc = 7300 PSI, E = 2000000 PSI. INSTALL ALL CONNECTIONS PER MANUFACTURER'S SPECIFICATIONS.
- STRUCTURAL STEEL SHALL CONFORM TO THE FOLLOWING ASTM SPECIFICATIONS

A. W AND WT SHAPES:	ASTM A992
B. CHANNELS AND ANGLES:	ASTM A36
C. FLATES AND BARS:	ASTM A36
D. HOLLOW STRUCTURAL SECTIONS:	ASTM A500 GRADE B
E. STEEL PIPE:	ASTM A53, GRADE B, TYPE E OR S
- STEEL BEAMS SHALL BE SUPPORTED AT EACH END WITH A MINIMUM BEARING LENGTH OF 3 1/2" AND FULL FLANGE WIDTH (UNO). PROVIDE SOLID BEARING FROM BEAM SUPPORT TO FOUNDATION. BEAMS SHALL BE ATTACHED AT THE BOTTOM FLANGE TO EACH SUPPORT AS FOLLOWS (UNO):

A. WOOD FRAMING	(2) 1/2" DIA. x 4" LONG LAG SCREWS
B. CONCRETE	(2) 1/2" DIA. x 4" WEDGE ANCHORS
C. MASONRY (FULLY GROUTED)	(2) 1/2" DIA. x 4" LONG SIMPSON TITEN HD ANCHORS

LATERAL SUPPORT IS CONSIDERED ADEQUATE PROVIDING THE JOISTS ARE TOE NAILED TO THE 2x NAILER ON TOP OF THE STEEL BEAM, AND THE 2x NAILER IS SECURED TO THE TOP OF THE STEEL BEAM w/ (2) ROWS OF SELF TAPPING SCREWS @ 16" O.C. OR (2) ROWS OF 1/2" DIAMETER BOLTS @ 16" O.C. IF 1/2" BOLTS ARE USED TO FASTEN THE NAILER, THE STEEL BEAM SHALL BE FABRICATED w/ (2) ROWS OF 9/16" DIAMETER HOLES @ 16" O.C.
- SQUARES DENOTE POINT LOADS WHICH REQUIRE SOLID BLOCKING TO GIRDER OR FOUNDATION. SHADED SQUARES DENOTE POINT LOADS FROM ABOVE WHICH REQUIRE SOLID BLOCKING TO SUPPORTING MEMBER BELOW.
- ALL LOAD BEARING HEADERS TO CONFORM TO TABLE R602.7(1) AND R602.7(2) OF THE NRC, 2018 EDITION OR BE (2) 2 x 6 WITH (1) JACK AND (1) KING STUD EACH END (UNO) WHICHEVER IS GREATER. ALL HEADERS TO BE SECURED TO EACH JACK STUD WITH (4) 8d NAILS. ALL BEAMS TO BE SUPPORTED WITH (2) STUDS AT EACH BEARING POINT (UNO). INSTALL KING STUDS PER SECTION R602.15 OF THE NORTH CAROLINA RESIDENTIAL CODE, 2018 EDITION.
- ALL BEAMS, HEADERS, OR GIRDER TRUSSES PARALLEL TO WALL ARE TO BEAR FULLY ON (1) JACK OR (2) STUDS MINIMUM OR THE NUMBER OF JACKS OR STUDS NOTED. ALL BEAMS OR GIRDER TRUSSES PERPENDICULAR TO WALL AND SUPPORTED BY (3) STUDS OR LESS ARE TO HAVE 1 1/2" MINIMUM BEARING (UNO). ALL BEAMS OR GIRDER TRUSSES PERPENDICULAR TO WALL AND SUPPORTED BY MORE THAN (3) STUDS OR OTHER NOTED COLUMN ARE TO BEAR FULLY ON SUPPORT COLUMN FOR ENTIRE WALL DEPTH (UNO). BEAM ENDS THAT BUTT INTO ONE ANOTHER ARE TO EACH BEAR EQUAL LENGTHS (UNO).
- FLITCH BEAMS SHALL BE BOLTED TOGETHER USING 1/2" DIAMETER BOLTS (ASTM A307) WITH WASHERS PLACED AT THREADED END OF BOLT. BOLTS SHALL BE SPACED AT 24" CENTERS (MAXIMUM), AND STAGGERED AT TOP AND BOTTOM OF BEAM (2" EDGE DISTANCE) WITH (2) BOLTS LOCATED AT 6" FROM EACH END (UNO).
- ALL I-JOIST OR TRUSS LAYOUTS ARE TO BE IN COMPLIANCE WITH THE OVERALL DESIGN SPECIFIED ON THE PLANS. ALL DEVIATIONS ARE TO BE BROUGHT TO THE ATTENTION OF THE ENGINEER OF RECORD PRIOR TO INSTALLATION.
- BRACED WALL PANELS SHALL BE CONSTRUCTED ACCORDING TO THE NORTH CAROLINA RESIDENTIAL CODE 2018 EDITION WALL BRACING CRITERIA. THE AMOUNT, LENGTH, AND LOCATION OF BRACING SHALL COMPLY WITH ALL APPLICABLE TABLES IN SECTION R602.10.
- PROVIDE DOUBLE JOIST UNDER ALL WALLS PARALLEL TO FLOOR JOISTS. PROVIDE SUPPORT UNDER ALL WALLS PARALLEL TO FLOOR TRUSSES OR I-JOISTS PER MANUFACTURER'S SPECIFICATIONS. INSTALL BLOCKING BETWEEN JOISTS OR TRUSSES FOR POINT LOAD SUPPORT FOR ALL POINT LOADS ALONG OFFSET LOAD LINES.
- FOR ALL HEADERS SUPPORTING BRICK VENEER THAT ARE LESS THAN 8'-0" IN LENGTH, REST A 6" x 4" x 5/16" STEEL ANGLE WITH 6" MINIMUM EMBEDMENT AT SIDES FOR BRICK SUPPORT (UNO). FOR ALL HEADERS 8'-0" AND GREATER IN LENGTH, BOLT A 6" x 4" x 5/16" STEEL ANGLE TO HEADER WITH 1/2" LAG SCREWS AT 12" O.C. STAGGERED FOR BRICK SUPPORT. FOR ALL BRICK SUPPORT AT ROOF LINES, BOLT A 6" x 4" x 5/16" STEEL ANGLE TO (2) 2 x 10 BLOCKING INSTALLED w/ (4) 12d NAILS EA. PLY BETWEEN WALL STUDS WITH (2) ROWS OF 1/2" LAG SCREWS AT 12" O.C. STAGGERED AND IN ACCORDANCE WITH SECTION R703.2(1) OF THE NRC, 2018 EDITION.
- FOR STICK FRAMED ROOFS, CIRCLES DENOTE (3) 2 x 4 POSTS FOR ROOF MEMBER SUPPORT. HIP SPLICES ARE TO BE SPACED A MINIMUM OF 8'-0". FASTEN MEMBERS WITH THREE ROWS OF 12d NAILS AT 16" O.C. FRAME DORMER WALLS ON TOP OF DOUBLE OR TRIPLE RAFTERS AS SHOWN (UNO).
- FOR TRUSSED ROOFS, FRAME DORMER WALLS ON TOP OF 2 x 4 LADDER FRAMING AT 24" O.C. BETWEEN ADJACENT ROOF TRUSSES. STICK FRAME OVER-FRAMED ROOF SECTIONS WITH 2 x 8 RIDGES, 2 x 6 RAFTERS AT 16" O.C. AND FLAT 2 x 10 VALLEYS (UNO).
- ALL 4 x 4 AND 6 x 6 POSTS TO BE INSTALLED WITH 100 LB CAPACITY UPLIFT CONNECTORS TOP AND BOTTOM (UNO). POSTS MAY BE SECURED USING ONE SIMPSON 16 OR L7512 UPLIFT CONNECTOR FASTENED TO THE BAND AT THE BOTTOM AND THE BEAM AT THE TOP OF EACH POST. ONE 16" SECTION OF SIMPSON C516 COIL STRAPPING WITH (8) 8d HDG NAILS AT EACH END MAY BE USED IN LIEU OF EACH TWIST STRAP IF DESIRED. FOR MASONRY OR CONCRETE FOUNDATION USE SIMPSON POST BASE.



11/2/2020

J.S. THOMPSON ENGINEERING, INC
 606 WADE AVE., SUITE 104 RALEIGH, NC 27605
 PHONE: (919) 789-9919 FAX: (919) 789-9921
 N.C. LICENSE NO.: C-1733

120 MPH - 130 MPH ULTIMATE DESIGN WIND SPEED
 STANDARD STRUCTURAL NOTES

DATE: NOVEMBER 14, 2018
SCALE: 1/4" = 1'-0"
DRAWN BY: JES
ENGINEERED BY: JST

S-0
 STRUCTURAL NOTES