

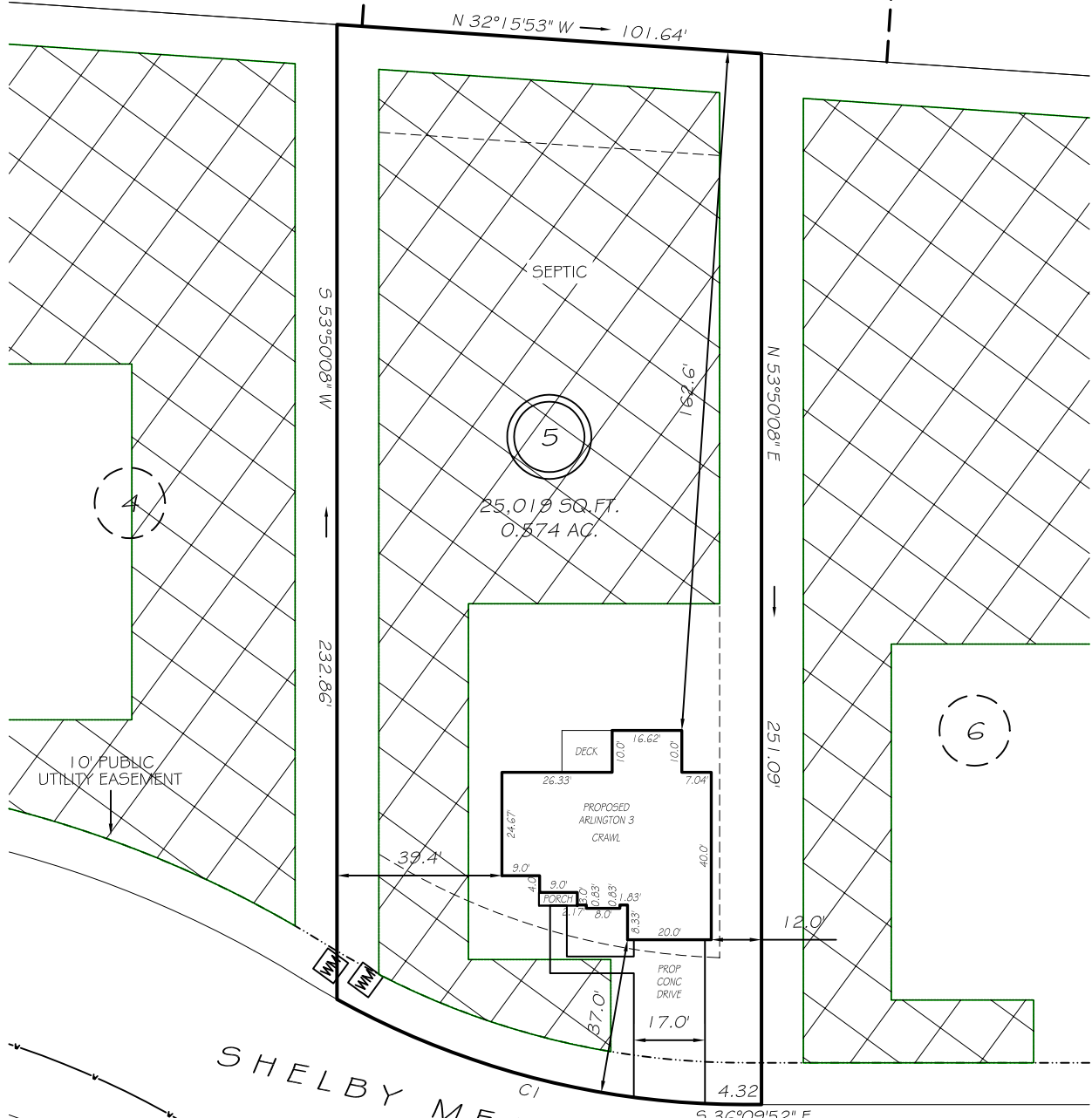
I, MICHAEL P. GRIFFIN, certify that under my direction and supervision this map was drawn from an actual field survey; that the error of closure of the survey as calculated by coordinates is 1: 10,000+; that the area shown hereon was calculated by coordinates.

Witness my hand and seal this day of MONTH 2024.

BM 2023 PAGE 248-249
HARNETT CO. REGISTRY

JOHNNY C. CHRISCOE, JR.
D.B. 2074, PG. 133
LOT 12
PIN 0663-60-8629

ANTHONY L. GRAHAM
D.B. 3165, PG. 677
LOT 11
PIN 0663-60-7850



IMPERVIOUS AREAS

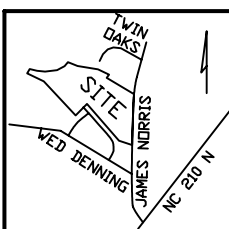
HOUSE	1862 SQ. FT.
DRIVE & WALKS	784 SQ. FT.
PATIO	0 SQ. FT.
TOTAL	2646 SQ. FT.
ALLOWED	4130 SQ. FT.
CI R=200.00' L=101.37' S21°38'40"E 100.29'	

ZONING RA-30 SETBACKS

FRONT	35'
REAR	25'
SIDE	10'
CORNER SIDE	20'

LEGEND

EIP	EXISTING IRON PIPE	FES	FLARED END SECTION
IPS	IRON PIPE SET	WM	WATER METER
RAW	RIGHT OF WAY	CO	CLEAN OUT
N/F	NOW OR FORMERLY	FH	FIRE HYDRANT
EIS	EXISTING IRON STAKE	CB	CATCH BASIN



P R E L I M I N A R Y
NOT FOR RECORDATION,
SALES OR CONVEYANCE



GRIFFIN LAND SURVEYING, INC.
P.O. BOX 148
FUQUAY-VARINA, NC 27526
(919) - 567 - 1963

PLOT PLAN FOR DRB HOMES

HONEYCUTT HILLS
LOT 5
95 SHELBY MEADOW LANE
ANGIER, N.C.

HARNETT COUNTY BLACK RIVER TOWNSHIP

DRAWN BY KDF	DATE 1/2/24
CHECKED BY MPG	SCALE 1" = 40'