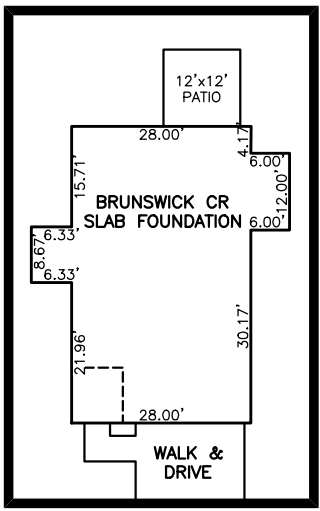
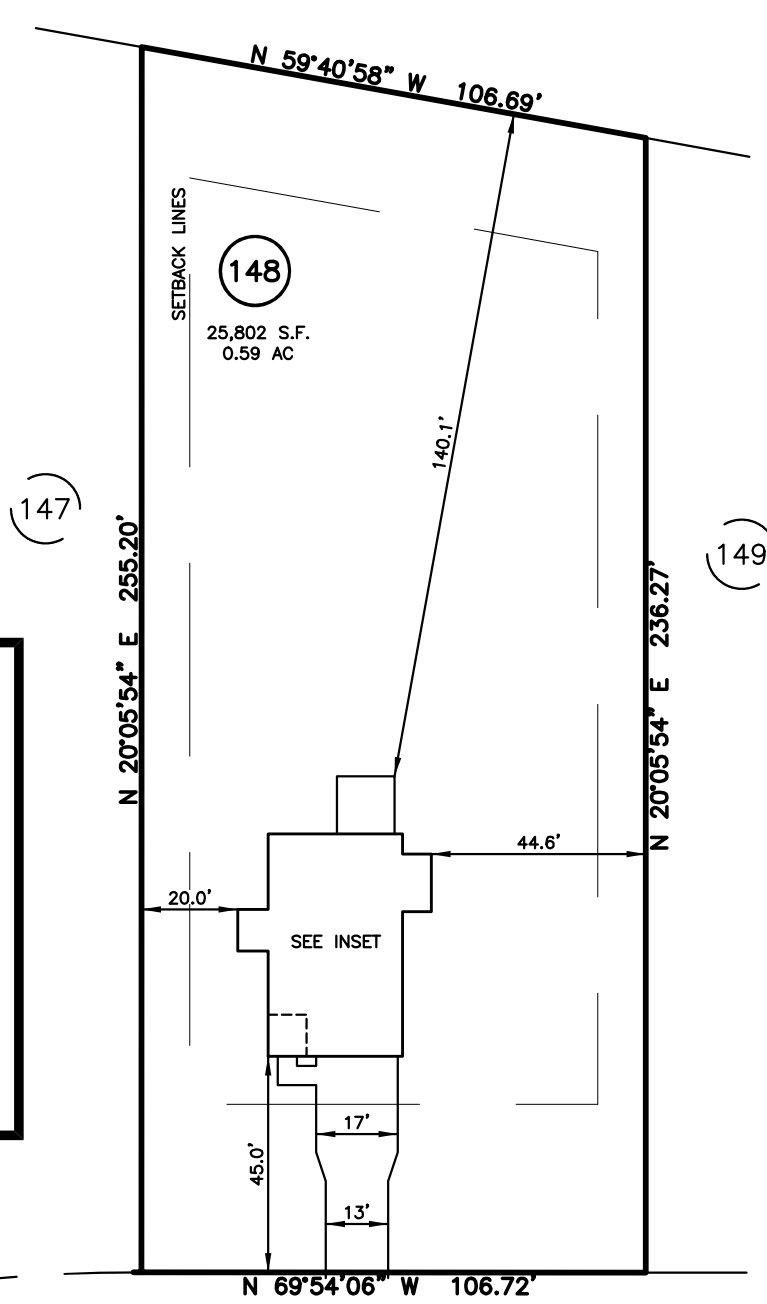


PLOT PLAN FOR
NEW HOME INC., LLC
 648 DUNCAN CREEK ROAD
 LOT 148, DUNCAN'S CREEK PHASE 1
 UPPER LITTLE CREEK TOWNSHIP, HARNETT COUNTY, NORTH CAROLINA

FUTURE PHASE 2 DEVELOPMENT



INSET SCALE: 1"=30'

LEGEND

- ⊠ AIR CONDITIONER
- BC BACK OF CURB
- BFP BACK FLOW PREVENTER
- CLEANOUT
- ⊞ CURB INLET
- DHS DRILL HOLE SET
- ECM EXISTING CONCRETE MONUMENT
- EDH EXISTING DRILL HOLE
- EIS EXISTING IRON STAKE
- EIP EXISTING IRON PIPE
- EM ELECTRIC METER
- EPK EXISTING PK NAIL
- ES ELECTRIC STUB
- FLR FLARED END SECTION
- FH FIRE HYDRANT
- FOP FIBER OPTIC PEDESTAL
- GM GAS METER
- GUY GUY
- INV. INVERT
- IPS IRON PIPE SET
- IRS IRON ROD SET
- LP LIGHT POLE
- MNS MAGNETIC NAIL SET
- MS MANHOLE SANITARY SEWER
- MSW MANHOLE STORM SEWER
- OHW OVERHEAD WIRES
- PKS PK NAIL SET
- PNS POINT NOT SET
- RRS RAIL ROAD SPIKE
- TEP TELEPHONE PEDESTAL
- TRF TRANSFORMER
- CTP CABLE TV PEDESTAL
- UP UTILITY POLE
- WM WATER METER
- WV WATER VALVE
- YI YARD INLET
- () FIELD MEASUREMENT

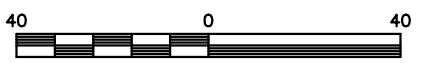
SETBACK INFO

- FRONT: 35'
- REAR: 25'
- SIDES: 10'
- CORNER SIDE: 20'

IMPERVIOUS SURFACES	S.F.
HOUSE	1,430
WALK & DRIVE	720
PORCH	150
TOTAL	2,300
PERCENT IMPERVIOUS	8.9%

REFERENCES:

P.B. 2022, PGS 594-596



SCALE: 1" = 40'

NOTES

1. THIS SURVEY SUBJECT TO ANY FACTS THAT MAY BE DISCLOSED BY A FULL AND ACCURATE TITLE SEARCH.
2. THIS MAP MAY NOT BE A CERTIFIED SURVEY AND HAS NOT BEEN REVIEWED BY A LOCAL GOVERNMENT AGENCY FOR COMPLIANCE WITH ANY APPLICABLE LAND DEVELOPMENT REGULATIONS AND HAS NOT BEEN REVIEWED FOR COMPLIANCE WITH RECORDING REQUIREMENTS FOR PLATS.

PLOT PLAN
 PRELIMINARY PLAT- NOT FOR RECORDATION,
 CONVEYANCE OR SALES

REV CODE: 1.FLIP, 2.PLAN, 3.ROTATE, 4.MOVE, 5.SS
 6.SEVERAL OF ABOVE, 7.LAND FEATURE, 8. OTHER

REV1: JAN. 11, 2024(8)
 DATE: DEC. 15, 2023

F.B. _____

RWK, PA
ENGINEERING ~ SURVEYING
 CORPORATE LICENSE: C-1771
 101 W. MAIN ST., SUITE 202
 GARNER, NC 27529
 PHONE (919) 779-4854
 FAX (919) 779-4056