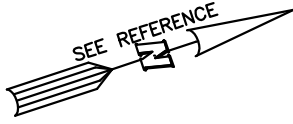
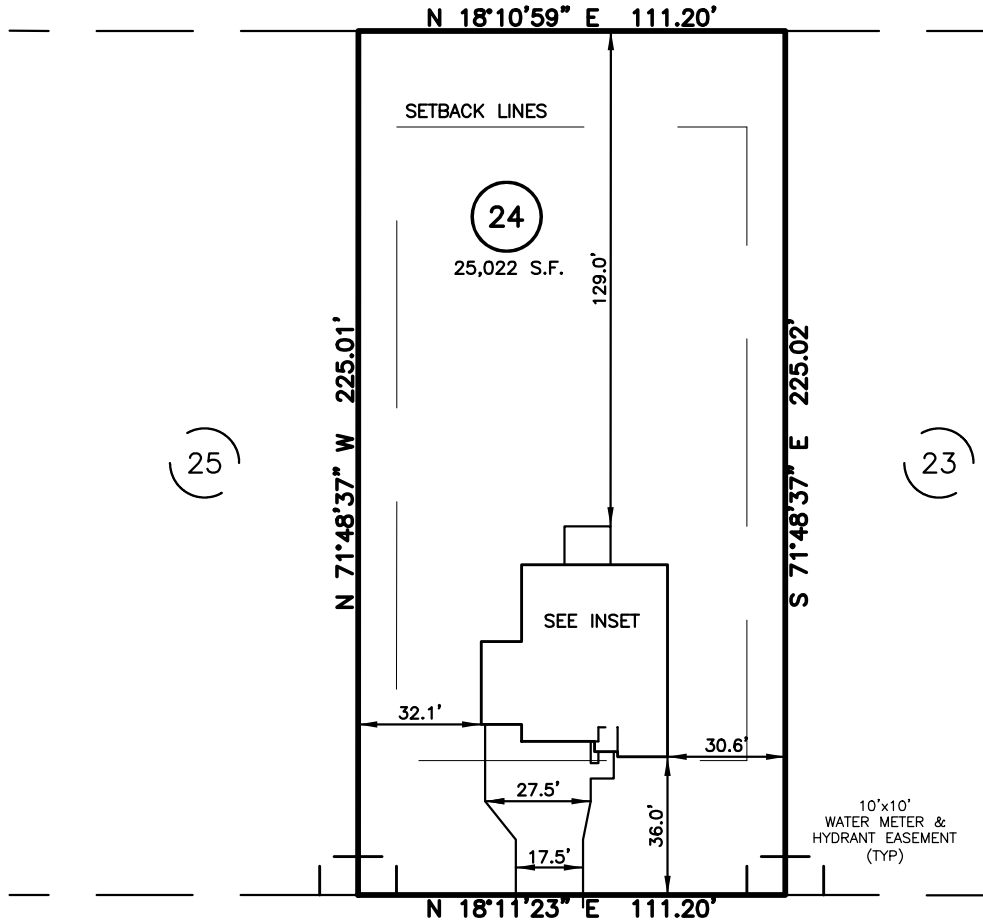


PLOT PLAN FOR
MATTAMY HOMES, LLC.
 138 DENALI DRIVE
 LOT 24, RIVERFALL SUBDIVISION PHASE ONE
 BLACK RIVER TOWNSHIP, HARNETT COUNTY, NORTH CAROLINA

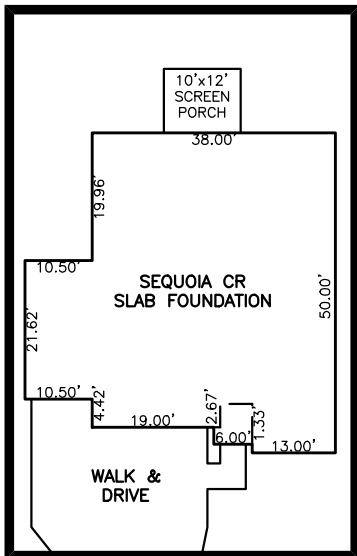


N/F
 CURRIN HEIRS LLC
 PIN:0682-18-3576
 DB 2612, PG 367



LEGEND

- △ AIR CONDITIONER
- BC BACK of CURB
- BFP BACK FLOW PREVENTER
- CLEANOUT
- CURB INLET
- DHS DRILL HOLE SET
- ECM EXISTING CONCRETE MONUMENT
- EDH EXISTING DRILL HOLE
- EIS EXISTING IRON STAKE
- EIP EXISTING IRON PIPE
- EM ELECTRIC METER
- EPK EXISTING PK NAIL
- ES ELECTRIC STUB
- FLA FLARED END SECTION
- FHY FIRE HYDRANT
- FOP FIBER OPTIC PEDESTAL
- GM GAS METER
- GUY GUY
- INV INVERT
- IPS IRON PIPE SET
- IRS IRON ROD SET
- LIGHT POLE
- MNS MAGNETIC NAIL SET
- MS MANHOLE SANITARY SEWER
- MSW MANHOLE STORM SEWER
- OHW OVERHEAD WIRES
- PKS PK NAIL SET
- PNS POINT NOT SET
- RRS RAIL ROAD SPIKE
- TP TELEPHONE PEDESTAL
- TR TRANSFORMER
- CTV CABLE TV PEDESTAL
- UP UTILITY POLE
- WM WATER METER
- WV WATER VALVE
- YI YARD INLET
- () FIELD MEASUREMENT



INSET SCALE: 1"=30'

DENALI DRIVE
 50' PUBLIC R/W

IMPERVIOUS SURFACES	
HOUSE	2,040 S.F
WALK & DRIVE	1,000 S.F
SCREEN PORCH	120 S.F
TOTAL	3,160 S.F
MAX. IMPERVIOUS	5,500 S.F

SETBACK INFO

FRONT: _____ 35'
 REAR: _____ 25'
 SIDES: _____ 10'

REFERENCES:

B.M. 2023, PG. 638



SCALE: 1" = 50'

NOTES

1. THIS SURVEY SUBJECT TO ANY FACTS THAT MAY BE DISCLOSED BY A FULL AND ACCURATE TITLE SEARCH.
2. THIS MAP MAY NOT BE A CERTIFIED SURVEY AND HAS NOT BEEN REVIEWED BY A LOCAL GOVERNMENT AGENCY FOR COMPLIANCE WITH ANY APPLICABLE LAND DEVELOPMENT REGULATIONS AND HAS NOT BEEN REVIEWED FOR COMPLIANCE WITH RECORDING REQUIREMENTS FOR PLATS.

PLOT PLAN
 PRELIMINARY PLAT- NOT FOR RECORDATION,
 CONVEYANCE OR SALES

REV CODE: 1.FLIP, 2.PLAN, 3.ROTATE, 4.MOVE, 5.SS
 6.SEVERAL OF ABOVE, 7.LAND FEATURE, 8. OTHER

REV1: DEC. 28, 2023(8)
 DATE: DEC. 13, 2023

F.B. _____

RWK, PA

ENGINEERING ~ SURVEYING

CORPORATE LICENSE: C-1771
 101 W. MAIN ST., SUITE 202
 GARNER, NC 27529
 PHONE (919) 779-4854
 FAX (919) 779-4056