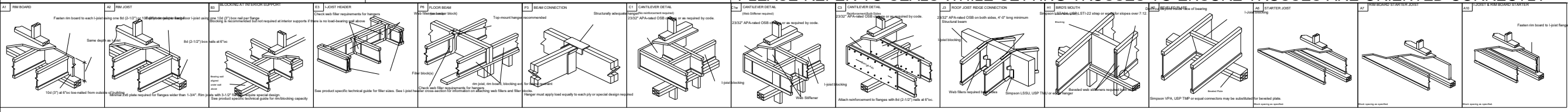


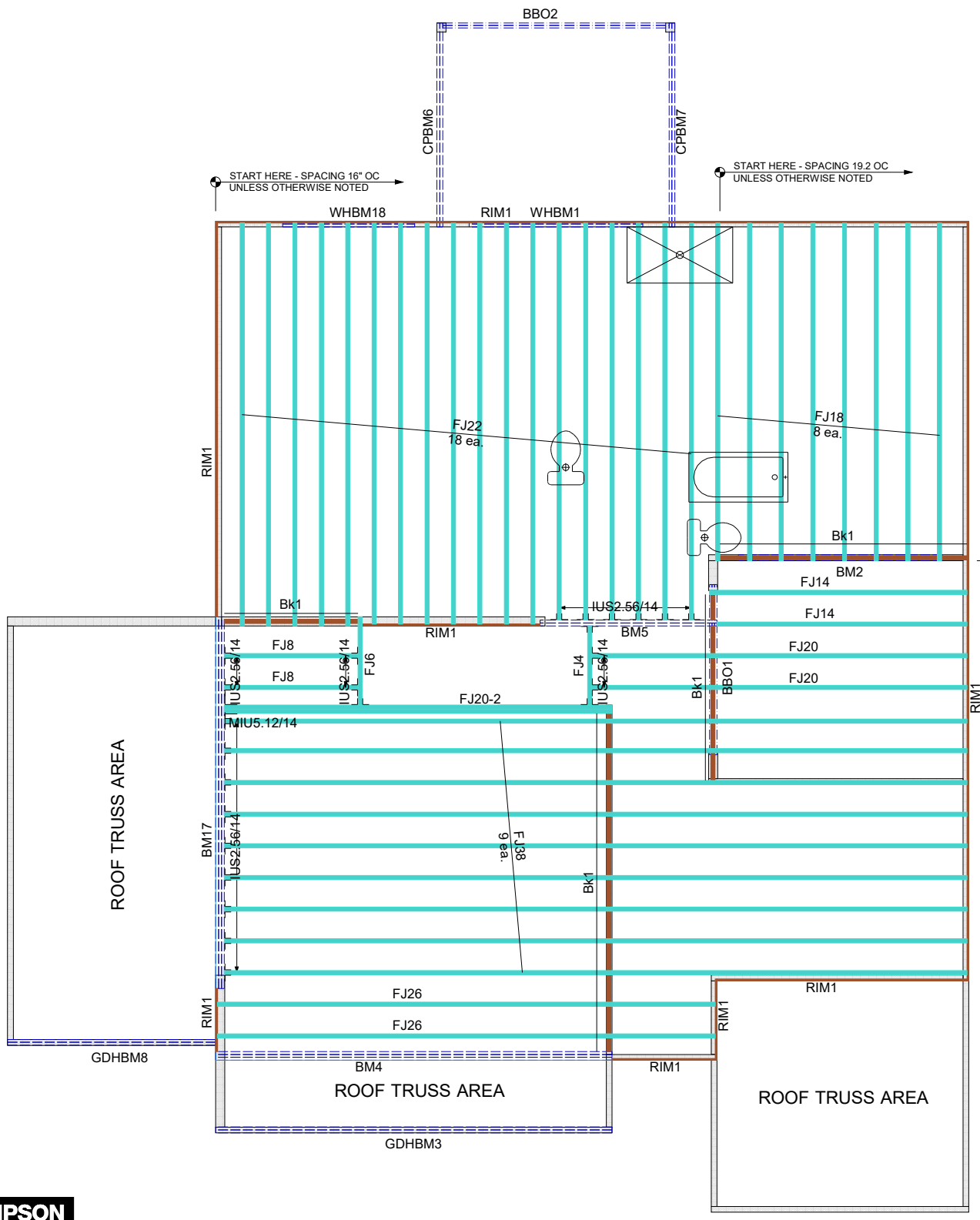
- All bracing, blocking, beams, purlins @ 2'0" o.c., ledger, etc. provided by others.
- Roof truss to roof truss connections provided by Riverside Roof Truss.
- Truss to building connections provided by others.

**Refer to Sealed drawings for connection detail of multiple ply trusses.**

**NOT ALL TRUSSES ARE SYMMETRICAL AND MAY NOT PERFORM CORRECTLY IF INSTALLED BACKWARDS. PLEASE REFER TO SEALS WHILE SETTING TRUSSES TO ENSURE TRUSSES ARE ORIENTED CORRECTLY**



**SHOP DRAWING APPROVAL**  
 THIS LAYOUT IS THE SOLE SOURCE FOR FABRICATION OF TRUSSES AND VOIDS ALL PREVIOUS ARCHITECTURAL OR OTHER TRUSS LAYOUTS. REVIEW AND APPROVAL OF THIS LAYOUT MUST BE RECEIVED BEFORE ANY TRUSSES WILL BE BUILT. VERIFY ALL CONDITIONS TO INSURE AGAINST CHANGES THAT WILL RESULT IN EXTRA CHARGES TO YOU.  
 REVIEWED BY: \_\_\_\_\_ APPROVED BY: \_\_\_\_\_ DATE: \_\_\_\_\_



Products				
PlotID	Length	Product	Plies	Net Qty
FJ38	38-00-00	14" NI-40x	1	9
FJ26	26-00-00	14" NI-40x	1	2
FJ22	22-00-00	14" NI-40x	1	18
FJ20	20-00-00	14" NI-40x	1	2
FJ20-2	20-00-00	14" NI-40x	2	2
FJ18	18-00-00	14" NI-40x	1	8
FJ14	14-00-00	14" NI-40x	1	2
FJ8	8-00-00	14" NI-40x	1	2
FJ6	6-00-00	14" NI-40x	1	1
FJ4	4-00-00	14" NI-40x	1	1
BM2	12-00-00	1 3/4" x 9 1/4" (2.0E 3100) LVL	2	2
CPBM6	12-00-00	1 3/4" x 9 1/4" (2.0E 3100) LVL	2	2
CPBM7	12-00-00	1 3/4" x 9 1/4" (2.0E 3100) LVL	2	2
WHBM18	8-00-00	1 3/4" x 9 1/4" (2.0E 3100) LVL	2	2
GDHBM3	20-00-00	1 3/4" x 11 7/8" (2.0E 3100) LVL	2	2
GDHBM8	12-00-00	1 3/4" x 11 7/8" (2.0E 3100) LVL	2	2
WHBM1	10-00-00	1 3/4" x 11 7/8" (2.0E 3100) LVL	2	2
BM4	22-00-00	1 3/4" x 14" (2.0E 3100) LVL	3	3
BM5	10-00-00	1 3/4" x 14" (2.0E 3100) LVL	2	2
BM17	20-00-00	1 3/4" x 16" (2.0E 3100) LVL	3	3
RIM1	12-00-00	1 1/8" x 14" APA Rim Board	1	11
Bk1	40-00-00	14" NI-40x	1	1

Connector Summary		
Qty	Manuf	Product
7	Simpson	IUS2.56/14
2	Simpson	IUS2.56/14
11	Simpson	IUS2.56/14
4	Simpson	IUS2.56/14
1	Simpson	MIU5.12/14

**Hanger Conversion Chart**

Client:	MATTAMY HOMES
Job Name:	SEQUOIA - CRAFTSMAN - 3-CAR
Model:	EWP 2ND FLOOR
Lot #:	24
Order #:	23-7323-B
Subdivision:	C Walden
Designer:	R S
Date:	12/18/2023

733 RIVER PARK DRIVE  
 DANVILLE, VA 24540  
 (434) 793-0217  
 FAX: (434) 799-8767

RIVERSIDE ROOF TRUSS, LLC

Roof Surface Area: 0 ft<sup>2</sup> Sq. Ft.  
 Floor Surface Area: 4298 ft<sup>2</sup> Sq. Ft.

