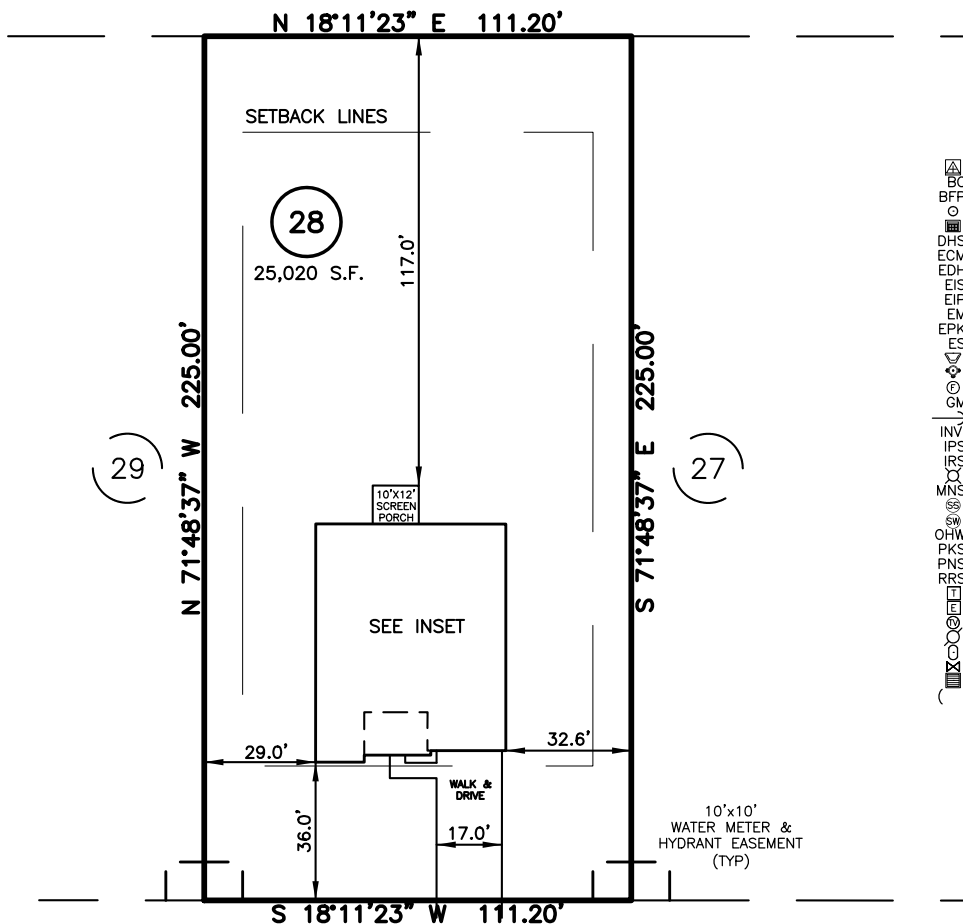
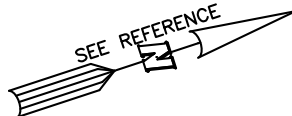


PLOT PLAN FOR  
**MATTAMY HOMES, LLC.**  
 DENALI DRIVE  
 LOT 28, RIVERFALL SUBDIVISION PHASE ONE  
 BLACK RIVER TOWNSHIP, HARNETT COUNTY, NORTH CAROLINA

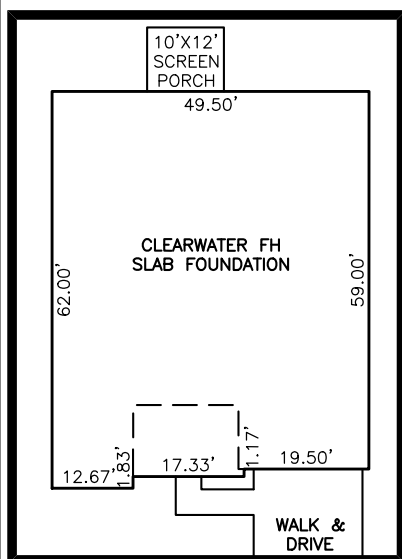
N/F  
 CURRIN HEIRS LLC  
 PIN:0682-18-3576  
 DB 2612, PG 367



**LEGEND**

- ⊠ AIR CONDITIONER
- BC BACK OF CURB
- BFP BACK FLOW PREVENTER
- CLEANOUT
- ⊞ CURB INLET
- DHS DRILL HOLE SET
- ECM EXISTING CONCRETE MONUMENT
- EDH EXISTING DRILL HOLE
- EIS EXISTING IRON STAKE
- EIP EXISTING IRON PIPE
- EM ELECTRIC METER
- EPK EXISTING PK NAIL
- ES ELECTRIC STUB
- ▽ FLARED END SECTION
- ⊞ FIRE HYDRANT
- ⊞ FIBER OPTIC PEDESTAL
- GM GAS METER
- GUY
- INV. INVERT
- IPS IRON PIPE SET
- IRS IRON ROD SET
- LIGHT POLE
- MNS MAGNETIC NAIL SET
- ⊞ MANHOLE SANITARY SEWER
- ⊞ MANHOLE STORM SEWER
- OHV OVERHEAD WIRES
- PKS PK NAIL SET
- PNS POINT NOT SET
- RRS RAIL ROAD SPIKE
- ⊞ TELEPHONE PEDESTAL
- ⊞ TRANSFORMER
- ⊞ CABLE TV PEDESTAL
- UTILITY POLE
- WATER METER
- WATER VALVE
- ⊞ YARD INLET
- ( ) FIELD MEASUREMENT

**DENALI DRIVE**  
 50' PUBLIC R/W



INSET SCALE: 1"=30'

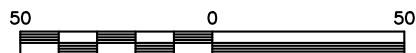
**REFERENCES:**

PRELIMINARY PLAT  
 RIVERFALL PHASE 1  
 FOR MATTAMY HOMES, LLC  
 PROVIDED BY LARRY KING  
 &  
 ASSOCIATES  
 DATED 10/13/2023  
 (NOT RECORDED)

**SETBACK INFO**

FRONT: \_\_\_\_\_ 35'  
 REAR: \_\_\_\_\_ 25'  
 SIDES: \_\_\_\_\_ 10'

IMPERVIOUS SURFACES	
HOUSE	2,980 S.F
WALK & DRIVE	730 S.F
SCREEN PORCH	120 S.F
TOTAL	3,830 S.F
MAX. IMPERVIOUS	5,500 S.F



SCALE: 1" = 50'

**NOTES**

1. THIS SURVEY SUBJECT TO ANY FACTS THAT MAY BE DISCLOSED BY A FULL AND ACCURATE TITLE SEARCH.
2. THIS MAP MAY NOT BE A CERTIFIED SURVEY AND HAS NOT BEEN REVIEWED BY A LOCAL GOVERNMENT AGENCY FOR COMPLIANCE WITH ANY APPLICABLE LAND DEVELOPMENT REGULATIONS AND HAS NOT BEEN REVIEWED FOR COMPLIANCE WITH RECORDING REQUIREMENTS FOR PLATS.

PLOT PLAN  
 PRELIMINARY PLAT- NOT FOR RECORDATION,  
 CONVEYANCE OR SALES

REV CODE: 1.FLIP, 2.PLAN, 3.ROTATE, 4.MOVE, 5.SS  
 6.SEVERAL OF ABOVE, 7.LAND FEATURE, 8. OTHER

DATE: DEC. 13, 2023

F.B. \_\_\_\_\_

**RWK, PA**  
**ENGINEERING ~ SURVEYING**  
 CORPORATE LICENSE: C-1771  
 101 W. MAIN ST., SUITE 202  
 GARNER, NC 27529  
 PHONE (919) 779-4854  
 FAX (919) 779-4056