

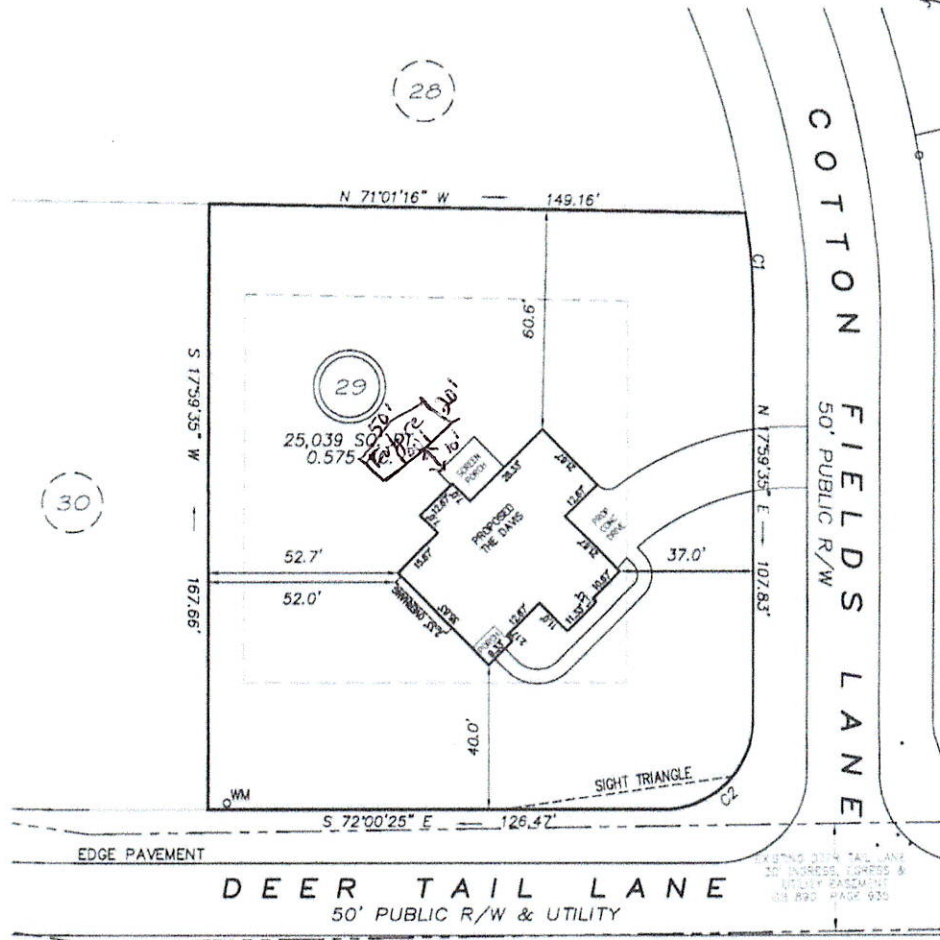
I, MICHAEL P. GRIFFIN, certify that under my direction and supervision this map was drawn from an actual field survey; that the error of closure of the survey as calculated by coordinates is 1: 10,000+; that the area shown hereon was calculated by coordinates.

Witness my hand and seal this day of MONTH 2024.

**IMPERVIOUS DATA**

HOUSE	2093 SQ. FT.
SCREENED PORCH	165 SQ. FT.
DRIVE & WALKS	1164 SQ. FT.
TOTAL	3422 SQ. FT.
ALLOWED	7000 SQ. FT.

HARNETT CO. RECORDER  
 2023 JANES 2007-201



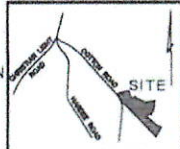
**SETBACKS**

FRONT	35'
REAR	25'
SIDE	10'
CORNER SIDE	20'

REVISION: ROTATE 1/4/23  
 C1 R=255.00' L=32.38' S13°52'12"W 32.35'  
 C2 R=25.00' L=39.27' S62°59'35"W 35.36'

**LEGEND**

<p><b>PRELIMINARY</b>          NOT FOR RECORDATION,          SALES OR CONVEYANCE</p>	EIP	EXISTING IRON PIPE	FES	FLARED END SECTION
	IPS	IRON PIPE SET	WM	WATER METER
	R/W	RIGHT OF WAY	CO	CLEAN OUT
	N/F	NOW OR FORMERLY	FH	FIRE HYDRANT
	EIS	EXISTING IRON STAKE	CB	CATCH BASIN



**GLS** GRIFFIN LAND SURVEYING, INC.  
 P.O. BOX 148  
 FUQUAY-VARINA, NC 27526  
 (919) - 567-1983

**PLOT PLAN**  
 FOR  
**NCT SPECIALTY CONTRACTING, INC.**  
 COTTON FARMS  
 LOT 29  
 COTTON FIELD LANE  
 FUQUAY VARINA, N.C.  
 HARNETT COUNTY HECTOR'S CREEK TOWNSHIP

DRAWN BY <b>KDF</b>	DATE <b>1/3/24</b>
CHECKED BY <b>MPG</b>	SCALE <b>1" = 40'</b>