

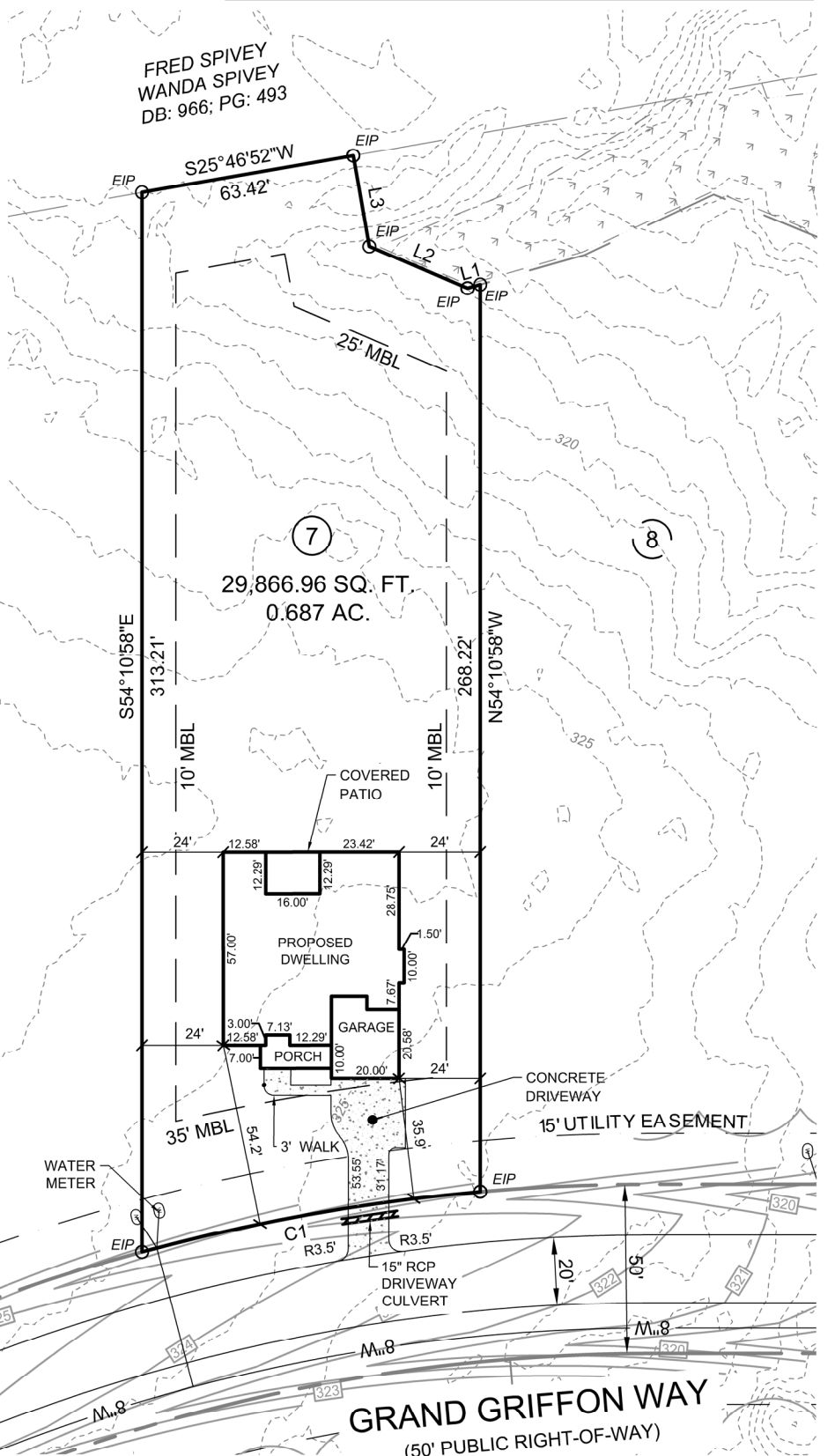
NOTES:

1. THIS PROPERTY IS NOT LOCATED WITHIN A FEMA SPECIAL FLOOD HAZARD AREA AS SHOWN ON DFIRM MAP 3720064000J AND 3720054800J, DATED OCTOBER 3, 2006.
2. ALL DISTANCES ARE HORIZONTAL GROUND DISTANCES.
3. NO TITLE SEARCH WAS PERFORMED FOR THIS PLOT PLAN.
4. AREAS CALCULATED BY COORDINATE GEOMETRY.

CURVE TABLE					
CURVE	RADIUS	LENGTH	DELTA	CHORD BEARING	CHORD
C1	575.00	101.70	10°08'03"	N25°43'39"E	101.57

LEGEND:

○	EXISTING REBAR
○	EXISTING IRON PIPE
⊗	EXISTING PK NAIL
○	NO POINT SET
○	N.C. GEODETIC MONUMENT
□	EX. CONCRETE MONUMENT
○	REBAR SET
●	PK NAIL SET
■	CONCRETE MONUMENT SET
◆	POWER POLE
●	LIGHT POLE



29,866.96 SQ. FT.
0.687 AC.

LINE TABLE		
LINE	LENGTH	BEARING
L1	3.90	S20°00'36"W
L2	31.52	S58°48'06"W
L3	27.43	N64°12'28"W

SETBACKS:

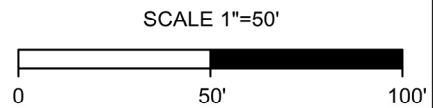
FRONT YARD:	35 FT.
SIDE YARD:	10 FT.
CNR. SIDE YARD:	20 FT.
REAR YARD:	25 FT.

REFERENCES:

DB: 4204; PG: 1014
MB: 2022; PG: 354

IMPERVIOUS AREA:

HOUSE/PORCH:	3129.29 SQ. FT.
COVERED PATIO:	196.64 SQ. FT.
DRIVEWAY/WALK:	924.41 SQ. FT.
TOTAL:	4250.34 SQ. FT.



CAROLINA
Land Development Group

1304 N. Respass Street
Washington, NC 27889
Phone: (919) 608-9390
Email: spencer@CLDGCORP.com
C-2743

SEAL:

PROJECT: PLOT PLAN FOR: LOT 7 GRIFFON POINTE SUBDIVISION PHASE I (MADELINE IIC - FLOOR PLAN)		
LOCATION: 143 GRAND GRIFFON WAY, LILLINGTON, N.C. 27546 UPPER LITTLE RIVER TOWNSHIP, HARNETT COUNTY		
DRAWN BY: RG	PIN NO: 0640-11-7864	DATE: 04-02-2024
CHECKED BY: SBT	PROJECT NO: 2022010	SCALE: 1" = 50'