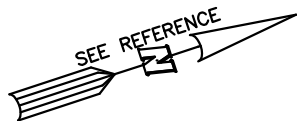
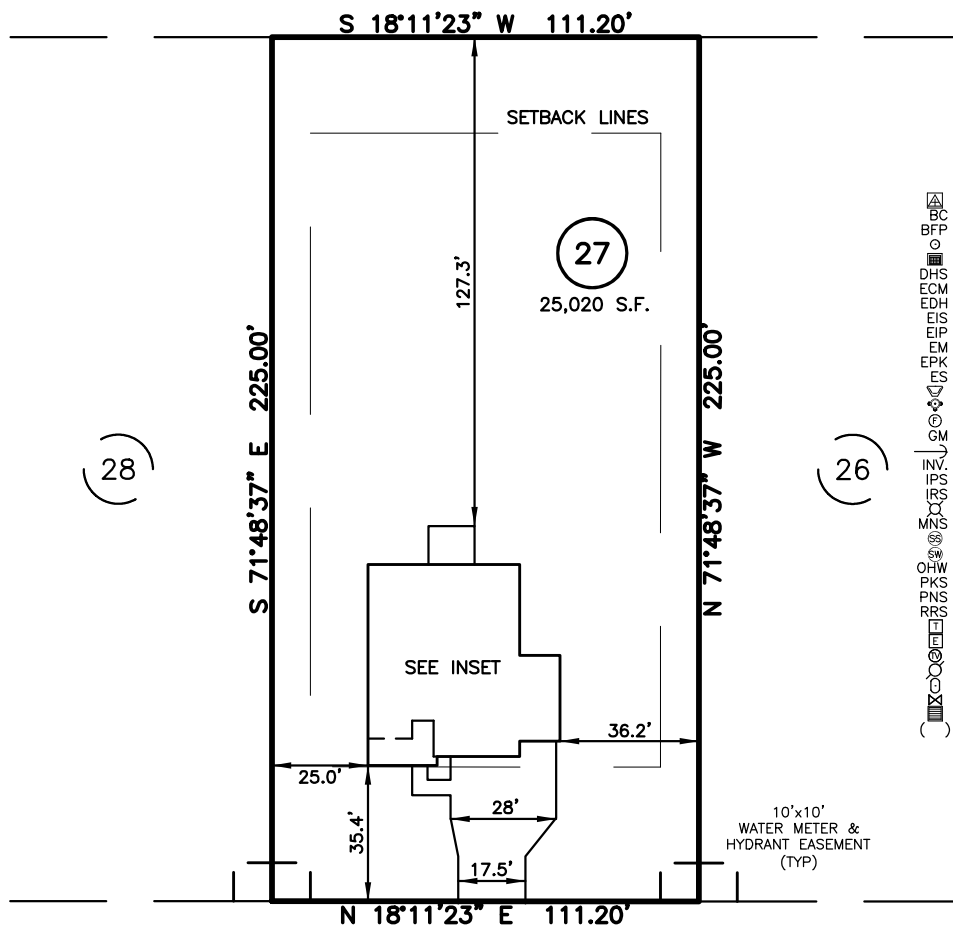


PLOT PLAN FOR  
**MATTAMY HOMES, LLC.**  
 202 DENALI DRIVE  
 LOT 27, RIVERFALL SUBDIVISION PHASE ONE  
 BLACK RIVER TOWNSHIP, HARNETT COUNTY, NORTH CAROLINA

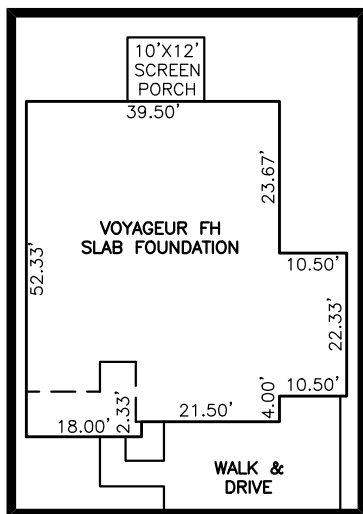


N/F  
 CURRIN HEIRS LLC  
 PIN:0682-18-3576  
 DB 2612, PG 367



**LEGEND**

- △ AIR CONDITIONER
- BC BACK of CURB
- BFP BACK FLOW PREVENTER
- CLEANOUT
- CURB INLET
- DHS DRILL HOLE SET
- EDM EXISTING CONCRETE MONUMENT
- EDH EXISTING DRILL HOLE
- EIS EXISTING IRON STAKE
- EIP EXISTING IRON PIPE
- EM ELECTRIC METER
- EPK EXISTING PK NAIL
- ES ELECTRIC STUB
- FLD FLARED END SECTION
- FH FIRE HYDRANT
- FOP FIBER OPTIC PEDESTAL
- GM GAS METER
- GUY GUY
- INV INVERT
- IPS IRON PIPE SET
- IRS IRON ROD SET
- LP LIGHT POLE
- MNS MAGNETIC NAIL SET
- MS MANHOLE SANITARY SEWER
- MSW MANHOLE STORM SEWER
- OHW OVERHEAD WIRES
- PKS PK NAIL SET
- PNS POINT NOT SET
- RRS RAIL ROAD SPIKE
- TP TELEPHONE PEDESTAL
- TRF TRANSFORMER
- CTV CABLE TV PEDESTAL
- UP UTILITY POLE
- WM WATER METER
- WV WATER VALVE
- YI YARD INLET
- ( ) FIELD MEASUREMENT



INSET SCALE: 1"=30'

**DENALI DRIVE**  
 50' PUBLIC R/W

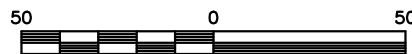
**REFERENCES:**

B.M. 2023, PG. 638

IMPERVIOUS SURFACES	
HOUSE	2,260 S.F.
WALK & DRIVE	970 S.F.
SCREEN PORCH	120 S.F.
<b>TOTAL</b>	<b>3,350 S.F.</b>
<b>MAX. IMPERVIOUS</b>	<b>5,500 S.F.</b>

**SETBACK INFO**

FRONT: \_\_\_\_\_ 35'  
 REAR: \_\_\_\_\_ 25'  
 SIDES: \_\_\_\_\_ 10'



SCALE: 1" = 50'

**NOTES**

1. THIS SURVEY SUBJECT TO ANY FACTS THAT MAY BE DISCLOSED BY A FULL AND ACCURATE TITLE SEARCH.
2. THIS MAP MAY NOT BE A CERTIFIED SURVEY AND HAS NOT BEEN REVIEWED BY A LOCAL GOVERNMENT AGENCY FOR COMPLIANCE WITH ANY APPLICABLE LAND DEVELOPMENT REGULATIONS AND HAS NOT BEEN REVIEWED FOR COMPLIANCE WITH RECORDING REQUIREMENTS FOR PLATS.

PLOT PLAN  
 PRELIMINARY PLAT- NOT FOR RECORDATION,  
 CONVEYANCE OR SALES

REV CODE: 1.FLIP, 2.PLAN, 3.ROTATE, 4.MOVE, 5.SS  
 6.SEVERAL OF ABOVE, 7.LAND FEATURE, 8. OTHER

REV1: DEC. 28, 2023(4)  
 DATE: DEC. 13, 2023

F.B. \_\_\_\_\_

**RWK, PA**  
**ENGINEERING ~ SURVEYING**  
 CORPORATE LICENSE: C-1771  
 101 W. MAIN ST., SUITE 202  
 GARNER, NC 27529  
 PHONE (919) 779-4854  
 FAX (919) 779-4056