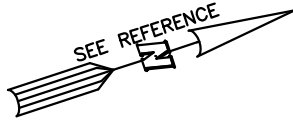
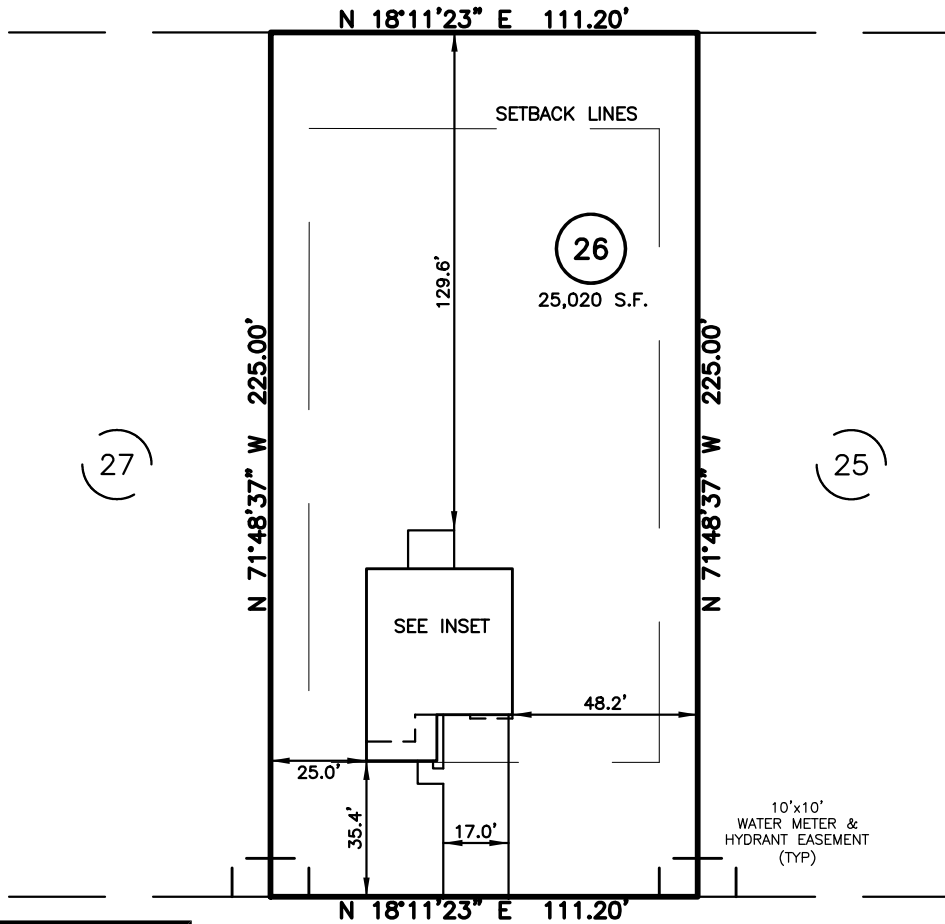


PLOT PLAN FOR
MATTAMY HOMES, LLC.
 180 DENALI DRIVE
 LOT 26, RIVERFALL SUBDIVISION PHASE ONE
 BLACK RIVER TOWNSHIP, HARNETT COUNTY, NORTH CAROLINA



N/F
 CURRIN HEIRS LLC
 PIN:0682-18-3576
 DB 2612, PG 367

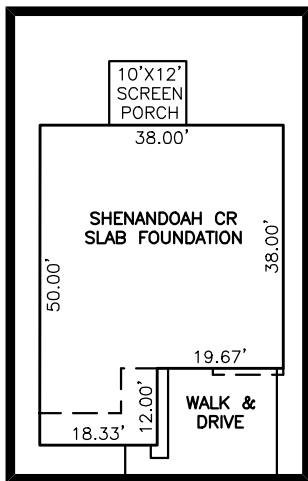


LEGEND

- △ AIR CONDITIONER
- BC BACK of CURB
- BFP BACK FLOW PREVENTER
- CLEANOUT
- CURB INLET
- DHS DRILL HOLE SET
- EDM EXISTING CONCRETE MONUMENT
- EDH EXISTING DRILL HOLE
- EIS EXISTING IRON STAKE
- EIP EXISTING IRON PIPE
- EM ELECTRIC METER
- EPK EXISTING PK NAIL
- ES ELECTRIC STUB
- ES FLARED END SECTION
- ⊕ FIRE HYDRANT
- ⊕ FIBER OPTIC PEDESTAL
- GM GAS METER
- GUY
- INV. INVERT
- IPS IRON PIPE SET
- IRS IRON ROD SET
- LIGHT POLE
- MNS MAGNETIC NAIL SET
- ⊕ MANHOLE SANITARY SEWER
- ⊕ MANHOLE STORM SEWER
- OHW OVERHEAD WIRES
- PKS PK NAIL SET
- PNS POINT NOT SET
- RRS RAIL ROAD SPIKE
- ⊕ TELEPHONE PEDESTAL
- ⊕ TRANSFORMER
- ⊕ CABLE TV PEDESTAL
- ⊕ UTILITY POLE
- ⊕ WATER METER
- ⊕ WATER VALVE
- ⊕ YARD INLET
- () FIELD MEASUREMENT

(27)

(25)



INSET SCALE: 1"=30'

DENALI DRIVE
 50' PUBLIC R/W

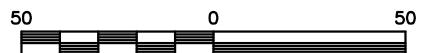
REFERENCES:

B.M. 2023, PG. 638

IMPERVIOUS SURFACES	
HOUSE	1,660 S.F.
WALK & DRIVE	840 S.F.
SCREEN PORCH	120 S.F.
TOTAL	2,620 S.F.
MAX. IMPERVIOUS	5,500 S.F.

SETBACK INFO

FRONT: _____ 35'
 REAR: _____ 25'
 SIDES: _____ 10'



SCALE: 1" = 50'

NOTES

1. THIS SURVEY SUBJECT TO ANY FACTS THAT MAY BE DISCLOSED BY A FULL AND ACCURATE TITLE SEARCH.
2. THIS MAP MAY NOT BE A CERTIFIED SURVEY AND HAS NOT BEEN REVIEWED BY A LOCAL GOVERNMENT AGENCY FOR COMPLIANCE WITH ANY APPLICABLE LAND DEVELOPMENT REGULATIONS AND HAS NOT BEEN REVIEWED FOR COMPLIANCE WITH RECORDING REQUIREMENTS FOR PLATS.

PLOT PLAN
 PRELIMINARY PLAT- NOT FOR RECORDATION,
 CONVEYANCE OR SALES

REV CODE: 1.FLIP, 2.PLAN, 3.ROTATE, 4.MOVE, 5.SS
 6.SEVERAL OF ABOVE, 7.LAND FEATURE, 8. OTHER

REV1: DEC. 28, 2023(4)
 DATE: DEC. 13, 2023

F.B. _____

RWK, PA

ENGINEERING ~ SURVEYING

CORPORATE LICENSE: C-1771
 101 W. MAIN ST., SUITE 202
 GARNER, NC 27529
 PHONE (919) 779-4854
 FAX (919) 779-4056