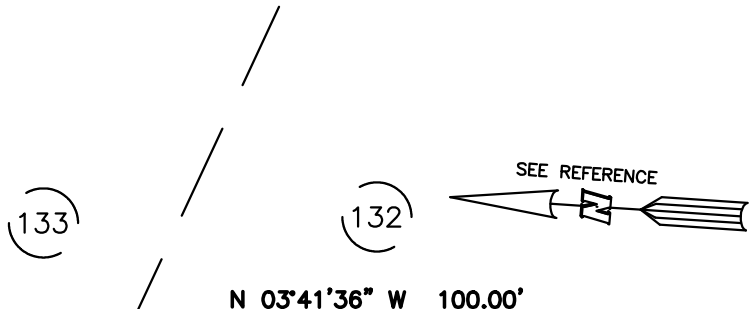
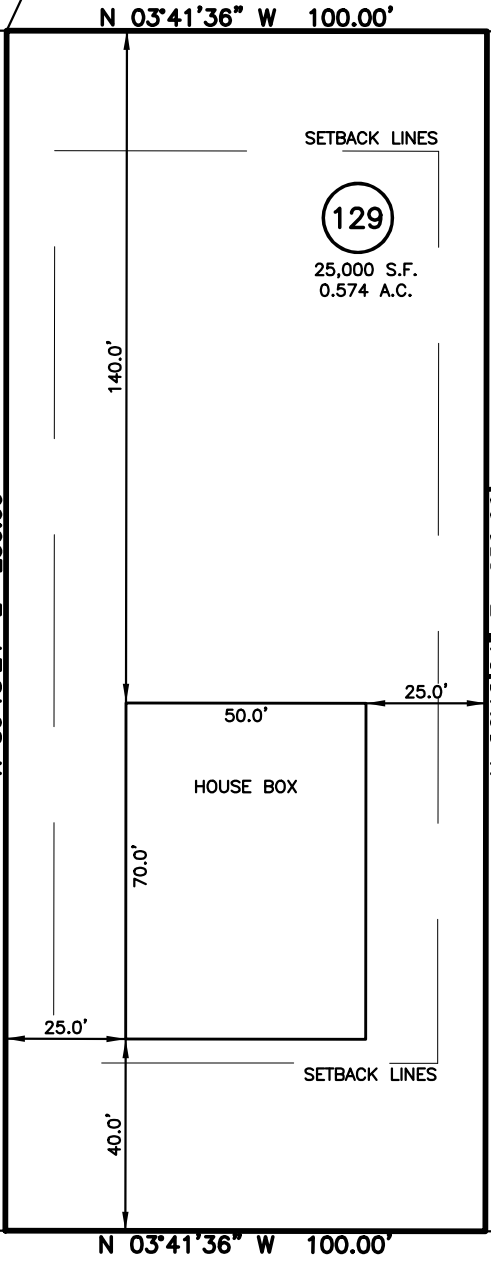


HOUSE FIT
NEW HOME, INC., LLC
 367 DUNCAN CREEK ROAD
 LOT 129, DUNCAN'S CREEK PHASE 1
 UPPER LITTLE CREEK TOWNSHIP, HARNETT COUNTY, NORTH CAROLINA



LEGEND

- ⊠ AIR CONDITIONER
- ⊠ BC BACK of CURB
- ⊠ BFP BACK FLOW PREVENTER
- CLEANOUT
- ⊠ CURB INLET
- ⊠ DHS DRILL HOLE SET
- ⊠ ECM EXISTING CONCRETE MONUMENT
- ⊠ EDH EXISTING DRILL HOLE
- ⊠ EIS EXISTING IRON STAKE
- ⊠ EIP EXISTING IRON PIPE
- ⊠ EM ELECTRIC METER
- ⊠ EPK EXISTING PK NAIL
- ⊠ ES ELECTRIC STUB
- ⊠ FLARED END SECTION
- ⊠ FIRE HYDRANT
- ⊠ FIBER OPTIC PEDESTAL
- ⊠ GAS METER
- ⊠ GUY
- ⊠ INV INVERT
- ⊠ IPS IRON PIPE SET
- ⊠ IRS IRON ROD SET
- ⊠ LIGHT POLE
- ⊠ MNS MAGNETIC NAIL SET
- ⊠ MANHOLE SANITARY SEWER
- ⊠ MANHOLE STORM SEWER
- ⊠ OHW OVERHEAD WIRES
- ⊠ PKS PK NAIL SET
- ⊠ PMS POINT NOT SET
- ⊠ RRS RAIL ROAD SPIKE
- ⊠ TELEPHONE PEDESTAL
- ⊠ TRANSFORMER
- ⊠ CABLE TV PEDESTAL
- ⊠ UTILITY POLE
- ⊠ WATER METER
- ⊠ WATER VALVE
- ⊠ YARD INLET
- ⊠ FIELD MEASUREMENT



SETBACK INFO

FRONT:	_____	35'
REAR:	_____	25'
SIDES:	_____	10'
CORNER SIDE:	_____	20'

DUNCAN CREEK ROAD
 50' PUBLIC R/W

REFERENCES:
 P.B. 2022, PGS 594-596



SCALE: 1" = 40'

NOTES

1. THIS SURVEY SUBJECT TO ANY FACTS THAT MAY BE DISCLOSED BY A FULL AND ACCURATE TITLE SEARCH.
2. THIS MAP MAY NOT BE A CERTIFIED SURVEY AND HAS NOT BEEN REVIEWED BY A LOCAL GOVERNMENT AGENCY FOR COMPLIANCE WITH ANY APPLICABLE LAND DEVELOPMENT REGULATIONS AND HAS NOT BEEN REVIEWED FOR COMPLIANCE WITH RECORDING REQUIREMENTS FOR PLATS.

FOR REPRESENTATIVE PURPOSES ONLY
 NOT FOR PERMITTING, RECORDATION,
 CONVEYANCE OR SALES

HOUSE FIT
 ONLY

DATE: DEC. 15, 2023
 F.B. _____

RWK, PA
ENGINEERING ~ SURVEYING
 CORPORATE LICENSE: C-1771
 101 W. MAIN ST., SUITE 202
 GARNER, NC 27529
 PHONE (919) 779-4854
 FAX (919) 779-4056