

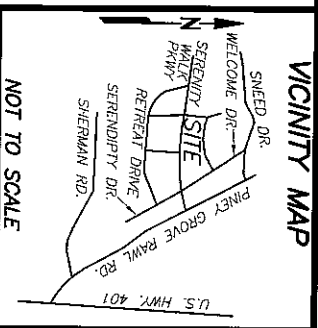
CURVE TABLE

CURVE	DELTA	RADIUS	ARC	CHORD	TANGENT	CHORD BRG
C1	46°36'43"	50.00'	40.68'	39.56'	21.54'	S 08°05'55" E

LINE TABLE

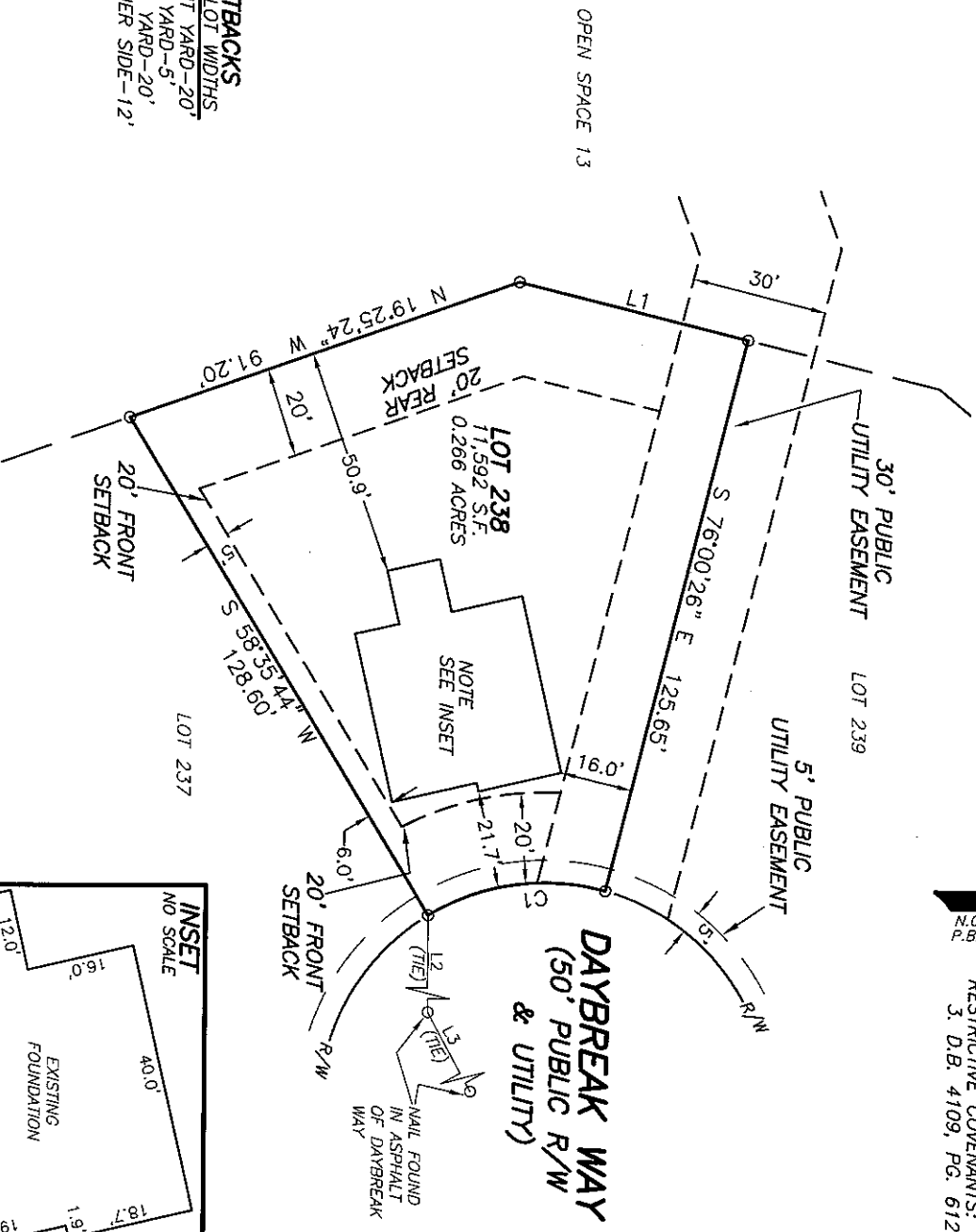
LINE	BEARING	DISTANCE
L1	N 13°59'34" E	52.10'
L2	N 89°41'29" E	113.24'
L3	N 61°18'02" E	83.33'

N
N.C. GRID NORTH NAD83 (2011)
P.B. 2023, PG. 483-493



NOT TO SCALE

- REFERENCES:
- D.B. 4209, PG. 2421
PIN: 0645-83-7015,000
PID: 08065502 0032 78
- NOTICE OF DEVELOPMENT GUIDELINES:
2. D.B. 4149, PG. 210
RESTRICTIVE COVENANTS:
3. D.B. 4109, PG. 612



SETBACKS
 >.43' LOT WIDTHS
 FRONT YARD-20'
 SIDE YARD-5'
 REAR YARD-20'
 CORNER SIDE-12'

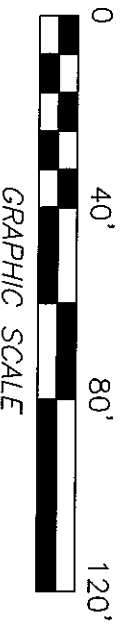
NOTES:

- ALL EASEMENTS, RIGHTS OF WAY AND BOUNDARY INFORMATION TAKEN FROM P.B. 2023, PG. 483-493 UNLESS OTHERWISE NOTED.
- PROPERTY IS SUBJECT TO ALL EASEMENTS AND RESTRICTIONS OF RECORD. NO TITLE EXAMINATION HAS BEEN DONE BY ROBINSON & PLANTE, P.C.

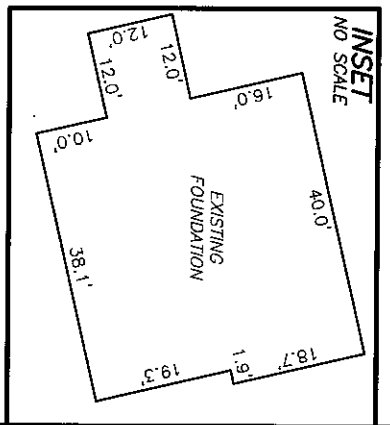
NOTE:
 RATIO OF PRECISION IS 1:110,000+, MISCLOSURE WAS DISTRIBUTED BY THE COMPASS METHOD. THE DISTANCES ON THIS MAP ARE ADJUSTED HORIZONTAL GROUND UNLESS NOTED OTHERWISE. ALL AREAS ARE CALCULATED BY COORDINATE COMPUTATION.

LOT 238 SERENITY SUBDIVISION
PHASE 2F
133 DAYBREAK WAY
HARNETT COUNTY
FUQUAY-VARINA, N.C. 27526

REFERENCE: PLAT BOOK 2023 PAGE 483-493.

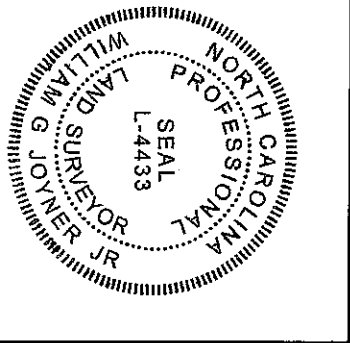


FOUNDATION SURVEY FOR
DREES HOMES



I CERTIFY THAT THIS MAP WAS DRAWN UNDER MY SUPERVISION FROM AN ACTUAL SURVEY MADE UNDER MY SUPERVISION. DESCRIPTION RECORDED IN REFERENCES AS SHOWN. THAT THE BOUNDARIES NOT SURVEYED ARE INDICATED AS DRAWN FROM INFORMATION IN THE RECORD. THAT THE RATIO OF PRECISION IS 1:110,000; AND THAT THIS MAP MEETS THE REQUIREMENTS OF THE STANDARDS OF PRACTICE FOR LAND SURVEYING IN NORTH CAROLINA (21 NCAC 56.16000), THIS 12th DAY OF JANUARY 2024.

William R. Joyner Jr.
 PROFESSIONAL LAND SURVEYOR L-4433



ROBINSON & PLANTE PC
 LAND SURVEYING
 C-2687
 970 TRINITY ROAD
 RALEIGH, N.C. 27607
 PHONE (919) 859-6030
 FAX (919) 859-6032

DATE: 1-11-24

SCALE: 1"=40'

FILE: STY1LOT238PFD