

PLOT PLAN FOR
NEW HOME, INC., LLC
 174 DUNCAN CREEK ROAD
 LOT 168, DUNCAN'S CREEK PHASE 1
 UPPER LITTLE CREEK TOWNSHIP, HARNETT COUNTY, NORTH CAROLINA



OPEN SPACE

N 78°33'20" E 102.90'

LEGEND

- △ AIR CONDITIONER
- BC BACK OF CURB
- BFP BACK FLOW PREVENTER
- CLEANOUT
- CURB INLET
- DHS DRILL HOLE SET
- ECM EXISTING CONCRETE MONUMENT
- EDH EXISTING DRILL HOLE
- EIS EXISTING IRON STAKE
- EIP EXISTING IRON PIPE
- EM ELECTRIC METER
- EPK EXISTING PK NAIL
- ES ELECTRIC STUB
- ▽ FLARED END SECTION
- ⊕ FIRE HYDRANT
- ⊕ FIBER OPTIC PEDESTAL
- ⊕ GAS METER
- GUY
- INV. INVERT
- IPS IRON PIPE SET
- IRS IRON ROD SET
- LIGHT POLE
- MNS MAGNETIC NAIL SET
- ⊕ MANHOLE SANITARY SEWER
- ⊕ MANHOLE STORM SEWER
- OHW OVERHEAD WIRES
- PKS PK NAIL SET
- PNS POINT NOT SET
- RRS RAIL ROAD SPIKE
- ⊕ TELEPHONE PEDESTAL
- ⊕ TRANSFORMER
- ⊕ CABLE TV PEDESTAL
- ⊕ UTILITY POLE
- ⊕ WATER METER
- ⊕ WATER VALVE
- ⊕ YARD INLET
- () FIELD MEASUREMENT

167

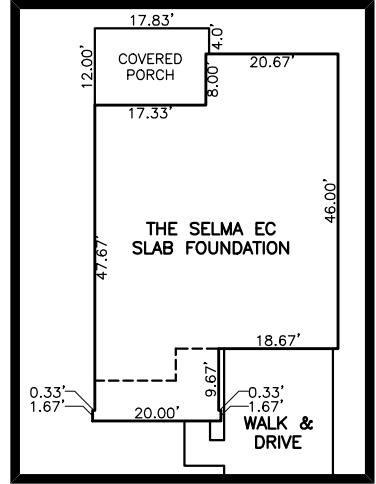
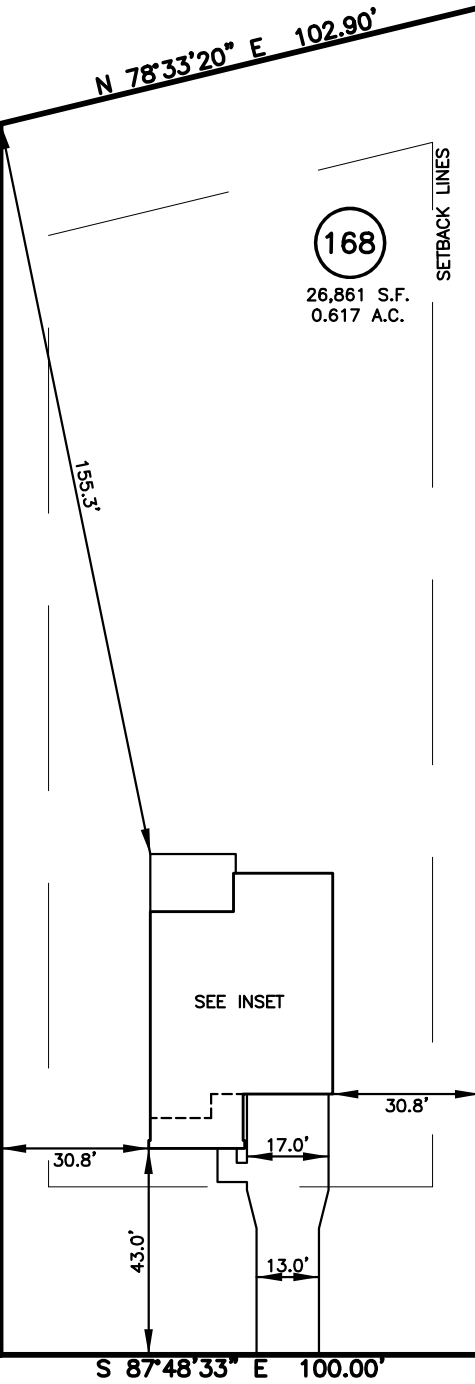
168

26,861 S.F.
0.617 A.C.

SETBACK LINES

S 02°11'27" W 256.48'

S 02°11'27" W 280.74'



INSET SCALE: 1"=30'

169

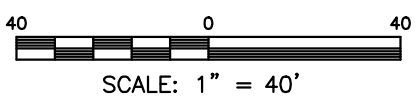
SETBACK INFO

- FRONT: 35'
- REAR: 25'
- SIDES: 10'
- CORNER SIDE: 20'

REFERENCES:

P.B. 2022, PGS. 594-596

IMPERVIOUS SURFACES	S.F.
HOUSE	1,830
WALK & DRIVE	840
PORCH	210
TOTAL	2,880
PERCENT IMPERVIOUS	10.7%



NOTES

1. THIS SURVEY SUBJECT TO ANY FACTS THAT MAY BE DISCLOSED BY A FULL AND ACCURATE TITLE SEARCH.
2. THIS MAP MAY NOT BE A CERTIFIED SURVEY AND HAS NOT BEEN REVIEWED BY A LOCAL GOVERNMENT AGENCY FOR COMPLIANCE WITH ANY APPLICABLE LAND DEVELOPMENT REGULATIONS AND HAS NOT BEEN REVIEWED FOR COMPLIANCE WITH RECORDING REQUIREMENTS FOR PLATS.

PLOT PLAN
 PRELIMINARY PLAT- NOT FOR RECORDATION,
 CONVEYANCE OR SALES

DATE: JAN. 11, 2024

REV CODE: 1.FLIP, 2.PLAN, 3.ROTATE, 4.MOVE, 5.SS
 6.SEVERAL OF ABOVE, 7.LAND FEATURE, 8. OTHER

F.B. _____

RWK, PA
ENGINEERING ~ SURVEYING
 CORPORATE LICENSE: C-1771
 101 W. MAIN ST., SUITE 202
 GARNER, NC 27529
 PHONE (919) 779-4854
 FAX (919) 779-4056