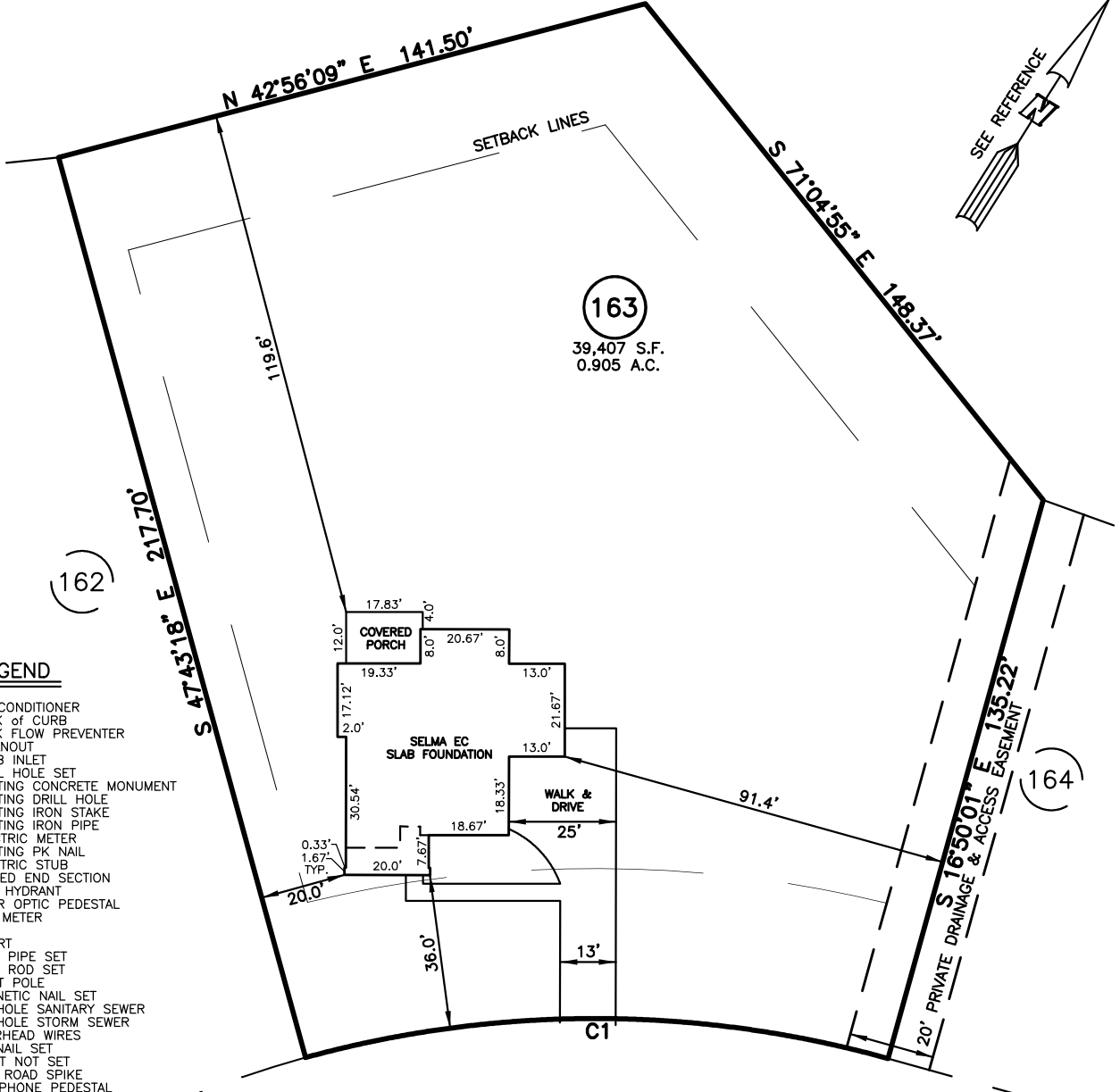


PLOT PLAN FOR
NEW HOME, INC., LLC
 DUNCAN CREEK ROAD
 LOT 163, DUNCAN'S CREEK PHASE 1
 UPPER LITTLE CREEK TOWNSHIP, HARNETT COUNTY, NORTH CAROLINA

OPEN SPACE



LEGEND

- ⊠ AIR CONDITIONER
- BC BACK OF CURB
- BFP BACK FLOW PREVENTER
- CLEANOUT
- ⊞ CURB INLET
- DHS DRILL HOLE SET
- ECM EXISTING CONCRETE MONUMENT
- EDH EXISTING DRILL HOLE
- EIS EXISTING IRON STAKE
- EIP EXISTING IRON PIPE
- EM ELECTRIC METER
- EPK EXISTING PK NAIL
- ES ELECTRIC STUB
- ⊞ FLARED END SECTION
- ⊞ FIRE HYDRANT
- ⊞ FIBER OPTIC PEDESTAL
- ⊞ GAS METER
- ⊞ GUY
- INV. INVERT
- IPS. IRON PIPE SET
- IRS. IRON ROD SET
- ⊞ LIGHT POLE
- MNS MAGNETIC NAIL SET
- ⊞ MANHOLE SANITARY SEWER
- ⊞ MANHOLE STORM SEWER
- OHV. OVERHEAD WIRES
- PKS. PK NAIL SET
- PNS. POINT NOT SET
- RRS. RAIL ROAD SPIKE
- ⊞ TELEPHONE PEDESTAL
- ⊞ TRANSFORMER
- ⊞ CABLE TV PEDESTAL
- ⊞ UTILITY POLE
- ⊞ WATER METER
- ⊞ WATER VALVE
- ⊞ YARD INLET
- () FIELD MEASUREMENT

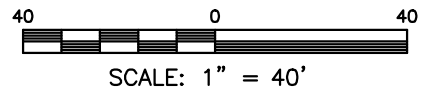
DUNCAN CREEK ROAD
 50' PUBLIC R/W

SETBACK INFO

- FRONT: _____ 35'
- REAR: _____ 25'
- SIDES: _____ 10'
- CORNER SIDE: _____ 20'

NUM	RADIUS	ARC	DELTA	CHORD BRG	CHORD
C1	255.00'	137.47'	30°53'17"	N 57°43'21" E	135.81'

IMPERVIOUS SURFACES	
HOUSE	2,190 S.F.
WALK & DRIVE	1,300 S.F.
PORCH	210 S.F.
TOTAL	3,700 S.F.



REFERENCES:
 P.B. 2022, PGS 594-596

NOTES

1. THIS SURVEY SUBJECT TO ANY FACTS THAT MAY BE DISCLOSED BY A FULL AND ACCURATE TITLE SEARCH.
2. THIS MAP MAY NOT BE A CERTIFIED SURVEY AND HAS NOT BEEN REVIEWED BY A LOCAL GOVERNMENT AGENCY FOR COMPLIANCE WITH ANY APPLICABLE LAND DEVELOPMENT REGULATIONS AND HAS NOT BEEN REVIEWED FOR COMPLIANCE WITH RECORDING REQUIREMENTS FOR PLATS.

PLOT PLAN
 PRELIMINARY PLAT- NOT FOR RECORDATION,
 CONVEYANCE OR SALES

DATE: DEC. 15, 2023

REV CODE: 1.FLIP, 2.PLAN, 3.ROTATE, 4.MOVE, 5.SS
 6.SEVERAL OF ABOVE, 7.LAND FEATURE, 8. OTHER

F.B. _____

RWK, PA
ENGINEERING ~ SURVEYING
 CORPORATE LICENSE: C-1771
 101 W. MAIN ST., SUITE 202
 GARNER, NC 27529
 PHONE (919) 779-4854
 FAX (919) 779-4056