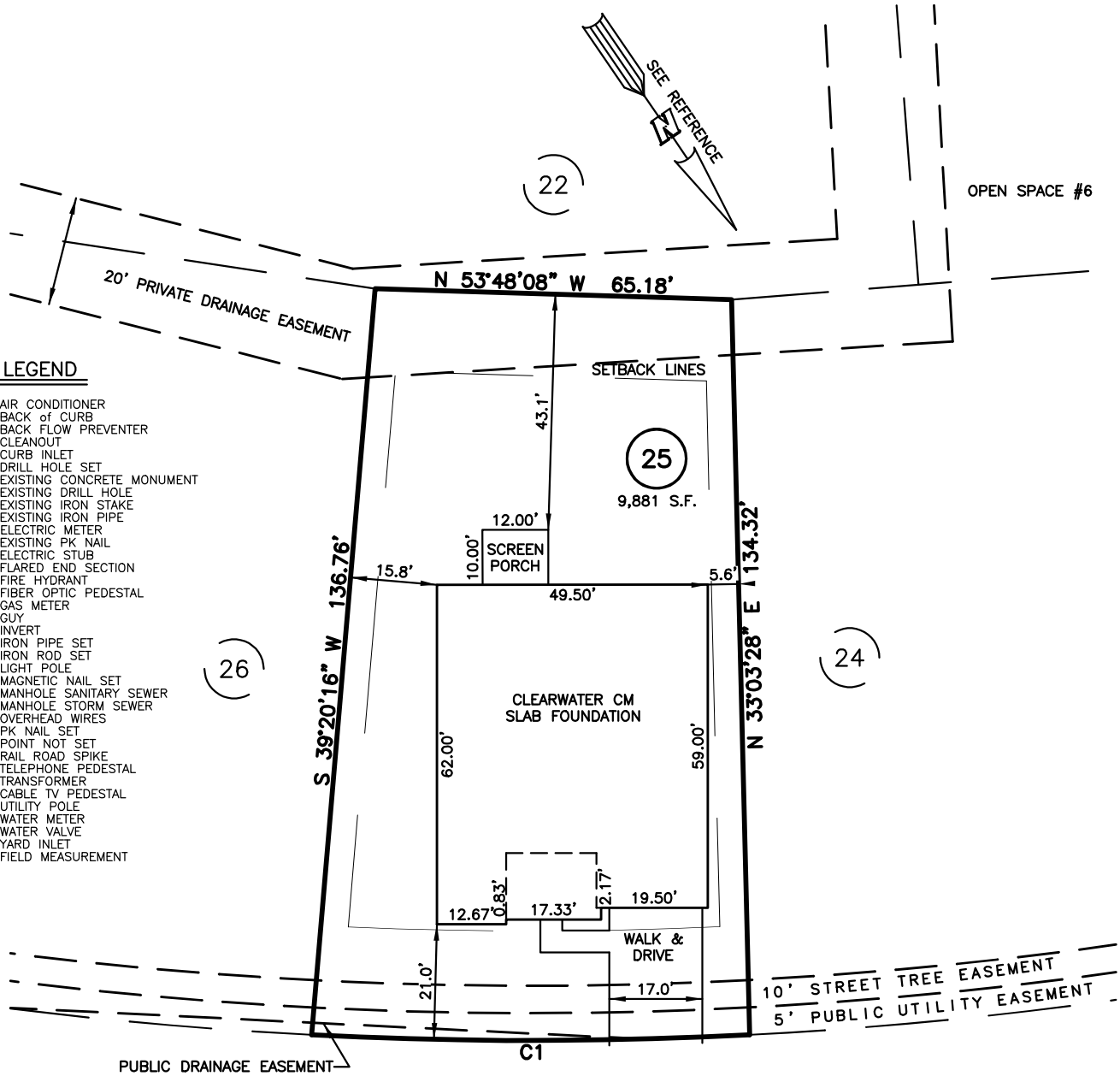


PLOT PLAN FOR  
**MATTAMY HOMES**  
 254 WINDSWEPT WAY  
 LOT 25, PROVIDENCE CREEK PHASE 1  
 HECTORS CREEK AND BLACK RIVER TOWNSHIP, HARNETT COUNTY, NORTH CAROLINA



**LEGEND**

- ▲ AIR CONDITIONER
- BC BACK OF CURB
- BFP BACK FLOW PREVENTER
- CLEANOUT
- CURB INLET
- DHS DRILL HOLE SET
- ECM EXISTING CONCRETE MONUMENT
- EDH EXISTING DRILL HOLE
- EIS EXISTING IRON STAKE
- EIP EXISTING IRON PIPE
- EM ELECTRIC METER
- EPK EXISTING PK NAIL
- ES ELECTRIC STUB
- FLR FLARED END SECTION
- FHY FIRE HYDRANT
- FOP FIBER OPTIC PEDESTAL
- GM GAS METER
- GUY GUY
- INV INVERT
- IPS IRON PIPE SET
- IRS IRON ROD SET
- LIGHT POLE
- MNS MAGNETIC NAIL SET
- MS MANHOLE SANITARY SEWER
- MS MANHOLE STORM SEWER
- OHV OVERHEAD WIRES
- PKS PK NAIL SET
- PNS POINT NOT SET
- RRS RAIL ROAD SPIKE
- TELEPHONE PEDESTAL
- TRANSFORMER
- CABLE TV PEDESTAL
- UTILITY POLE
- WATER METER
- WATER VALVE
- YARD INLET
- ( ) FIELD MEASUREMENT

| NUM | RADIUS  | ARC    | DELTA    | CHORD BRG     | CHORD  |
|-----|---------|--------|----------|---------------|--------|
| C1  | 775.00' | 80.10' | 5°55'19" | N 55°32'41" W | 80.07' |

| IMPERVIOUS SURFACES |                   |
|---------------------|-------------------|
| HOUSE               | 3,000 S.F.        |
| WALK & DRIVE        | 470 S.F.          |
| SCREEN PORCH        | 120 S.F.          |
| <b>TOTAL</b>        | <b>3,590 S.F.</b> |

**SETBACK INFO**

|              |     |
|--------------|-----|
| FRONT:       | 20' |
| REAR:        | 15' |
| SIDES:       | 5'  |
| CORNER SIDE: | 15' |

**REFERENCES:**  
 BM 2022 PGS 346-351

**SCALE: 1" = 30'**

- NOTES**
- THIS SURVEY SUBJECT TO ANY FACTS THAT MAY BE DISCLOSED BY A FULL AND ACCURATE TITLE SEARCH.
  - THIS MAP MAY NOT BE A CERTIFIED SURVEY AND HAS NOT BEEN REVIEWED BY A LOCAL GOVERNMENT AGENCY FOR COMPLIANCE WITH ANY APPLICABLE LAND DEVELOPMENT REGULATIONS AND HAS NOT BEEN REVIEWED FOR COMPLIANCE WITH RECORDING REQUIREMENTS FOR PLATS.

PLOT PLAN  
 PRELIMINARY PLAT- NOT FOR RECORDATION,  
 CONVEYANCE OR SALES

REV CODE: 1.FLIP, 2.PLAN, 3.ROTATE, 4.MOVE, 5.SS  
 6.SEVERAL OF ABOVE, 7.LAND FEATURE, 8. OTHER

REV1: DEC. 06, 2023(4)  
 DATE: NOV. 30, 2023

F.B. \_\_\_\_\_

**RWK, PA**  
**ENGINEERING ~ SURVEYING**  
 CORPORATE LICENSE: C-1771  
 101 W. MAIN ST., SUITE 202  
 GARNER, NC 27529  
 PHONE (919) 779-4854  
 FAX (919) 779-4056