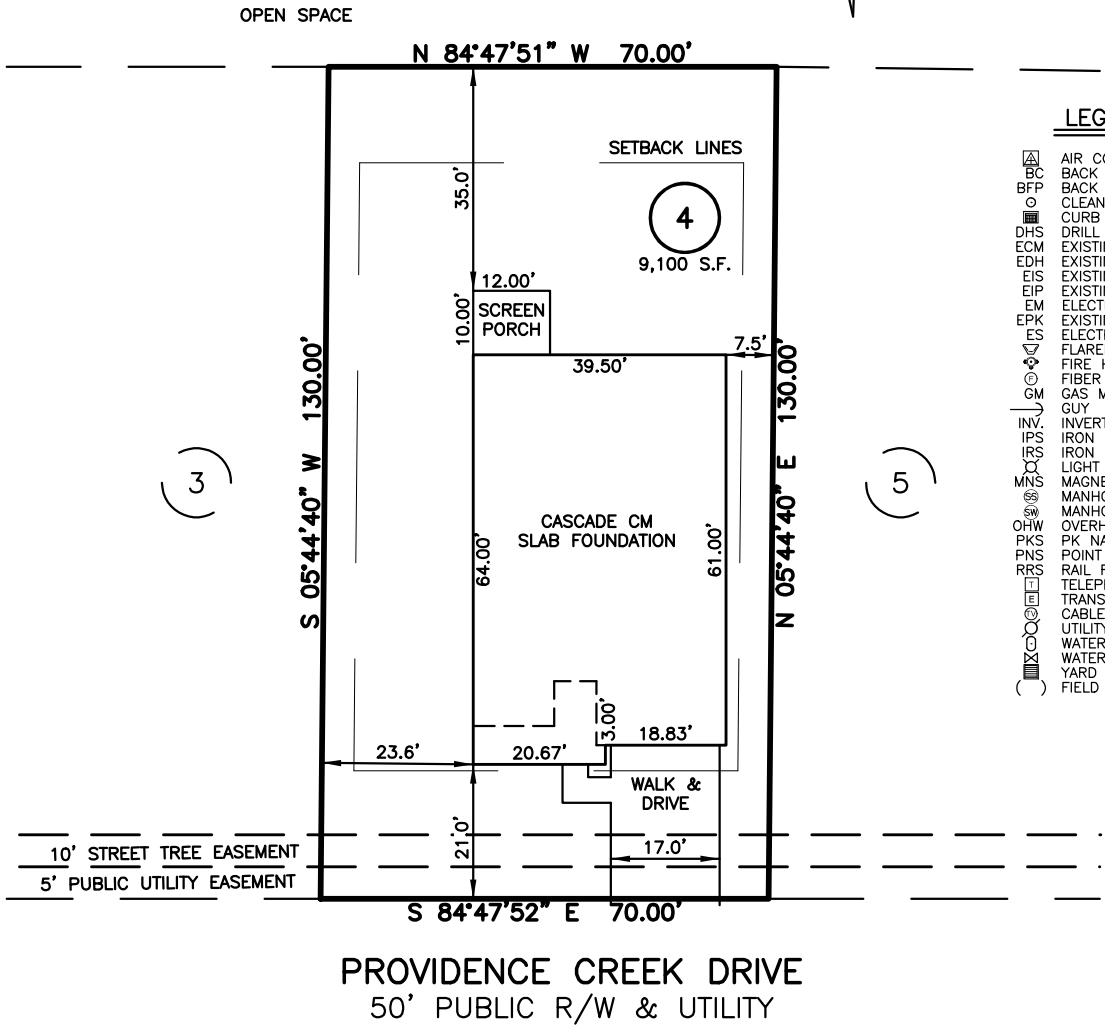


PLOT PLAN FOR  
**MATTAMY HOMES**  
 121 PROVIDENCE CREEK DRIVE  
 LOT 4, PROVIDENCE CREEK PHASE 1  
 HECTORS CREEK AND BLACK RIVER TOWNSHIP, HARNETT COUNTY, NORTH CAROLINA

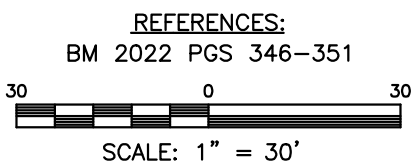


- LEGEND**
- △ AIR CONDITIONER
  - BC BACK of CURB
  - BFP BACK FLOW PREVENTER
  - CLEANOUT
  - CURB INLET
  - DHS DRILL HOLE SET
  - ECM EXISTING CONCRETE MONUMENT
  - EDH EXISTING DRILL HOLE
  - EIS EXISTING IRON STAKE
  - EIP EXISTING IRON PIPE
  - EM ELECTRIC METER
  - EPK EXISTING PK NAIL
  - ES ELECTRIC STUB
  - ▽ FLARED END SECTION
  - ⊕ FIRE HYDRANT
  - ⊙ FIBER OPTIC PEDESTAL
  - GM GAS METER
  - GUY
  - INV. INVERT
  - IPS IRON PIPE SET
  - IRS IRON ROD SET
  - LIGHT POLE
  - MNS MAGNETIC NAIL SET
  - ⊙ MANHOLE SANITARY SEWER
  - ⊙ MANHOLE STORM SEWER
  - OHV OVERHEAD WIRES
  - PKS PK NAIL SET
  - PNS POINT NOT SET
  - RRS RAIL ROAD SPIKE
  - ⊙ TELEPHONE PEDESTAL
  - ⊙ TRANSFORMER
  - ⊙ CABLE TV PEDESTAL
  - ⊙ UTILITY POLE
  - ⊙ WATER METER
  - ⊙ WATER VALVE
  - ⊙ YARD INLET
  - ( ) FIELD MEASUREMENT

**SETBACK INFO**

FRONT:	20'
REAR:	15'
SIDES:	5'
CORNER SIDE:	15'

IMPERVIOUS SURFACES	S.F.
HOUSE	2,470
WALK & DRIVE	450
SCREEN PORCH	120
<b>TOTAL</b>	<b>3,040</b>



- NOTES**
1. THIS SURVEY SUBJECT TO ANY FACTS THAT MAY BE DISCLOSED BY A FULL AND ACCURATE TITLE SEARCH.
  2. THIS MAP MAY NOT BE A CERTIFIED SURVEY AND HAS NOT BEEN REVIEWED BY A LOCAL GOVERNMENT AGENCY FOR COMPLIANCE WITH ANY APPLICABLE LAND DEVELOPMENT REGULATIONS AND HAS NOT BEEN REVIEWED FOR COMPLIANCE WITH RECORDING REQUIREMENTS FOR PLATS.

PLOT PLAN  
 PRELIMINARY PLAT- NOT FOR RECORDATION,  
 CONVEYANCE OR SALES

DATE: NOV. 30, 2023

F.B. \_\_\_\_\_

**RWK, PA**  
**ENGINEERING ~ SURVEYING**  
 CORPORATE LICENSE: C-1771  
 101 W. MAIN ST., SUITE 202  
 GARNER, NC 27529  
 PHONE (919) 779-4854  
 FAX (919) 779-4056

REV CODE: 1.FLIP, 2.PLAN, 3.ROTATE, 4.MOVE, 5.SS  
 6.SEVERAL OF ABOVE, 7.LAND FEATURE, 8. OTHER