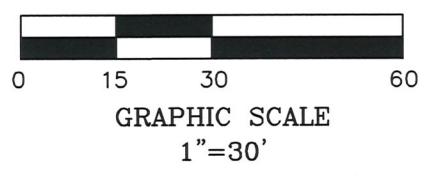


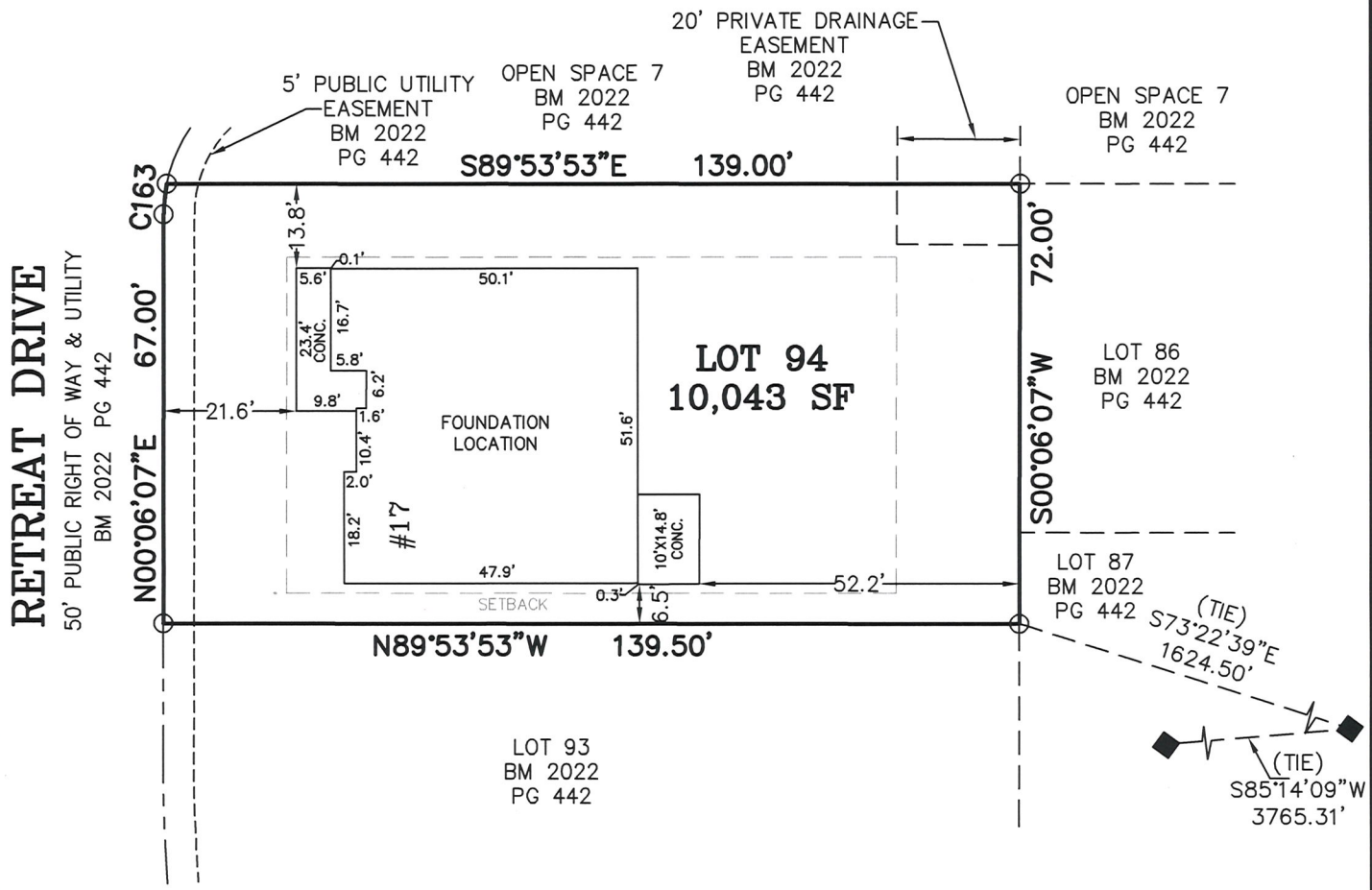
VICINITY MAP (NTS)



LEGEND

○	MATHEMATICAL POINT
■	SUBDIVISION CONTROL CORNER

SEE NOTES



NOTES:
 -REFERENCE HARNETT CO. BM 2022, PG 434-448 FOR BOUNDARY INFORMATION, NORTH INDEX & TIE LINES TO SUBDIVISION CONTROL CORNERS.
 -ZONED: RA-30, RA-40, & CONSERVATION.
 -SETBACKS PER BM 2022 PG 434:
 >43' LOT WIDTH:
 FRONT YARD-20', SIDE YARD-5', REAR YARD-20', CORNER YARD-12'.
 -PROPERTY IS NOT LOCATED WITHIN A SPECIAL FLOOD HAZARD AREA AS SCALED FROM THE NFIP FIRM No. 3720065500L (EFFECTIVE DATE: JULY 19, 2022).

CURVE TABLE				
CURVE	LENGTH	RADIUS	CHORD BEARING	CHORD
C163	5.03'	25.00'	N05°52'13"E	5.03'

**FOUNDATION LOCATION
LOT 94**

SERENITY SUBDIVISION, PHASE 1
HECTOR'S CREEK TOWNSHIP, HARNETT COUNTY, NC

SURVEYED FOR
DAVID WEEKLEY HOMES
1901 N. HARRISON AVENUE, SUITE 200
CARY, NC 27513

MSS LAND CONSULTANTS, PC
 "Committed to Total Quality Service"
 Firm License: C-2070
 E S T. 1 9 9 8

6118 St. Giles St Phone (919) 510-4464
 (Suite E) Fax (919) 510-9102
 Raleigh, NC 27612 Email: gowersw@mssland.com

I HEREBY CERTIFY THAT THIS FOUNDATION IS CORRECT AS SHOWN AND THAT THERE ARE NO ENCROACHMENTS UNLESS OTHERWISE SHOWN. THIS IS NOT A SURVEY. THIS PLAT DOES NOT CONFORM TO GS-47-30 AS AMENDED AND IS NOT FOR RECORDATION. THE DIMENSIONS SHOWN HEREON FROM THE PROPERTY LINES TO THE FOUNDATION ARE NOT INTENDED TO MONUMENT THE PROPERTY LINES OR TO GUIDE IN THE ERECTION OF FENCES OR ANY OTHER IMPROVEMENT. THIS SURVEY WAS PREPARED FOR THE PARTIES AND PURPOSE INDICATED HEREON. ANY EXTENSION OF THE USE BEYOND THE PURPOSE AGREED TO BETWEEN THE CLIENT AND SURVEYOR EXCEEDS THE SCOPE OF ENGAGEMENT.



Matthew A. Hayes
 MATTHEW A. HAYES, PLS L-4516
 01/12/2024

O:_DWHOMES\DWH-22-02\dwg\FND LOC\94.dwg, Layout1, 1/11/2024 11:53:55 AM, smittib, 1:1